



FOR LEASE | OFFICE

NEW TO THE MARKET - OFFICE SPACE IN CHISWICK PARK, SUDBURY

490 Boston Post Road, Sudbury, MA 01776



LEASE OVERVIEW

AVAILABLE SF:	3,635 - 8,614 SF
LEASE RATE:	\$16.50 SF/Yr (MG)
LOT SIZE:	27 Acres
BUILDING SIZE:	73,082 SF
BUILDING CLASS:	B
YEAR BUILT:	1987

PROPERTY DESCRIPTION

- Located just off Rt. 20 in Sudbury
- Mixture of open space and private offices
- Private outdoor area with picnic tables
- Direct pathway to new 40,000sf retail development with Whole Foods as one of the anchor tenants
- Kitchenette and private bathrooms with showers



JAKE PARSONS
 Senior Advisor
 508.271.9223
 jake.parsons@svn.com

MARCI ALVARADO
 Senior Advisor
 508.271.9219
 marci.alvarado@svn.com

All SVN® Offices Independently Owned & Operated.
 The information listed above has been obtained from sources we believe to be reliable, however, we accept no responsibility for its correctness.



FOR LEASE | OFFICE

NEW TO THE MARKET - OFFICE SPACE IN CHISWICK PARK, SUDBURY

490 Boston Post Road, Sudbury, MA 01776



JAKE PARSONS
Senior Advisor
508.271.9223
jake.parsons@svn.com

MARCI ALVARADO
Senior Advisor
508.271.9219
marci.alvarado@svn.com

All SVN® Offices Independently Owned & Operated.
The information listed above has been obtained from sources we believe to be reliable, however, we accept no responsibility for its correctness.

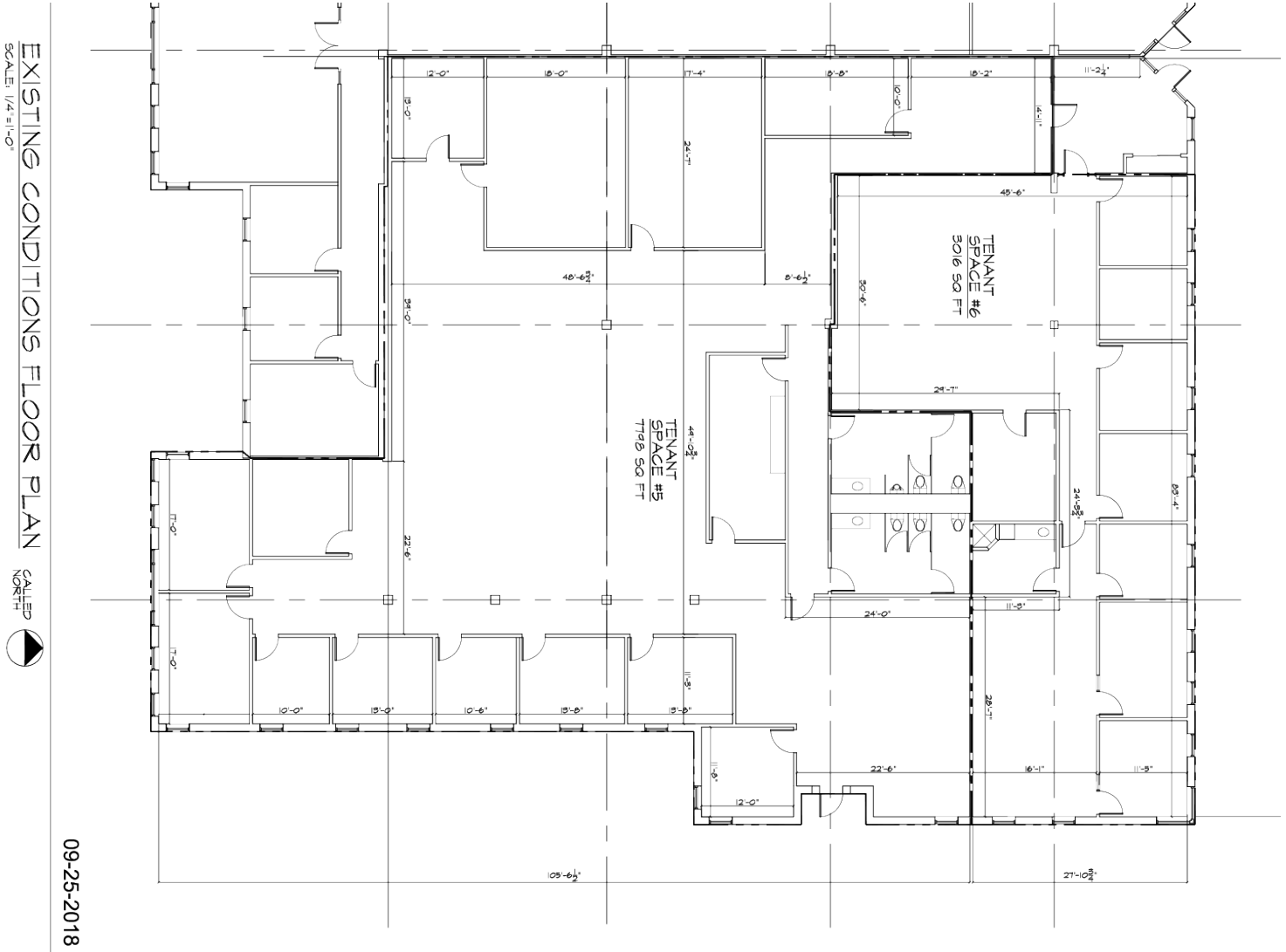
svnpcgboston.com



FOR LEASE | OFFICE

NEW TO THE MARKET - OFFICE SPACE IN CHISWICK PARK, SUDBURY

490 Boston Post Road, Sudbury, MA 01776



ISSUE DATE:	24 August 2018
FLOOR PLAN	SUITE 5
	SUITE 6

200 WINTER STREET
SUITE 200
SUDBURY, MA 01776
TEL: 508.271.9223
WWW.JGARCHITECTURE.COM

EXISTING CONDITIONS
PARIS TRUST LLC
CHISWICK PLACE
490 BOSTON POST ROAD
SUDBURY, MASSACHUSETTS 01776

DATE: 09/25/2018 DRAWN BY: JG CHECKED BY: JG PROJECT: CHISWICK PLACE SHEET: 5 OF 6
--



JAKE PARSONS
Senior Advisor
508.271.9223
jake.parsons@svn.com

MARCI ALVARADO
Senior Advisor
508.271.9219
marci.alvarado@svn.com

All SVN® Offices Independently Owned & Operated.
The information listed above has been obtained from sources we believe to be reliable, however, we accept no responsibility for its correctness.



FOR LEASE | OFFICE

NEW TO THE MARKET - OFFICE SPACE IN CHISWICK PARK, SUDBURY

490 Boston Post Road, Sudbury, MA 01776



JAKE PARSONS
 Senior Advisor
 508.271.9223
 jake.parsons@svn.com

MARCI ALVARADO
 Senior Advisor
 508.271.9219
 marci.alvarado@svn.com

All SVN® Offices Independently Owned & Operated.
 The information listed above has been obtained from sources we believe to be reliable, however, we accept no responsibility for its correctness.