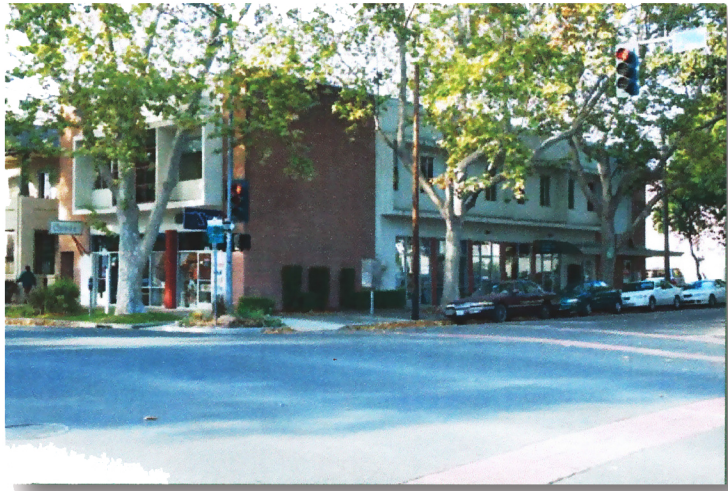




FOR LEASE

2231 J STREET



- Property Highlights*
- Great mid-town location
 - 888, 1000 +/- , 1,888 square feet - full service 2nd floor location
 - Large open space suite, with two private offices (*can be divided*)
 - Three parking spaces on site
 - Near restaurants and shopping
 - Rent very competitive @ \$1.25 - \$1.50 FS

Contact Exclusive Agent
Commercial Real Estate Specialist
Reed Marquardt
725 30th Street, Suite 200
Tel: (916) 492-1200
Email: reedmarquardt@aol.com
DRE #00455519

