

## Tukwila Commerce Park

12622B Interurban Ave S  
Building B  
Seattle, WA

6,270 SF total

2,490 SF office

12' clear height

2 drive-in doors

Available November 1, 2011

Excellent access to I-5  
and SR-599

Lease rate:  
\$5,316 per month, NNN

\$0.55 shell

\$0.75 office add-on



### Location



### Contact

**Matt Wood, SIOR**

206.248.7306

mwood@kiddermathews.com

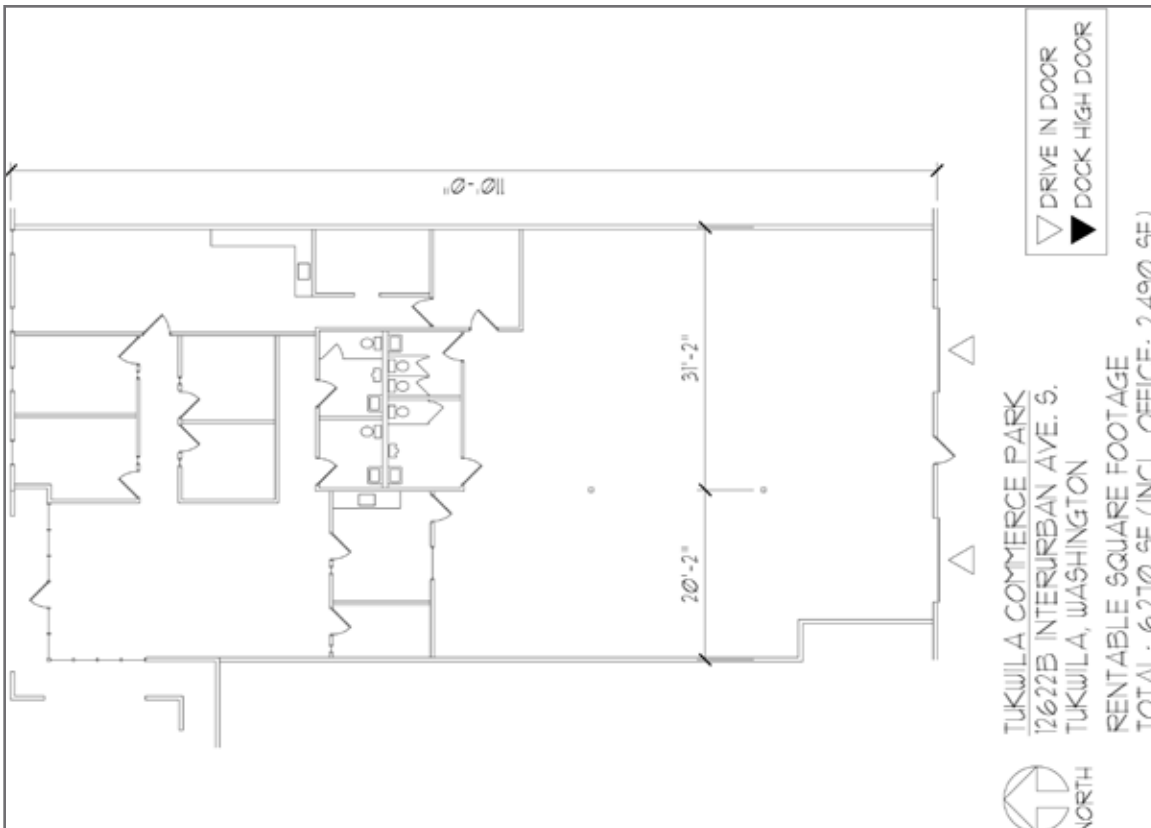
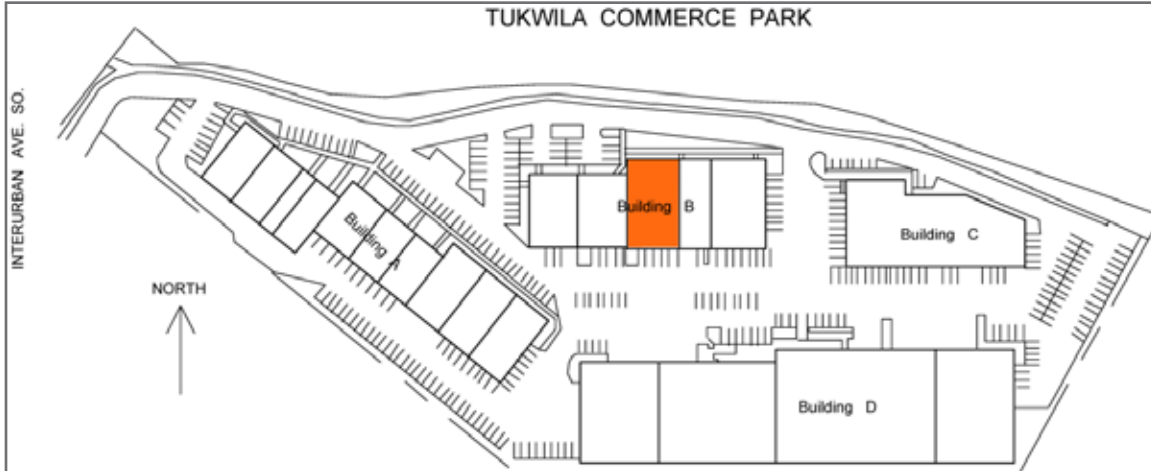
**Jim Kidder, SIOR**

206.248.7328

jkidder@kiddermathews.com



## Tukwila Commerce Park, Building B



### Contact

**Matt Wood**  
206.248.7306  
mwood@kiddermathews.com

**Jim Kidder, SIOR**  
206.248.7328  
jkidder@kiddermathews.com

