

FOR LEASE

5038 Ruffner Street, San Diego, CA 92111

Suite B | 3,122 Square Feet Available

Voit

REAL ESTATE SERVICES



PROPERTY FEATURES

- ± 3,122 Square Feet Available
- 25% Office Build-Out with 1 Private Office and Showroom
- Grade Level Loading
- 13'-15' Clear Height
- Frontage on Ruffner Street
- Right Off Clairemont Mesa Blvd.
- Walking Distance to Retail Amenities
- Gas Service Available
- Cox Fiber to the Building
- Drive Around Truck Access
- Minutes to I-805, Hwy-52 & Hwy 163
- **Lease Rate \$1.20 Gross**

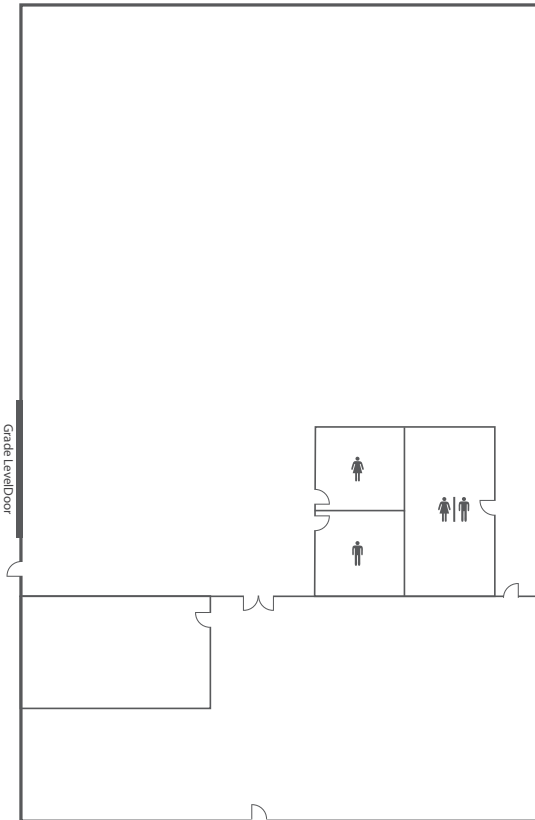


FOR LEASE

5038 Ruffner Street, San Diego, CA 92111

Suite B | 3,122 Square Feet Available

Floor Plan



Chris Duncan
Senior Associate
Lic #01324067
858.458.3307
cduncan@voitco.com

Voit
REAL ESTATE SERVICES

4747 Executive Drive, Suite 800, San Diego, CA 92121 • 858.453.0505 • 858.408.3976 Fax • Lic #01333376 | www.voitco.com

The information contained herein has been obtained from sources we deem reliable. While we have no reason to doubt its accuracy, we do not guarantee it. ©2014 Voit Real Estate Services, Inc. All Rights Reserved. Real People. Real Solutions.® is a registered trademark of Voit Real Estate Services.

CORFAC
International