

cranford, nj

310 centennial avenue

new construction opened in 2020 | for lease



DEMOGRAPHICS	1 MILE	3 MILE	5 MILES
Population	17,233	167,647	441,921
Median HHI	\$106,973	\$97,725	\$92,829
Daytime Population	9,863	76,654	180,559

Address	310 Centennial Avenue, Cranford, NJ 07016
Available	2,000 square feet
Asking Rent	Upon request
Area Retail	Homewood Suites by Hilton, Starbucks, CubeSmart Self Storage, Whole Foods, CVS, Enterprise, Walgreens, The Home Depot, ShopRite, Target, banks, restaurants, and many more
Comments	<ul style="list-style-type: none">• building with 20 residential luxury apartments• located in downtown Centennial Village at corner of Centennial Avenue and North Lehigh Avenue• 1 mile from the Garden State Parkway• ample street parking and covered parking garage

For More Information:

Robert Ruzza | ruzza@sabre.life | T 201 249 8911 x 1533

Justin Korinis | korinis@sabre.life | T 201 249 8911 x 1545

sabre.life

SABRE

cranford, nj

310 centennial avenue

PHOTOS



For More Information:

Robert Ruzza | ruzza@sabre.life | T 201 249 8911 x 1533

Justin Korinis | korinis@sabre.life | T 201 249 8911 x 1545

sabre.life

SABRE

cranford, nj

310 centennial avenue

PHOTOS



For More Information:

Robert Ruzza | ruzza@sabre.life | T 201 249 8911 x 1533

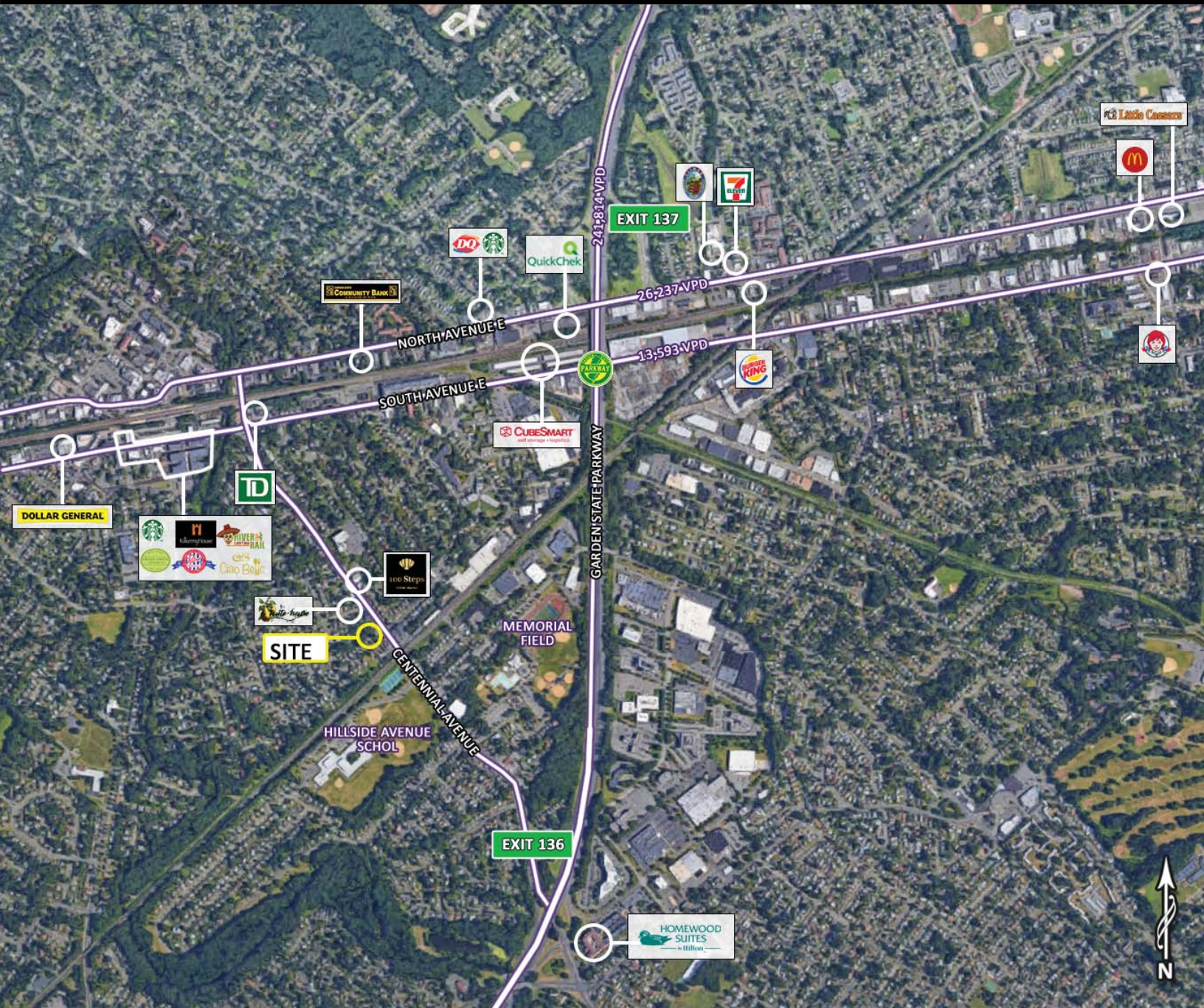
Justin Korinis | korinis@sabre.life | T 201 249 8911 x 1545

sabre.life

SABRE

cranford, nj

310 centennial avenue



For More Information:

Robert Ruzza | ruzza@sabre.life | T 201 249 8911 x 1533

Justin Korinis | korinis@sabre.life | T 201 249 8911 x 1545

Sabre Real Estate Group, LLC

500 Old Country Road Garden City NY 11530

500 Route 17 South Hasbrouck Heights NJ 07604

135 Madison Ave 8th Floor New York NY 10016

sabre.life

© Sabre Real Estate Group, LLC. This information has been obtained from sources believed reliable. We have not verified it and make no guarantee, warranty or representation about it. Any projections, opinions, assumptions or estimates used are for example only and do not represent the current or future performance of the property. You and your advisors should conduct a careful, independent investigation of the property to determine to your satisfaction the suitability of the property for your needs.

SABRE