

Development Opportunity - Covington Hwy

Memorial Drive

Covington Hwy



FOR SALE
3770 COVINGTON HWY
11 ACRES—DEKALB COUNTY



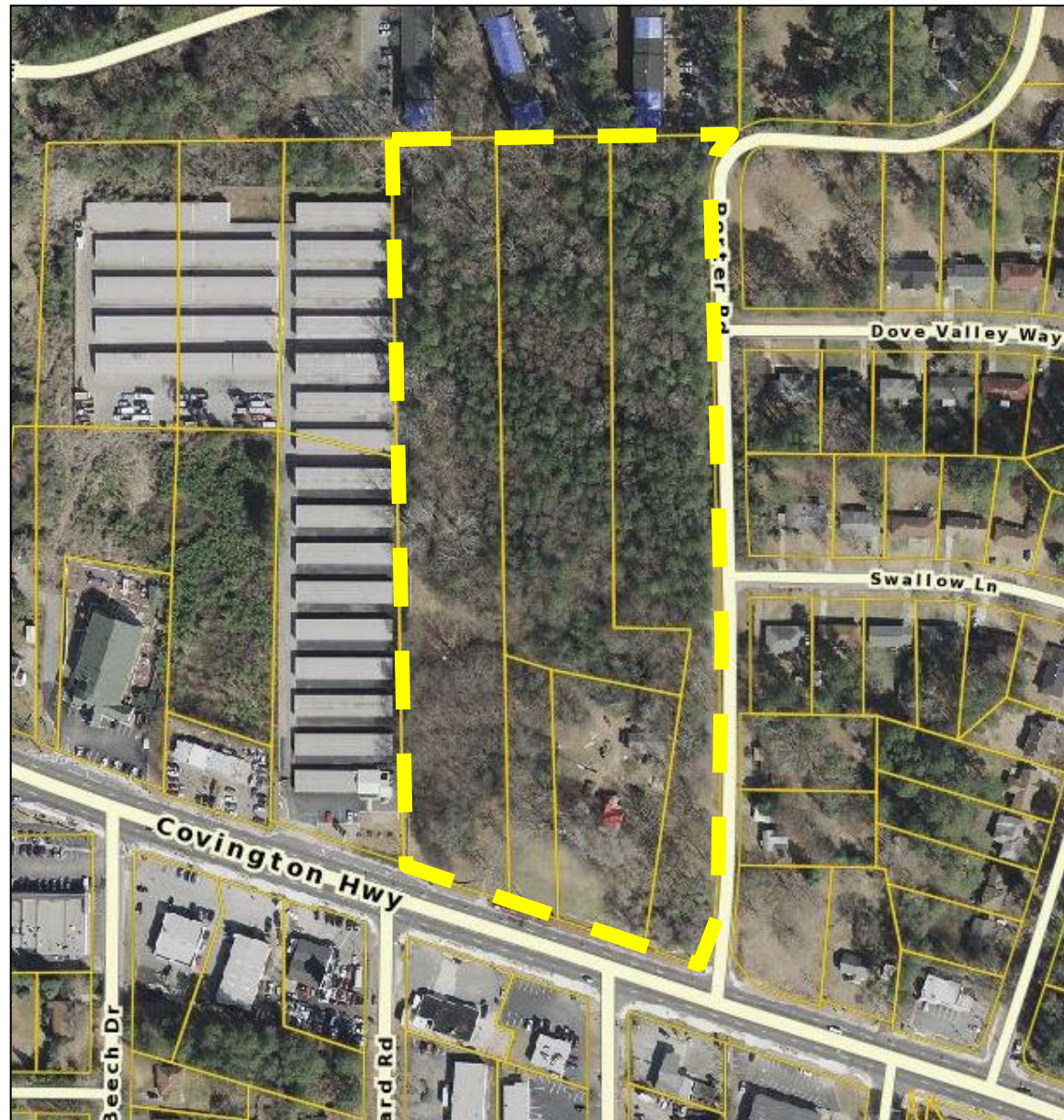
Jim Hobbs | 404-219-6736
jhobbs@atlantalandgroup.com

KW Commercial Peachtree Road
804 Town Blvd. Ste A2040
Atlanta, GA 30319
404-419-3500



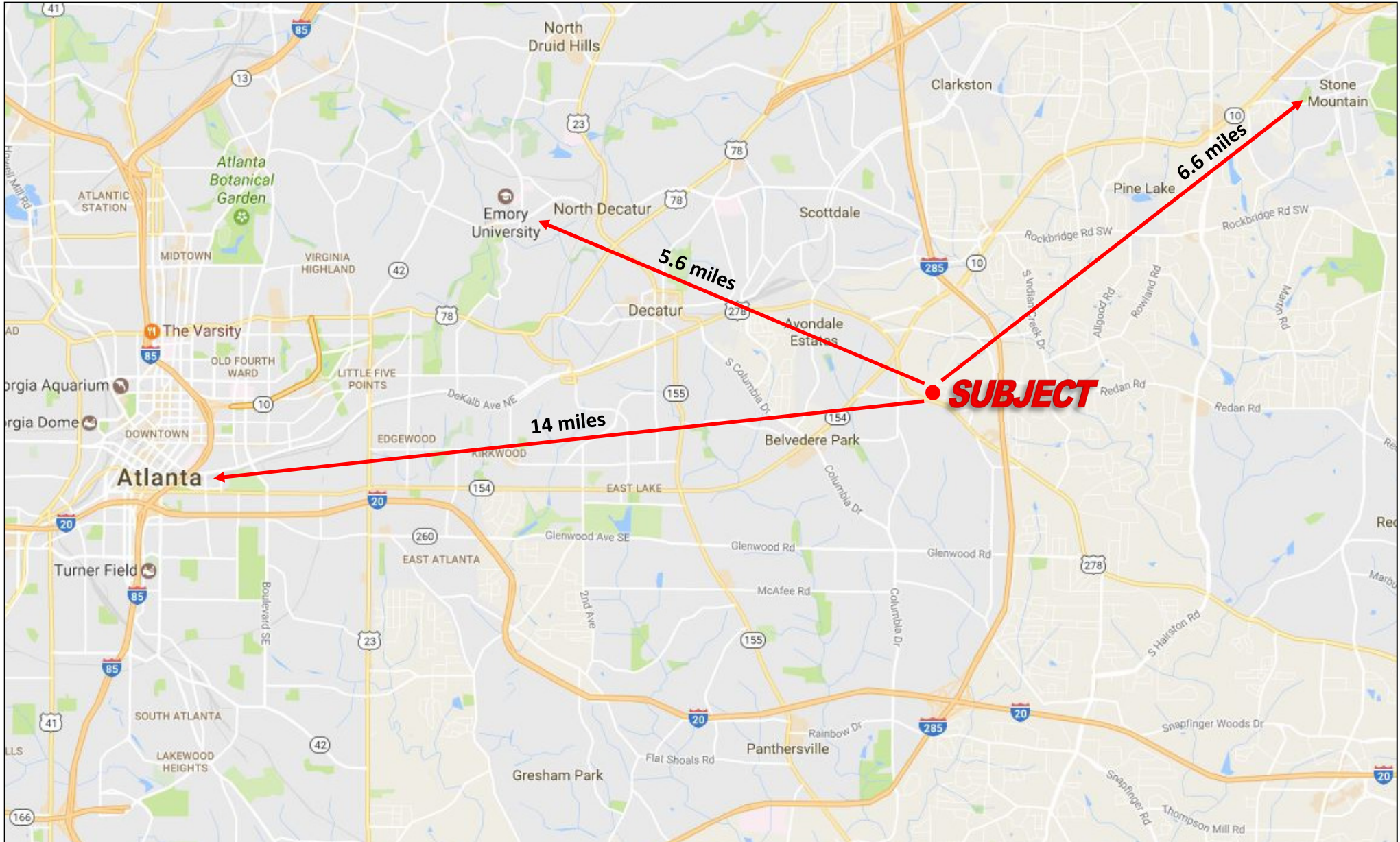
PROPERTY OVERVIEW

- +/- 11 acres—5 parcel assemblage
- Zoned R75 (Single Family Residential)
- Rolling hills
- All utilities available to site, including sewer
- 463 ft of frontage on Covington Highway
- 1,192 ft of depth on Porter Road
- 23,600 ADT (15) on Covington Highway
- Assigned Schools: Mary Mcleod Bethune Middle School—Towers High School
- **Asking \$190,000 per Acre**



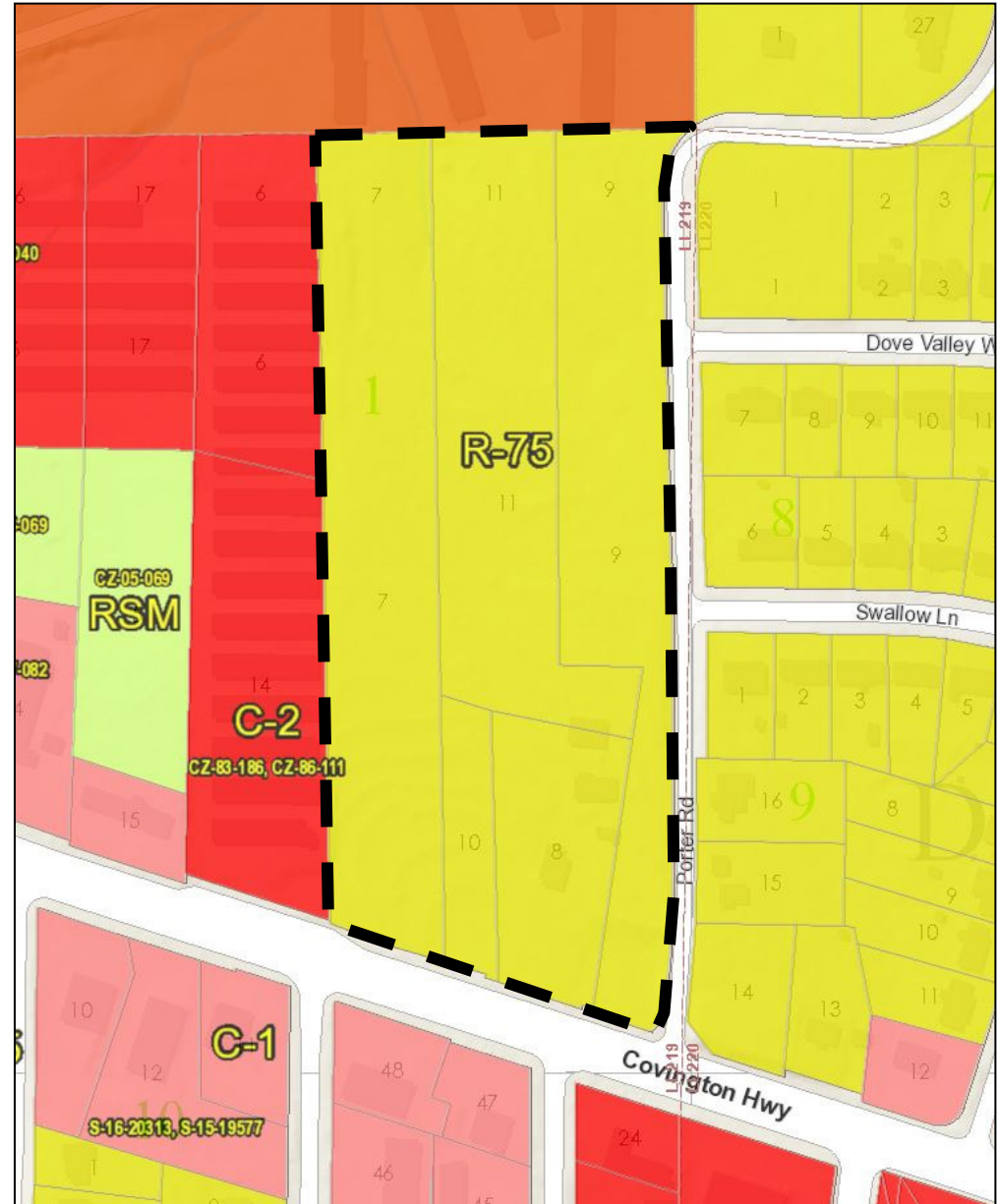


LOCATION MAP



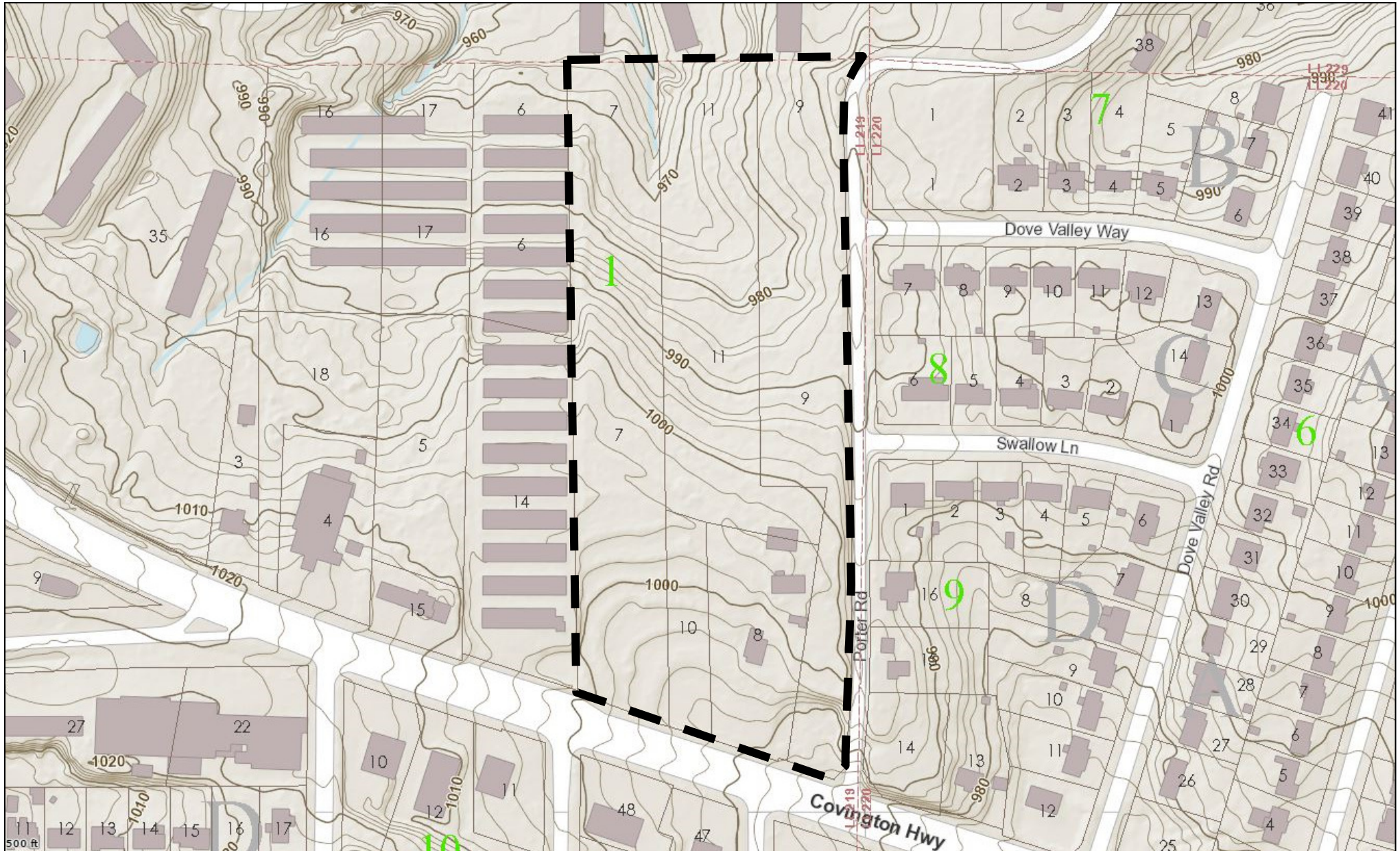


TAX PLAT AND ZONING





TOPOGRAPHY



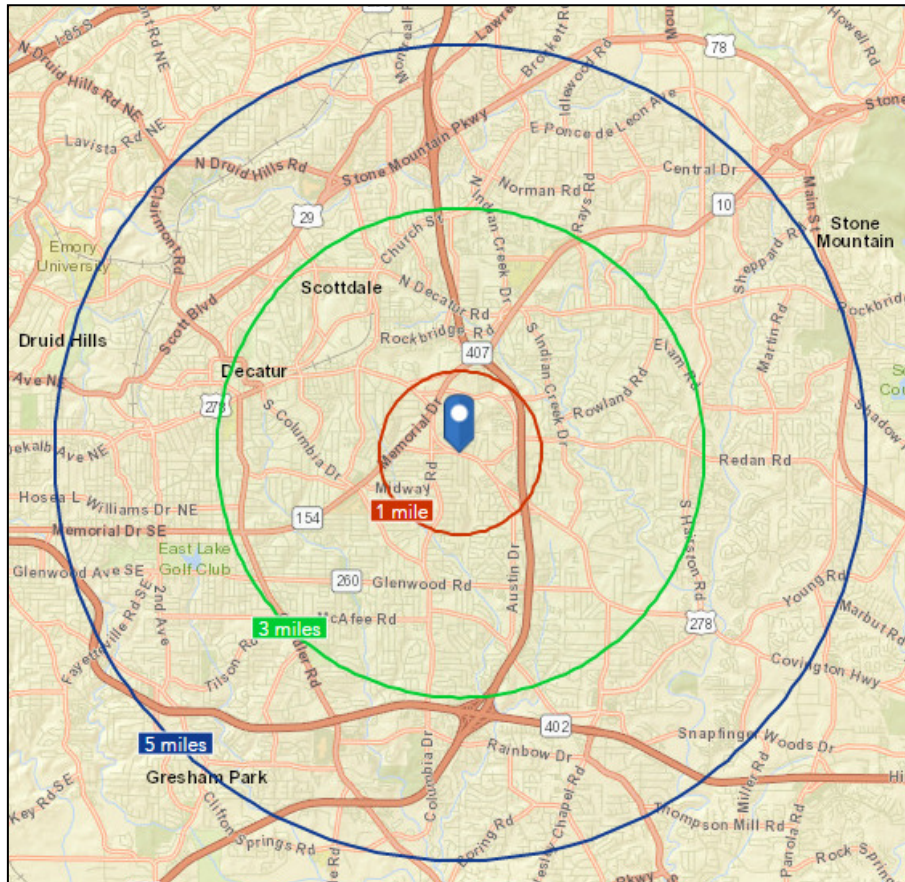
SUBMARKET AERIAL



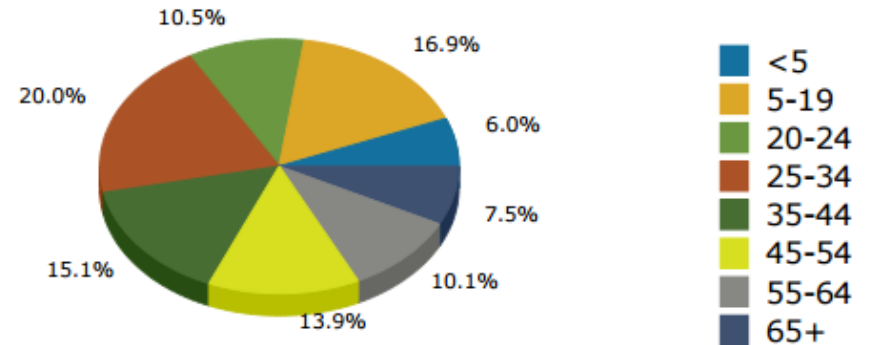


AREA DEMOGRAPHICS

| | Population | # of Households | Avg Household Income | Median Age |
|----------------|------------|-----------------|----------------------|------------|
| 1 Mile | 12,988 | 4,248 | \$45,503 | 33 |
| 3 Miles | 95,846 | 35,974 | \$59,697 | 36 |
| 5 Miles | 270,612 | 104,200 | \$65,110 | 35 |



2016 Population by Age



2016 Home Value

