

1750 BROWN ROAD
AUBURN HILLS, MICHIGAN

INVESTMENT SALE – INDUSTRIAL
53,894 Square Feet



**SIGNATURE
ASSOCIATES**
KNOW SIGNATURE | KNOW RESULTS



PROPERTY FEATURES

- 53,894 square foot building
- 21' clear height
- (18) 18x15 grade level doors
- Zoned I-2, General Industrial
- 1,000 parking spaces
- Building is fully leased to Roush until 1/21/2023 with renewal options. They have been in the building since 2010 servicing FCA
- Excellent property for those that need extra parking
- Price includes 12.376 excess land to the west - can be split off
- Sale Price: \$8,100,000 (\$150.30/sq.ft.)



For more information, please contact:

PAUL HOGE
(248) 948 0103
paulhoge@signatureassociates.com

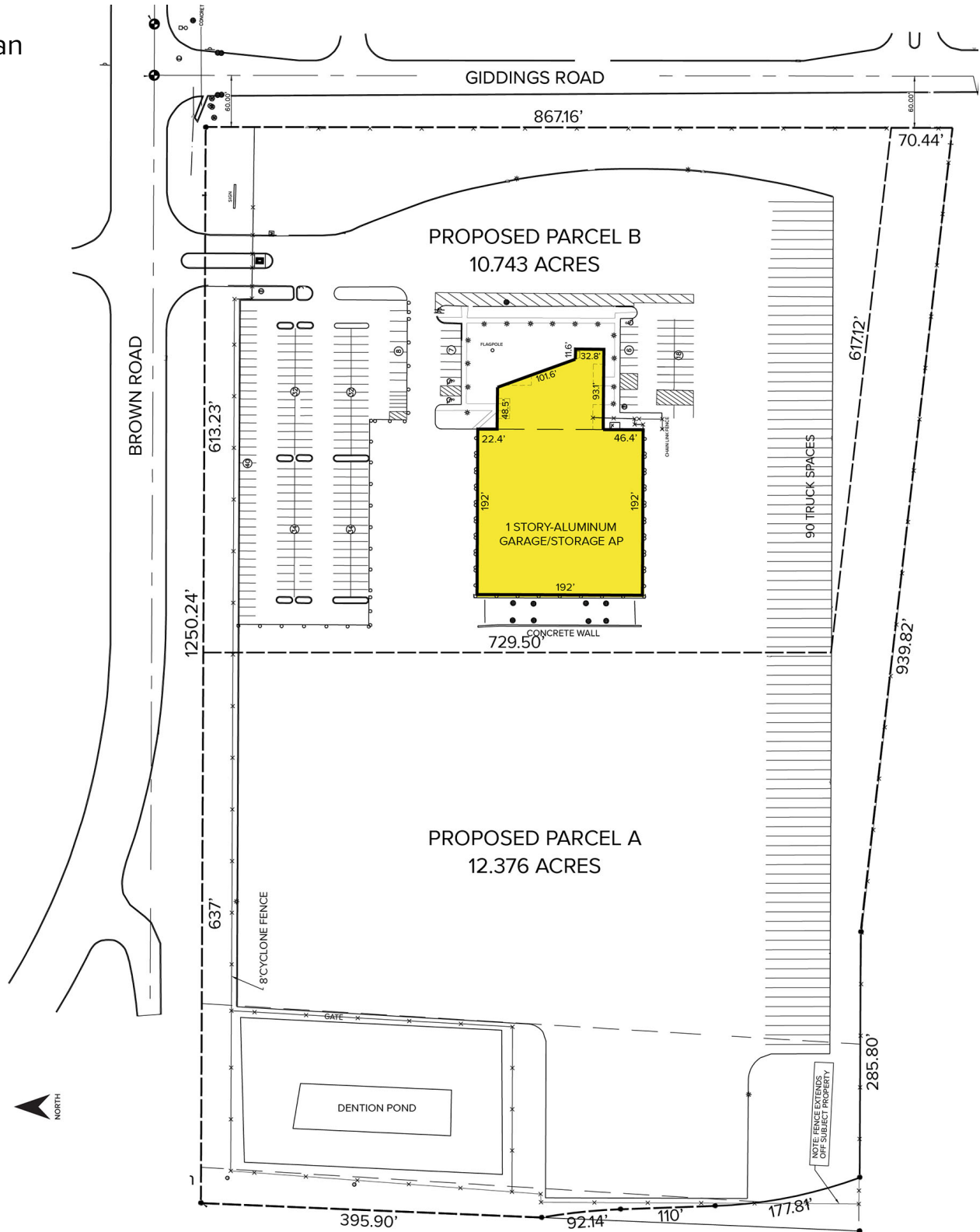
SIGNATURE ASSOCIATES
One Towne Square, Suite 1200
Southfield, MI 48076
www.signatureassociates.com

1750 Brown Road – Auburn Hills, Michigan

Investment Sale – Industrial

53,894
Square Feet

Site Plan



For more information, please contact:

PAUL HOGE
(248) 948 0103
paulhoge@signatureassociates.com

SIGNATURE ASSOCIATES
One Towne Square, Suite 1200
Southfield, MI 48076
www.signatureassociates.com

1750 Brown Road – Auburn Hills, Michigan

Investment Sale – Industrial

53,894
Square Feet

Aerial



For more information, please contact:

PAUL HOGE
(248) 948 0103
paulhoge@signatureassociates.com

SIGNATURE ASSOCIATES
One Towne Square, Suite 1200
Southfield, MI 48076
www.signatureassociates.com