

HILLVIEW EXECUTIVE PARK

830 & 920 HILLVIEW COURT, MILPITAS, CA

Class A Office Space



**New Common
Area Upgrades**



www.ngkf.com

Contact Exclusive Agent

Tom Todd
ttodd@ngkf.com
408.982.8473
CA RE License #01200289

3055 Olin Street, Suite 2200
San Jose, CA 95128
P: 408.970.9990
F: 408.987.4156

The distributor of this communication is performing acts for which a real estate license is required. The information contained herein has been obtained from sources deemed reliable but has not been verified and no guarantee, warranty or representation, either express or implied, is made with respect to such information. Terms of sale or lease and availability are subject to change or withdrawal without notice.

10-1226 - 08/18

- Two Class A Office Buildings
- Professional Office Park Environment
- Upgraded Lobbies & Common Areas
- Ample Parking: 4/1,000 Ratio
- Great Access to Highway 680, 880, and 237
- Walking Distance to Hotels & Restaurants
- Secure Card Key Access After Hours
- Close to City Hall
- Numerous Retail Services & Restaurants Nearby



Contact Exclusive Agent

Tom Todd
ttodd@ngkf.com
408.982.8473
CA RE License #01200289

BUILDING	SUITE #	SQUARE FEET
920 Hillview Court	170	±1,375 SF
830 Hillview Court	120	±1,718 SF

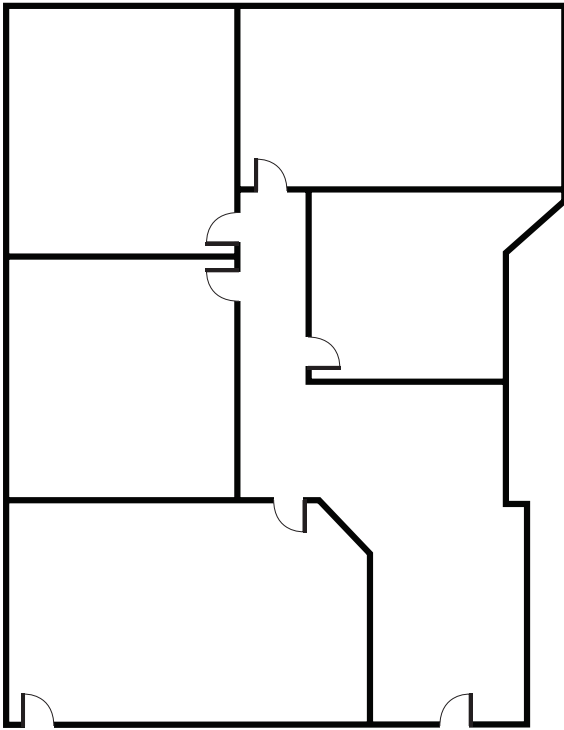


Contact Exclusive Agent

Tom Todd
ttodd@ngkf.com
408.982.8473
CA RE License #01200289

920 Hillview Court • Suite 170

±1,375 SF



830 Hillview Court • Suite 120

±1,718 SF

