

## Marymoor Industrial Building

17622 NE 67th Court  
Redmond, WA

### NEW OWNERSHIP

Total building size: 67,009 SF

Multiple Options:

14,000 SF (3,000 SF office) up to  
67,000 SF (15,000 SF office)

New roof, energy efficient lighting,  
exterior improvements

\$0.60/SF, NNN for Warehouse  
\$1.25/SF, NNN for Office

Dock and grade level loading

24' clear height warehouse

Heavy power

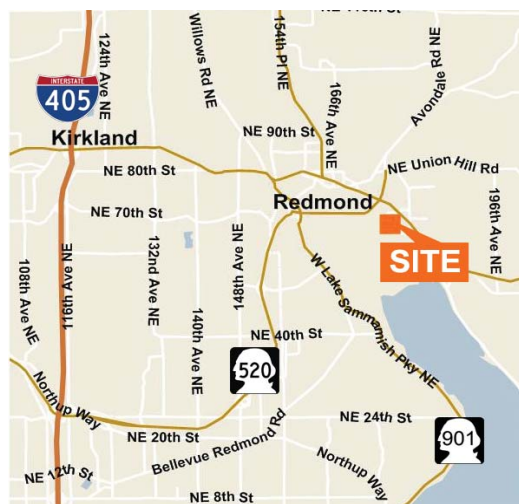
New pedestrian/bicycle path  
planned next to building

Corporate image and corner location

Available Fall 2012



### Location

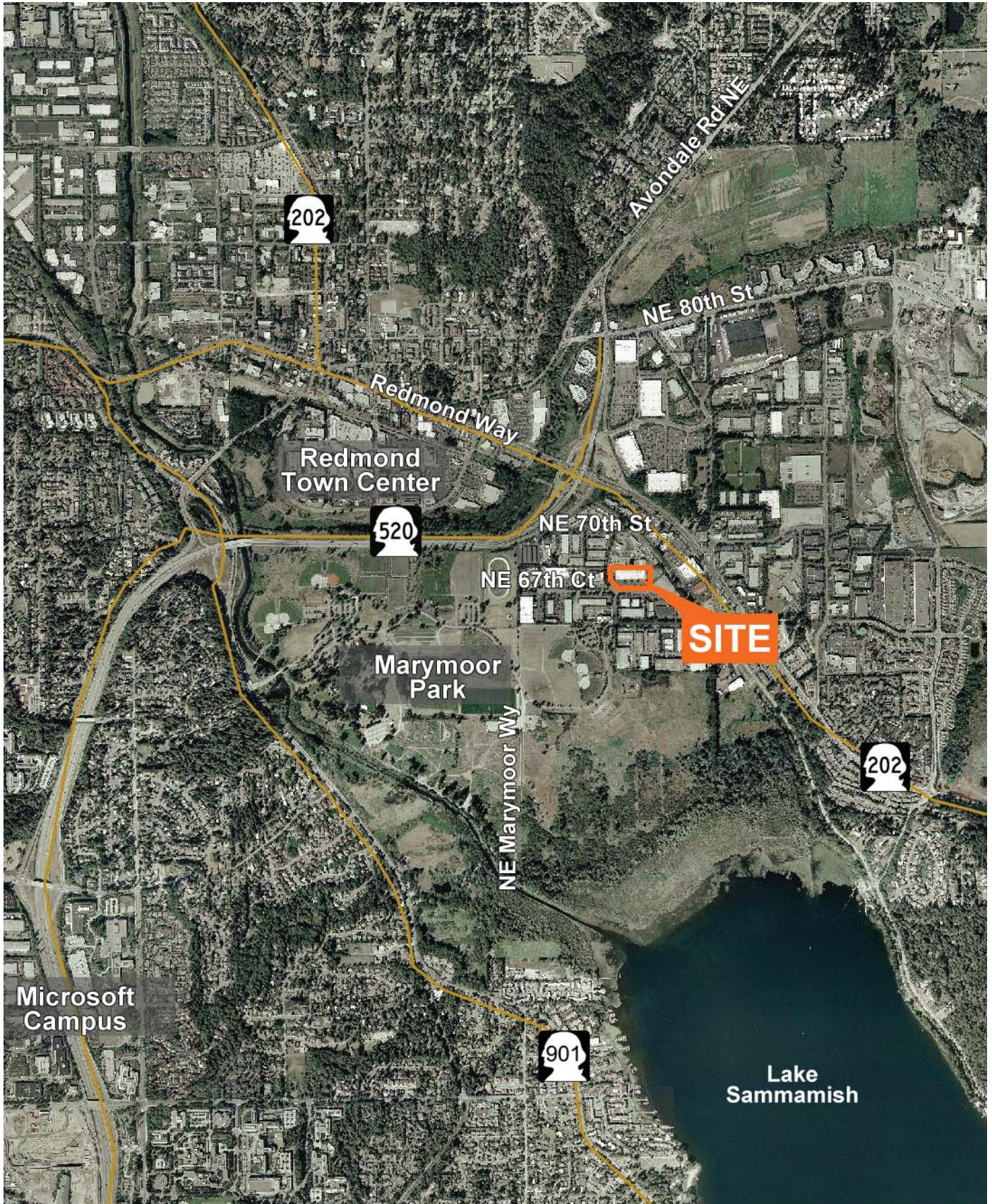


### Contact

**Joe Lynch**  
425.450.1128  
jlynch@kiddermathews.com

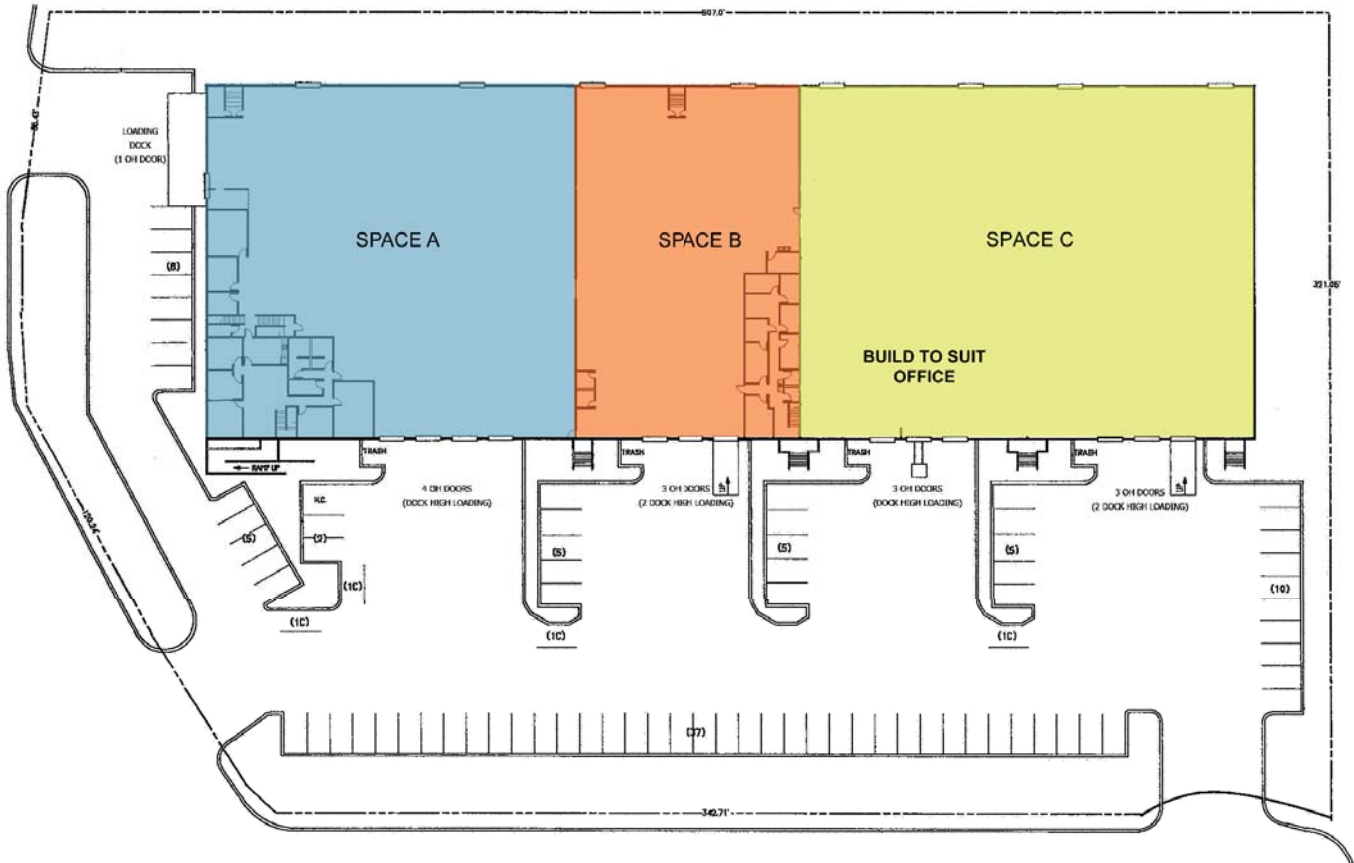
**Zach Vall-Spinosa**  
425.450.1115  
zachv@kiddermathews.com







## Marymoor Industrial Building



AVAILABLE SPACE	
Space Available	Square Footage
Space A	23,268
Space B	14,239
Space C	29,501
Spaces A-B Combined	37,507
Spaces B-C Combined	43,740
Spaces A-B-C Combined	67,008

### Contact

**Joe Lynch**  
 425.450.1128  
 jlynch@kiddermathews.com

**Zach Vall-Spinosa**  
 425.450.1115  
 zachv@kiddermathews.com