

36 DITMARS STREET

BUSHWICK, BROOKLYN



**RETAIL SPACE
FOR LEASE**

BUSHWICK BROOKLYN

36 DITMARS STREET

SPACE HIGHLIGHTS

LOCATION

Corner of Ditmars St
& Myrtle Avenue

SPACE

1,200 SF

CEILING HEIGHT

10.75 FT

FRONTAGE

18.25 FT

DIMENSIONS

Variable

ZONING

R6

OCCUPANCY

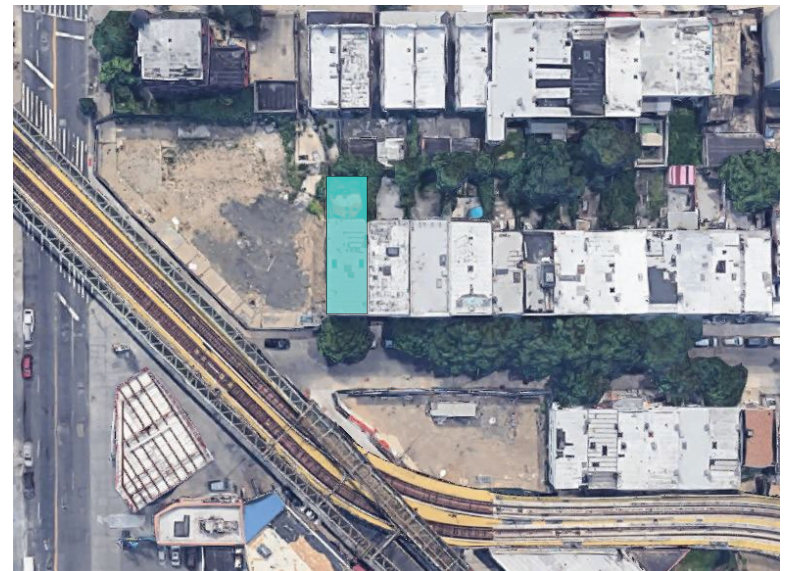
Immediate

ASKING RENT

Upon Request

HIGHLIGHTS

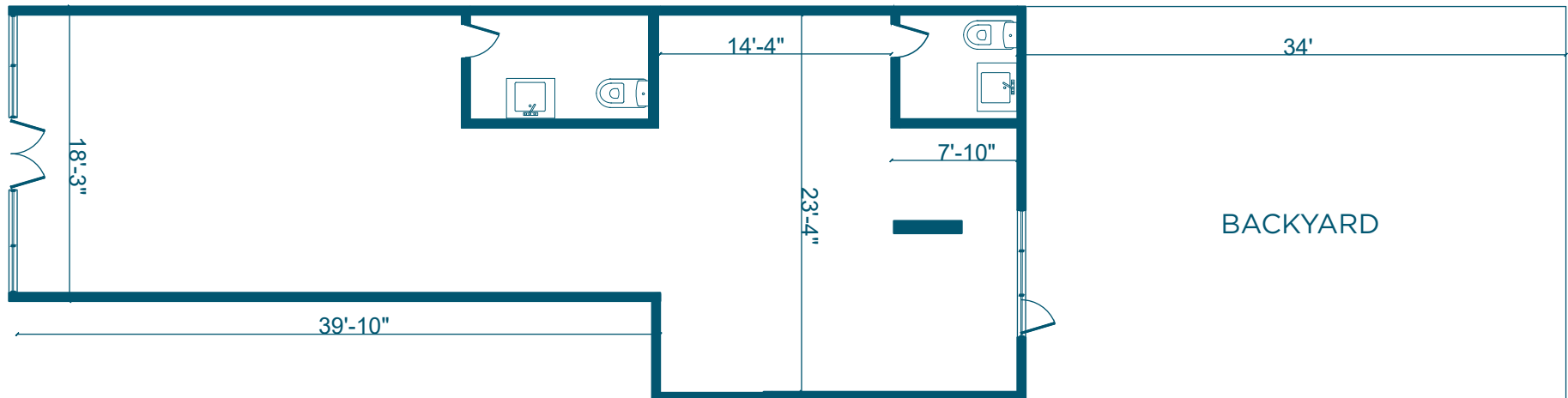
- High Ceilings
- Outdoor Spaces (Front & Backyard)
- Next to BRAND NEW LUXURY DEVELOPMENTS!
- Near Myrtle Avenue J/M/Z Subway Stations



BUSHWICK BROOKLYN

36 DITMARS STREET

FLOORPLANS & DETAILS



SPACE

Size	1,200 SF
Ceiling Height	10.75 FT
Frontage	18.25 FT
Dimensions	Variable

BUSHWICK BROOKLYN

36 DITMARS STREET

EXISTING CONDITION



BUSHWICK BROOKLYN

36 DITMARS STREET

EXISTING CONDITION



NEIGHBORHOOD DEMOGRAPHICS



190,233

POPULATION
WITHIN 1-MILE
RADIUS



34.50 Years

AVERAGE
POPULATION
AGE



10.78%

POPULATION
GROWTH
SINCE 2010



\$64,622

AVERAGE HHI
WITHIN 1-MILE
RADIUS



4,298

TOTAL BUSINESSES
WITHIN 1-MILE
RADIUS



\$1.3 bn

ANNUAL SPENDING
WITHIN 1-MILE
RADIUS

BUSHWICK BROOKLYN

36 DITMARS STREET

NEIGHBORHOOD & TRANSPORTATION

NEIGHBORHOOD TENANTS

- Happyfun Hideaway
- Freedom Triangle
- Hobby Bikes
- Richie's Gym
- Rebecca's
- Bizarre
- Bossa Nova Civic Club
- Market Hotel
- Mr. Kiwi's
- Popeyes
- Beattie Square
- Sprout Market
- Four Sisters
- Buntopia
- Papa John's Pizza
- Brooklyn Whiskers
- Sheenwear Inc
- Otion Front Studio
- Bossa Nova Civic Club
- The Awkward Score

TRANSPORTATION

- 3 Min Walk at Myrtle Avenue (0.1 mi)
- 7 Min Walk at Central Avenue (0.3 mi)
- 8 Min Walk at Kosciuszko Street (0.4 mi)
- 11 Min Walk at Flushing Avenue (0.5 mi)
- 17 Min Walk at Morgan Avenue (0.9 mi)



BUSHWICK BROOKLYN

36 DITMARS STREET

CONTACT



JOSEPH DIPIAZZA
917.789.3009
JDIPIAZZA@EXRNY.COM

