

16080 S. MUR-LEN ROAD OLATHE, KANSAS 66062

LAND FOR SALE | 12± ACRES

PROPERTY FEATURES

- South of the intersection of 159th Street and Mur-Len
 - Terrific development site with great commercial potential
 - Next to Price Chopper, retail shops, and restaurants
 - Just north of new subdivisions and booming Olathe growth
- Traffic counts: 8,000+ CPD @ S. Mur-Len Road & 159th Street
- 357' frontage on Mur-Len Road
- All utilities to site (sewer runs through site)
- Curb/gutter/sidewalk, electricity, gas, sewer, streets, water
- Ideal for apartments, senior living, daycare, office, etc.

ADDITIONAL INFO

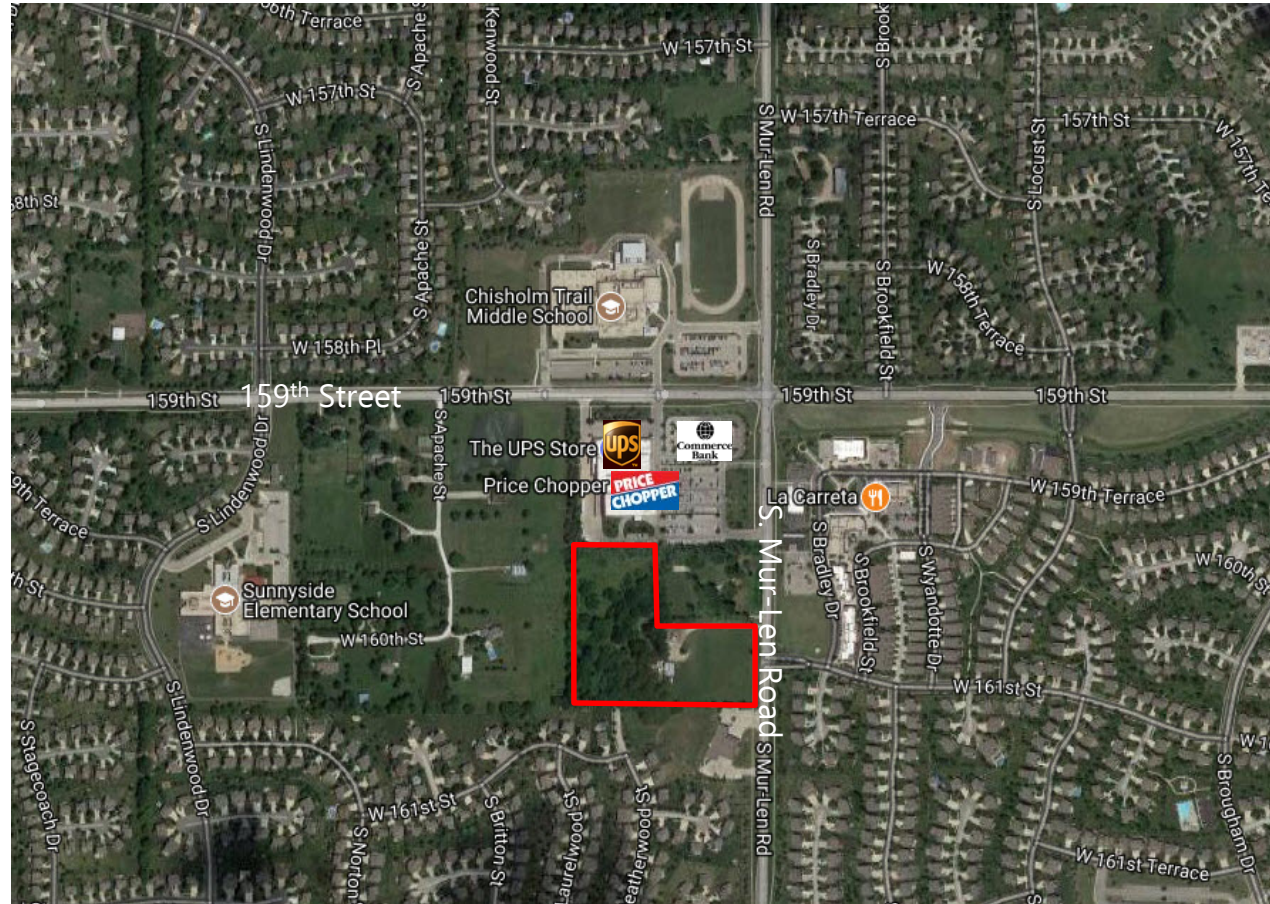
SALES PRICE \$2,400,000 (\$4.59/SF)

SIZE 12± Acres

ZONING Agricultural (Olathe Comprehensive Plan: Mixed Density Residential Neighborhood)

PARCEL ID 6F241418-3010

TAXES (2016) \$4,653 or \$0.01/SF



For more information, please contact:

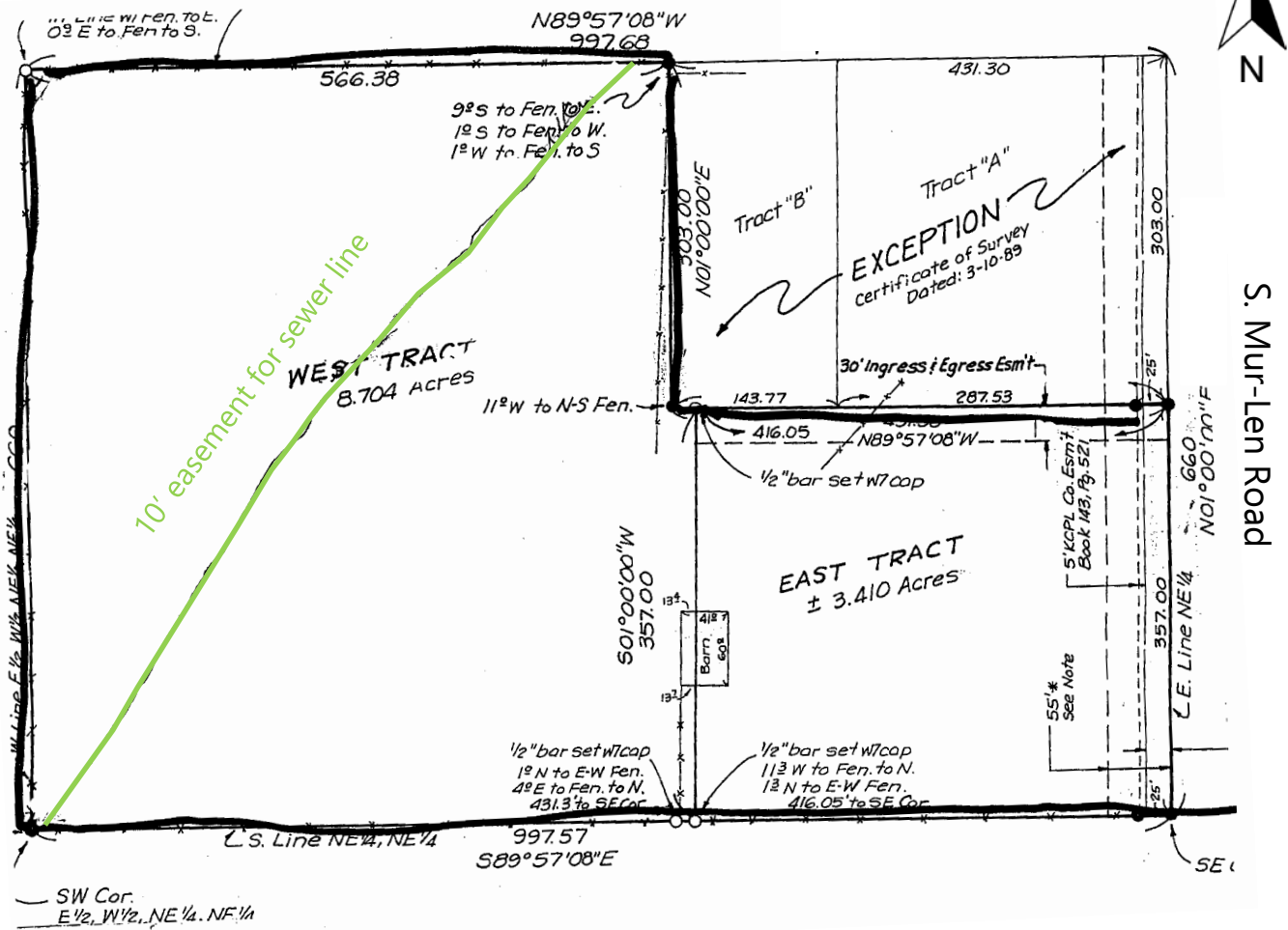
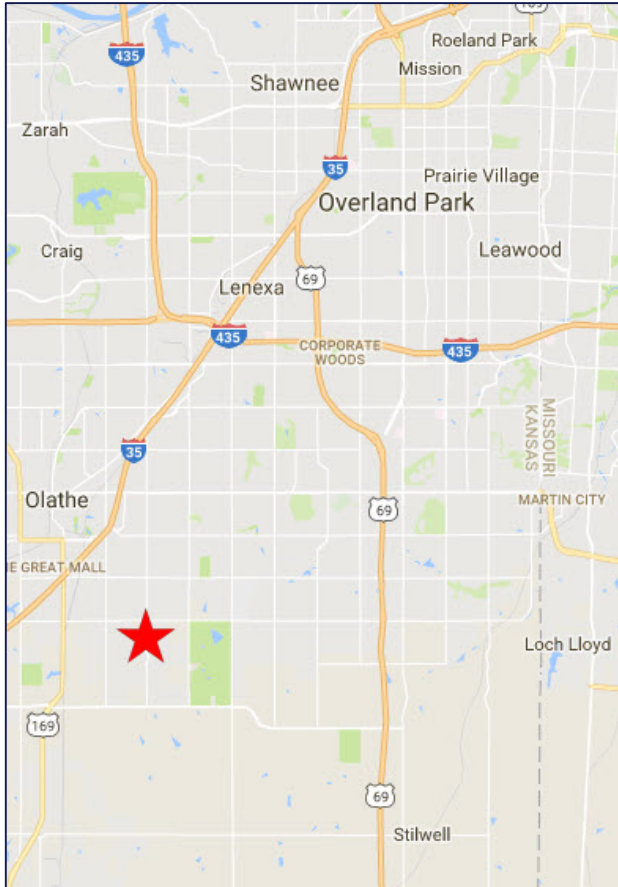
LEONARD POPPLEWELL
Commercial Brokerage
913.709.3623 mobile
lpopplewell@kessingerhunter.com

SHER BLANDFORD
Commercial Brokerage
816.936.8525 direct
sblandford@kessingerhunter.com

KESSINGER/HUNTER & COMPANY, LC
2600 Grand Boulevard, Suite 700
Kansas City, MO 64108
816.842.2690
www.kessingerhunter.com

16080 S. MUR-LEN ROAD, OLATHE, KANSAS 66062

Land for Sale



For more information, please contact:

LEONARD POPPLEWELL
Commercial Brokerage
913.709.3623 mobile
lpopplewell@kessingerhunter.com

SHER BLANDFORD
Commercial Brokerage
816.936.8525 direct
sblandford@kessingerhunter.com

KESSINGER/HUNTER & COMPANY, LC
2600 Grand Boulevard, Suite 700
Kansas City, MO 64108
816.842.2690
www.kessingerhunter.com