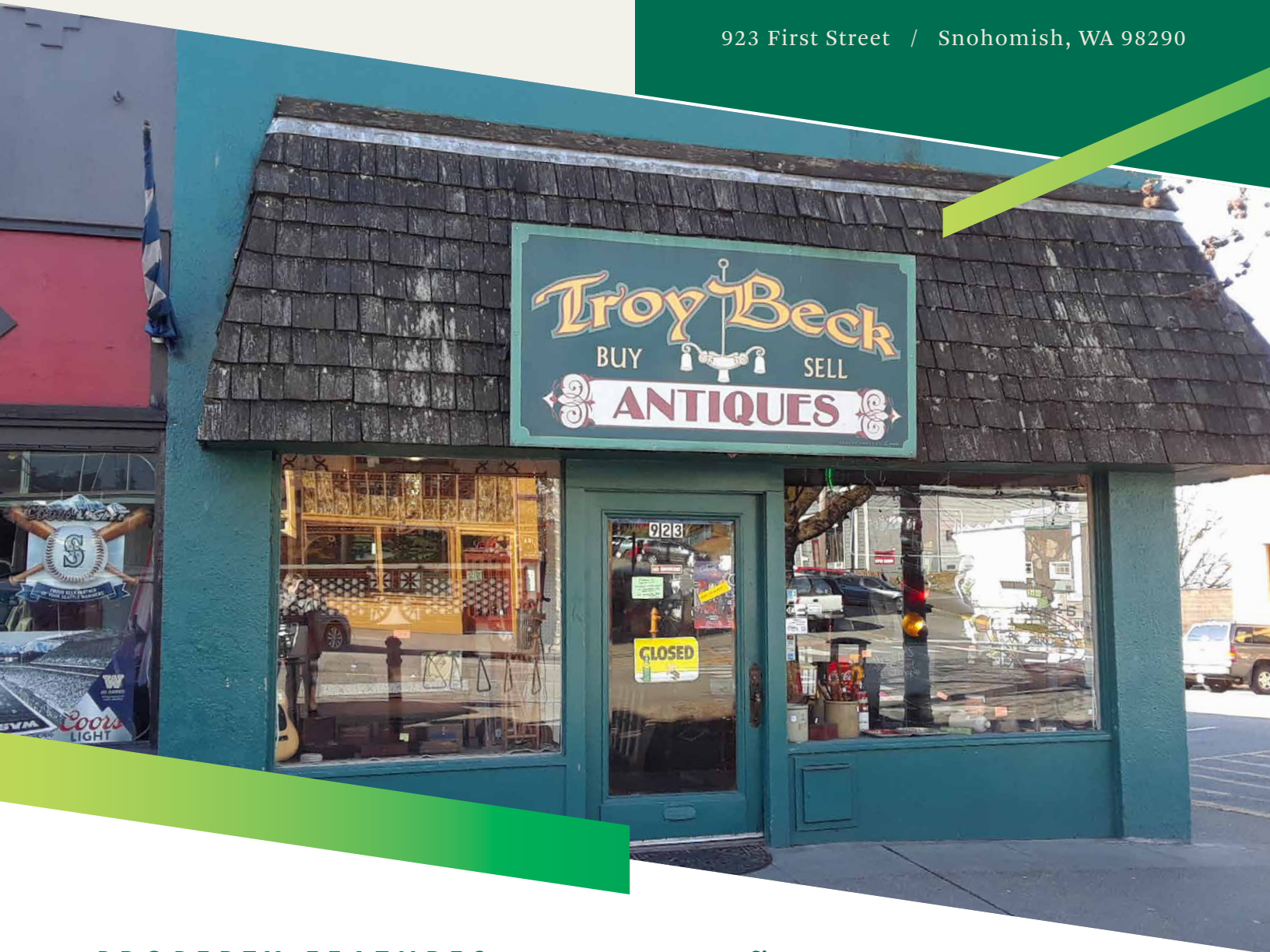


F O R S A L E

HISTORIC RETAIL BUILDING

923 First Street / Snohomish, WA 98290



PROPERTY FEATURES

This property is centrally located in historic downtown Snohomish, minutes from the Harvey Airfield, with convenient access to Highway 2 and Highway 9.

Built in 1927, this 3,024 square foot building on a 2,100 square foot site has a rare corner location with high visibility and ample street parking.

- **Size**
3,024 sq. ft. building on a 2,100 sq. ft. site
- **Convenient Access**
Minutes from Hwy 2 and Hwy 9
- **Owner User Opportunity**
Rare, owner/user opportunity prominently located on historic 1st Street
- **Zoning**
HB - City of Snohomish
- **Purchase Price**
\$585,000



PLEASE CONTACT:

RIC BRANDT

Senior Vice President
+1 425 462 6901
ric.brandt@cbre.com

ERIK LARSON

Vice President
+1 425 462 6954
erik.larson@cbre.com

JOHN BAUER

Senior Vice President
+1 425 462 6906
john.bauer@cbre.com

CBRE, INC.

929 108th Avenue NE
Suite 700
Bellevue, WA. 98004

© 2019 CBRE, Inc. All rights reserved. This information has been obtained from sources believed reliable, but has not been verified for accuracy or completeness. You should conduct a careful, independent investigation of the property and verify all information. Any reliance on this information is solely at your own risk. CBRE and the CBRE logo are service marks of CBRE, Inc. All other marks displayed on this document are the property of their respective owners, and the use of such logos does not imply any affiliation with or endorsement of CBRE. Photos herein are the property of their respective owners. Use of these images without the express written consent of the owner is prohibited. 9-9-2019 AM