

# CUPERTINO OFFICE SPACE FOR LEASE

19200 Stevens Creek Boulevard  
Cupertino, California

- **New Common Area Upgrades**
- **New EV Charging Stations**
- Suite 100: ±5,717 SF - Available March 1, 2021  
Suite 240: ±1,551 SF - Available Now
- Directly Across from **MAIN<sup>st</sup>  
CUPERTINO**  
...with ±130K SF Retail (±50K SF  
Restaurants Including Philz Coffee, Eureka!,  
Oren's Hummus, Alexander's Steakhouse,  
Lazy Dog, and many others) and 180  
Room Marriott Residence Inn Hotel
- Extensive Windowline
- ±4/1000 Parking
- Restrooms and Showers Recently  
Renovated
- Easy Access to Highways 280 & 85
- Walking Distance to Valco  
Fashion Park and Other Services
- A Cypress Properties Owned  
and Managed Building



NEWMARK

Mark Daschbach  
650.688.8540  
mdaschbach@ngkf.com  
CA RE License #00871922

John McKenna  
650.688.8548  
jmckenna@ngkf.com  
CA RE License #01276576

245 Lytton Avenue, Suite 150, Palo Alto, CA 94301

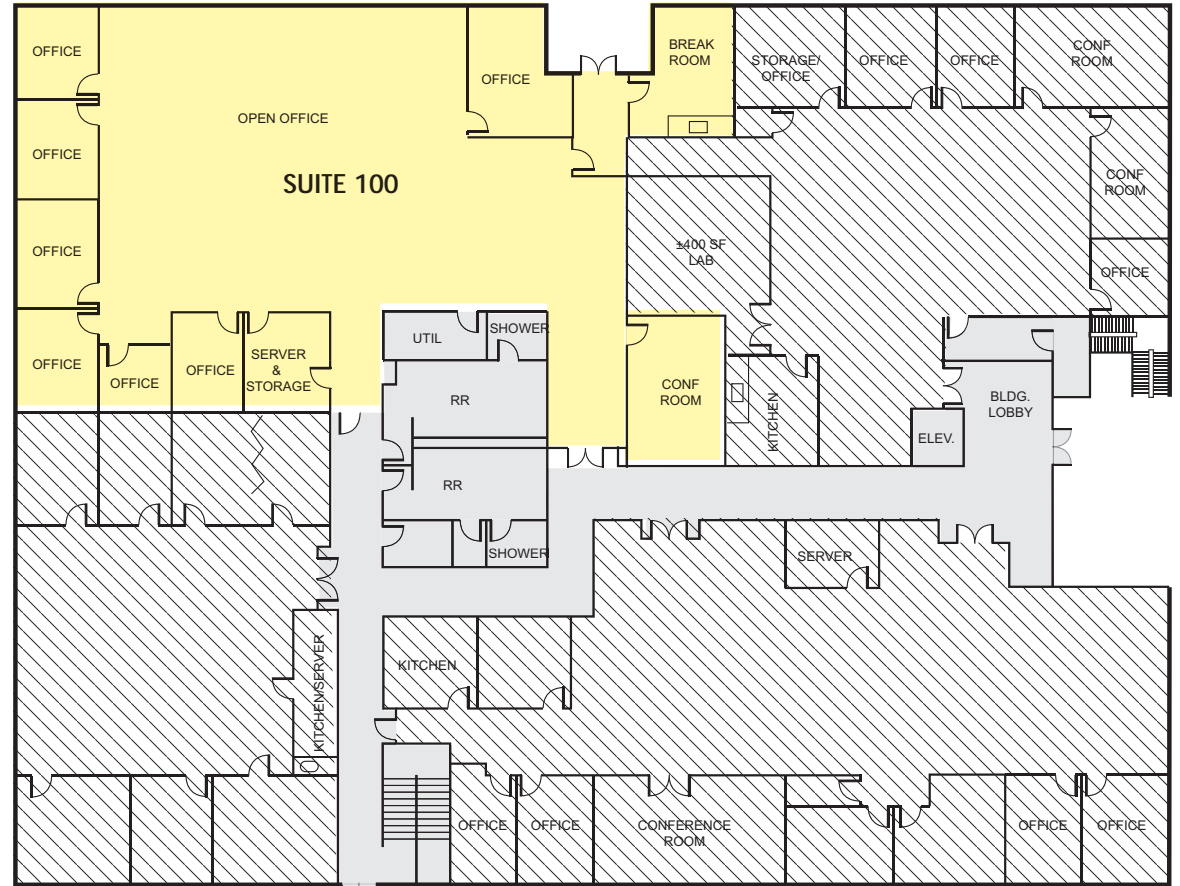


# CUPERTINO OFFICE SPACE FOR LEASE

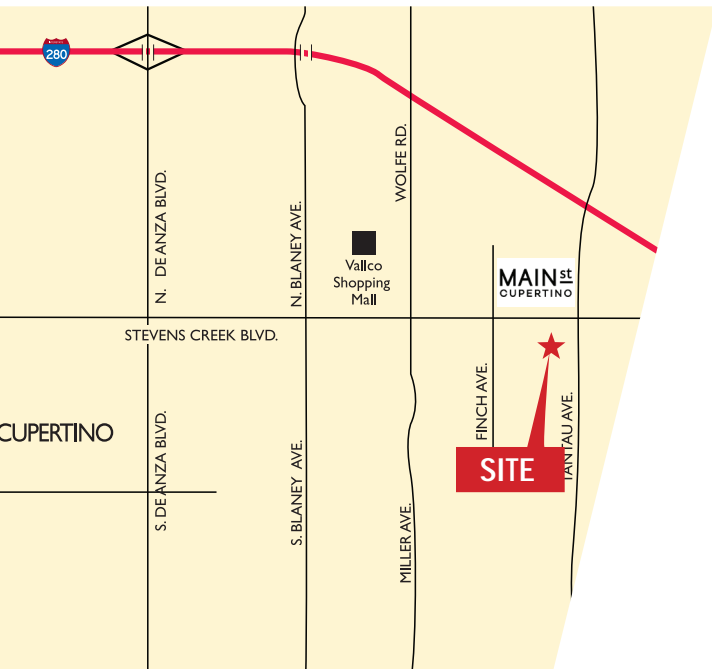
19200 Stevens Creek Boulevard  
Cupertino, California



## FLOORPLAN - FIRST FLOOR



- AVAILABLE
- LEASED
- COMMON AREA



Mark Daschbach  
650.688.8540  
mdaschbach@ngkf.com  
CA RE License #00871922

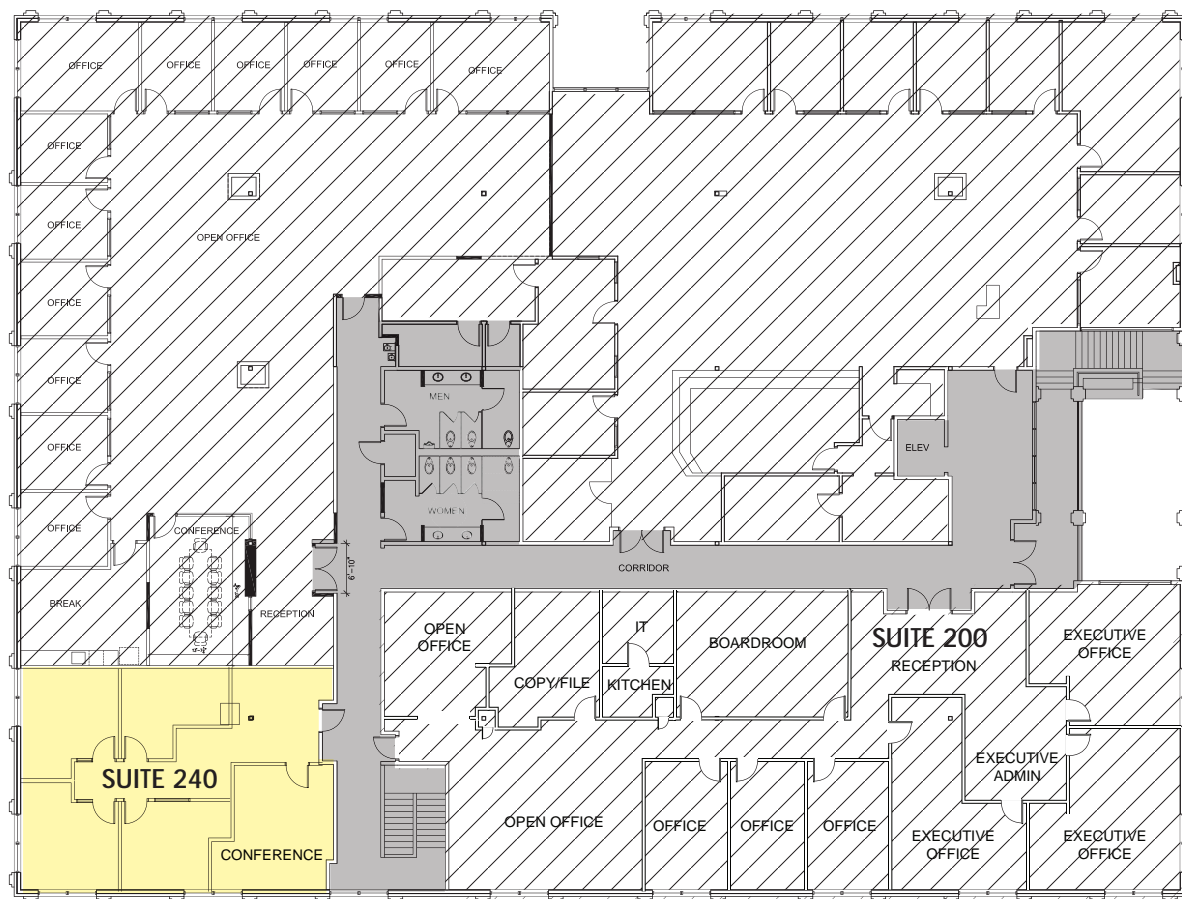
John McKenna  
650.688.8548  
jmkenna@ngkf.com  
CA RE License #01276576

# CUPERTINO OFFICE SPACE FOR LEASE

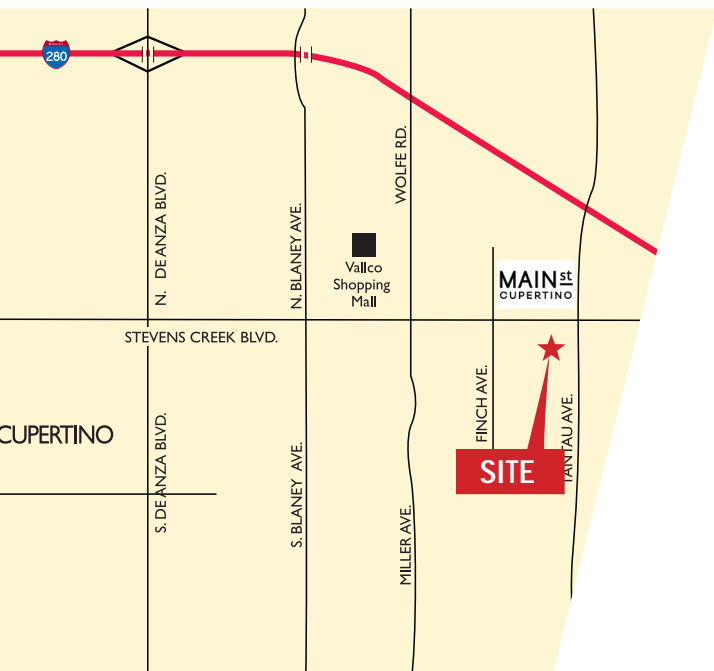
19200 Stevens Creek Boulevard  
Cupertino, California



## FLOORPLAN - SECOND FLOOR



- AVAILABLE
- LEASED
- COMMON AREA



Mark Daschbach  
650.688.8540

[mdaschbach@ngkf.com](mailto:mdaschbach@ngkf.com)  
CA RE License #00871922

John McKenna  
650.688.8548

[jmckenna@ngkf.com](mailto:jmckenna@ngkf.com)  
CA RE License #01276576



# CUPERTINO OFFICE SPACE FOR LEASE

## 19200 Stevens Creek Boulevard Cupertino, California



New Lobby



New Glass Entry Doors



Mark Daschbach  
650.688.8540  
mdaschbach@ngkf.com  
CA RE License #00871922

John McKenna  
650.688.8548  
jmckenna@ngkf.com  
CA RE License #01276576



# CUPERTINO OFFICE SPACE FOR LEASE

## 19200 Stevens Creek Boulevard Cupertino, California



Across from  
**MAIN<sup>st</sup>**  
CUPERTINO



NEWMARK

The distributor of this communication is performing acts for which a real estate license is required. The information contained herein has been obtained from sources deemed reliable but has not been verified and no guarantee, warranty or representation, either express or implied, is made with respect to such information. Terms of sale or lease and availability are subject to change or withdrawal without notice. 15-1658-12/20

**Mark Daschbach**  
650.688.8540

[mdaschbach@ngkf.com](mailto:mdaschbach@ngkf.com)  
CA RE License #00871922

**John McKenna**  
650.688.8548

[jmckenna@ngkf.com](mailto:jmckenna@ngkf.com)  
CA RE License #01276576

245 Lytton Avenue, Suite 150, Palo Alto, CA 94301