



MILLENNIUM TOWER

719 2ND AVE | SEATTLE, WA

JESSE OTTELE

206.452.4529

jesse.ottele@nmrk.com

nuveen
REAL ESTATE

CAVAN O'KEEFE

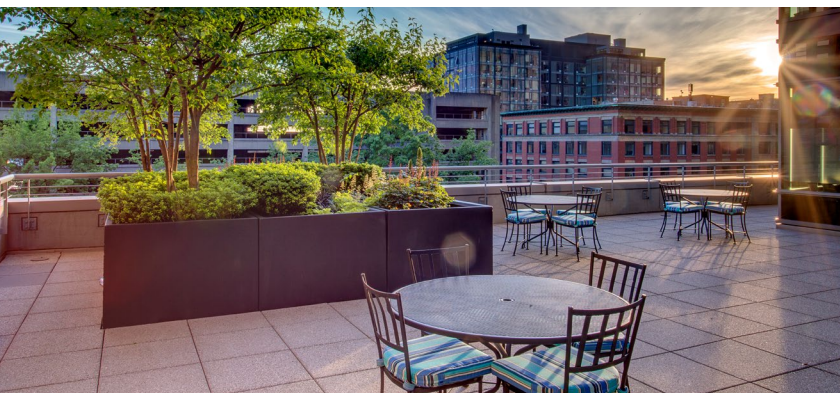
206.395.2903

cavan.okeefe@nmrk.com

NEWMARK



MILLENNIUM TOWER



Flexible lease term 1–5 years (Rate starting at low \$20's/SF NNN)

SPACE	SIZE	AVAILABILITY	VIRTUAL TOURS
Floor 14	3,356 RSF – 11,359 RSF	Available Now	
Floor 12	2,409 RSF – 1,689 RSF	Available Now	
Floor 8	11,841 RSF	Available Now	
Floor 6	3,356 RSF – 7,177 RSF	Available Now	
Floor 5	8,995 RSF	Available Now	
Floor 4	3,060 RSF	Available Now	
Floor 1	1,997 - 5,469 RSF	Available Now	

Long term space options 5–10 years

SPACE	SIZE	SPACE NOTES	AVAILABILITY	VIRTUAL TOURS
Floor 13	14,692 RSF	Full floor, shell space	Available Now	
Floor 11	14,745 RSF	Full floor, shell space	Available Now	
Floor 10	4,803 RSF	Shell space	Available Now	
Floor 7	9,571 RSF	Shell space	Available Now	
Floor 3	19,125 RSF	Full floor open layout	Available Now	

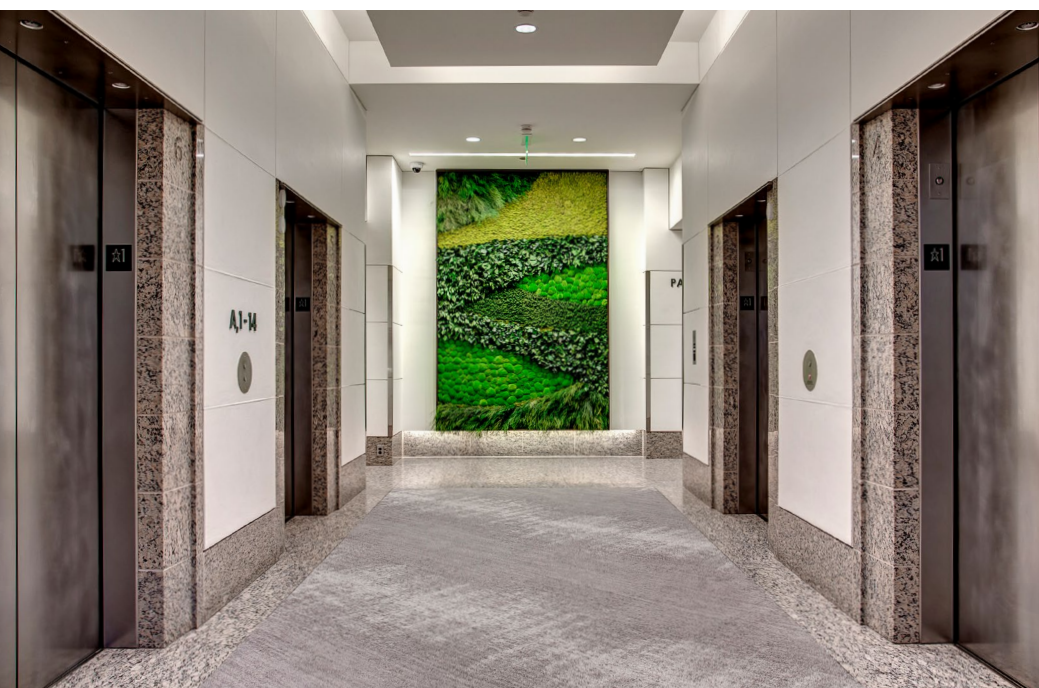
BUILDING HIGHLIGHTS

- Class A office building with efficient floor plates located in Seattle Central Business District
- Within walking distance to the new Seattle waterfront and Pioneer Square.
- Close proximity to Metro buses, Link light rail and Colman Ferry Terminal and Water Taxi
- New Seattle Waterfront currently under construction
- Ideal building for traditional and technology office users.
- Building shower facilities with lockers
- Floor to ceiling glass in SW and NE corners
- Large landscaped deck exclusively for tenant use with seating and WiFi
- Parking ratio of 1/1,000 RSF in building garage with two secure bike storage locations.
- HqO Tenant App for employee engagement





The newly modified Millennium Tower lobby lounge greets you and your guests with natural light and multiple seating options for intimate conversations or simply catching up on a bit of email. Fresh wall accents surround the seating areas for modern elegance, while a moss wall in the elevator bay is like a window to passages throughout the Pacific Northwest. The modern and ample space with visible 24-hour security personnel is the perfect spot to arrange a meeting point for your small group, or settle into one of the cozy seating vignettes with soft textiles for taking a breather after a long day.



Floor 14 | Suite 1400 | 14,715 RSF

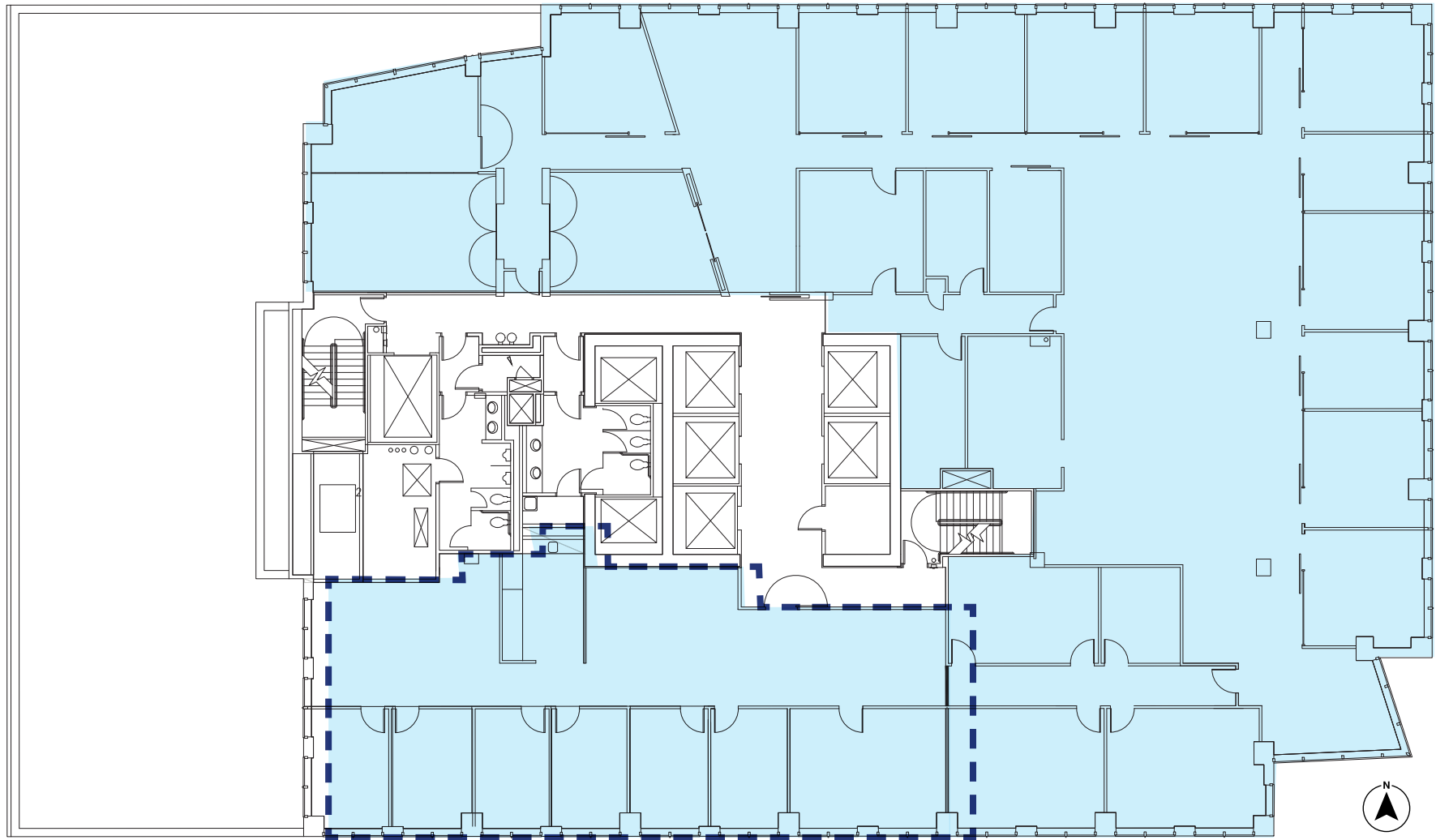
Available Now



- Divisible to 3,356 RSF (SE Corner)
- Full floor

Pioneer Square Views

Water Views



City Views

Floor 13 | Suite 1300 | 14,692 RSF

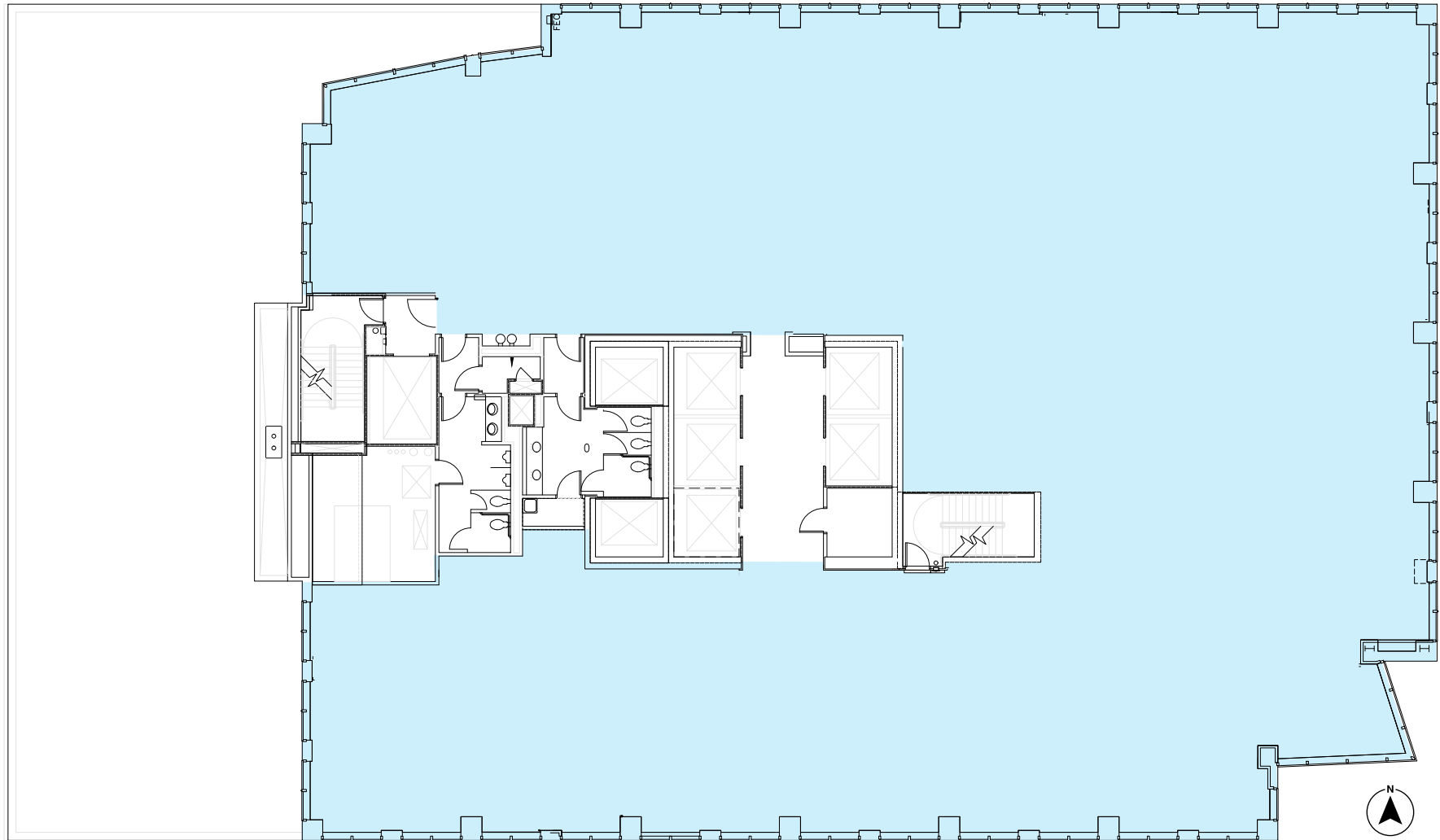
Available Now



- Full floor, market-ready condition

Pioneer Square Port Views

Water Views



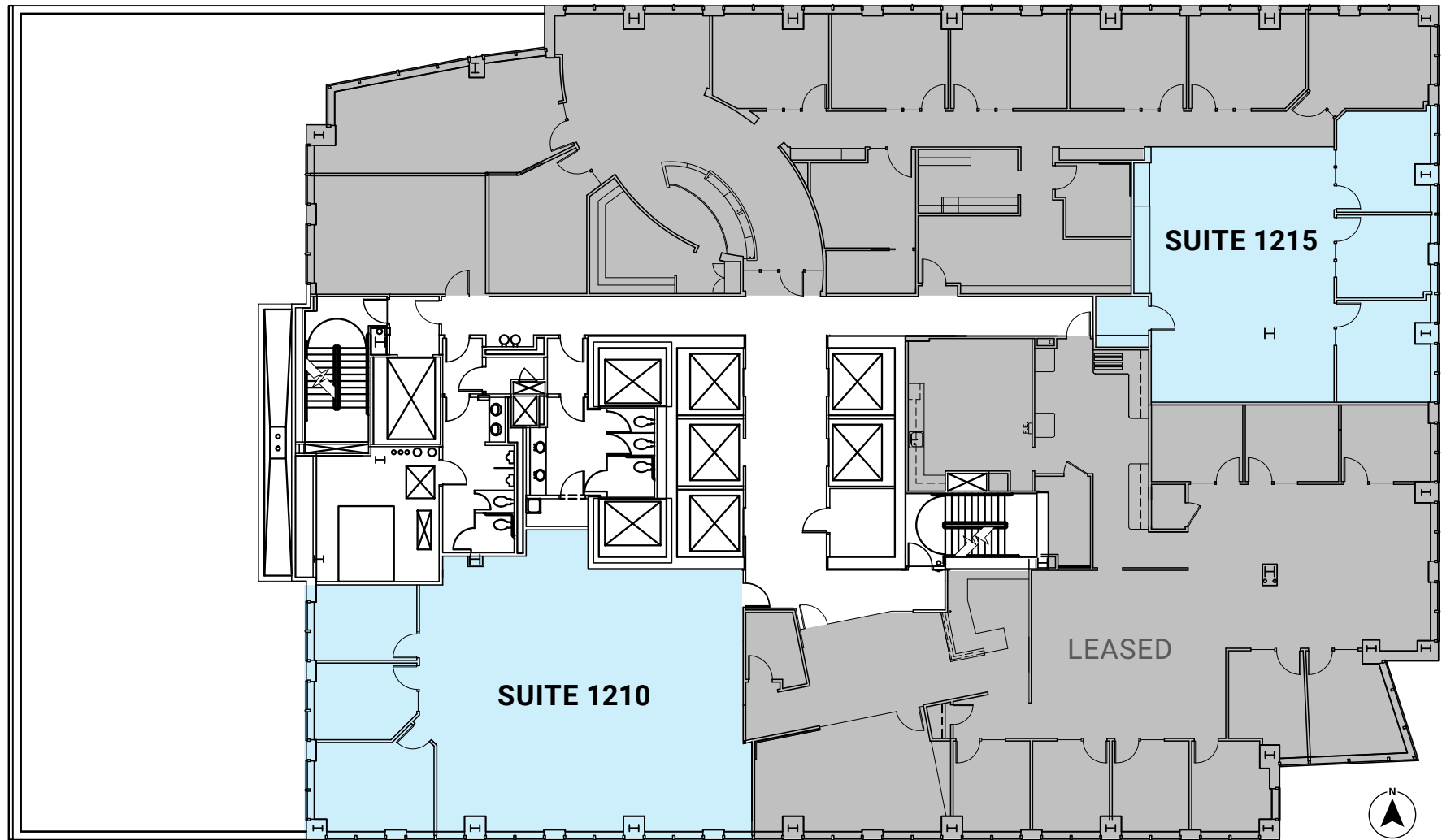
City Views

Floor 12 | Suites 1210 + 1215

- **Suite 1210** | 2,409 RSF | Available Now
- **Suite 1215** | 1,689 RSF | Available Now



Water Views



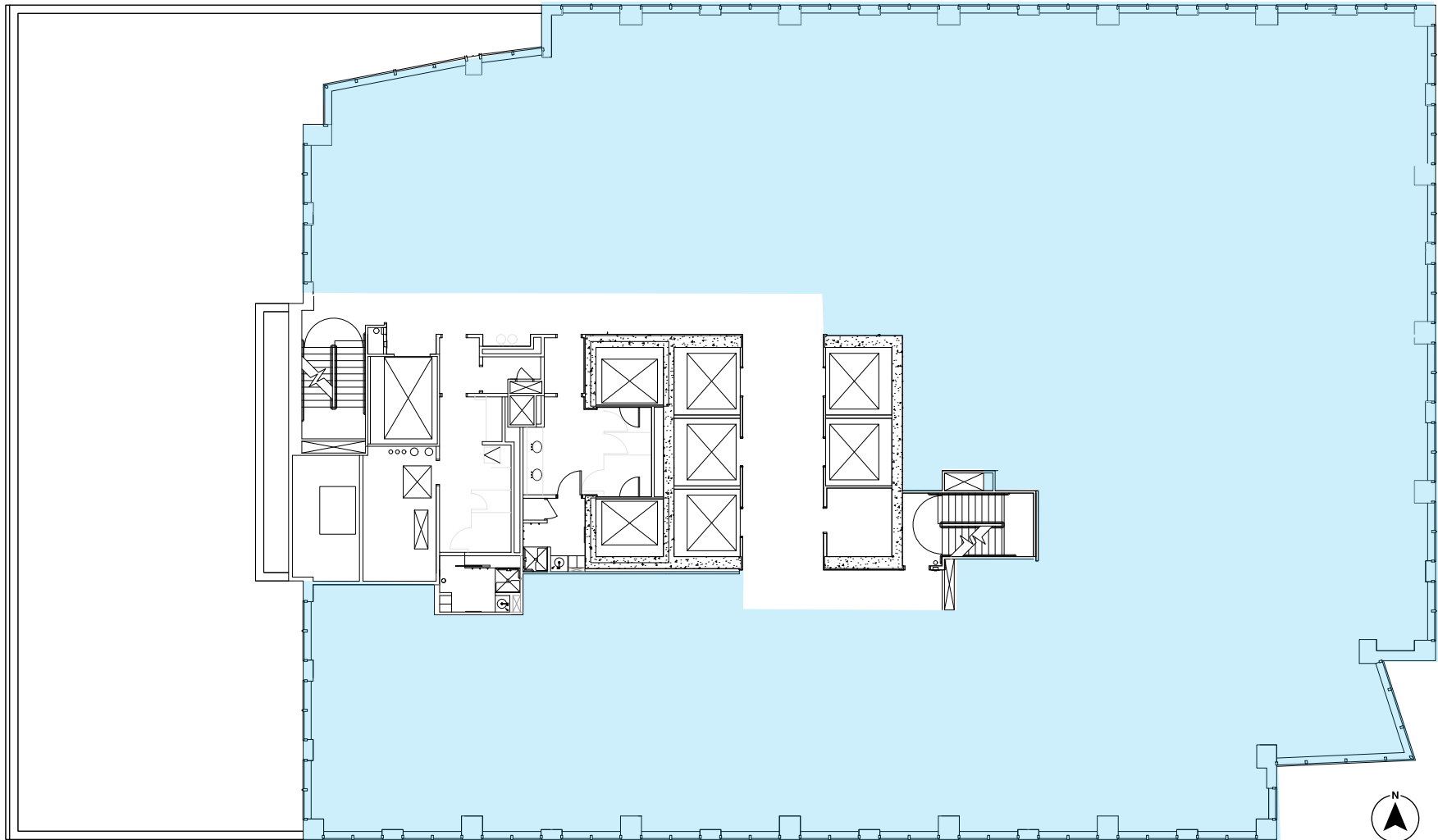
City Views

Floor 11 | Suite 1100 | 14,745 RSF

Available Now



Water Views



City Views

Floor 10 | Suite 1075 | 4,803 RSF

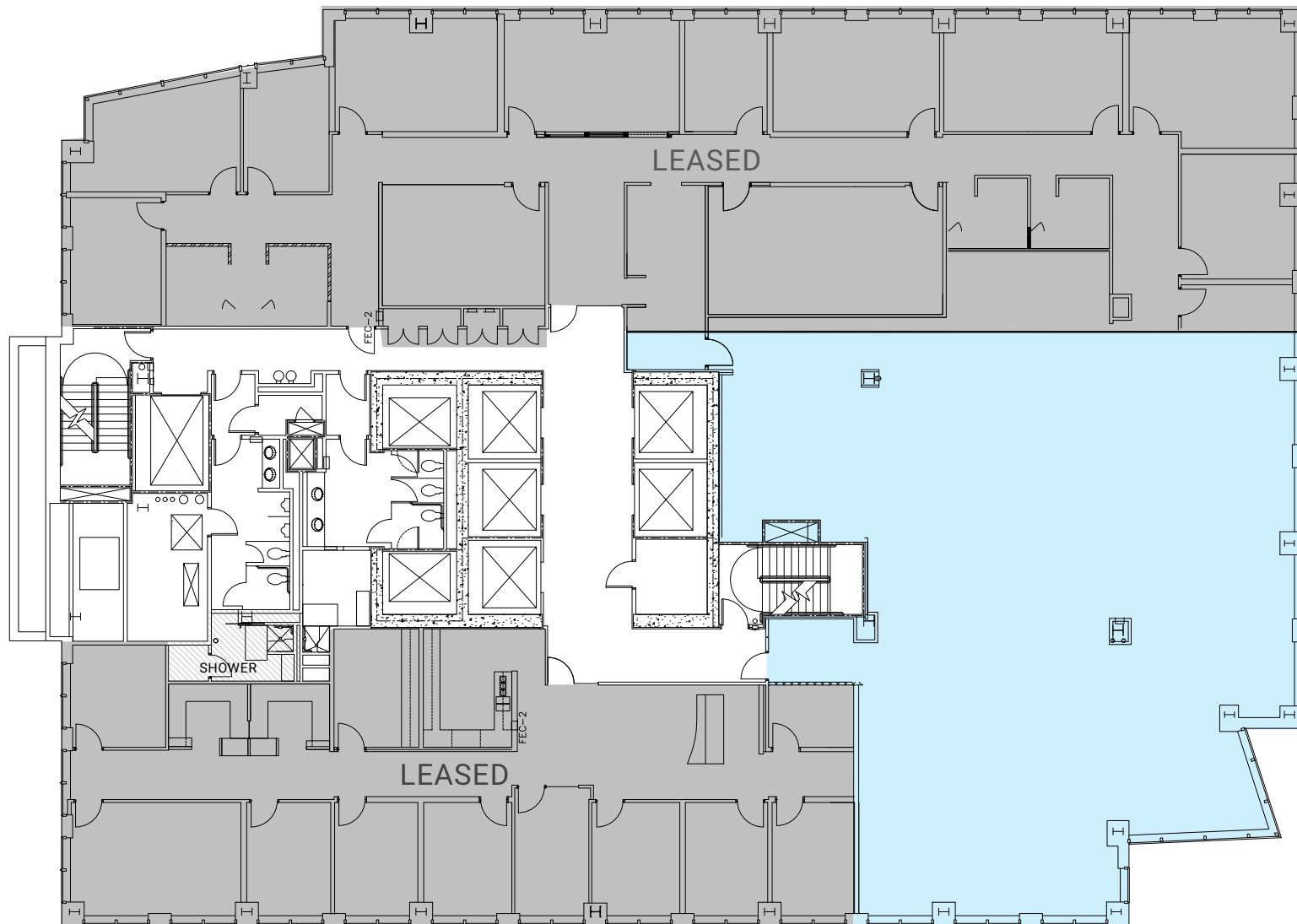
Available Now



[VIEW VIRTUAL TOUR](#)

- Warm shell space
- Shower on floor

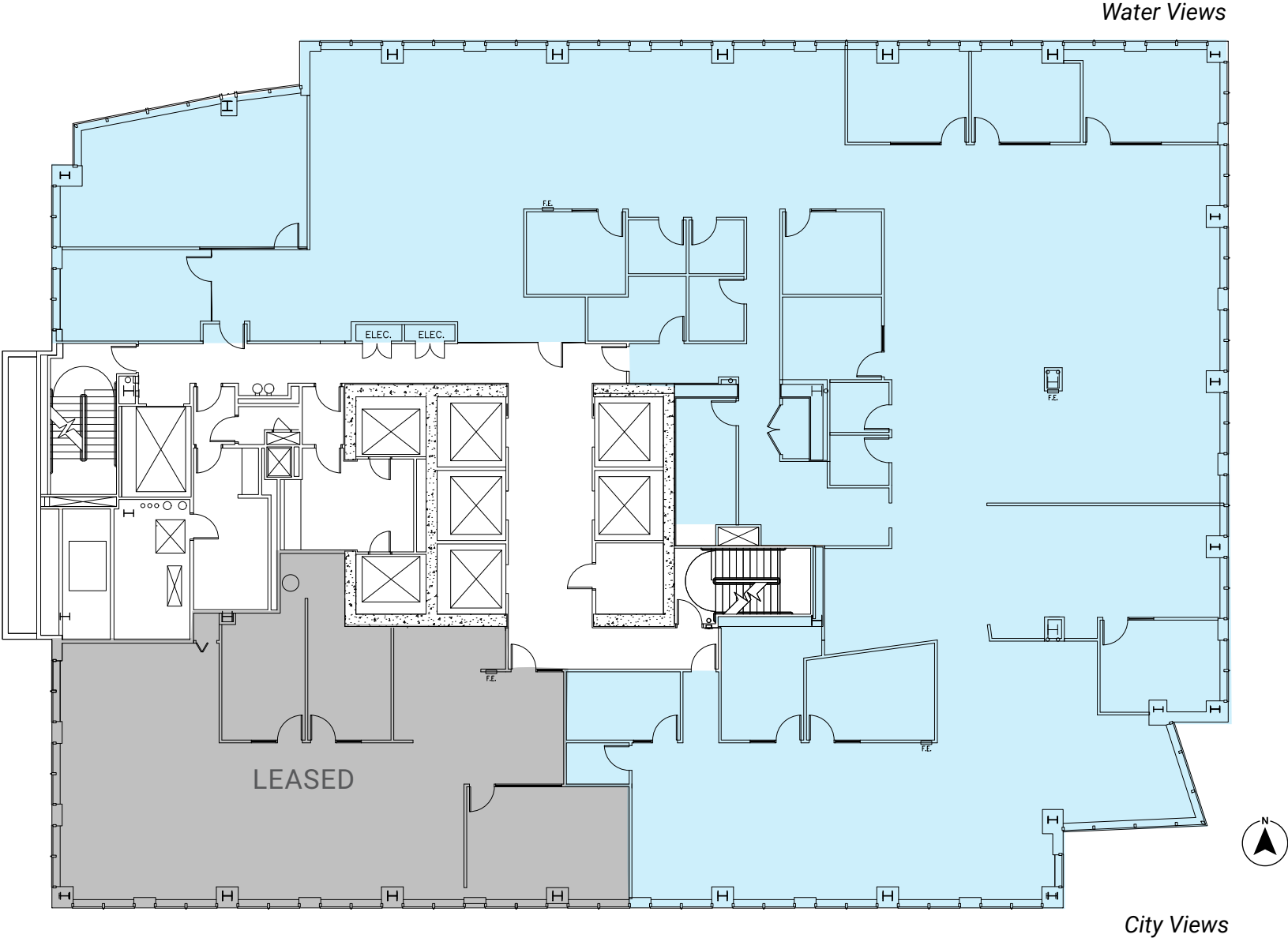
Water Views



City Views

Floor 8 | Suite 800 | 11,841 RSF

Available Now

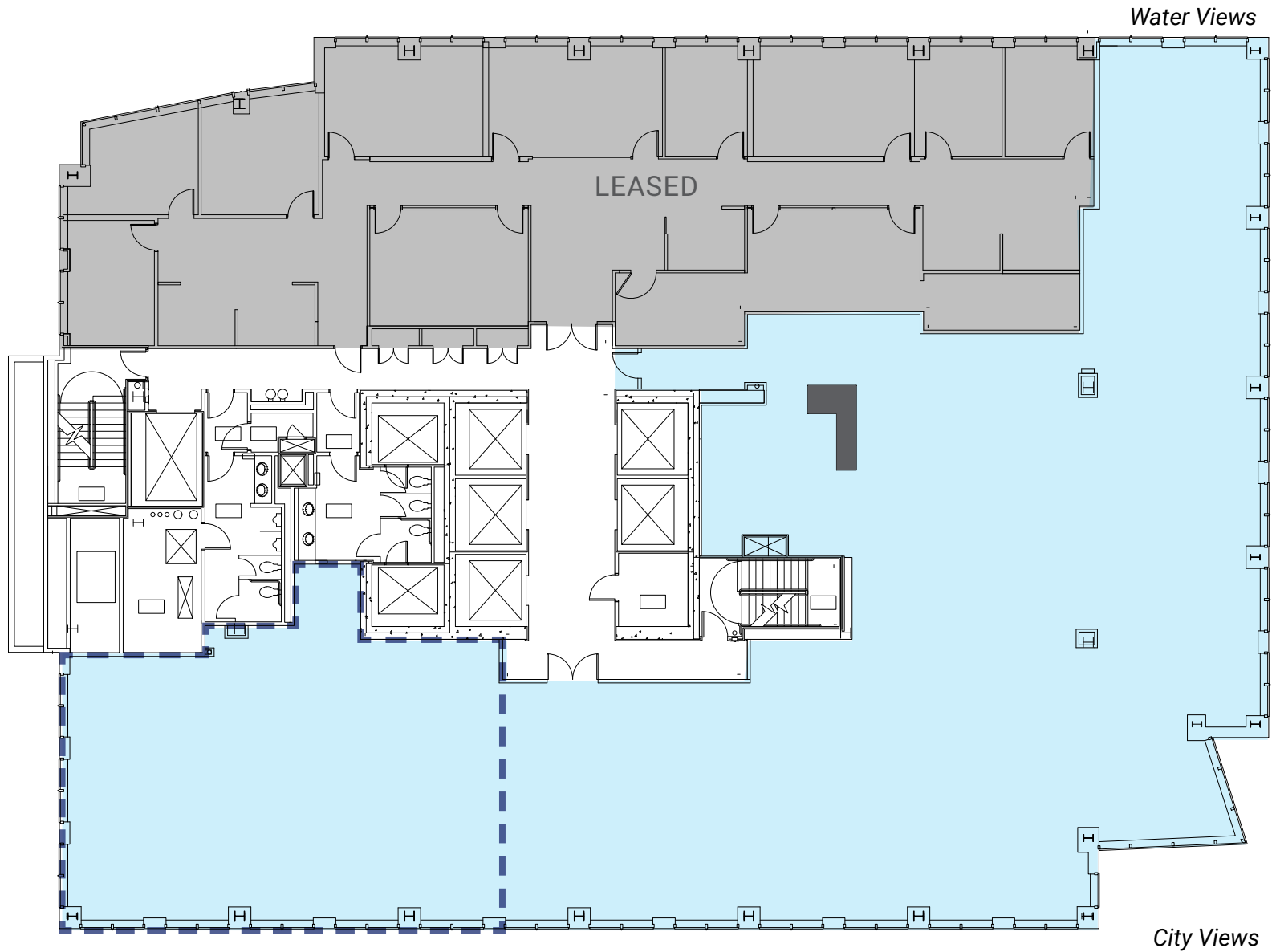


Floor 7 | Suite 701 | 9,571 RSF

Available Now



- Divisible to 2,500 RSF (SE Corner)
- Shell space

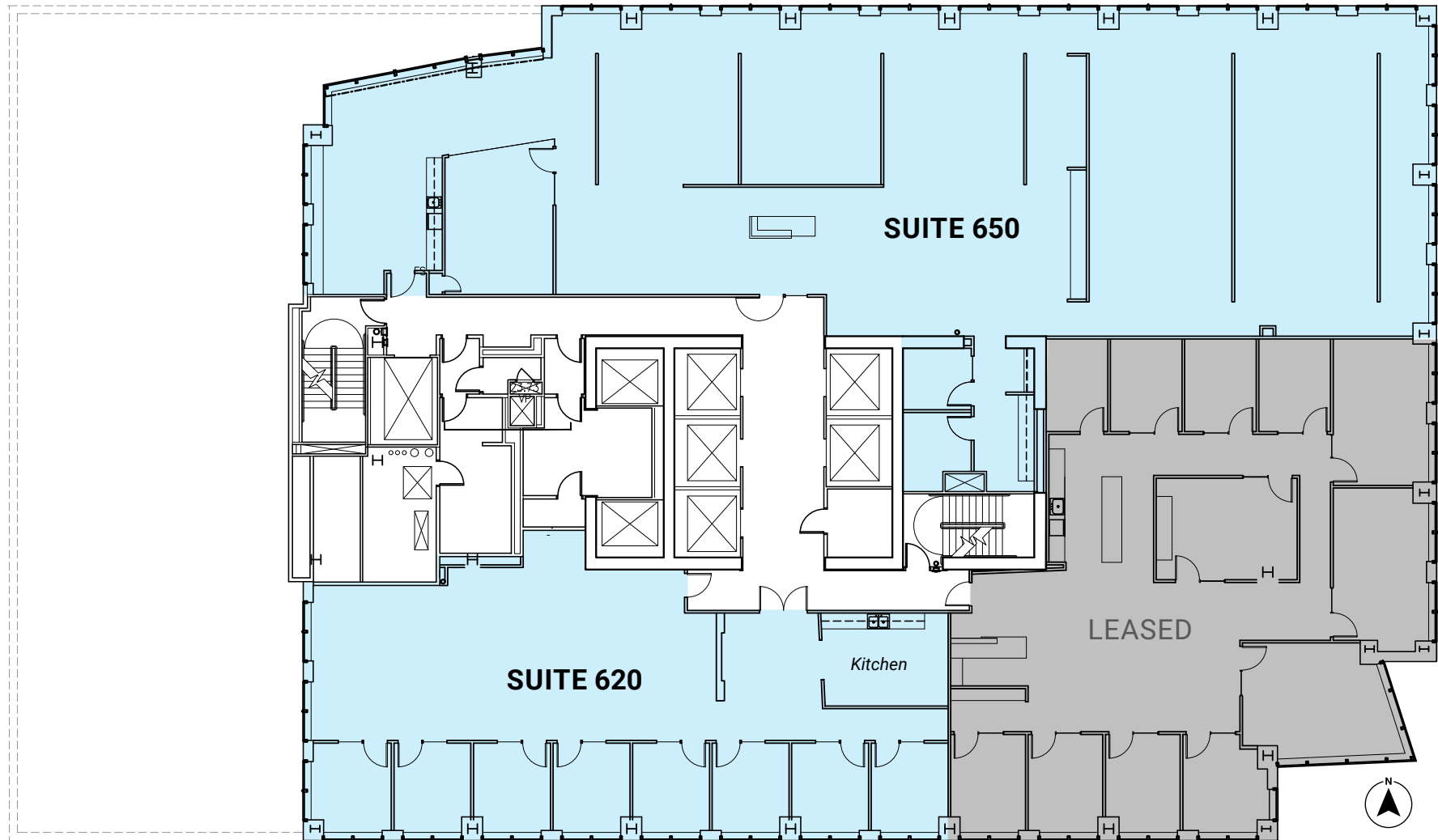


Floor 6 | Suites 650 + 620 | 10,533 RSF

- **Suite 650** | 7,177 RSF | Available Now
- **Suite 620** | 3,356 RSF | Available Now
- New lobby



Water Views



City Views

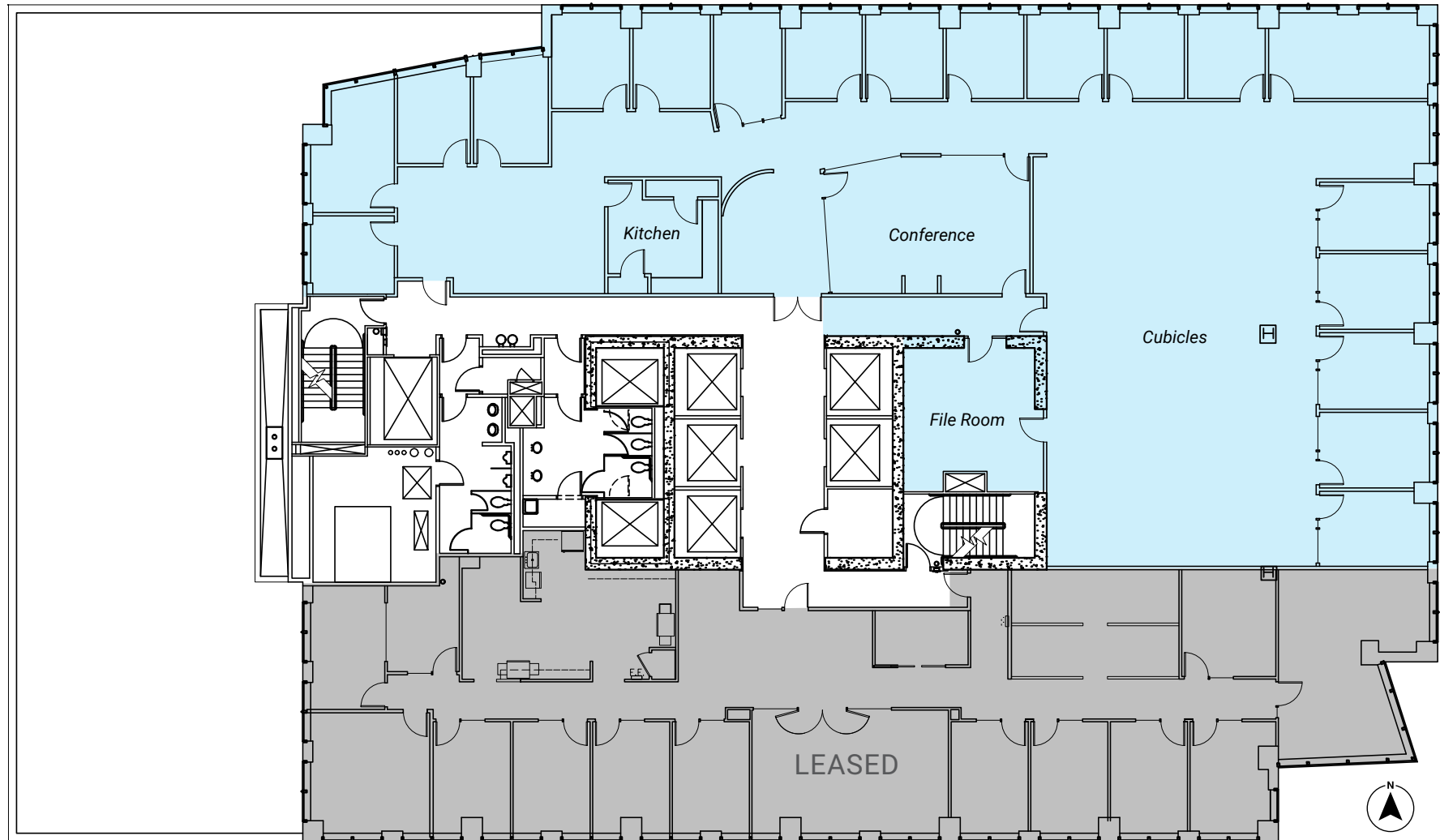
Floor 5 | Suite 501 | 8,995 RSF

Available Now



- New lobby

Water Views

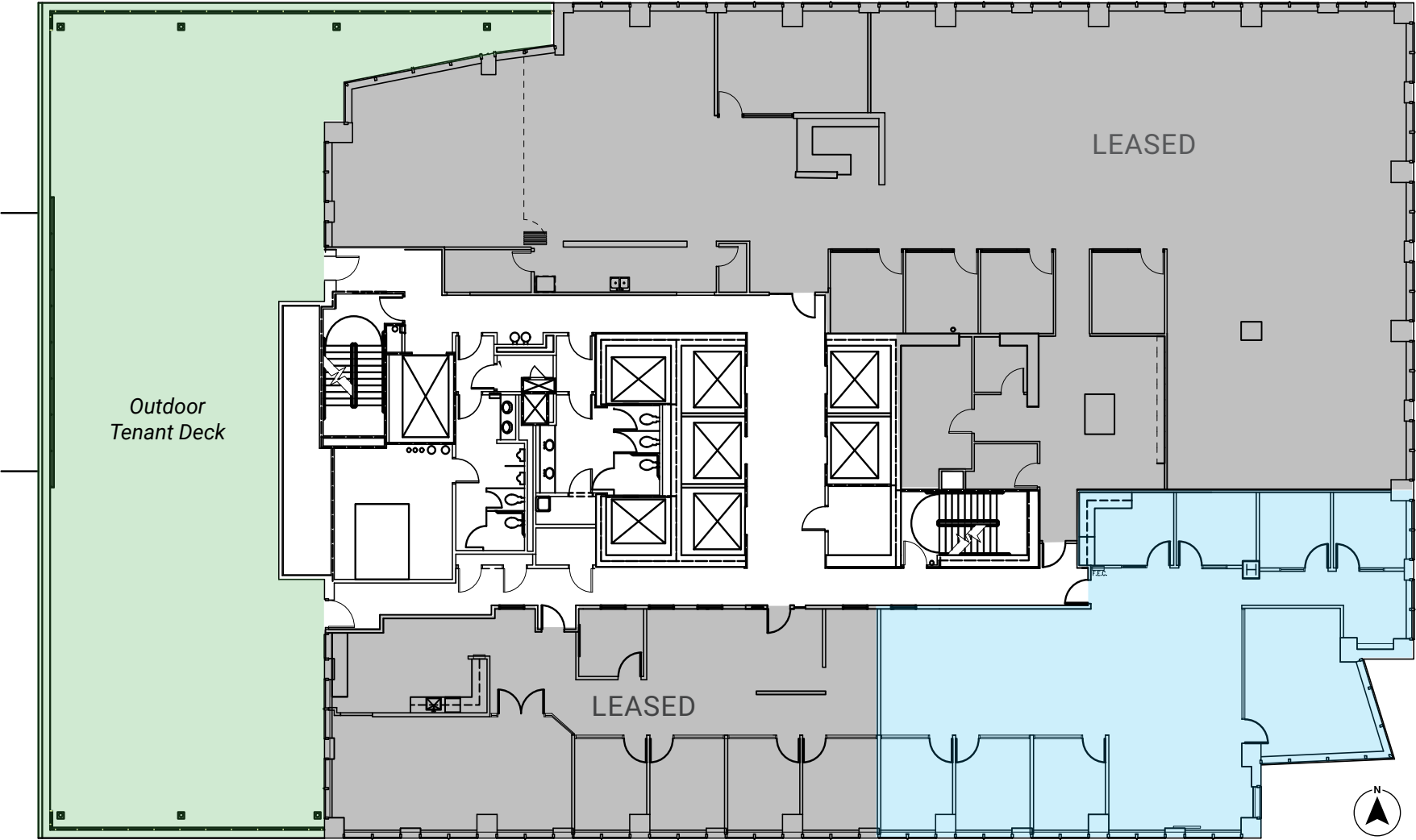


City Views

Floor 4 | Suite 430 | 3,060 RSF

Available Now

Water Views



City Views

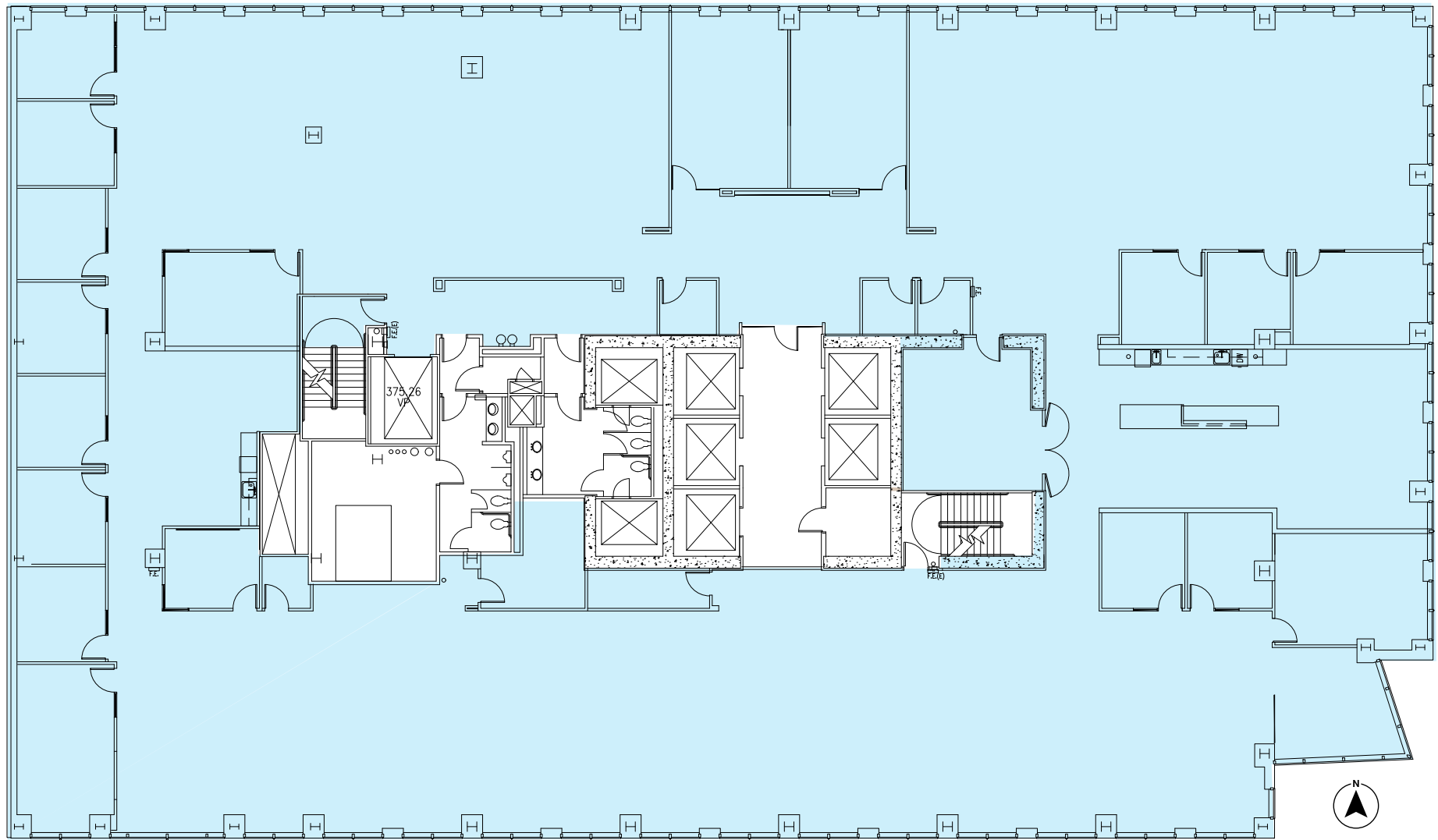
Floor 3 | Suite 300 | 19,125 RSF

Available Now



- Full floor
- Open ceiling, tech build-out

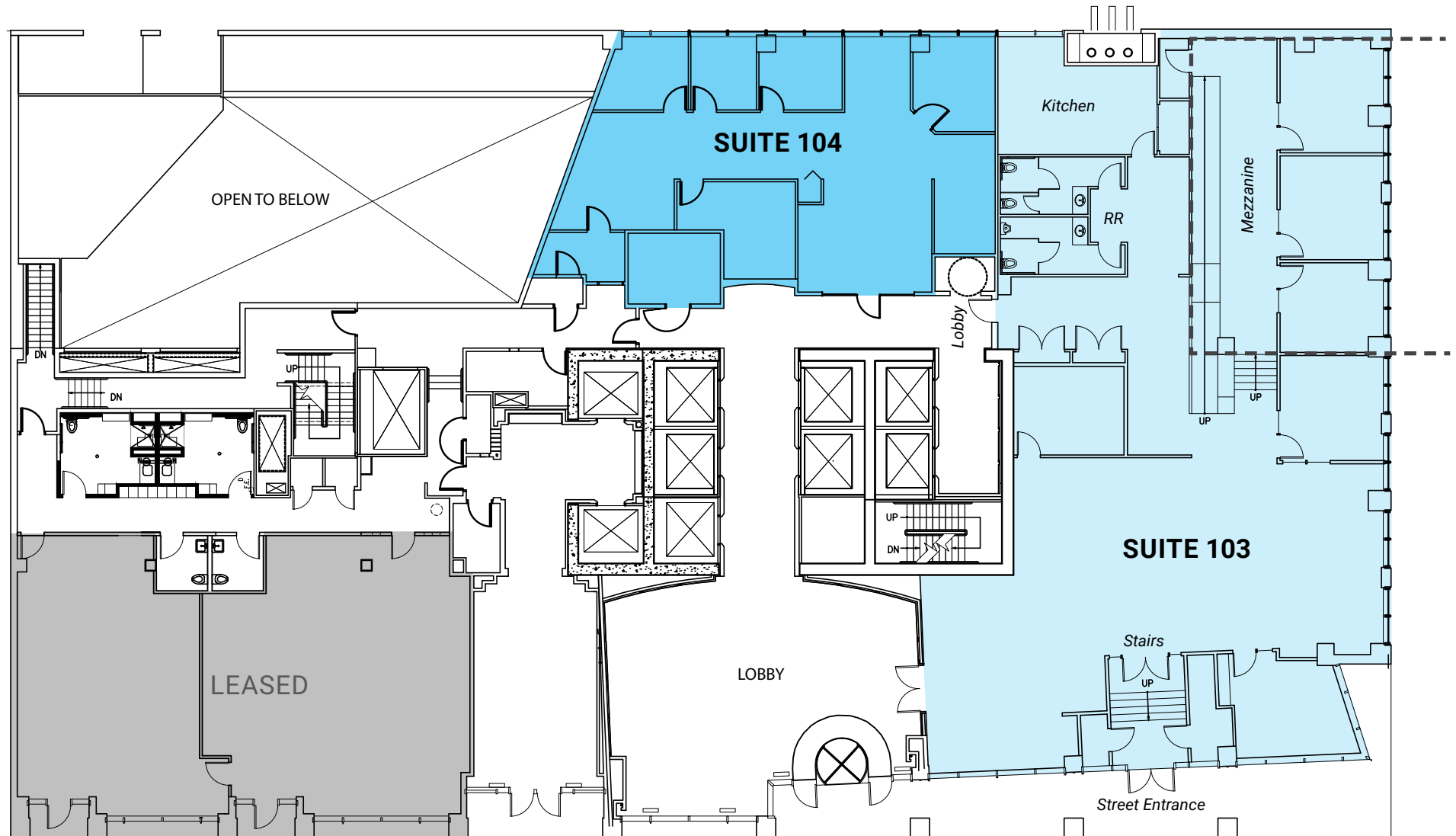
Water Views



City Views

Floor 1 | Suites 103 + 104

- **Suite 103** | 5,469 RSF | Available Now
- **Suite 104** | 1,997 RSF | Available Now
- Street-level office, retail or bank spaces





MILLENNIUM TOWER

719 2ND AVE | SEATTLE, WA

NEWMARK

nuveen
REAL ESTATE

JESSE OTTELE
206.452.4529
jesse.ottele@nmrk.com

CAVAN O'KEEFE
206.395.2903
cavan.okeefe@nmrk.com

The distributor of this communication is performing acts for which a real estate license is required. The information contained herein has been obtained from sources deemed reliable but has not been verified and no guarantee, warranty or representation, either express or implied, is made with respect to such information. Terms of sale or lease and availability are subject to change or withdrawal without notice. 18-1023_7/19