

# 500 E

STREET, SW



# Prime Vacancy In The Heart Of Federal Center

9th Floor	28,163 RSF	Full Floor Available NOW
8th Floor	28,163 RSF	Full Floor Available NOW





Expansive Rooftop Terrace  
with Gazebo, U.S. Capitol &  
DC Skyline Views



## Highlights

---

- Prime Location in the heart of the Federal Government's SW Campus
- Minutes from the U.S. Capitol
- Freestanding building with panoramic views
- Expansive rooftop terrace
- Efficient Floor plates allow for seamless division
- Walking distance to Federal Center Metro Station
- Neighbors DC's latest attraction, The Wharf

# THE NEIGHBORHOOD

## Restaurants + Bars

- District Wharf
- Five Guys
- Au Bon Pain
- Subway
- Starbucks (3)
- Cafe 59
- Rise n' Shine
- Moe's Southwest Grill
- Rice Bar
- Vie de France
- Potbelly
- Amsterdam Falafel Shop
- Casey's Coffee
- Pizza Autentica

## Retail + Convenience

- CVS (2)
- FedEx Office Print and Ship
- Wells Fargo Bank
- Gold's Gym

## Hotels

- Hyatt Place Washington DC/National Mall
- Residence Inn by Marriott

## Museums, Venues & Attractions

- The Anthem
- International Spy Museum
- Museum on Main Street
- Air and Space Museum
- Hirshhorn Museum
- National Museum of the American Indian
- Museums of African Art
- United States Botanic Garden

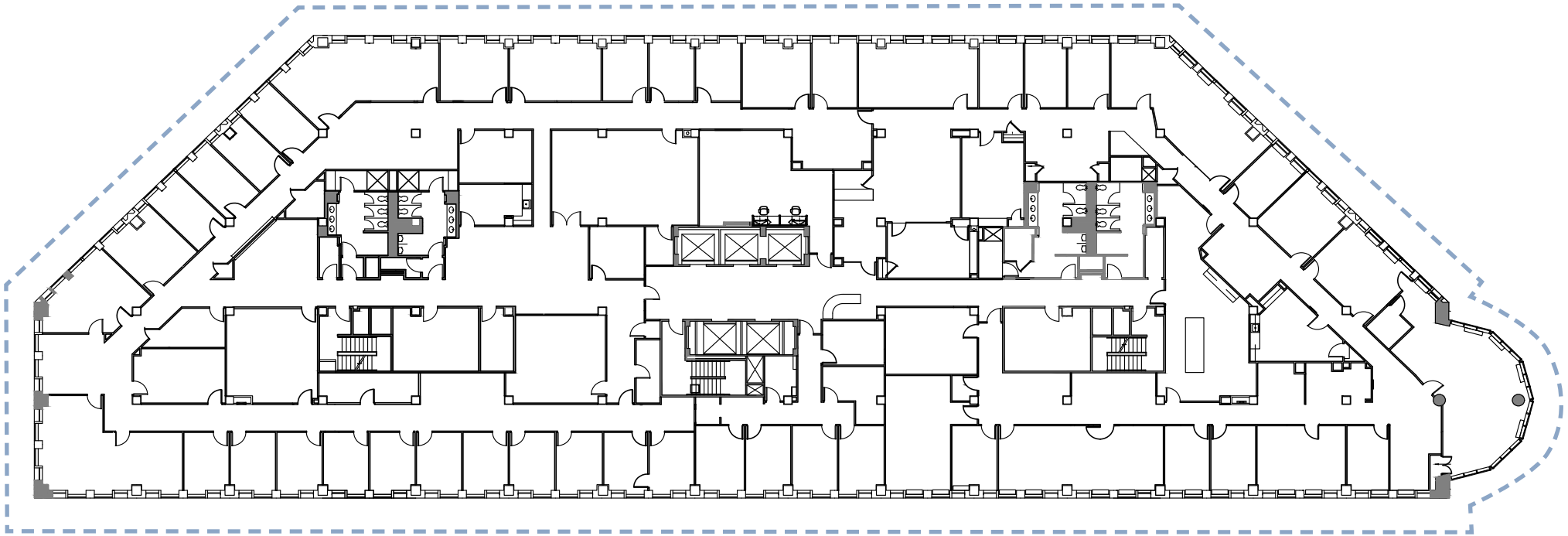


8TH FLOOR | 28,163 RSF

AVAILABLE NOW

500 E

STREET, SW



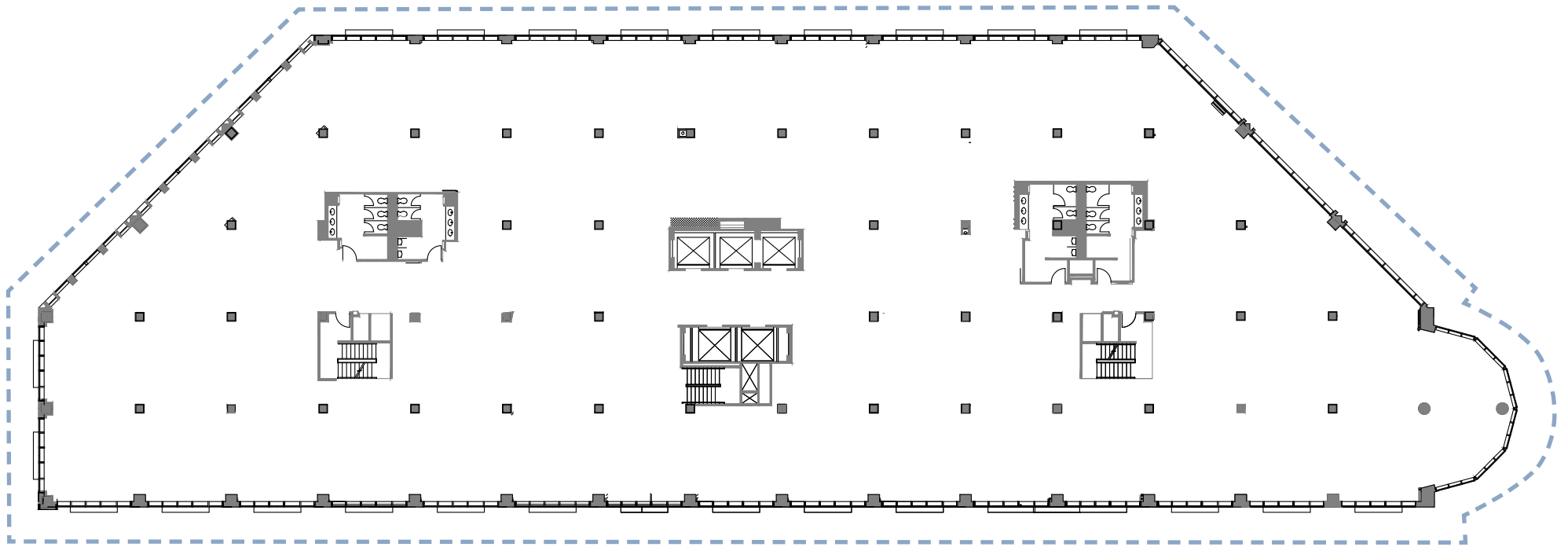
-----  
WINDOW LINE

9TH FLOOR | 28,163 RSF

AVAILABLE NOW

# 500 E

STREET, SW



---  
WINDOW LINE

## For Leasing Information Contact:

**Jonathan Wellborn**

202.644.8552

[jonathan.wellborn@avisonyoung.com](mailto:jonathan.wellborn@avisonyoung.com)

**Will Stern**

202.644.8553

[will.stern@avisonyoung.com](mailto:will.stern@avisonyoung.com)

**Alston Offutt**

202.644.8554

[alston.offutt@avisonyoung.com](mailto:alston.offutt@avisonyoung.com)

**David Alperstein**

703.537.7654

[dalperstein@fdstonewater.com](mailto:dalperstein@fdstonewater.com)

**Tim Lenahan**

703.537.7650

[tlenahan@fdstonewater.com](mailto:tlenahan@fdstonewater.com)