

# Retail Space For Lease

644 Menlo Avenue

Menlo Park, CA



## ±1,720 Square Feet Available

As exclusive agent(s), we are pleased to offer the following space:



- ◆ **Entire Ground Floor: ±1,720 SF**
- ◆ **Rental Rate: \$5.95 Full Service**
- ◆ **Downtown Menlo Park**
- ◆ **Great Windowline**
- ◆ **2 Dedicated Parking Spaces with Public Parking in Rear of Building**

**Josh Shumsky** 408.982.8490 [jshumsky@ngkf.com](mailto:jshumsky@ngkf.com) CA RE License #01883266

**Bryte Bellotti** 650.473.4767 [bellotti@ngkf.com](mailto:bellotti@ngkf.com) CA RE License #01944321



245 Lytton Avenue, Suite 150, Palo Alto, CA 94301

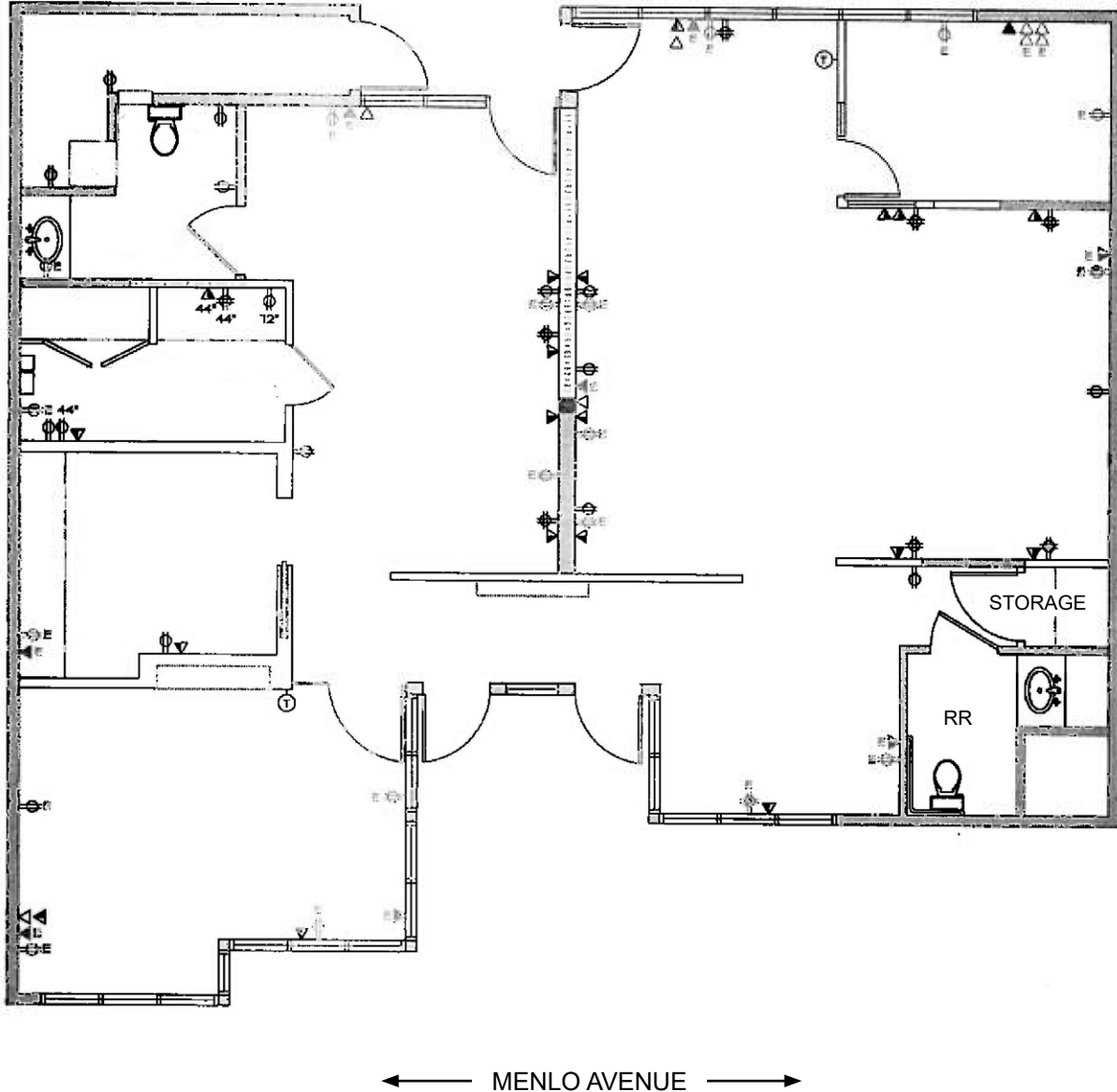
[www.ngkf.com/retail](http://www.ngkf.com/retail)

The distributor of this communication is performing acts for which a real estate license is required. The information contained herein has been obtained from sources deemed reliable but has not been verified and no guarantee, warranty or representation, either express or implied, is made with respect to such information. Terms of sale or lease and availability are subject to change or withdrawal without notice.

# Retail Space For Lease

644 Menlo Avenue

Menlo Park, CA



**Josh Shumsky** 408.982.8490 [jshumsky@ngkf.com](mailto:jshumsky@ngkf.com) CA RE License #01883266

**Bryte Bellotti** 650.473.4767 [bbellotti@ngkf.com](mailto:bbellotti@ngkf.com) CA RE License #01944321



245 Lytton Avenue, Suite 150, Palo Alto, CA 94301

[www.ngkf.com/retail](http://www.ngkf.com/retail)

The distributor of this communication is performing acts for which a real estate license is required. The information contained herein has been obtained from sources deemed reliable but has not been verified and no guarantee, warranty or representation, either express or implied, is made with respect to such information. Terms of sale or lease and availability are subject to change or withdrawal without notice.