

PORT CHARLOTTE COMMONS | Port Charlotte, Florida

SIZE

13 acres

LOCATION

Northwest quadrant of Veterans Blvd. and Cochran Blvd. in Port Charlotte Charlotte County, Florida.

TRAFFIC COUNTS

Veterans Blvd. - 20,000
Cochran Blvd. - 15,000

KEY DEMOGRAPHICS 3-MILE RADIUS

POPULATION

Current Estimated Population 38,648
2024 Projected Population 43,132
2010 Census Population 35,349

INCOME

Average Household Income \$58,787

MEDIAN AGE 48 years

HOUSEHOLDS

Current Estimated Households 16,368
2024 Projected Households 17,247
2010 Census Households 15,009

DAYTIME DEMOS

Number of Businesses 1,959
Number of Employees 17,467



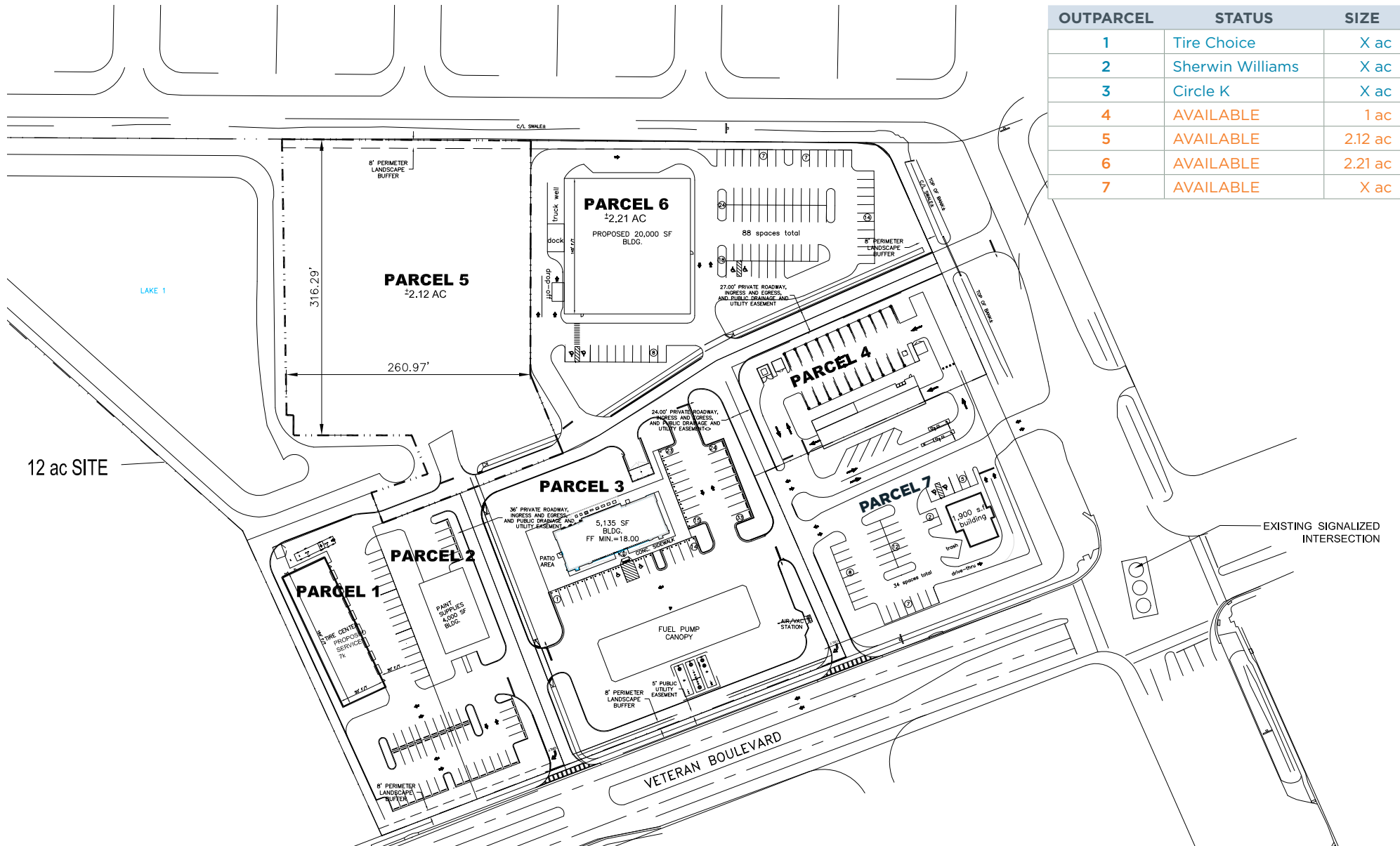
CASTO

Inspired ideas.
Integrated real estate solutions.

www.castoinfo.com | 5391 Lakewood Ranch Blvd., Suite 100 | Sarasota, FL | 941.552.2700

LEASING REPRESENTATIVE
Massimo Rastrelli
941.552.4336 OFFICE
mrastrelli@castoinfo.com

PORT CHARLOTTE COMMONS | Port Charlotte, Florida



OUTPARCEL	STATUS	SIZE
1	Tire Choice	X ac
2	Sherwin Williams	X ac
3	Circle K	X ac
4	AVAILABLE	1 ac
5	AVAILABLE	2.12 ac
6	AVAILABLE	2.21 ac
7	AVAILABLE	X ac