



265 Downtown

For Lease | 265 East 100 South | Salt Lake City, Utah

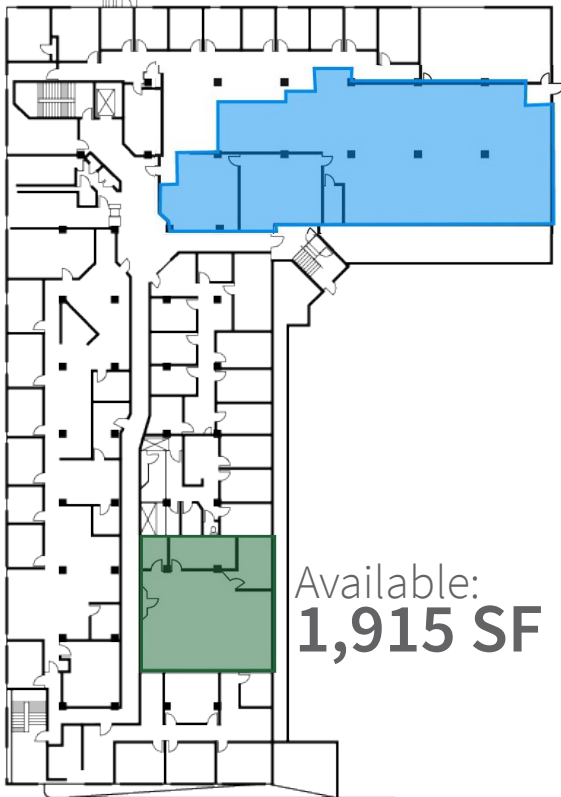


HIGHLIGHTS

- + Lease rate: **\$19.50/SF full service**
- + Major exterior and interior building **renovations complete**
- + **Free onsite parking** 2.25/1,000
- + Numerous City Creek amenities within walking distance
- + **3 blocks from Library Station UTA Trax**



2ND FLOOR



Available:
4,568 SF

Available:
1,915 SF

3RD FLOOR



Available:
21,793 SF
March 1, 2022

LOCATION MAP



Hotels

1. Radisson
2. Marriott Downtown
3. Carlton
4. Kimpton Hotel
5. Holiday Inn Express
6. Hilton
7. Peery Hotel
8. Fairfield Inn & Suites
9. Courtyard
10. Sheraton
11. Marriott City Center

Restaurants & Nightlife

1. Blue Lemon
2. Ebar
3. Starbucks

4. Texas de Brazil
5. Big Barbecue
6. Subway
7. Farr's Fresh Café
8. Kneaders Bakery & Café
9. Pizza Studio City Creek
10. Sbarro
11. Chick-fil-A
12. McDonald's
13. Roxberry
14. Johnny Rockets
15. The Cheesecake Factory
16. BRIO Tuscan Grille
17. Café Molise
18. BTG Wine Bar
19. Naked Fish Japanese Bistro
20. Beer Hive Pub
21. Michelangelo's On Main
22. Max
23. Blue Iguana
24. Benihana
25. Murphy's Bar & Grill
26. Gandolfo's New York Deli
27. Siegfried's Delicatessen
28. Martine Café
29. Encore Bistro
30. Eva's Bakery
31. Mollie & Ollie
32. Three Pines Coffee
33. Lamb's Grill
34. Bourbon House
35. XpressO
36. Carl's Jr
37. Cancun Café
38. Bar-X
39. Beer Bar
40. Johnny's On Second
41. Red Rock Brewing Co
42. J. Wong's Asian Bistro
43. Christopher's Seafood

44. Lumpy's Downtown
45. P.F. Chang's
46. Olive Garden
47. The Red Door
48. Bambara-SLC
49. Spencer's Steaks & Chops
50. Pier 49 Pizza
51. Ruth's Chris Steak House
52. Lunsford Deli
53. Pleiku
54. Spitz Downtown
55. From Scratch
56. Alamexo
57. Toaster's
58. Cedar of Lebanon
59. Este Pizzeria
60. The Copper Onion
61. The Big O Doughnuts
62. Tabernacle Social Club
63. Valter's Osteria
64. Squatters Pub
65. Gracie's
66. Simply Sushi
67. Moose Lounge
68. Sicilia Pizza & Kitchen
69. Market Street Grill
70. Takashi
71. Roula's Cafe
72. Cheers to You
73. Jimmy Johns
74. Eva
75. Rich's Burgers 'n Grub
76. Whiskey Street
77. Maxwell's East Coast Eatery
78. Twist
79. The Green Pig Pub
80. Pie Hole
81. Himalayan Kitchen
82. Jackalope Lounge
83. Wingers Roadhouse Grill



Trax



Parking



265 East 100 South

PARKING & TRANSIT



MAP LEGEND

- Parking
- Bus Routes
- Trax Blue Line
- Trax Green Line
- Trax Red Line
- Trax Stops

AVAILABLE PARKING

1. Eagle Gate Terrace

Parking available at \$90.00 (P6-P10) or \$102.00 (P1-P6) non-reserved.

2. Social Hall Plaza

Parking available at \$120/mo. unreserved.

3. Orpheum Office Plaza Parking

Parking available at \$109.00 non-reserved.

4. Regent Parking

Parking available at \$105.00 (P6-P10) or \$120.00 (P1-P6) non-reserved.
\$140-\$160 reserved.

5. Convenience Parking (Corner of 4th and Main)

Up to 150 parking stalls can be made available on an MTM basis for \$62/mo. per stall, unreserved.

CONTACT

For leasing information, please contact:

Jim Balderson

+1 801 456 9519

jim.balderson@am.jll.com

Jami Marsh

+1 801 456 9514

jami.marsh@am.jll.com

Jillian Johnson

+1 801 456 9517

jillian.johnson@am.jll.com

