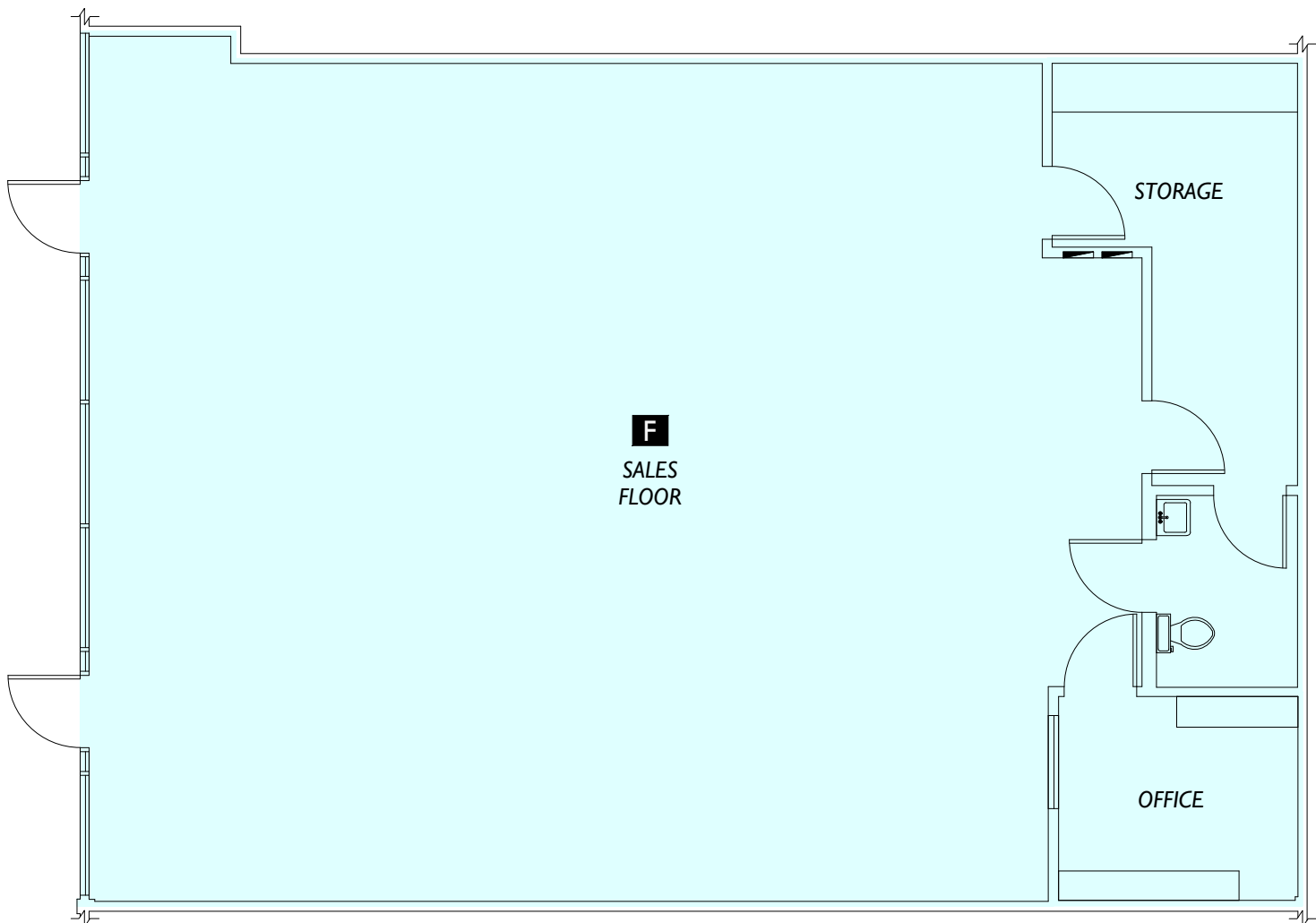


Adjacent Tenant



Parking

F
SALES
FLOOR

STORAGE

OFFICE

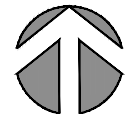
ASSUMED WALL THICKNESS (TYP)

Adjacent Tenant

Suite #	Occupant Area
Suite F	1,782

Area Analysis performed in accordance with ANSI/BOMA Z65.5 - 2010 Standard.

Adjacent Tenant



Tiegs Property Services, LLC P.O. Box 2214 Tacoma, WA 98401	Retail Space 700-720 Sleater Kinney Road SE Lacey, WA 98503	Lease Plan	0 10 ----- Scale		2DFLOORPLANS.COM 425-677-7511
		F			600 NW Gilman Blvd. Suite E Issaquah, WA 98027
Client	Subject	Suite	Scale	Measured: May 2018	Project: C18-475