

# HIGHLAND PARK

7777 – 7821 W MORRIS STREET – INDIANAPOLIS, IN

FOR LEASE



## PROPERTY OVERVIEW

- Freestanding buildings for lease
- 2 10' x 10' drive-in doors per building
- 12' clear height
- Zoned I-4-S
- Close to Indianapolis International Airport & many area amenities
- Various building layouts available
- Potential for outside storage
- Available frontage on West Morris Street
- 2.5 miles / less than 5 minutes from I-465

### CONTACT:

RYAN KELLY  
317.713.2118

rkelly@SummitRealtyGroup.com



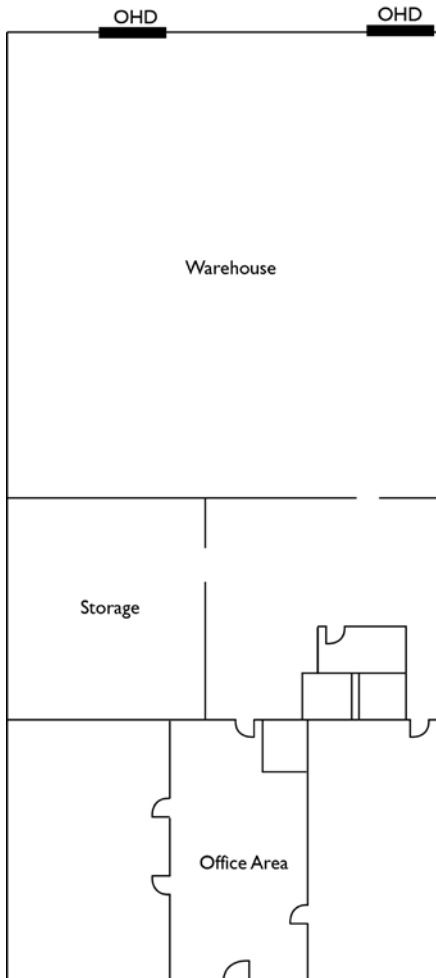
**SUMMIT**  
INDEPENDENTLY OWNED AND OPERATED  
www.SummitRealtyGroup.com

# HIGHLAND PARK



## 7809 W MORRIS

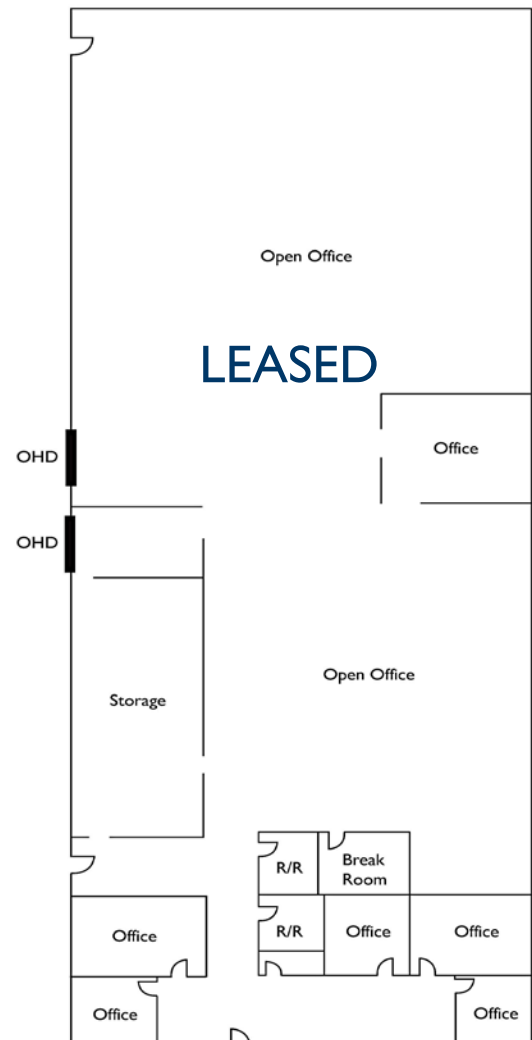
- 5,300 SF total
- 2,500 SF office
- Two 10' x 10' overhead doors
- Frontage on West Morris Street



Leased

## 7811 W MORRIS

- 6,656 SF total
- 100% office
- Mix of private offices & open space
- 100% air conditioned
- Two 10' x 10' overhead doors
- Frontage on West Morris Street
- 2/3 of space can be converted into warehouse



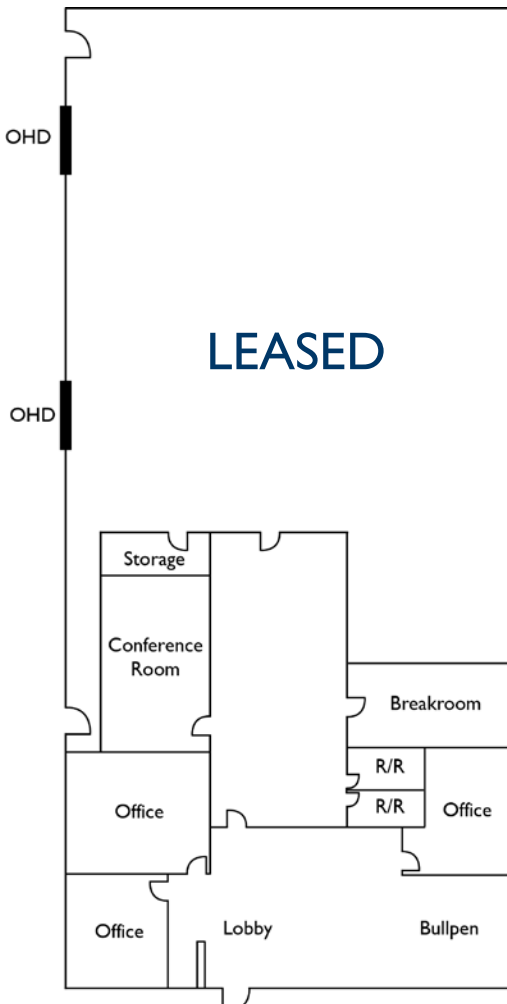
\* Drawings are not to scale



Leased

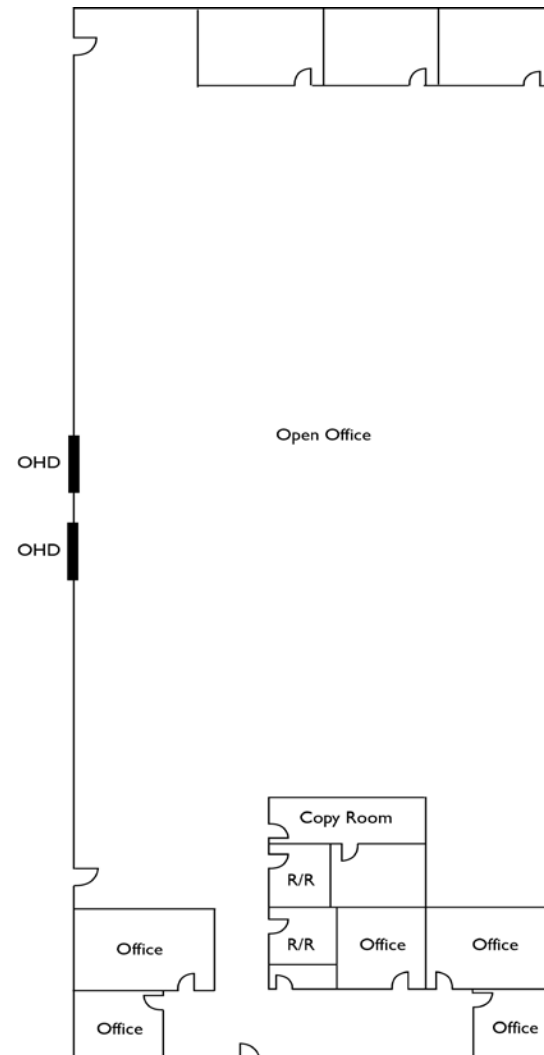
### 7787 W MORRIS

- 5,300 SF total
- 1,764 SF office space
- Two 10' x 10' overhead doors
- Existing fenced outside storage area (expandable)
- Air conditioned shop area
- Available December 1, 2014



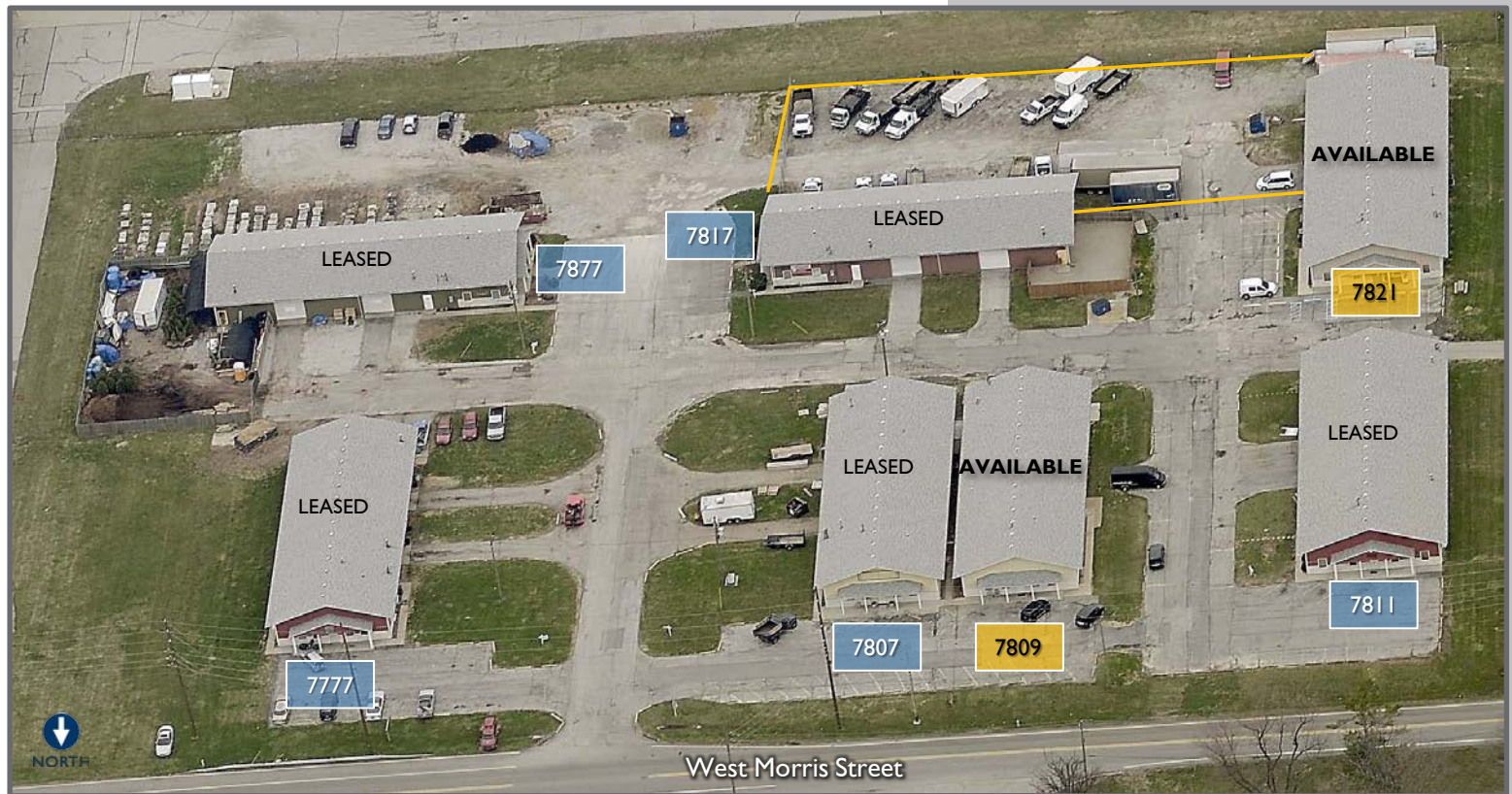
### 7821 W MORRIS

- 6,656 SF total
- 100% office space
- Two 10' x 10' overhead doors
- Air conditioned
- Easily converted into warehouse space
- Fenced outside storage available





# HIGHLAND PARK



## CONTACT:

**RYAN KELLY**

317.713.2118

[rkelly@SummitRealtyGroup.com](mailto:rkelly@SummitRealtyGroup.com)



**CUSHMAN & WAKEFIELD**

**SUMMIT**  
INDEPENDENTLY OWNED AND OPERATED

[www.SummitRealtyGroup.com](http://www.SummitRealtyGroup.com)

No warranty or representation, express or implied, is made as to the accuracy of the information contained herein, and same is submitted subject to errors omissions, change of price or other conditions, withdrawal without notice and to any specific listing conditions, imposed by our principals.