

The Park at Chandler BUSINESS CENTER

1311 & 1349 WEST CHANDLER BOULEVARD
CHANDLER • ARIZONA



Office Space for Lease

Unique opportunity in the heart of Chandler



Contact:

Mark F. Gustin, SIOR, CCIM
Managing Director
+1 602 282 6316
mark.gustin@am.jll.com

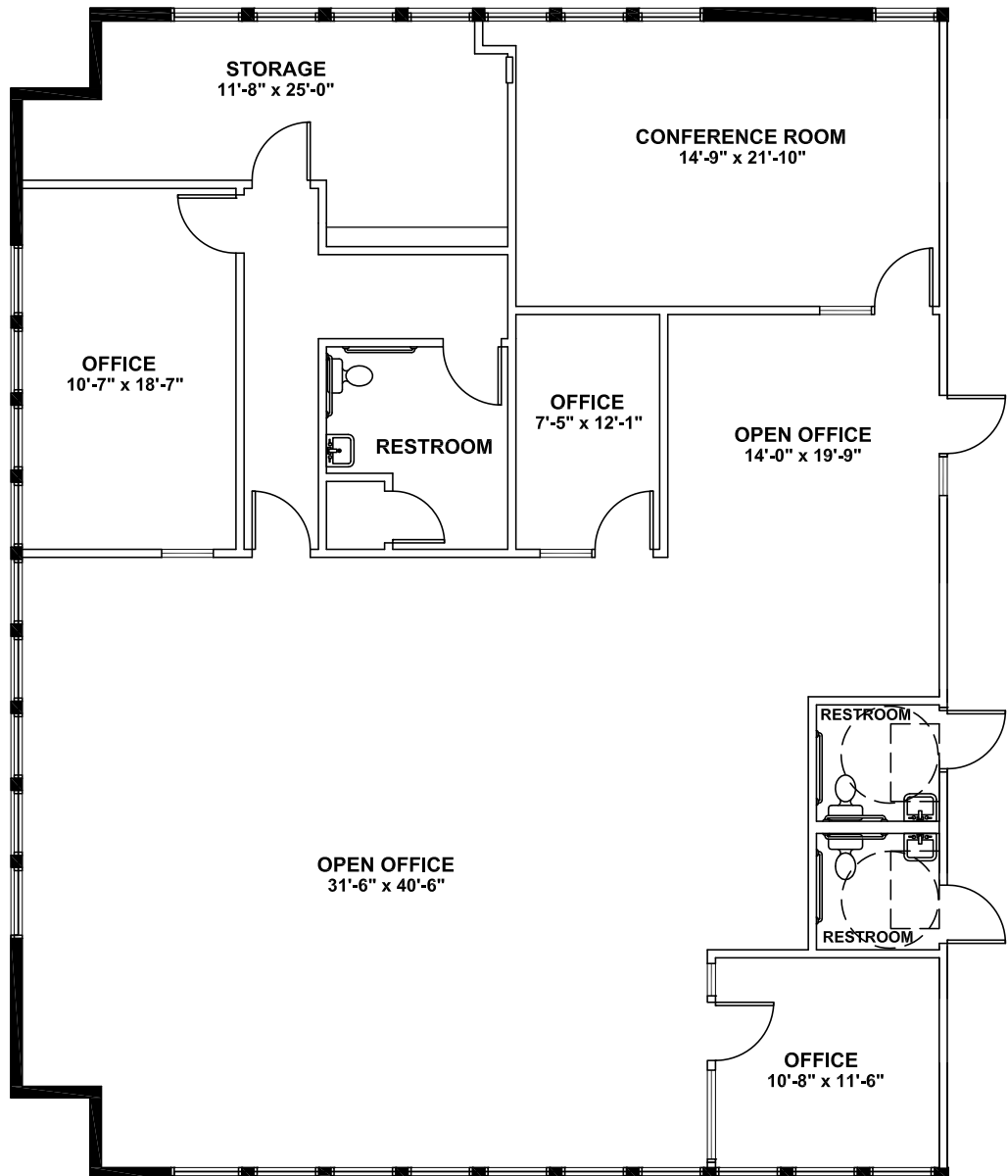
The Park at Chandler

BUSINESS CENTER

1349 BUILDING
CHANDLER, ARIZONA



Suite 200B
±3,016 r.s.f.



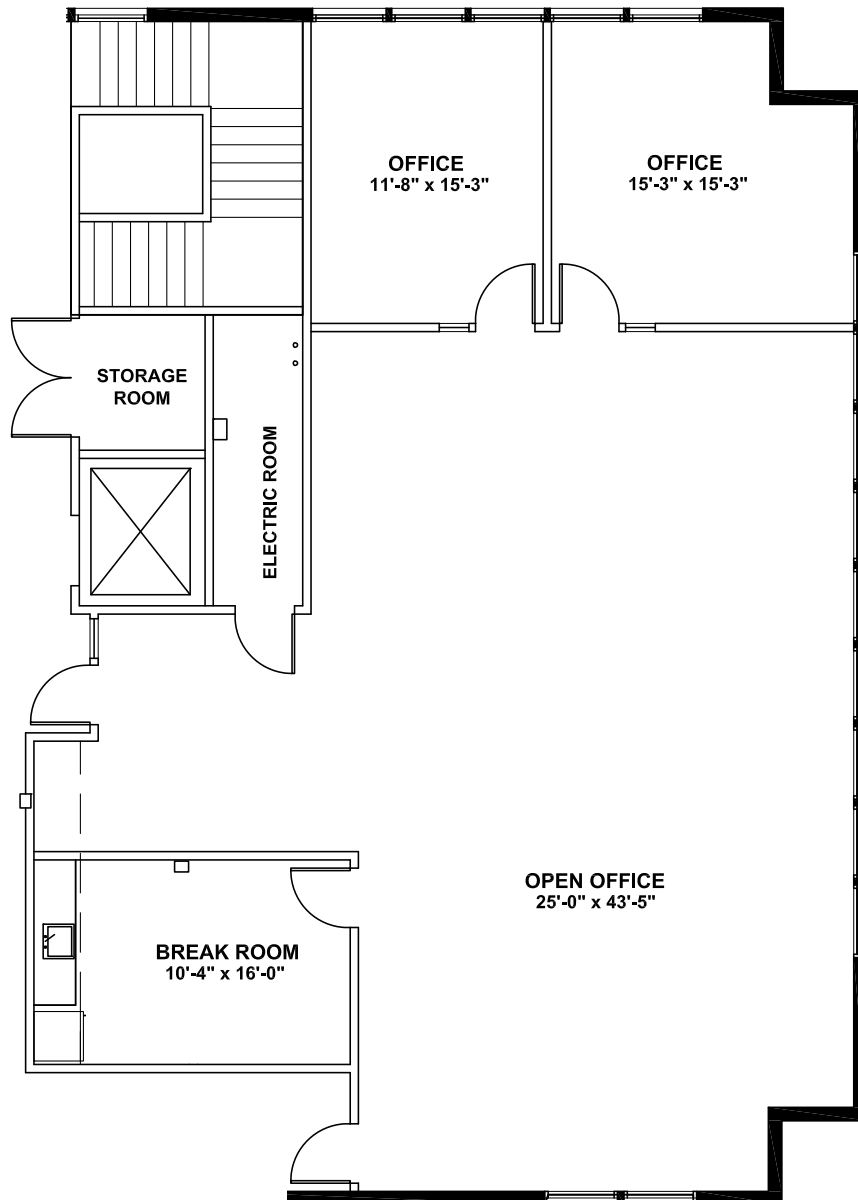
The Park at Chandler

BUSINESS CENTER

1349 BUILDING
CHANDLER, ARIZONA



Suite 230B
±2,162 r.s.f.
Spec Suite

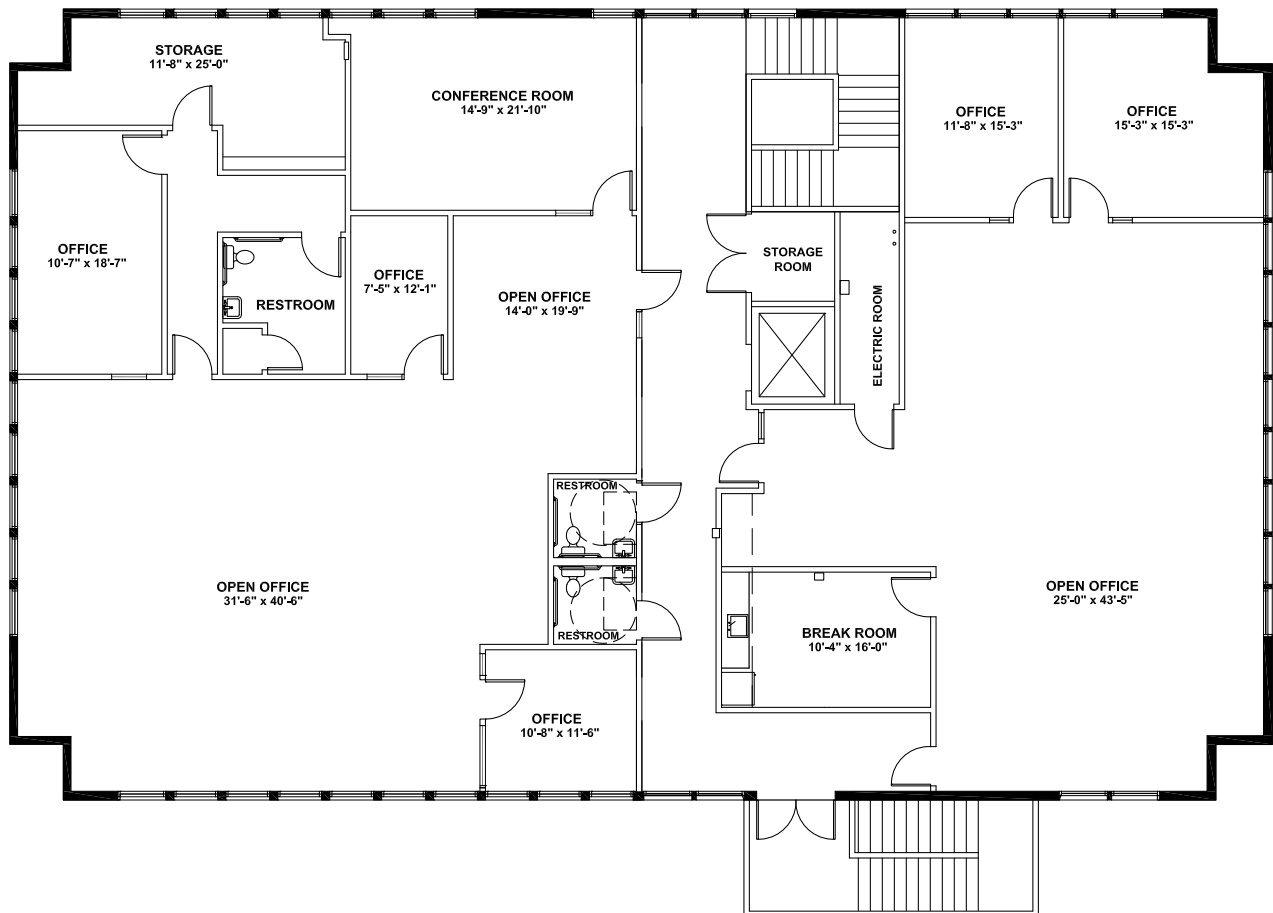


The Park at Chandler BUSINESS CENTER

1349 BUILDING
CHANDLER, ARIZONA



Entire 2nd Floor - ±5,622 r.s.f.



The Park at Chandler

BUSINESS CENTER

Features

- ±35,518 sf office project
- \$19.00 psf, full service
- 5/1,000 parking; covered reserved spaces available
- Two-story office complex with interior lobbies
- Visibility on Chandler Boulevard
- Building signage for full floor lease
- Park-like setting with circular entry drive and fountain plaza area
- Featuring Southwestern architecture accented with mission tile roofs
- Adjacent to The Park at Chandler Business Center is The Park at Chandler Shopping Center which includes: Home Depot, Safeway, Jiffy Lube, Arco AM/PM, Wendy's, Sherwin-Williams Paints, Krispy Kreme Doughnuts, Starbucks, Great Clips, LasikPlus and Bank of America



1311 & 1349 WEST CHANDLER BOULEVARD
CHANDLER • ARIZONA



Mark F. Gustin, SIOR, CCIM
Managing Director
+1 602 282 6316
mark.gustin@am.jll.com



The Park at Chandler BUSINESS CENTER

1311 & 1349 WEST CHANDLER BOULEVARD

CHANDLER, AZ



Contact:

Mark F. Gustin, SIOR, CCIM
 Managing Director
 +1 602 282 6316
 mark.gustin@am.jll.com

