

# 1015 CINDY LN. CARPINTERIA, CA 93013

**RATE REDUCTION**

**\$0.92/SF NNN (\$0.23)**

**NOW AVAILABLE!**

±9,626 SF Industrial/Warehouse  
Located In The Carpinteria Business  
Park. Up to 20' Ceilings & A 10' x 10'  
Ground Level Roll-Up Door.

**Bob Tuler**

805.879.9605

[btuler@radiusgroup.com](mailto:btuler@radiusgroup.com)

CA Lic. 00643325

**Paul Gamberdella**

805.879.9622

[pgamberdella@radiusgroup.com](mailto:pgamberdella@radiusgroup.com)

CA Lic. 01267748

**Gene Deering**

805.879.9623

[gdeering@radiusgroup.com](mailto:gdeering@radiusgroup.com)

CA Lic. 01450943



# 1015 CINDY LN. | CARPINTERIA, CA 93013

For Lease | ±9,626 SF Industrial/Warehouse

**Price Reduction!**



## PROPERTY OVERVIEW

Industrial/Warehouse space located in the Carpinteria Industrial Park with high ceilings, concrete tilt construction, and approx. 2,285 SF of Office Space. Proximity to Highway 101 and one street level roll-up loading door (10' x 10') gives easy access for large truck loading.

## Offering Specifics

Lease Rate	\$0.92/SF NNN (\$0.23)
Space Sizes	Ind/R&D/Warehouse Size: Approx. 7,341 SF Office Size: Approx. 2,285 SF Total Size: Approx. 9,626 SF
Roll-Up Door	One (1) 10' x 10' Ground Level
Ceiling Height	Approx. 20 ft. (Warehouse)
Parking	Approx. 10 Spaces
Restrooms	Two (2)
HVAC	In Office Only
Power	400 Amps 208-120 Volts 3-Phase
Zoning	M-RP
Available	03/01/2020
CSO	3%
To Show	Contact Listing Agents

**Bob Tuler**

805.879.9605

[btuler@radiusgroup.com](mailto:btuler@radiusgroup.com)

CA Lic. 00643325

**Paul Gamberdella**

805.879.9622

[pgamberdella@radiusgroup.com](mailto:pgamberdella@radiusgroup.com)

CA Lic. 01267748

**Gene Deering**

805.879.9623

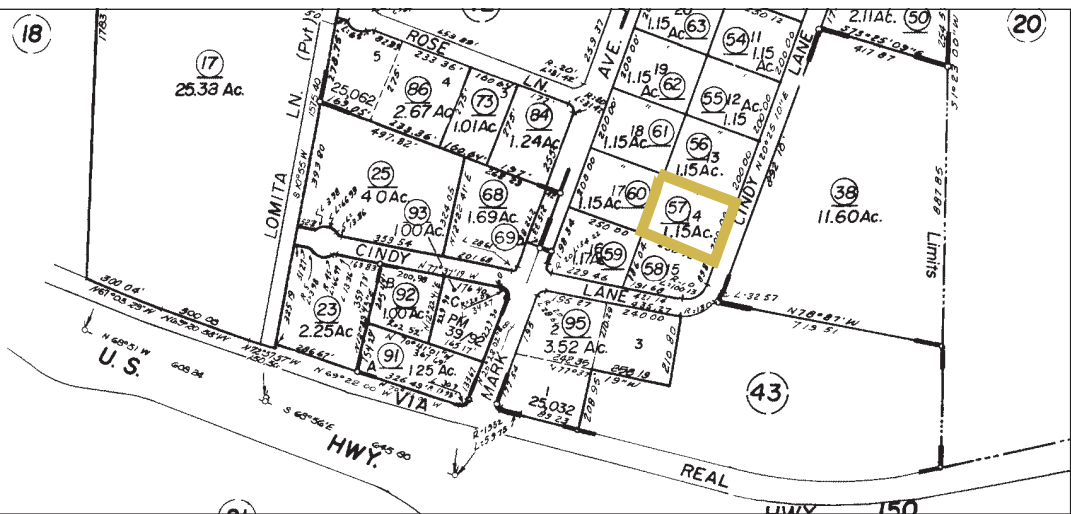
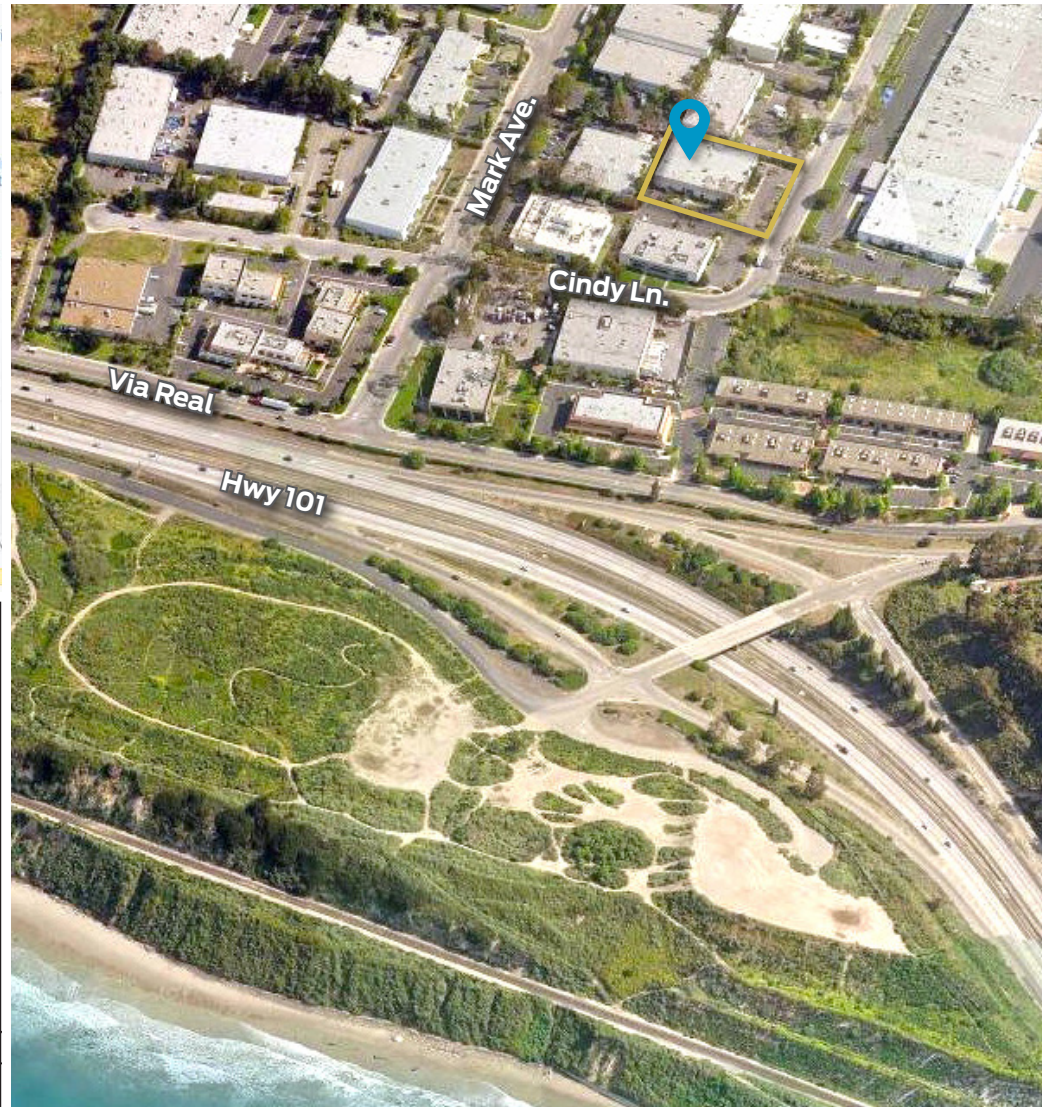
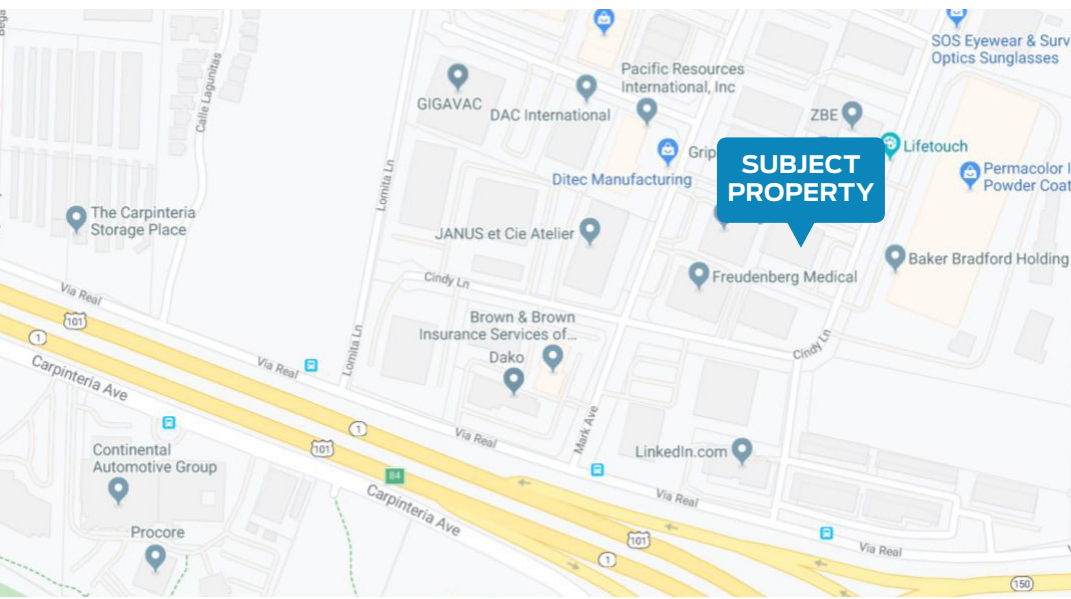
[gdeering@radiusgroup.com](mailto:gdeering@radiusgroup.com)

CA Lic. 01450943



# 1015 CINDY LN. | CARPINTERIA, CA 93013

For Lease | ±9,626 SF Industrial/Warehouse



**Bob Tuler**

805.879.9605

[btuler@radiusgroup.com](mailto:btuler@radiusgroup.com)

CA Lic. 00643325

**Paul Gamberdella**

805.879.9622

[pgamberdella@radiusgroup.com](mailto:pgamberdella@radiusgroup.com)

CA Lic. 01267748

**Gene Deering**

805.879.9623

[gdeering@radiusgroup.com](mailto:gdeering@radiusgroup.com)

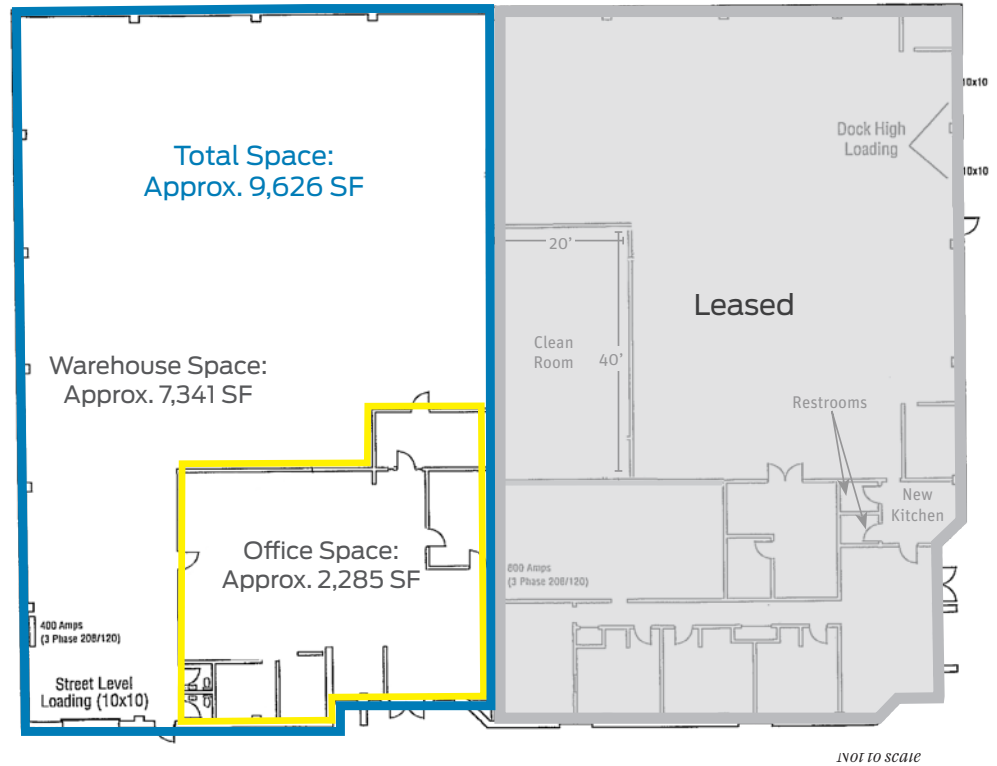
CA Lic. 01450943



# 1015 CINDY LN. | CARPINTERIA, CA 93013

For Lease | ±9,626 SF Industrial/Warehouse

## FLOOR PLAN



**Bob Tuler**  
805.879.9605  
[btuler@radiusgroup.com](mailto:btuler@radiusgroup.com)  
CA Lic. 00643325

**Paul Gamberdella**  
805.879.9622  
[pgamberdella@radiusgroup.com](mailto:pgamberdella@radiusgroup.com)  
CA Lic. 01267748

**Gene Deering**  
805.879.9623  
[gdeering@radiusgroup.com](mailto:gdeering@radiusgroup.com)  
CA Lic. 01450943

