

Wrightsboro Road Pad Site

Wrightsboro Road, Augusta, GA 30909

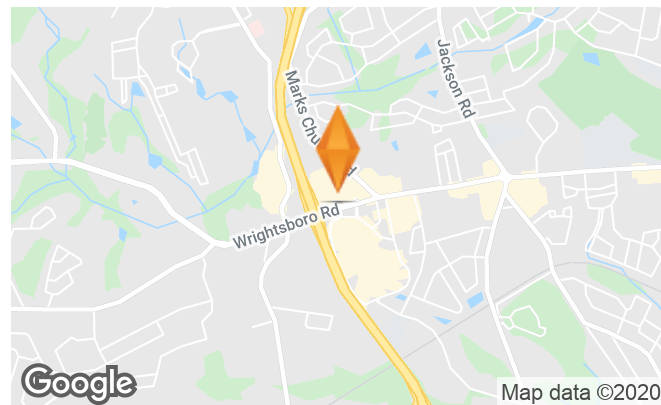
FOR LEASE



1.34 ACRES / 10,000 SF AVAILABLE

PROPERTY HIGHLIGHTS

- Build-to-suit or Ground Lease opportunity directly at the intersection of Wrightsboro Road and I-520.
- Terrific visibility and exposure to traffic counts of 29,000 VPD.
- Well located along Augusta's dominant retail corridor and in front of the Augusta Mall.
- Area retailers include Macy's, TJ Maxx, Dillard's, Haverty's, Walmart and many more.
- Augusta is home to The Masters Golf Tournament, Medical College of Georgia and Augusta State University.
- Augusta is the 2nd largest city in Georgia and continues to grow.



DEMOGRAPHICS	1 MILE	3 MILES	5 MILES
Total Households	3,129	20,904	59,935
Total Population	6,638	48,842	151,530
Average HH Income	\$64,471	\$67,649	\$67,725

For More Information, Contact

CHRIS BOWMAN | 404.812.8928 | cbowman@skylineseven.com
 JOSH WULZ | 404.812.8922 | jwulz@skylineseven.com

800 MT. VERNON HIGHWAY NE | SUITE #425 | 404.812.8928 | SKYLINESEVEN.COM



Wrightsboro Road Pad Site

Wrightsboro Road, Augusta, GA 30909

FOR LEASE



For More Information, Contact

CHRIS BOWMAN | 404.812.8928 | cbowman@skylineseven.com
JOSH WULZ | 404.812.8922 | jwulz@skylineseven.com

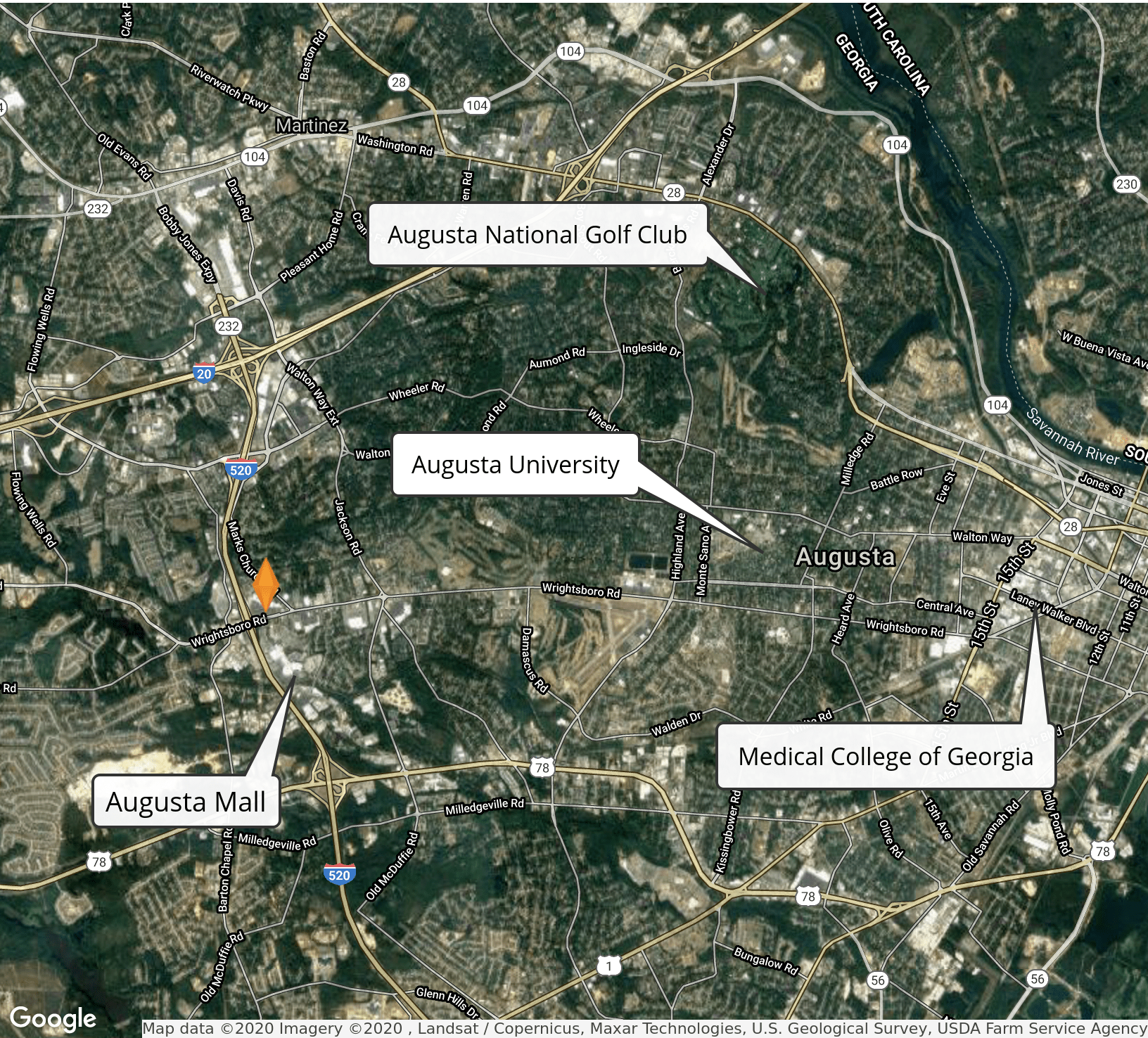
800 MT. VERNON HIGHWAY NE | SUITE #425 | 404.812.8928 | SKYLINESEVEN.COM



Wrightsboro Road Pad Site

Wrightsboro Road, Augusta, GA 30909

FOR LEASE



For More Information, Contact

CHRIS BOWMAN | 404.812.8928 | cbowman@skylineseven.com
JOSH WULZ | 404.812.8922 | jwulz@skylineseven.com

800 MT. VERNON HIGHWAY NE | SUITE #425 | 404.812.8928 | SKYLINESEVEN.COM

