



Treasure & Associates

COMMERCIAL REAL ESTATE

Brokerage | Tenant Representation | Consultation | Development

FOR LEASE

6001 Tain Dr.

Dublin, OH 43017

3 offices for lease. Enjoy the amenities of Muirfield Village!

For More Information, call

(614) 289-8777

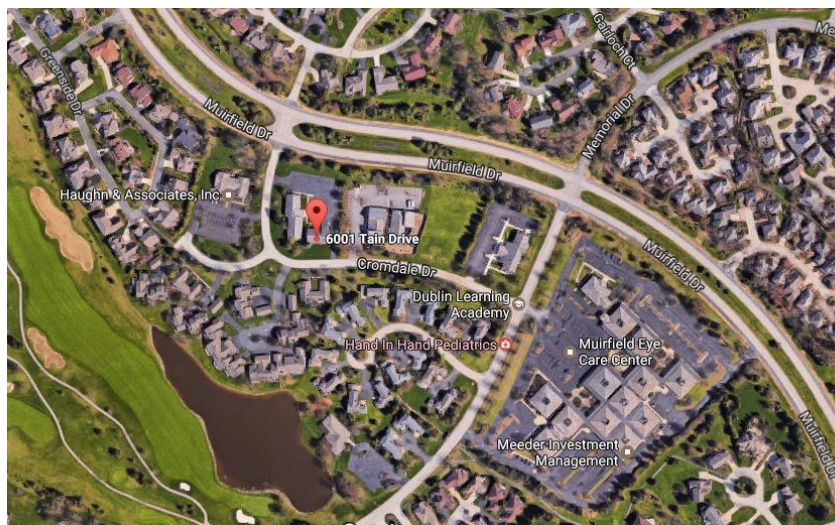
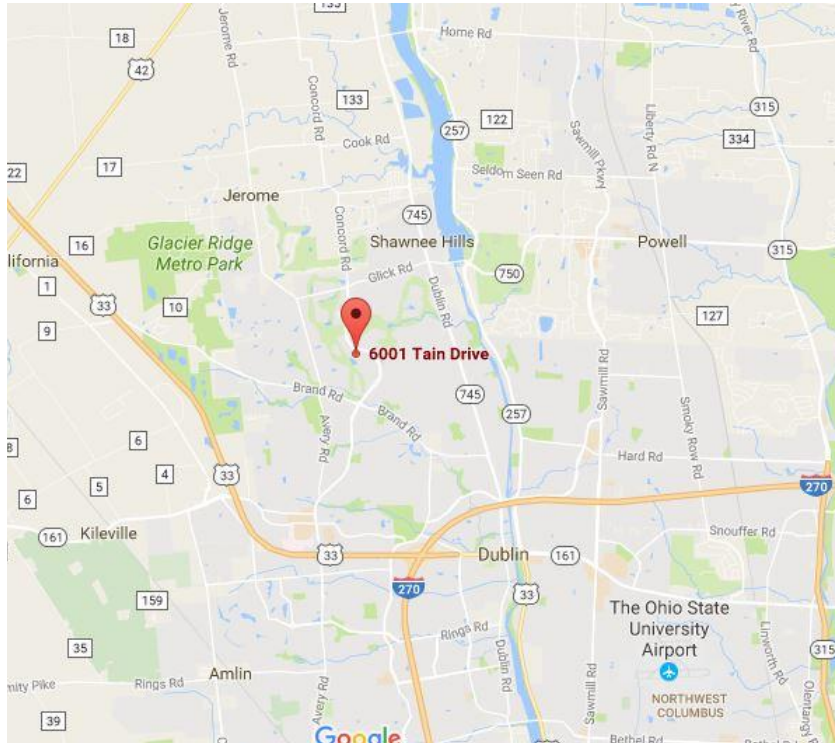
- Restaurants and shopping nearby
- Large parking lot
- Ideal for professional services firms such as insurance, wealth management, or law firms. Current tenants include a residential realty company, UBS, education center, a data processing company, and more.
- Live and work in Muirfield!
- One to three offices available all at \$350 per month. Includes all utilities, janitorial, exterior and interior maintenance. No hidden fees.

Tim Treasure, Principal, SIOR
1733 W. Third Ave.
Columbus, OH 43212
TTreasure@treasureandassociates.com



6001 Tain Dr.

Dublin, OH 43017



Tim Treasure, Principal, SIOR
1733 W. Third Ave.
Columbus, OH 43212
TTreasure@treasureandassociates.com



Treasure & Associates
COMMERCIAL REAL ESTATE
Brokerage | Tenant Representation | Consultation | Development

FOR LEASE

6001 Tain Dr.

Dublin, OH 43017

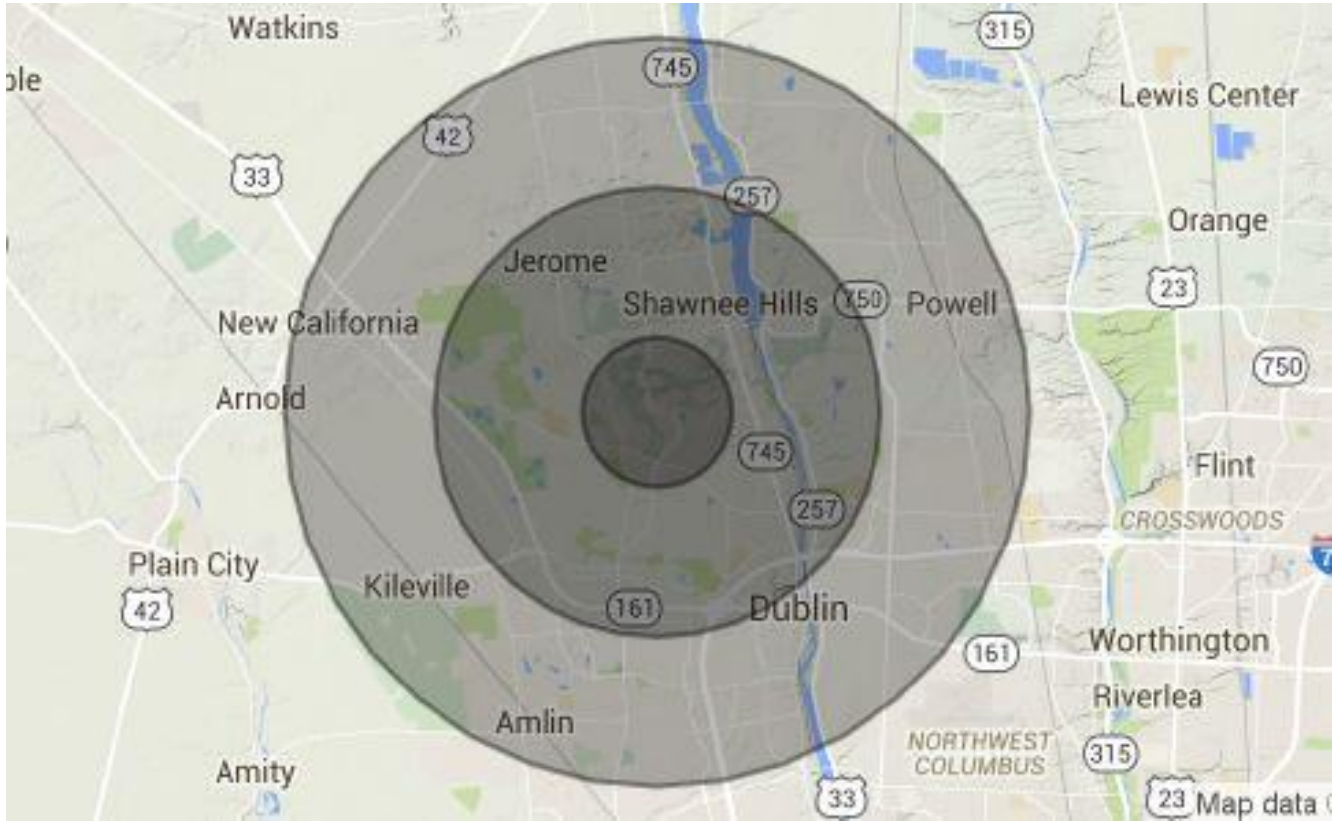


Tim Treasure, Principal, SIOR
1733 W. Third Ave.
Columbus, OH 43212
TTreasure@treasureandassociates.com

The information contained herein has been obtained from the property owner or other sources that we deem reliable. Although we have no reason to doubt its accuracy, no representation or warranty is made regarding the information. The property is offered "as is". The submission may be modified or withdrawn at any time by the property owner.



Demographics



| POPULATION | 1 MILE | 3 MILES | 5 MILES |
|--------------------------------|---------------|----------------|----------------|
| TOTAL POPULATION | 7,778 | 42,589 | 96,901 |
| MEDIAN AGE | 39.1 | 38.1 | 36.2 |
| MEDIAN AGE (MALE) | 38.8 | 37.5 | 35.6 |
| MEDIAN AGE (FEMALE) | 39.2 | 38.3 | 36.7 |
| HOUSEHOLDS & INCOME | 1 MILE | 3 MILES | 5 MILES |
| TOTAL HOUSEHOLDS | 2,550 | 15,045 | 37,420 |
| # OF PERSONS PER HH | 3.1 | 2.8 | 2.6 |
| AVERAGE HH INCOME | \$155,951 | \$145,473 | \$118,067 |
| AVERAGE HOUSE VALUE | \$413,793 | \$425,800 | \$372,780 |

Tim Treasure, Principal, SIOR
 1733 W. Third Ave.
 Columbus, OH 43212
 TTreasure@treasureandassociates.com



Treasure & Associates

COMMERCIAL REAL ESTATE

Brokerage | Tenant Representation | Consultation | Development

Tim Treasure

Biography



Tim has over twenty years of specialized tenant and landlord representation for Class A and Class B office buildings in Central Ohio (Columbus, Ohio MSA). Tim began his commercial real estate career in July 1994, with a primary focus in office leasing and investment sales. In only his second year, Tim was awarded the prestigious “Rookie of the Year” award which is given annually by the Columbus Board of Realtors Commercial Investments Section for transactions totaling over \$9,000,000. To date, Tim has leased (and/or sold) commercial real estate transactions totaling over \$100,000,000. In 2006, Tim was awarded the SIOR designation and membership into the National Society of Industrial and Office Realtors. This designation is awarded to approximately ten (10) percent of the industry. Tim has negotiated multiple transactions on behalf of Johnson Controls, Inc., McDonald’s Corporation, Pitney Bowes, Inc., Batelle Pulmonary Therapeutics, Inc. Norman Jones Enlow and Co., Advanced Data Processing Inc., Dismas Distribution, Libertas Wealth Management, Columbus First Bank, Baez Azimuth Ltd., Miller 3 & 37 LLC, Vertical Adventures, Creative Palette, Appian Manufacturing, Eye Columbus LLC, Your Pie, and The Shepard Law Firm.

Tim is a certified member of SIOR (Society of Industrial and Office Realtors) which is a worldwide organization specializing in membership for highly successful commercial real estate salespersons, brokers and developers. Formerly, Tim was a nine year member of the City of Grandview Heights, OH board of zoning appeals and former board member of the Recognition Committee and Chairperson of the Education Committee at the Columbus Board of Realtors. In addition Tim served two consecutive terms as vestry member of Trinity Episcopal Church in Columbus, OH. Tim was chairperson for both terms for the stewardship program and was responsible for securing pledges for the church.

Personally, Tim is happily married to wife, Anne for more than thirty years and is proud to be the father of four children. Anne and Tim reside in Grandview Heights, Ohio.

Specialties

- Sale - Industrial
- Sale - Land
- Sale - Multifamily/Apartment
- Sale - Office
- Lease - Industrial
- Lease - Miscellaneous
- Lease - Office
- Lease - Retail
- Lease - Tenant Representation

Tim Treasure, Principal, SIOR

1733 W. Third Ave.

Columbus, OH 43212

TTreasure@treasureandassociates.com