

“Market Ready” Medical/Dental Office Space for Lease

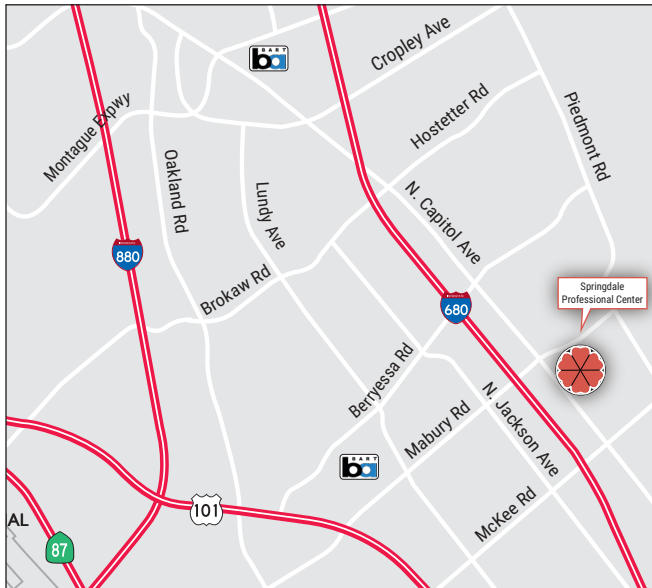
750 North Capitol Avenue

San Jose, CA



Property Size: ±1,419 SF

As exclusive agent(s), we are pleased to offer the following spaces:



Springdale Professional Center

- ◆ Single-Story Professional Medical/Dental/Office Complex
- ◆ Perfect for DDS, PT and Chiropractic Uses!
- ◆ Easy 680 Freeway Access and Walking Distance to Light Rail and Minutes to Berryessa Bart Station

◆ Suite C-7: ±1,419 SF

Plumbing, Compressed Air and Oral Vacuum in Place for Dental Office Use
Open Floorplan with New Flooring, LED Lighting and Paint

- ◆ 5/1000 Parking Ratio
- ◆ Competitive Lease Rate with No Pass-Through of CAM Expenses
- ◆ Lock Box On-Site or Appointment to Tour



Geri Wong 408.987.4134 gwong@ngkf.com CA RE License #01142432

Patty Steele 408.982.8463 psteele@ngkf.com CA RE License #00839635

3055 Olin Avenue, Suite 2200 San Jose, CA 95128 Tel 408.727.9600 Fax 408.988.6340

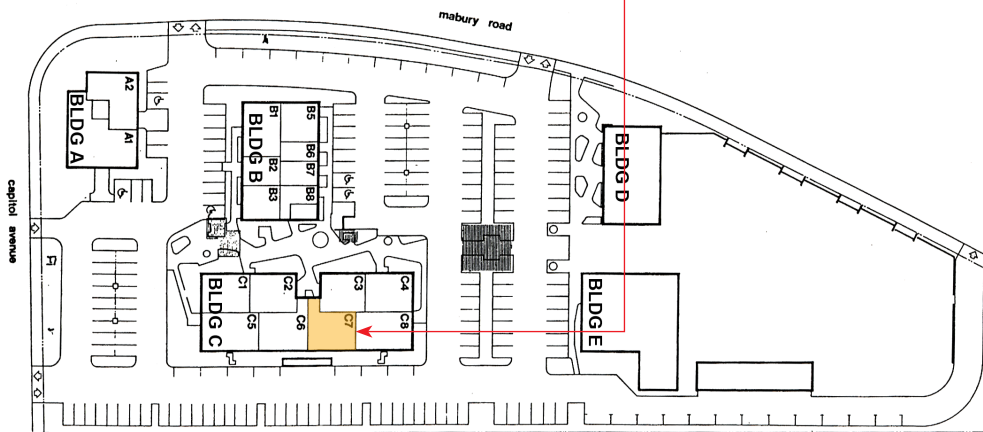
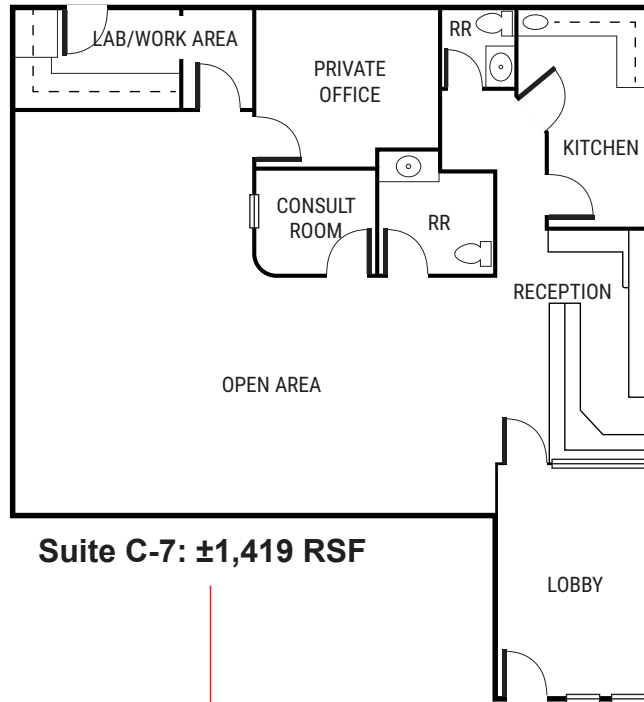
www.ngkf.com

“Market Ready” Medical/Dental Office Space for Lease

750 North Capitol Avenue

San Jose, CA

Floorplan



Gerri Wong 408.987.4134 gwong@ngkf.com CA RE License #01142432

Patty Steele 408.982.8463 psteele@ngkf.com CA RE License #00839635

3055 Olin Avenue, Suite 2200 San Jose, CA 95128 Tel 408.727.9600 Fax 408.988.6340

www.ngkf.com

The distributor of this communication is performing acts for which a real estate license is required. The information contained herein has been obtained from sources deemed reliable but has not been verified and no guarantee, warranty or representation, either express or implied, is made with respect to such information. Terms of sale or lease and availability are subject to change or withdrawal without notice.

17-1138 • 07/20

“Market Ready” Medical/Dental Office Space for Lease

750 North Capitol Avenue

San Jose, CA

Suite C-7 (±1,419 SF)



Gerri Wong 408.987.4134 gwong@ngkf.com CA RE License #01142432

Patty Steele 408.982.8463 psteele@ngkf.com CA RE License #00839635

3055 Olin Avenue, Suite 2200 San Jose, CA 95128 Tel 408.727.9600 Fax 408.988.6340

www.ngkf.com

The distributor of this communication is performing acts for which a real estate license is required. The information contained herein has been obtained from sources deemed reliable but has not been verified and no guarantee, warranty or representation, either express or implied, is made with respect to such information. Terms of sale or lease and availability are subject to change or withdrawal without notice.

17-1138 • 07/20

“Market Ready” Medical/Dental Office Space for Lease

750 North Capitol Avenue

San Jose, CA

Amenities Map



1). Berryessa Hills

- Retail**
- Autozone
 - Bank of America
 - DD's Discounts
 - Dollar Tree
 - H&R Block
- Dining & Grocery**
- Donuts
 - Gabrielle's Food Market
 - House of Teriyaki
 - Mountain Mike's
 - McDonald's
 - Pandora Cafe
 - Tastea Smoothies
 - Umai Savory Hotdogs

2). Berryessa Corners

- Retail**
- Bank of America
 - Citi Bank
 - CVS
 - Herbal Health Foot Massage
 - Modern Dragon Taekwondo
 - Speedway Gas Station
 - The UPS Store
 - Wells Fargo
- Dining & Grocery**
- Jade China
 - Pho Yen Deli
 - Red Chili
 - Round Table
 - Safeway
 - T-Spot
 - Valerio's City Bakery

3). Capitol Square Mall

- Retail**
- AT&T
 - Chase Bank
 - Chevron Gas Station
 - Cricket Wireless
 - GNC
 - Marshall's
 - Ross
 - Sally Beauty Supply
 - Shoe Palace
 - Target
 - Walgreens
 - Wells Fargo
- Dining & Grocery**
- Cardenas Market
 - Five Guys
 - Hometown Buffet
 - Jamba Juice
 - Togo's
 - Starbucks
 - TK Noodle
 - Wingstop

4). Plaza Adjacent to Capitol Square Mall

- Retail**
- 24 Hour Fitness
 - 76 Gas Station
 - Dollar Tree
 - Fallas Discount Store
 - T-Mobile
 - VP DryCleaners
- Dining & Grocery**
- Bonchon
 - Burger King
 - Chipotle
 - Happy Lemon
 - Mehak of India
 - Panda Express
 - Pho Tick Tock
 - SJ Crawfish
 - Tea Zone
 - Wienerschnitzel

5). McKee Road Plaza

- Retail**
- 24 Hour Fitness
 - Golden Jewelry & Gifts
 - One Hour Cleaners
 - Laptop Repair
- Dining & Grocery**
- 111 Bakery
 - Baskin-Robbins
 - Chavez Supersmarket
 - Dong Phuong Tofu
 - Kim Tar
 - Lee's Sandwiches
 - McKee Seafood Market
 - McDonald's
 - Phnom Penh Market
 - Pho Nhy
 - Roundtable
 - Yum Yum Donuts

6). Jackson Avenue Plaza

- Retail**
- Alliance Medical
 - Farmer's Insurance
 - McKee Laundromat
 - Prime Time Nutrition
 - Son Lee TaekwonDo
 - Valley Florist
- Dining & Grocery**
- MILQ Tea Lounge
 - Stop N' Save
 - Subway
 - Tapioca Express
 - Wendy's

Geru Wong 408.987.4134 gwong@ngkf.com CA RE License #01142432

Patty Steele 408.982.8463 psteele@ngkf.com CA RE License #00839635

3055 Olin Avenue, Suite 2200 San Jose, CA 95128 Tel 408.727.9600 Fax 408.988.6340

www.ngkf.com

