

Nautica Condos Office Space

1425 Dexter Avenue N #B, Seattle



FOR LEASE
2,615 RSF

2nd floor office space available in Seattle's highly sought-after South Lake Union

Jake Bos
206.296.9640
jbos@kiddermathews.com

Jason Miller
206.296.9649
jmiller@kiddermathews.com

kiddermathews.com

km Kidder
Mathews

Nautica Condos Office Space

1425 Dexter Avenue N #B, Seattle

Features

2,615 RSF

Second floor suite with direct entry

4 secure garage parking spaces available

5 private offices, conference room, plus open work area and reception

Kitchen, two private bathrooms, and server room

High ceilings and quality existing improvements, view of Lake Union

Located along Dexter Ave N corridor with great access to public transportation, bike lanes and three blocks north of Facebook HQ



Jake Bos
206.296.9640
jbos@kiddermathews.com

Jason Miller
206.296.9649
jmiller@kiddermathews.com

kiddermathews.com

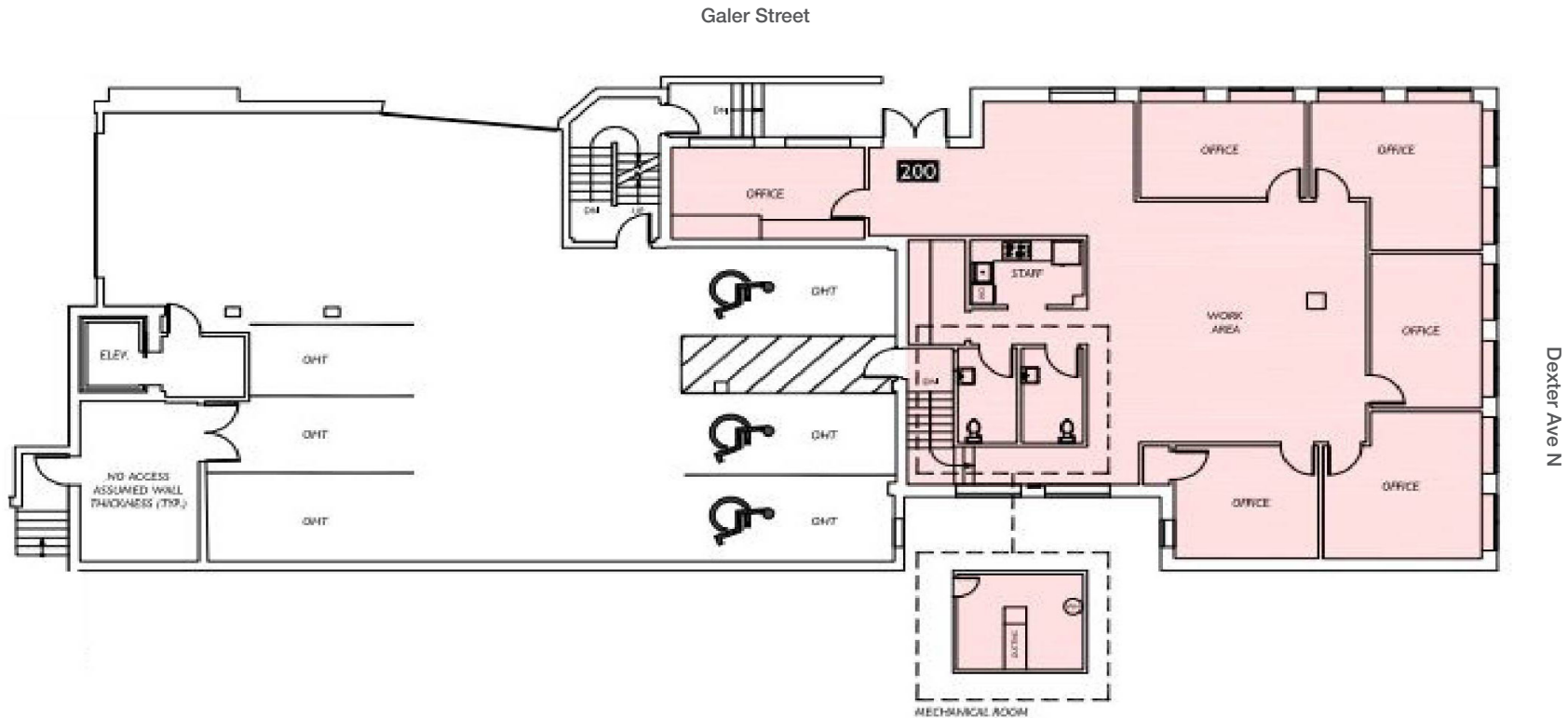
km Kidder
Mathews

This information supplied herein is from sources we deem reliable. It is provided without any representation, warranty or guarantee, expressed or implied as to its accuracy. Prospective Buyer or Tenant should conduct an independent investigation and verification of all matters deemed to be material, including, but not limited to, statements of income and expenses. Consult your attorney, accountant, or other professional advisor.

Nautica Condos Office Space

1425 Dexter Avenue N #B, Seattle

Floor Plan - Suite B



Jake Bos
206.296.9640
jbos@kiddermathews.com

Jason Miller
206.296.9649
jmiller@kiddermathews.com

kiddermathews.com

