

3700 Professional Center

3711 Pacific Avenue Tacoma, Washington 98418

Ample
Lighted
Parking

Elevator Access

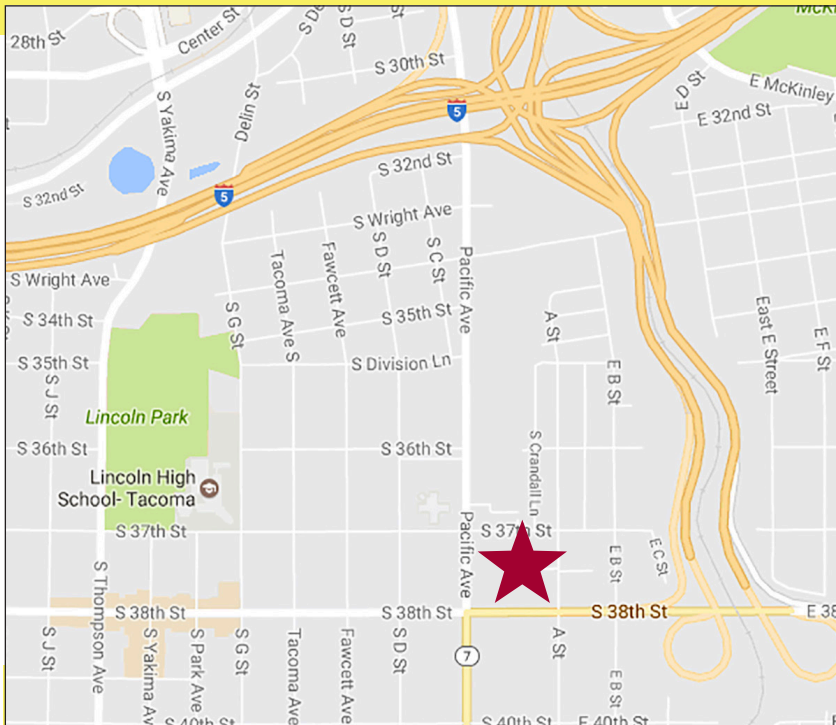
Move In Ready

Several
Floor
Plans
Available

Excellent parking & access on Pacific Avenue South (SR7)

Other fine tenants include

All Womens Health, Pierce Co Health Department Vital Records, Weneha



Four medical, dental or professional spaces Available...

- Suite 100 - 1,543 square foot space
- Suite 101 - 1,367 square foot space
- Suite 201 - 1,388 square foot space
- Suite 300 - 1,563 square foot space

\$16.00 - 20.00 modified gross

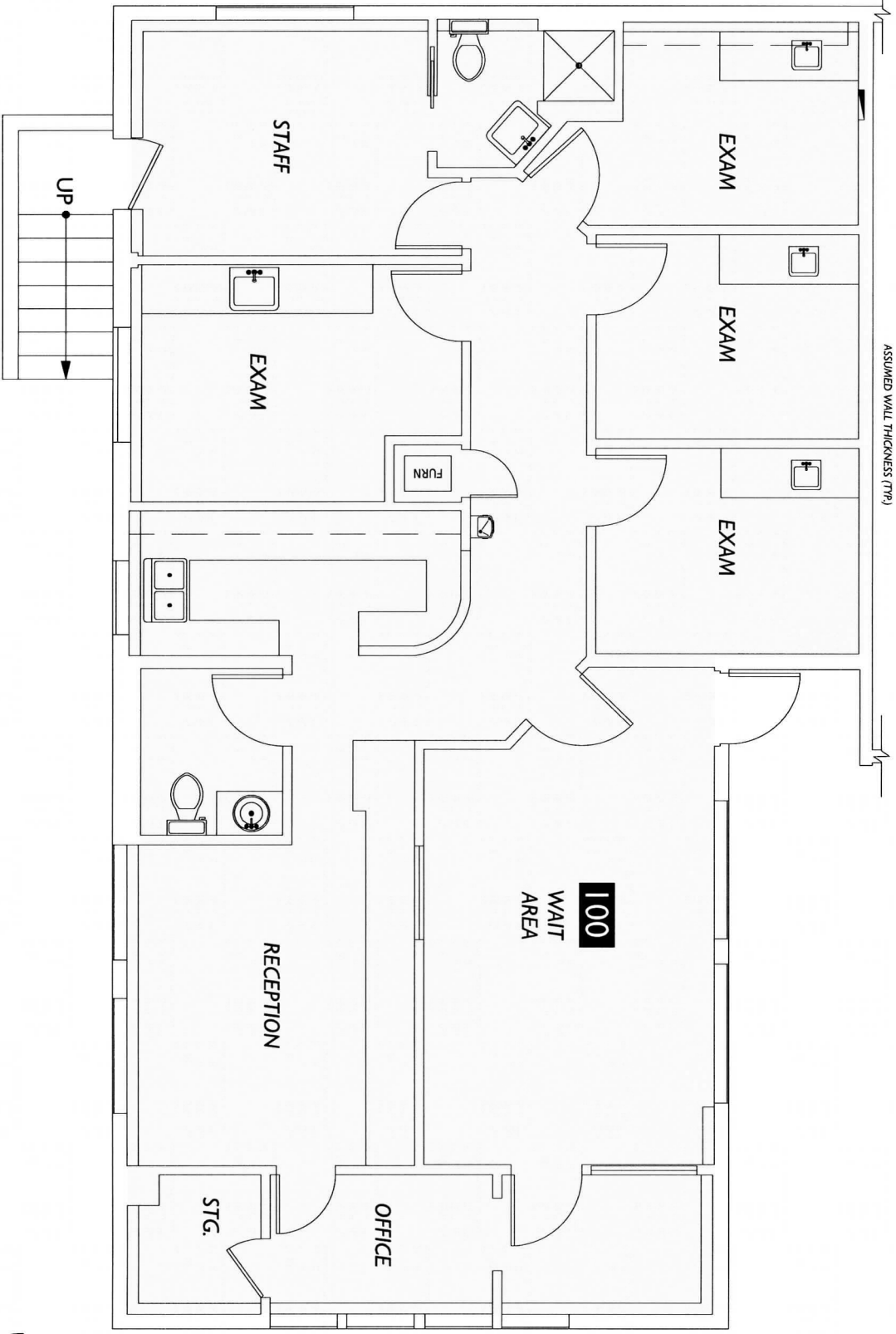
**JOHNSON
COMMERCIAL**



For leasing information call Tim Johnson at 253.209.9999
please visit www.johnson-commercial.com

ASSUMED WALL THICKNESS (TYP)

Adjacent Suite



Parking

Suite #
Suite 100

Occupant Area
1,539

Parking

Client
Cascade Pacific
2005 Mildred Street West
Fircrest, WA 98466

Subject
Office
3711 Pacific Avenue, Suite 100
Tacoma, WA 98418

Lease Plan
100

Suite



Scale

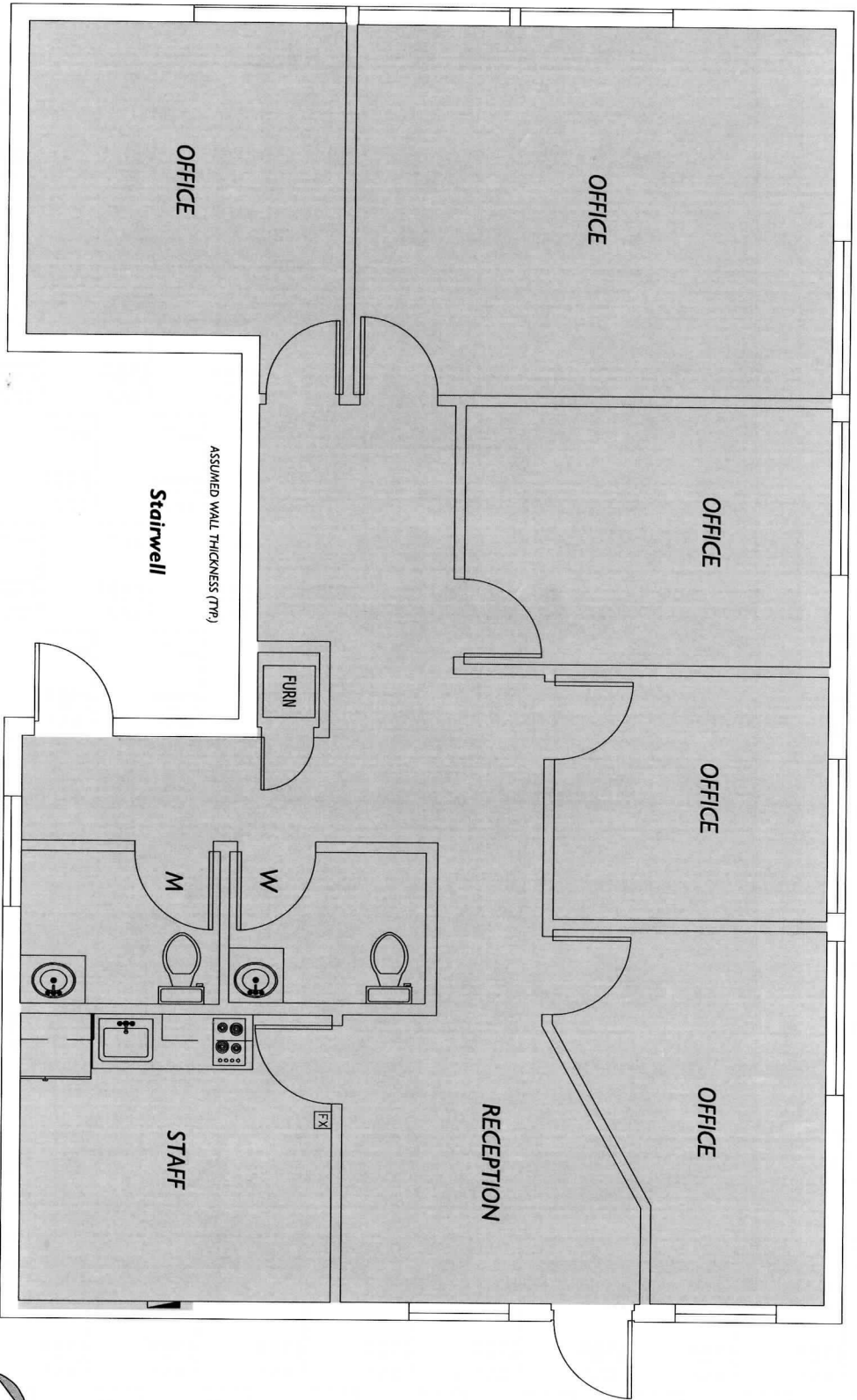
2-D FLOOR PLANS
AS-BUILT
2DFLOORPLANS.COM
206-328-7410
600 NW Gilman Blvd, Suite E
Issaquah, WA 98027

Measured: September 2016

Project: C16-733



Pacific Avenue



ASSUMED WALL THICKNESS (TYP)

ASSUMED WALL THICKNESS (TYP)



Occupant
Suite # Suite 201
Area 1,388

Area Analysis performed in accordance with ANSIBOMA Z65.1-2010 Standard.

Client Cascade Pacific
 2005 Mildred Street West
 Filcrest, WA 98466

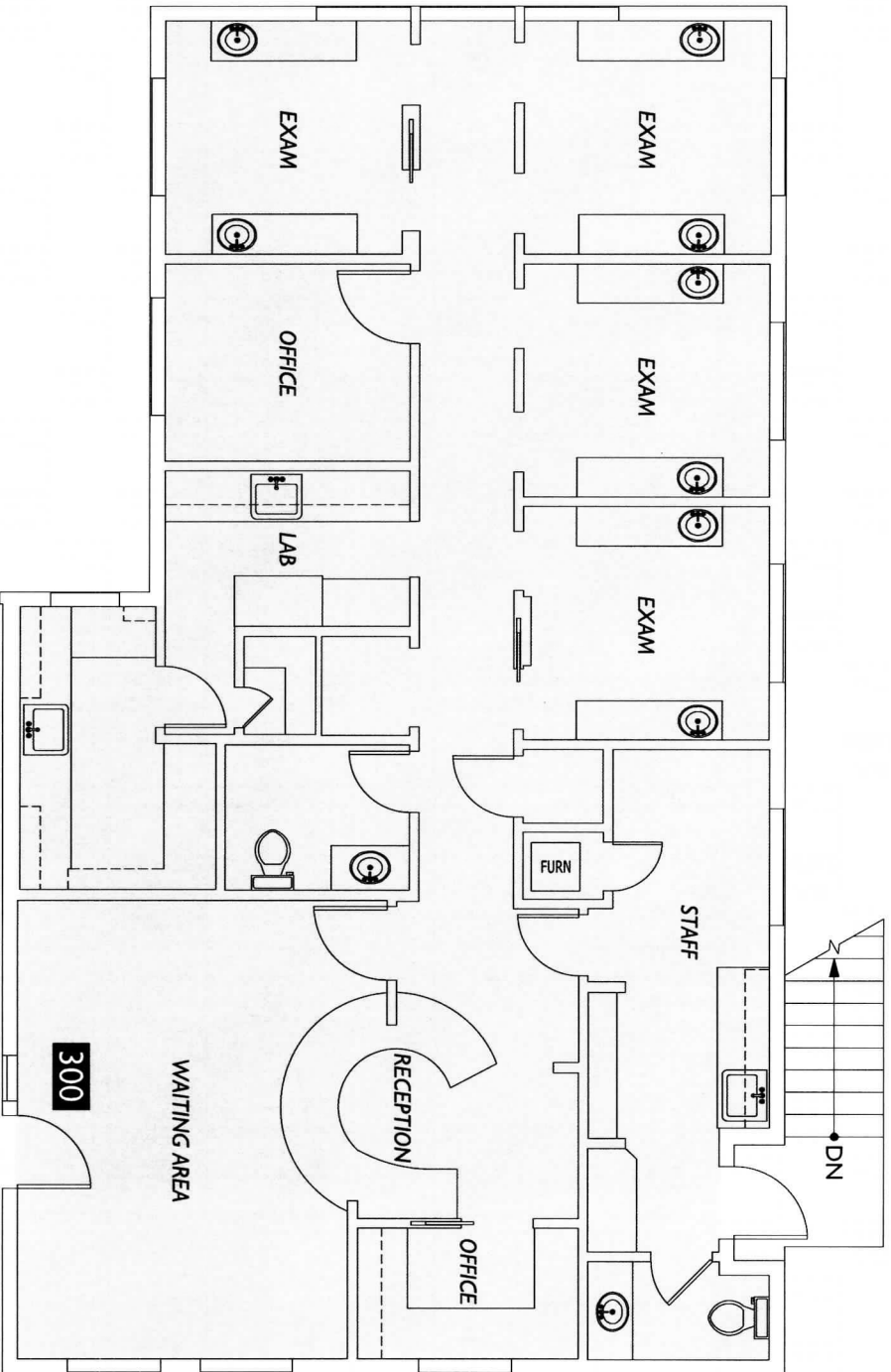
Subject Office Building
 3711 Pacific Avenue
 Tacoma, WA 98418

Lease Plan
Suite 201



2-D FLOOR PLANS
 2DFLOORPLANS.COM
 206-328-7410
 600 NW Gilman Blvd. Suite E
 Issaquah, WA 98027

Measured: February 2016 **Project:** C16-208



Suite #
Suite 300

Occupant Area
1,550



<p>Client</p> <p>Cascade-Pacific Real Estate, LLC 2005 Mildred Street West Fircrest, WA 98466</p>	<p>Subject</p> <p>Dental Suite 3711 Pacific Avenue Tacoma, WA 98418</p>	<p>Lease Plan</p> <p>300 Suite</p>	<p>Scale</p>	<p>2-D FLOOR PLANS AG-BUILT</p> <p>2DFLOORPLANS.COM 206-328-7410 fax 206-328-4764 1700 21st Avenue South Suite 100 Seattle, WA 98144</p> <p>Measured: May 2015 Project: C15-550</p>
------------------------------------------------------------------------------------------------------------------	----------------------------------------------------------------------------------------	------------------------------------------------------	---------------------	----------------------------------------------------------------------------------------------------------------------------------------------------------------------------------------------------------------------