

126 DELANCEY STREET

Between Norfolk & Essex Streets

**BRAND THIS BUILDING FEATURING
PROMINENT ILLUMINATED FACADE SIGNAGE**



DETAILS

Ground Level
3,631 SF (Divisible)

Basement
4,000 SF

Frontage
40' 2"

Term
Negotiable

Possession
November 2020

Asking Rent
Please Inquire

SINVIN
COMMERCIAL REAL ESTATE & ADVISORY

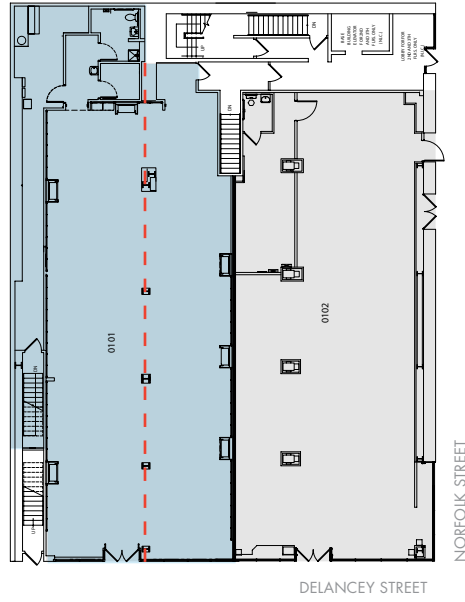
NEIGHBORS

- Regal Cinemas
- Essex Market
- The Gutter Bowling Alley
- Target
- Market Line
- City MD
- International Center Of Photography
- Trader Joes
- Sprint
- Metro PCS
- NYU Langone
- Fabco Shoes
- McDonald's
- Chase

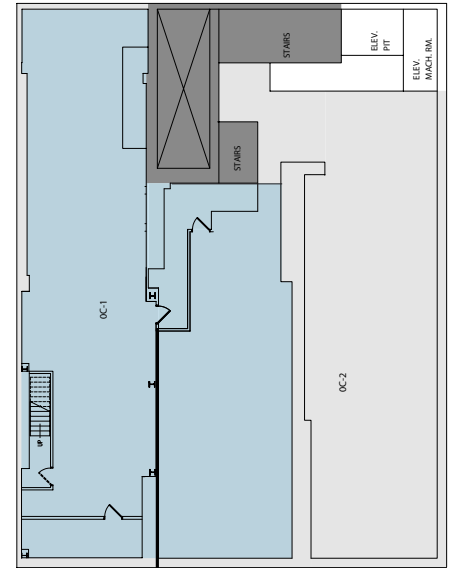
SPACE NOTES

- 1,200 SF of illuminated building signage is available
- All uses, venting possible
- FMJZ subway station directly in front of the store
- Large display windows on both sides of the entrance

Divisions possible from 1,400 SF



GROUND FLOOR



BASEMENT

LOCATED AT THE CROSSROADS OF THE NEW **ESSEX CROSSING DEVELOPMENT** & THE WILLIAMSBURG BRIDGE

- Essex Crossing: 1.9 million square foot development
- 350,000 square feet of office space
- 1,000+ residential units
- 100,000 square feet of green space
- 150,000 square foot Market Line
- Over 71,000 cars pass by daily
- Next to the Delancey subway station with an average of 24,000 passengers daily

PLEASE CONTACT



CALL OR TEXT
646.392.8710

Christopher Owles
chris@sinvin.com

Margie Sarway
margie@sinvin.com



126 DELANCEY STREET

Between Norfolk & Essex Streets

126 DELANCEY STREET

Between Norfolk & Essex Streets

BUILDING SIGNAGE POTENTIAL

