

LAND FOR SALE

29192 SATSUMA ROAD

Livingston, LA 70754



PROPERTY HIGHLIGHTS

- +/- 1.416 Acres Available
- Adjacent to Dollar General
- Quick Access to I-12 & HWY 190
- 138' of Road Frontage

OFFERING SUMMARY

Sale Price:	\$109,500
Lot Size:	1.416 AC
Price per acre	\$77,331



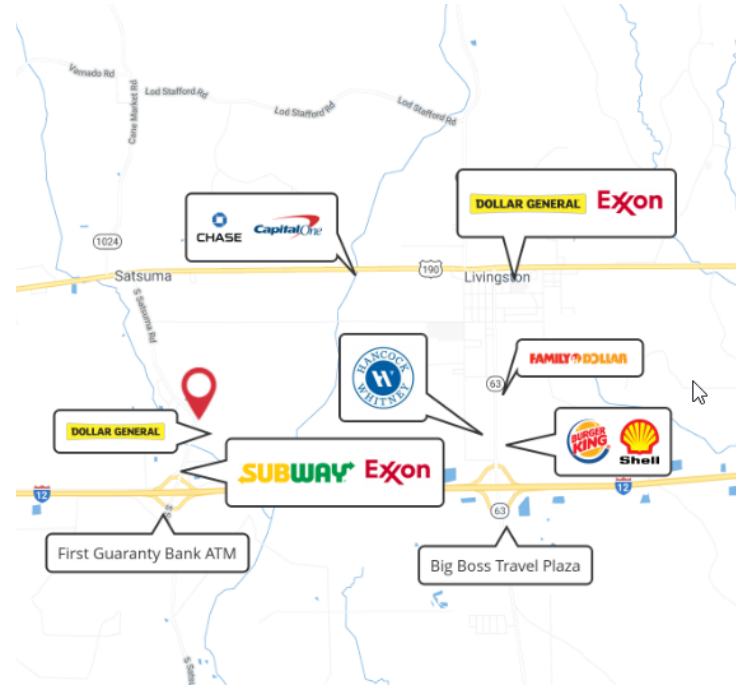
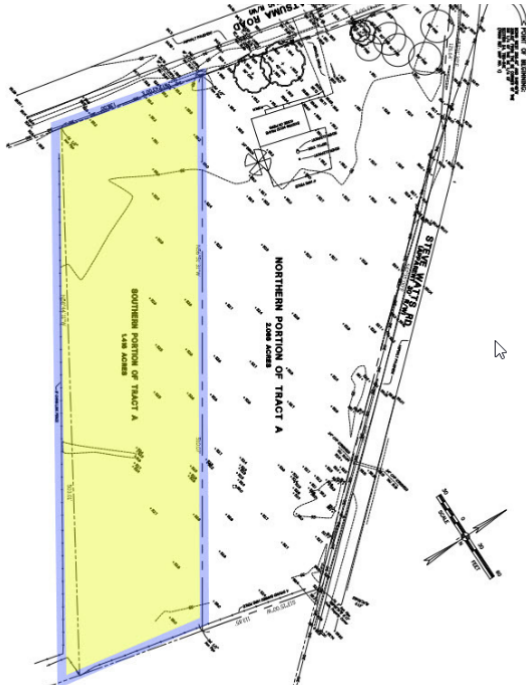
Evan Scroggs, CCIM
escroggs@lee-associates.com
D 225.427.9240

Elliott Scroggs
elliott.scroggs@lee-associates.com
D 225.427.9200

All information furnished regarding property for sale, rental or financing is from sources deemed reliable, but no warranty or representation is made to the accuracy thereof and same is submitted to errors, omissions, change of price, rental or other conditions prior to sale, lease or financing or withdrawal without notice. No liability of any kind is to be imposed on the broker herein.

LAND FOR SALE 29192 SATSUMA RD

Livingston, LA 70754



Sale Price	\$109,500
------------	------------------

OFFERING SUMMARY

Lot Size:	1.416 Acres
Price / Acre:	\$77,331

PROPERTY OVERVIEW

+/-1.416 Acres available next to the newly constructed Dollar General. The subject property is +/- 1.0 mile away from I-12 and +/- 1.5 miles away from Florida Blvd. The property has approx. 138' of frontage on S. Satsuma Rd and depth of approx. 510'. Located in Flood Zone AE. The vacant lot would be ideal for professional offices, medical users, retailers such as clothing stores, nutrition stores, etc.

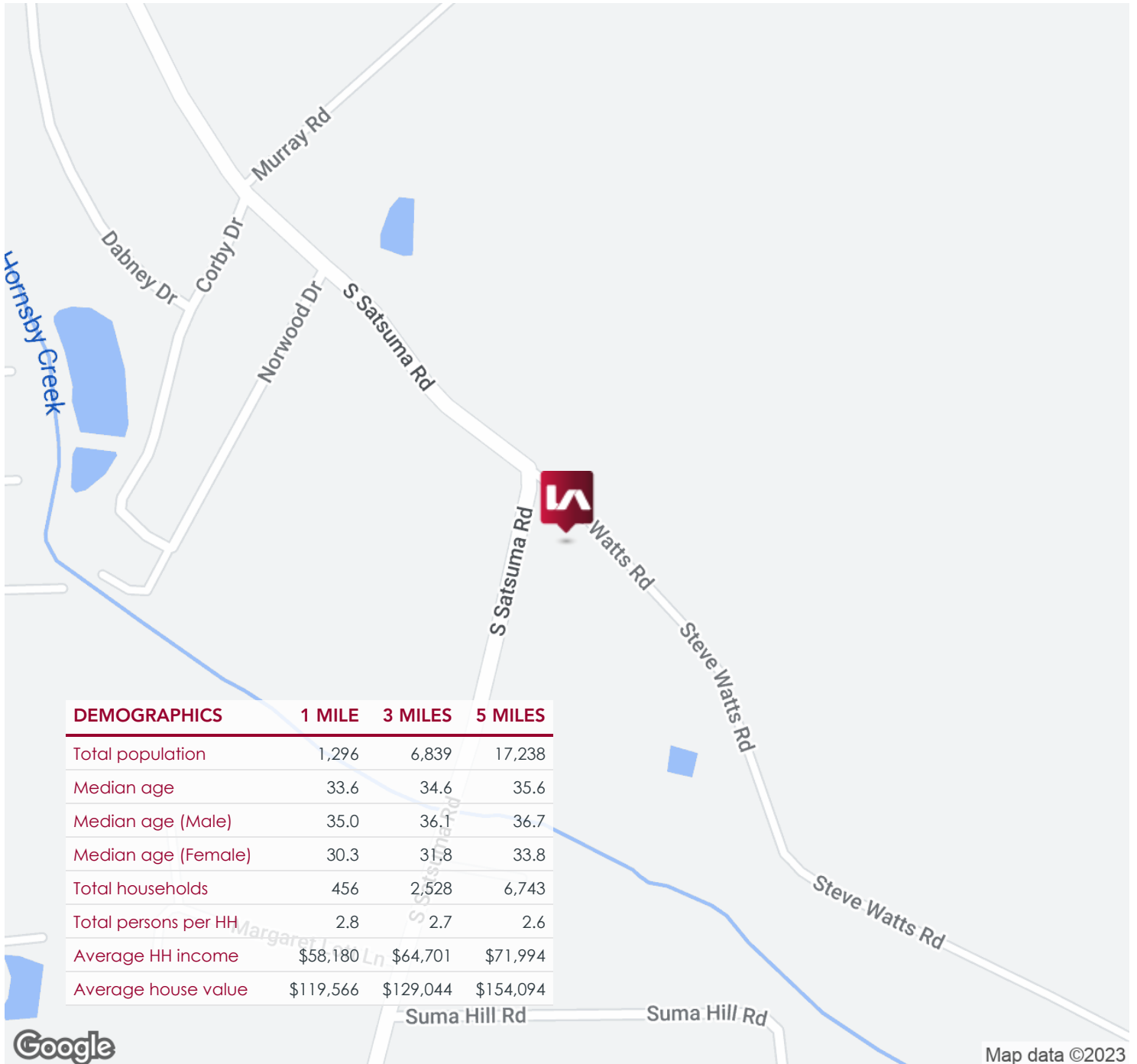
Evan Scroggs, CCIM
escroggs@lee-associates.com
D 225.427.9240

Elliott Scroggs
elliott.scroggs@lee-associates.com
D 225.427.9200

All information furnished regarding property for sale, rental or financing is from sources deemed reliable, but no warranty or representation is made to the accuracy thereof and same is submitted to errors, omissions, change of price, rental or other conditions prior to sale, lease or financing or withdrawal without notice. No liability of any kind is to be imposed on the broker herein.

LAND FOR SALE 29192 SATSUMA ROAD

Livingston, LA 70754



Evan Scroggs, CCIM
escroggs@lee-associates.com
D 225.427.9240

Elliott Scroggs
elliott.scroggs@lee-associates.com
D 225.427.9200

All information furnished regarding property for sale, rental or financing is from sources deemed reliable, but no warranty or representation is made to the accuracy thereof and same is submitted to errors, omissions, change of price, rental or other conditions prior to sale, lease or financing or withdrawal without notice. No liability of any kind is to be imposed on the broker herein.