

FOR LEASE

Delaware County
1 Raymond Drive, Havertown, Pa 19083

ZOMMICK McMAHON

Commercial Real Estate Inc.

610.359.1100

+/- 975-6,000 SF OFFICE SPACE



LEASE PRICE: \$15.00 psf

- +/- 2,740 sf— Double door Vestibule entrance lobby/reception area, 4 offices, cubicles/multi-purpose bullpen room, conference room, kitchenette, 2 private bathrooms.
- Divisible to a 975 sf suite with a common entrance vestibule, 2 offices, reception/waiting area, kitchenette, and a private bathroom.
- Expandable up to 6,000 sf.



ZOMMICK McMAHON
Commercial Real Estate Inc.

1306 Wilmington Pike, Suite A-2
West Chester, PA 19382
610.359.1100

Ronald Casey
610.764.5826 (m)
rcasey@zmcre.com

Steve Dibattista
610.368.2801 (m)
rcasey@zmcre.com

FOR LEASE

Delaware County
1 Raymond Drive, Havertown, Pa 19083

ZOMMICK McMAHON

Commercial Real Estate Inc.

610.359.1100

+/- 3,120 - 9,249 SF OF DRAMATIC OFFICE SPACE

Come join: Philly Inquirer, Senior Helpers, DePersico Group, Glendale Mortgage. Flexible design layout for R & D, medical or simply office. Masonry/steel construction with brick facade.

Location Highlights:

- On site management.
- Convenient to restaurants, banks and shopping.
- Located in Haverford Township with excellent access to major highways including Route 3, Interstate 476 (Blue Route) and I-95. Less than 2 miles from 2 different Blue Route (476) entrances. Public transportation (bus) nearby.



ZOMMICK McMAHON
Commercial Real Estate Inc.

1306 Wilmington Pike, Suite A-2
West Chester, PA 19382
610.359.1100

Ronald Casey
610.764.5826 (m)
rcasey@zmcre.com

Steve Dibattista
610.368.2801 (m)
rcasey@zmcre.com

FOR LEASE

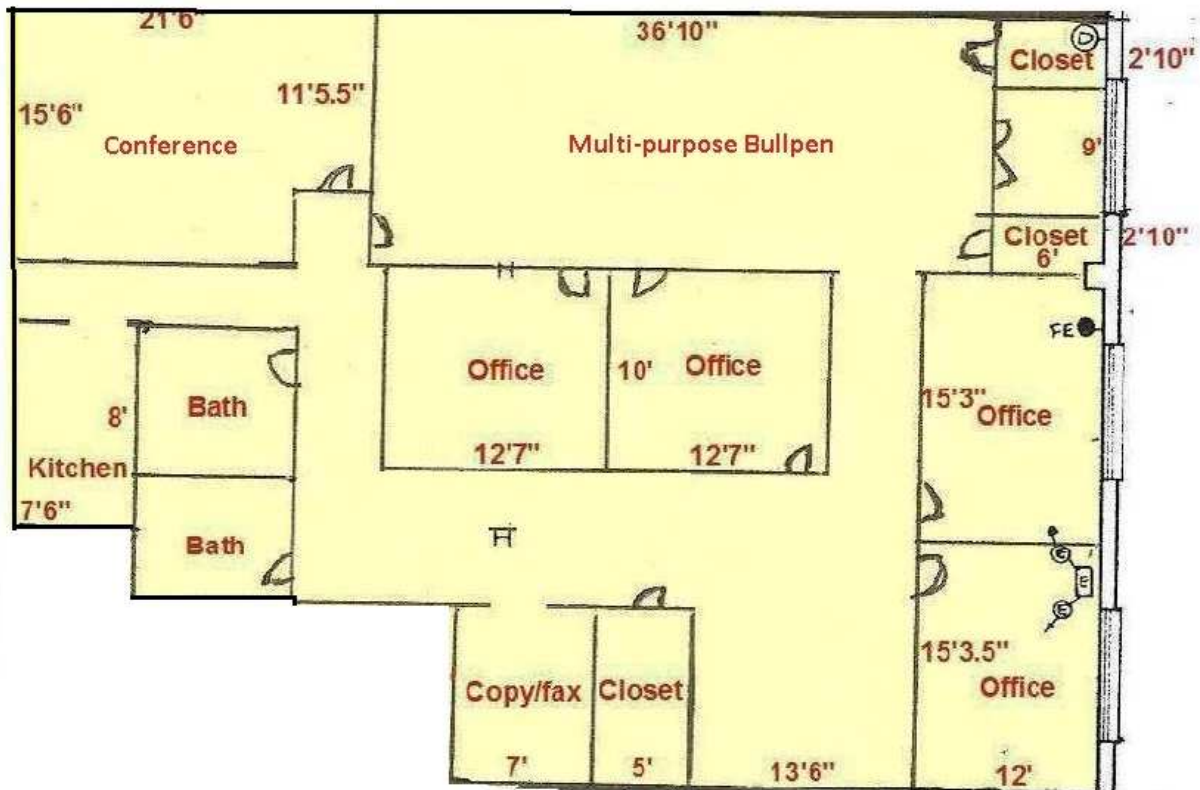
Delaware County
1 Raymond Drive, Havertown, Pa 19083

ZOMMICK McMAHON

Commercial Real Estate Inc.

610.359.1100

SPACE 1D: +/- 2,740 SF



ZOMMICK McMAHON
Commercial Real Estate Inc.

1306 Wilmington Pike, Suite A-2
West Chester, PA 19382
610.359.1100

Ronald Casey
610.764.5826 (m)
rcasey@zmcre.com

Steve Dibattista
610.368.2801 (m)
rcasey@zmcre.com

FOR LEASE

Delaware County
1 Raymond Drive, Havertown, Pa 19083

ZOMMICK McMAHON

Commercial Real Estate Inc.

610.359.1100

ABOUT ZOMMICK McMAHON COMMERCIAL REAL ESTATE

Zommick McMahon Commercial Real Estate, Inc. has been a Metro Philadelphia Area staple since its inception in 1949. The Company was founded by Joseph Zommick, and continues today with John McMahon and his highly experienced staff, whom are all results-oriented professionals. Zommick McMahon Commercial Real Estate, Inc. has devoted Real Estate Specialists in the areas of Investment, Office, Retail, Industrial, as well as extensive experience in all areas of Development.

SOME OF OUR SATISFIED CLIENTS

Bank of America
Walgreen's Drugs
Sunoco Oil Company
Tosco Oil Corporation
Getty Oil Company
Exxon/Mobil Oil Company
Conoco Phillips Oil Company
Wells Fargo
Regency Centers-Reit
Iron Hill Brew Company
Eagle National Bank
Simon Pearce Inc. Restaurants
Springfield Auto Outlet
IGA Banks
Sun East Federal Credit Union
Dunkin Donuts
Simon Pearce Inc. Restaurants
Springfield Auto Outlet



* The information attached and above has been obtained from sources believed to be reliable. While we do not doubt its accuracy, we have not verified it and make no guarantee, warranty or representation of it. It is the Buyer/Lessee responsibility to independently confirm its accuracy and completeness. This is not intended to solicit another Broker's listing.

ZOMMICK McMAHON
Commercial Real Estate Inc.

1306 Wilmington Pike, Suite A-2
West Chester, PA 19382
610.359.1100

Ronald Casey
610.764.5826 (m)
rcasey@zmcre.com

Steve Dibattista
610.368.2801 (m)
rcasey@zmcre.com