

1099

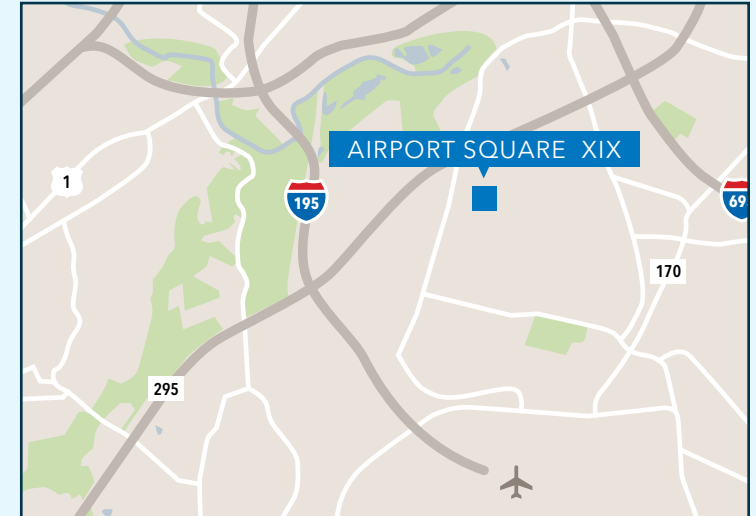
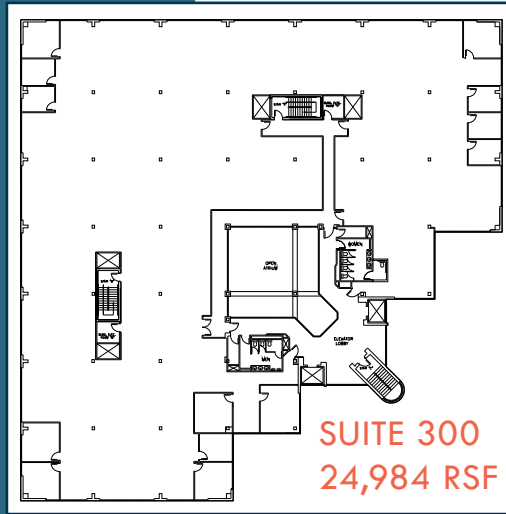
WINTERSON ROAD

 TRANSWESTERN®



OFFICE BUILDING FOR LEASE

AIRPORT SQUARE XIX | LINTHICUM, MARYLAND 21090



PROPERTY HIGHLIGHTS

- 72,535 square foot three-story building
- Built in 1983; renovated in 1988
- 24,984 square foot typical floor size
- Abundant free on-site parking with a parking ratio of 3.67 spaces per 1,000 square feet
- Recently renovated lobby and common areas
 - New, off white floor tiles
 - LED lighting
 - Furnished lobby area
 - Electronic lobby tenant directory
- New, upgraded building facade and entry
- On-site fitness center
- Located 7.5 miles from downtown Baltimore and 32 miles from downtown Washington, DC
- Located in Airport Square, a 220-acre corporate campus just off the Baltimore-Washington Parkway (Route 295) and within 5 minutes of BWI airport
- This park is home to a number of firms in the high technology, telecommunications and security-related industries
- Complete range of business services and restaurants available within the corporate campus

INFORMATION

TOM GENTNER

443.285.7671

tom.gentner@transwestern.com

BRIAN SIEGEL

443.285.7661

brian.siegel@transwestern.com

BRIAN WATTS

443.285.7673

brian.watts@transwestern.com

7160 Columbia Gateway Drive
Suite 210

Columbia, Maryland 21046

443.285.0770

www.transwestern.com