

# Hopping Brook Park 150 Hopping Brook Road | Holliston, Massachusetts

**FOR LEASE**



## 30,000 SF Flex Light Manufacturing Building

150 Hopping Brook Road is located in a high quality park with extensive landscaping, underground utilities and easy access to Route 495 and Route 109 in Milford. Ideal setting for a corporate headquarters location in the heart of MetroWest.

- 15,000 SF Available Immediately
- 50% Office
- Balance R&D/Warehouse
- Two (2) Loading Docks
- 19' Clear Warehouse
- 4 parking spaces per 1,000 SF



For more information please contact:

John Eysenbach 508-651-9017, [johne@rwholmes.com](mailto:johne@rwholmes.com)

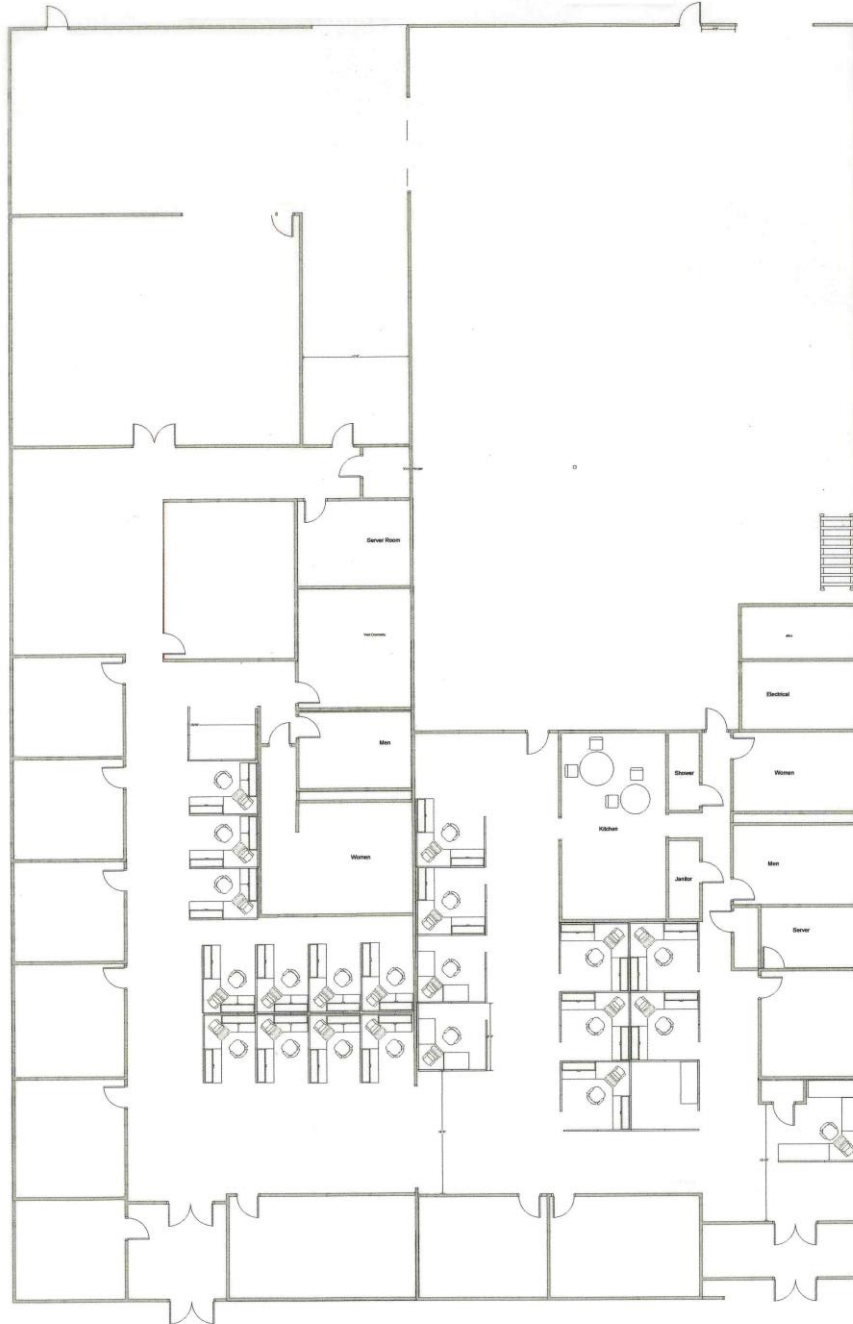
**R.W. HOLMES**  
COMMERCIAL REAL ESTATE

321 Commonwealth Road, Suite 202, Wayland, MA. 01778 | Phone (508) 655-5626 [www.rwholmes.com](http://www.rwholmes.com)

All information furnished regarding property for sale, rental or financing is from sources deemed reliable. No representation is made as to the accuracy thereof and is submitted subject to errors, omissions, change of price, rental or other conditions, prior sale, lease or financing, or withdrawal without notice.

# Hopping Brook Park

150 Hopping Brook Road | Holliston, Massachusetts



For more information please contact:

John Eysenbach 508-651-9017, [johne@rwholmes.com](mailto:johne@rwholmes.com)

**R.W. HOLMES**  
COMMERCIAL REAL ESTATE

321 Commonwealth Road, Suite 202, Wayland, MA. 01778 | Phone (508) 655-5626 [www.rwholmes.com](http://www.rwholmes.com)

All information furnished regarding property for sale, rental or financing is from sources deemed reliable. No representation is made as to the accuracy thereof and is submitted subject to errors, omissions, change of price, rental or other conditions, prior sale, lease or financing, or withdrawal without notice.

# Hopping Brook Park

150 Hopping Brook Road | Holliston, Massachusetts



For more information please contact:

John Eysenbach 508-651-9017, [johne@rwholmes.com](mailto:johne@rwholmes.com)

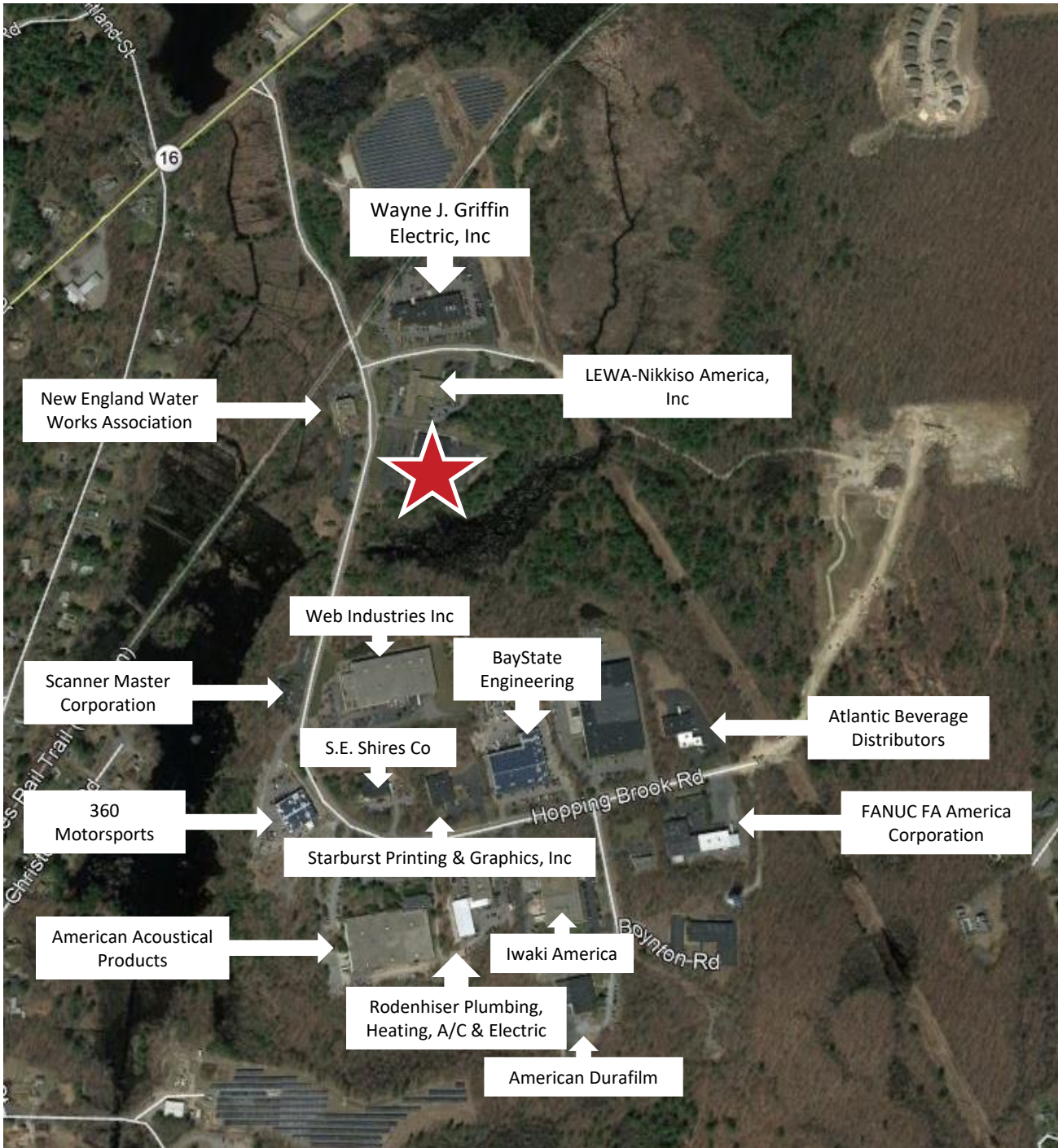
**R.W. HOLMES**  
COMMERCIAL REAL ESTATE

321 Commonwealth Road, Suite 202, Wayland, MA. 01778 | Phone (508) 655-5626 [www.rwholmes.com](http://www.rwholmes.com)

*All information furnished regarding property for sale, rental or financing is from sources deemed reliable. No representation is made as to the accuracy thereof and is submitted subject to errors, omissions, change of price, rental or other conditions, prior sale, lease or financing, or withdrawal without notice.*

# Hopping Brook Park

## 150 Hopping Brook Road | Holliston, Massachusetts



For more information please contact:

John Eysenbach 508-651-9017, [johne@rwholmes.com](mailto:johne@rwholmes.com)

**R.W. HOLMES**  
COMMERCIAL REAL ESTATE

321 Commonwealth Road, Suite 202, Wayland, MA. 01778 | Phone (508) 655-5626 [www.rwholmes.com](http://www.rwholmes.com)

All information furnished regarding property for sale, rental or financing is from sources deemed reliable. No representation is made as to the accuracy thereof and is submitted subject to errors, omissions, change of price, rental or other conditions, prior sale, lease or financing, or withdrawal without notice.