

Panther Lake Development

11026 SE 200th Street, Kent, WA



FOR SALE
\$1,580,000

Fully Entitled Home Development Offering in the
East Hill-Meridian Neighborhood

Nick Ramirez
206.248.6521
nramirez@kiddermathews.com

kiddermathews.com

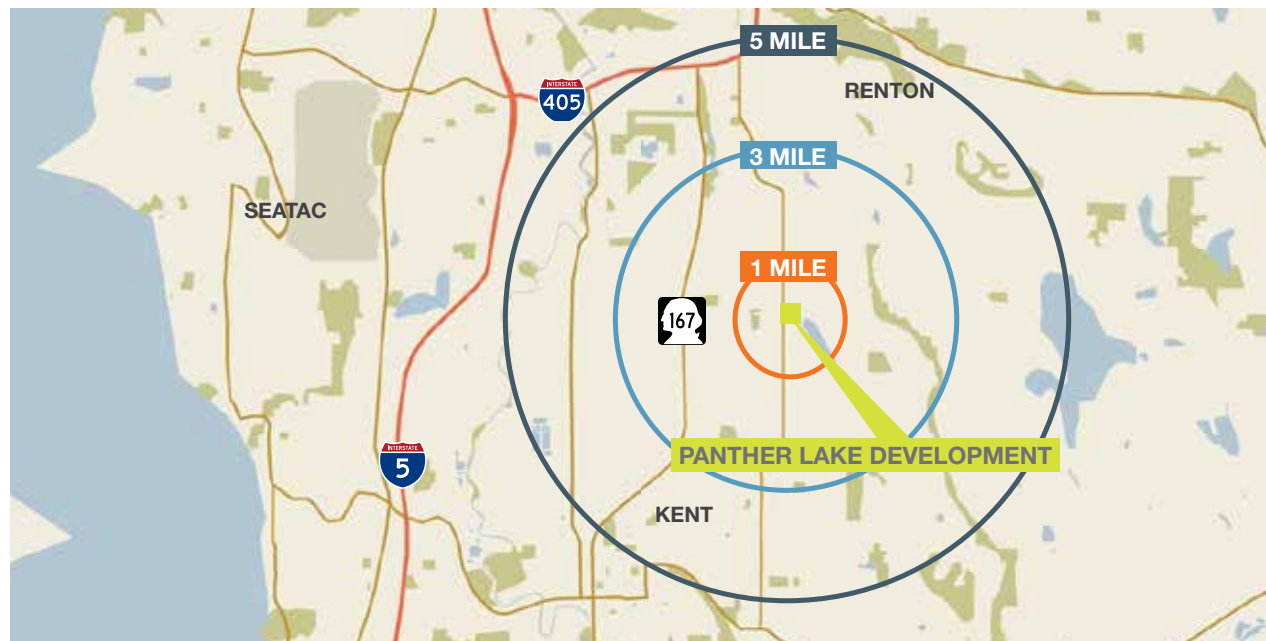


Panther Lake Development

11026 SE 200th Street, Kent, WA

Demographics

	1 MILE	3 MILE	5 MILE
POPULATION			
Estimated Population (2018)	12,329	94,222	253,698
HOUSEHOLDS			
Estimated Average Household Income (2018)	\$80,372	\$73,645	\$66,804
GROWTH			
Household Growth 2018-2023	3.47%	6.35%	7.5%



PROPERTY HIGHLIGHTS

- Fully entitled property
- 12 home development sites
- Located in Kent with quick access to SR-167 & SR-515 (Benson Highway)
- Surrounded by strong growth market with solid demographics and high incomes
- Next to Panther Lake
- Zoned SR-1 (Single Family Residential Development)
- Homes will have greenbelt views

OTHER DEVELOPMENT OPTIONS

- Event venue
- Camp or corporate retreat
- Senior housing
- Private estate

Nick Ramirez
206.248.6521
nramirez@kiddermathews.com

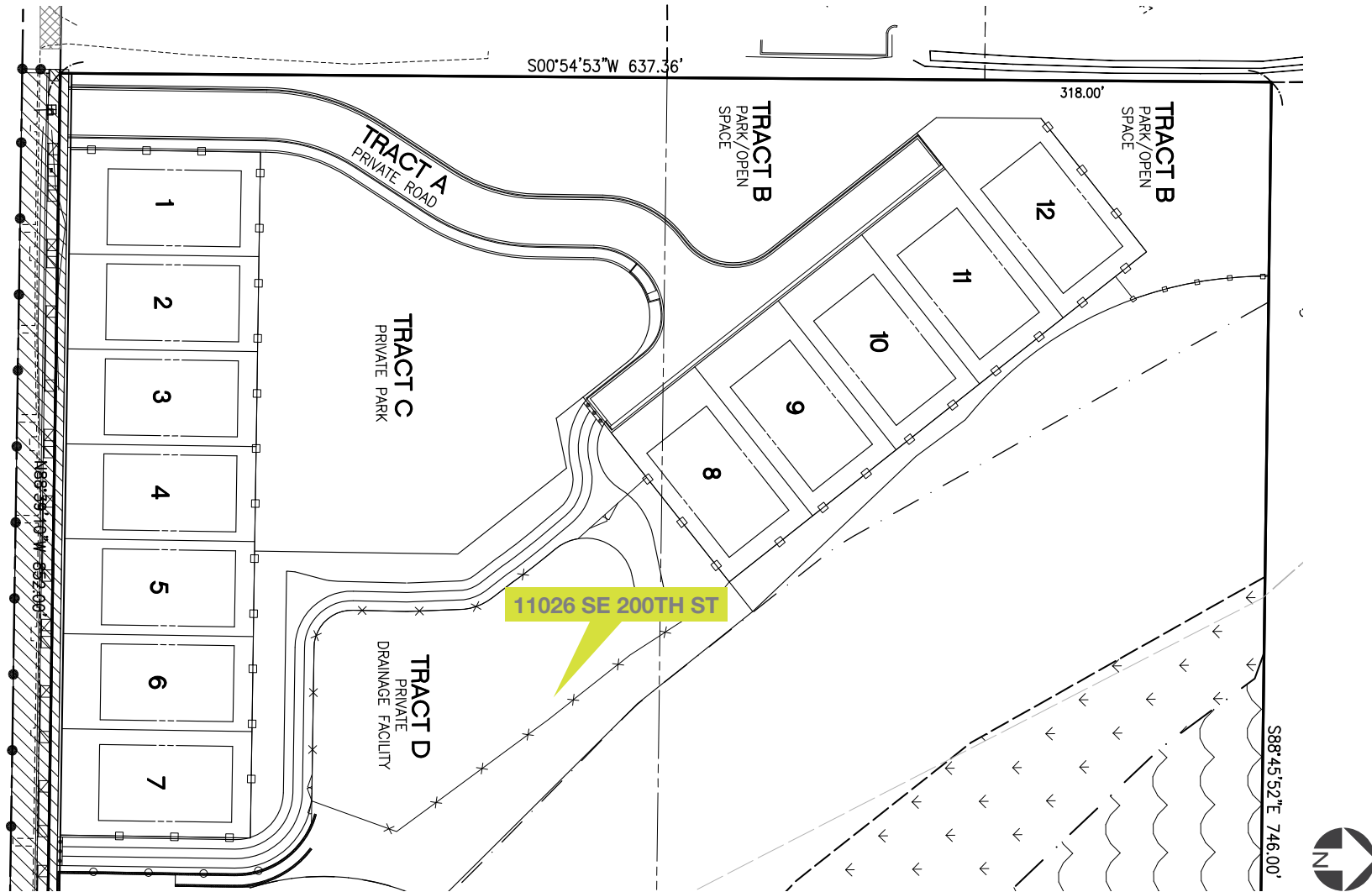
kiddermathews.com



Panther Lake Development

11026 SE 200th Street, Kent, WA

Site Plan



Nick Ramirez
206.248.6521
nramirez@kiddermathews.com

kiddermathews.com



This information supplied herein is from sources we deem reliable. It is provided without any representation, warranty or guarantee, expressed or implied as to its accuracy. Prospective Buyer or Tenant should conduct an independent investigation and verification of all matters deemed to be material, including, but not limited to, statements of income and expenses. Consult your attorney, accountant, or other professional advisor.