



## 500 Renaud Drive

Lafayette, Louisiana 70507

### Property Highlights

- ±10.18 Acres
- I-10 Frontage
- Opportunity Zone
- Excellent Traffic Counts
- Additional 41.32 Acres Available

### Property Description

±10.18 acre parcel of land with excellent I-10 frontage and visibility just off University Avenue. The site is ideally situated for an intensive commercial development. Site has excellent traffic counts, bordered by national tenants, and is located in a Federal Opportunity Zone. Additional ±41.32 acres available.

### Sale Price

\$731,462



For more information

**Flo Meadows, CCIM, CPA**

O: 337 233 9541 | C: 337 258 2301  
fmeadows@latterblum.com

**CALL OR EMAIL FOR MORE INFORMATION**

NO WARRANTY OR REPRESENTATION, EXPRESS OR IMPLIED, IS MADE AS TO THE ACCURACY OF THE INFORMATION CONTAINED HEREIN, AND THE SAME IS SUBMITTED SUBJECT TO ERRORS, OMISSIONS, CHANGE OF PRICE, RENTAL OR OTHER CONDITIONS, PRIOR SALE, LEASE OR FINANCING, OR WITHDRAWAL WITHOUT NOTICE, AND OF ANY SPECIAL LISTING CONDITIONS IMPOSED BY OUR PRINCIPALS NO WARRANTIES OR REPRESENTATIONS ARE MADE AS TO THE CONDITION OF THE PROPERTY OR ANY HAZARDS CONTAINED THEREIN ARE ANY TO BE IMPLIED. LICENSED IN LOUISIANA.

6 Degaulle Square  
Lafayette, LA 70508  
337 233 9541 tel  
[latterblum.com](http://latterblum.com)

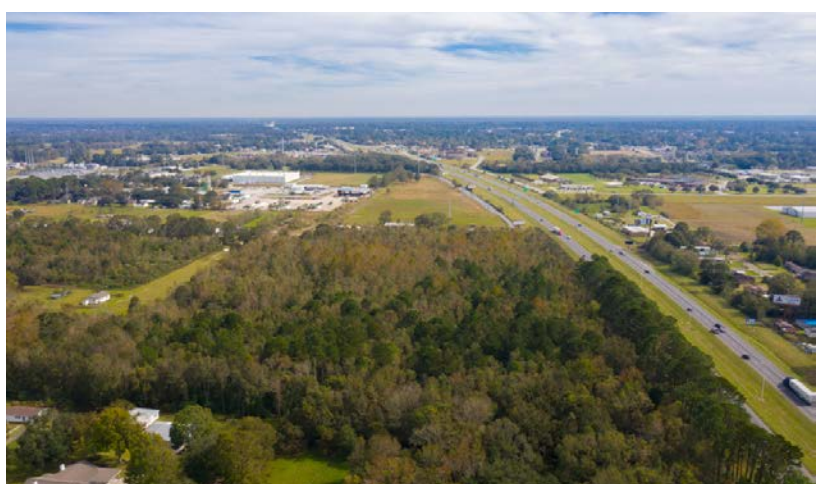
November 16, 2020





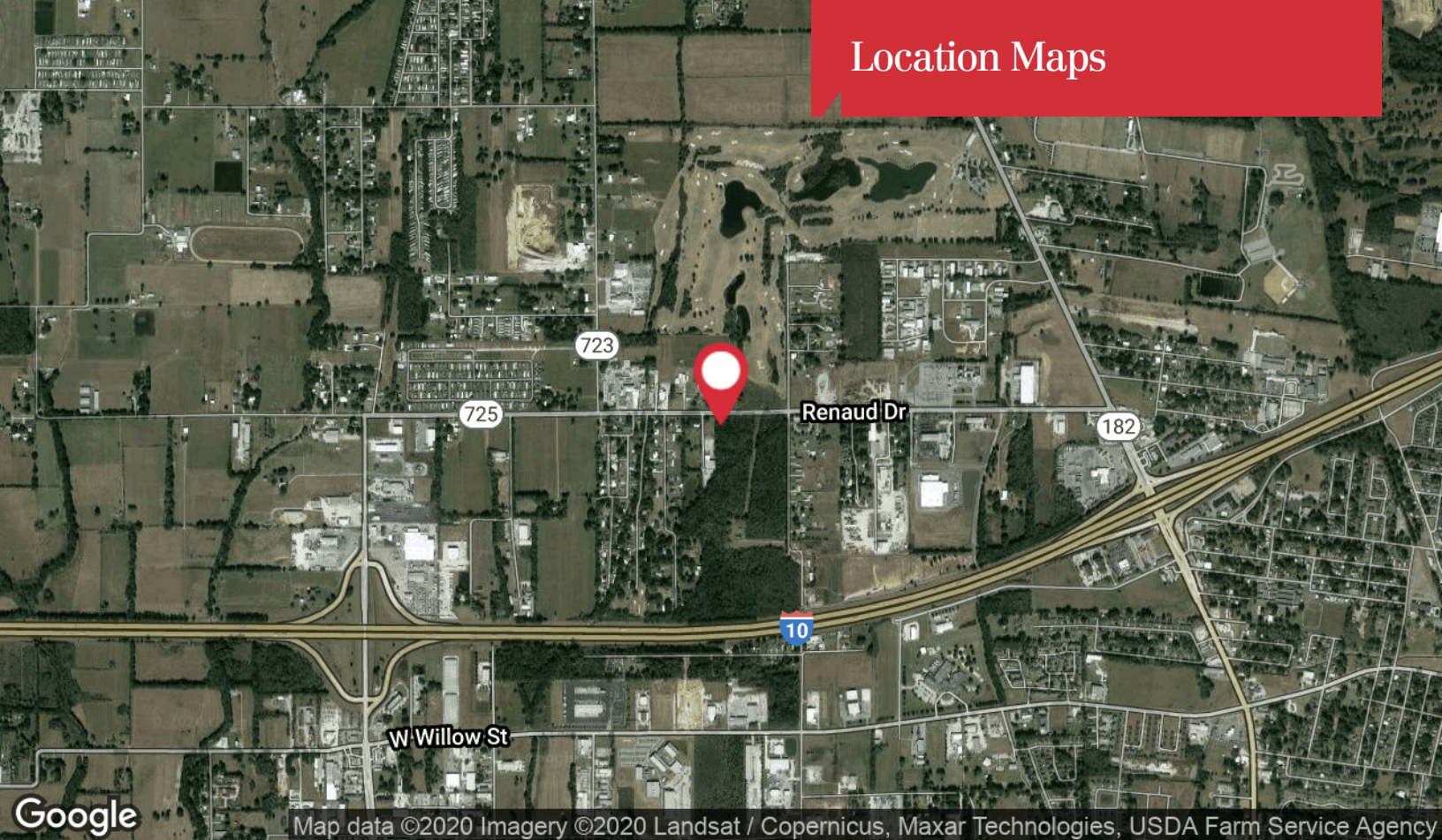


# Additional Photos





# Location Maps



6 Degaulle Square  
Lafayette, LA 70508  
337 233 9541 tel  
[latterblum.com](http://latterblum.com)



## KEY FACTS



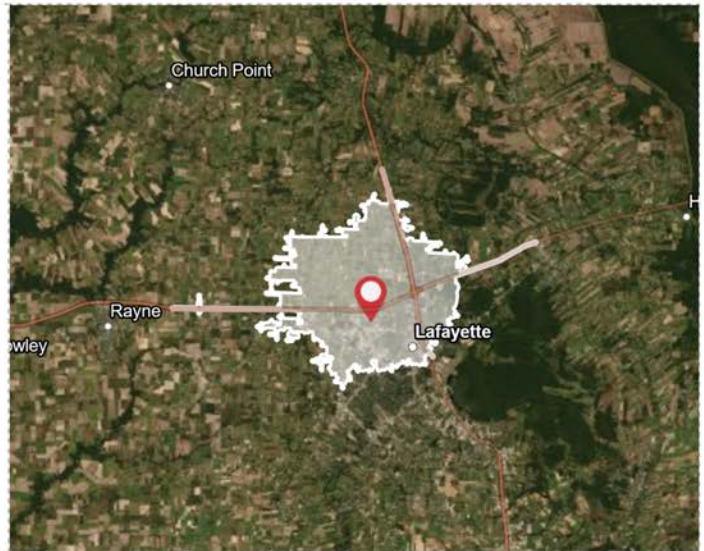
84,663  
Population



33.7  
Median Age



33,256  
Total Households



## BUSINESS



4,838  
Total Businesses



56,374  
Total Employees

## INCOME



\$21,323  
Median Net Worth



\$55,229  
Average Household  
Income

## EDUCATION



16%  
No High School Diploma



33%  
High School Graduate



26%  
Some College



25%  
Bachelor's/Grad/Prof  
Degree

## EMPLOYMENT



55%  
White Collar



24%  
Blue Collar



21%  
Services



19.1%  
Unemployment Rate

10 Minute Drive Time