

MALIBU HILLS EXECUTIVE CENTER

26745 - 26775 Malibu Hills Road | Calabasas, CA

VIRTUAL TOURS



MICHAEL SLATER
Lic. 01050876
+1 805 288 4710
Michael.slater@cbre.com

TOM DWYER
Lic. 01197938
+1 805 288 4711
Tom.dwyer@cbre.com

CAROLINE BIGELOW
Lic. 01177185
+1 805 288 4712
Caroline.bigelow@cbre.com

MASON GRAY
Lic. 02035347
+1 805 288 4716
Mason.gray@cbre.com



CBRE

PROPERTY HIGHLIGHTS

- Class A office space
- Great location in Calabasas
- Above market parking ratio – 4.6/1,000 USF
- Multiple nearby amenities
- Excellent access to Ventura (101) freeway
- Neighbors include:
 - On Assignment
 - Pepperdine University
 - Cheesecake Factory
 - Alcatel Networks
- Fiber provided by AT&T
- Extensive window line

PROPERTY DETAILS

Current Availability

<u>SUITE</u>	<u>SIZE</u>	<u>COMMENTS</u>	<u>AVAILABILITY</u>
26745 - #100	18,148 RSF	Div. to 9,000 sf	60 days
26775 - #180	4,520 RSF		Immediate
26775 - #200	16,956 RSF	Div. to 8,802 sf	30 days

- Asking Rate: \$2.45 / RSF
- Lease Type: Full Service Gross
- OPEX: Base Year
- Term: 3 – 10 years
- Improvements: Negotiable



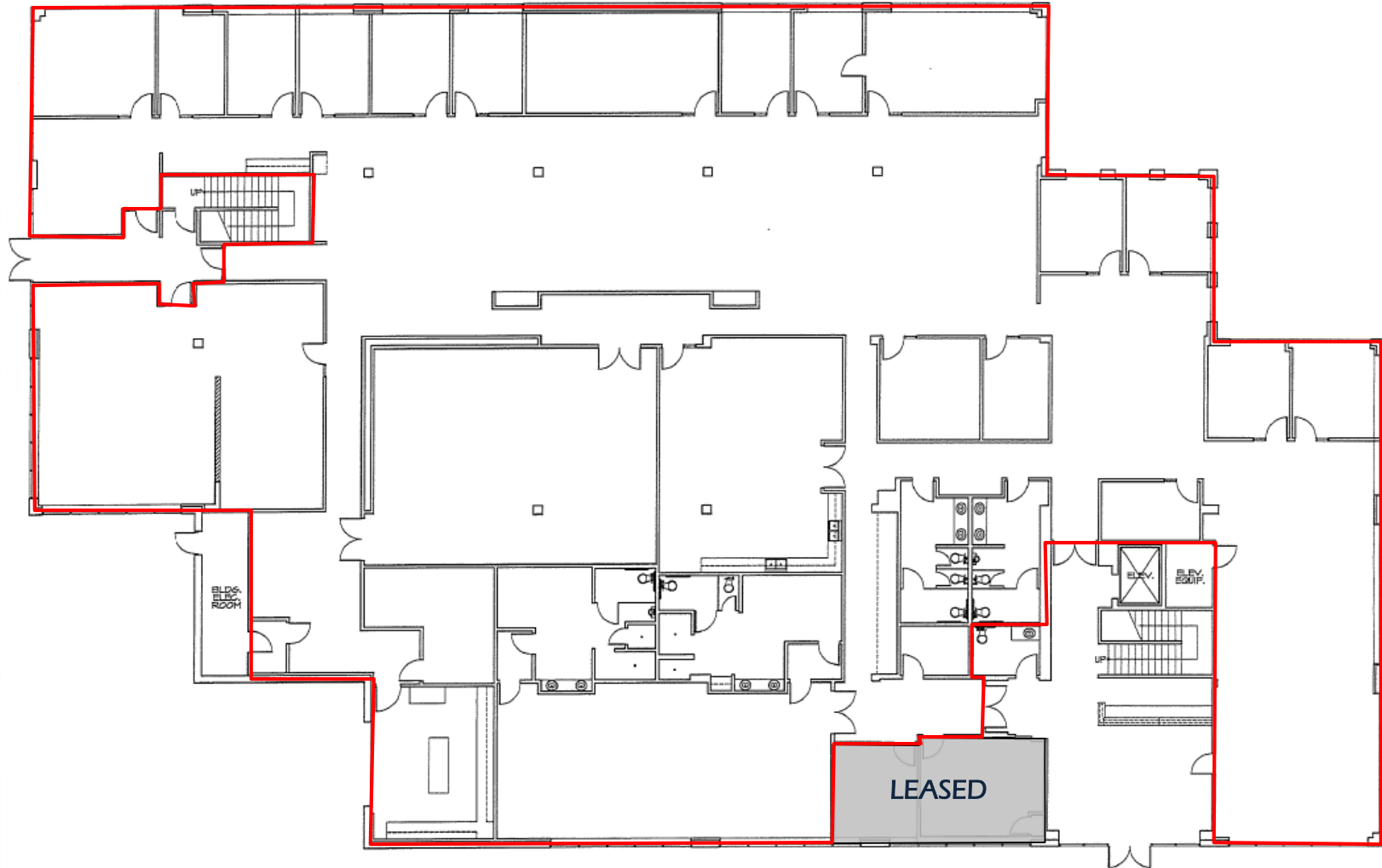
FLOOR PLANS

MALIBU HILLS EXECUTIVE CENTER

26745 MALIBU HILLS ROAD
SUITE 100 | 18,148 RSF
DIVISIBLE TO APPROXIMATELY HALF

PLANS by CBRE
[Click here for a 3D Tour](#)

[TAKE A TOUR](#)



FLOOR PLANS

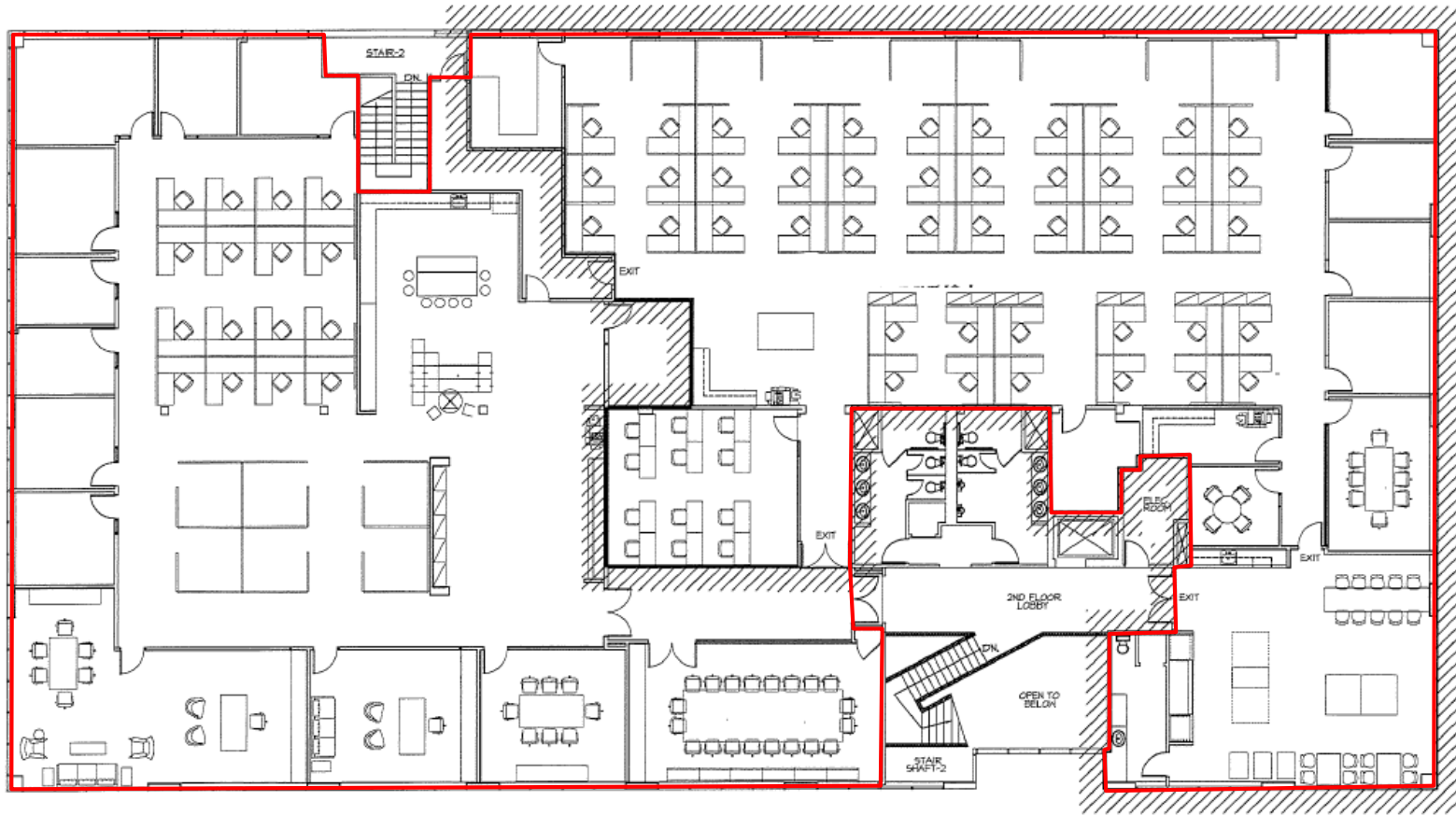
MALIBU HILLS EXECUTIVE CENTER

26775 MALIBU HILLS ROAD
SUITE 200 | 16,956 RSF
DIVISIBLE TO 8,802 SF

PLANS by CBRE

[Click here for a 3D Tour](#)

[TAKE A TOUR](#)







© 2020 CBRE, Inc. All rights reserved. This information has been obtained from sources believed reliable, but has not been verified for accuracy or completeness. You should conduct a careful, independent investigation of the property and verify all information. Any reliance on this information is solely at your own risk. CBRE and the CBRE logo are service marks of CBRE, Inc. All other marks displayed on this document are the property of their respective owners, and the use of such logos does not imply any affiliation with or endorsement of CBRE. Photos herein are the property of their respective owners. Use of these images without the express written consent of the owner is prohibited.