

CLASS "A" OFFICE/R&D SPACE  
±50,500 square feet

SANTA CLARA, CALIFORNIA

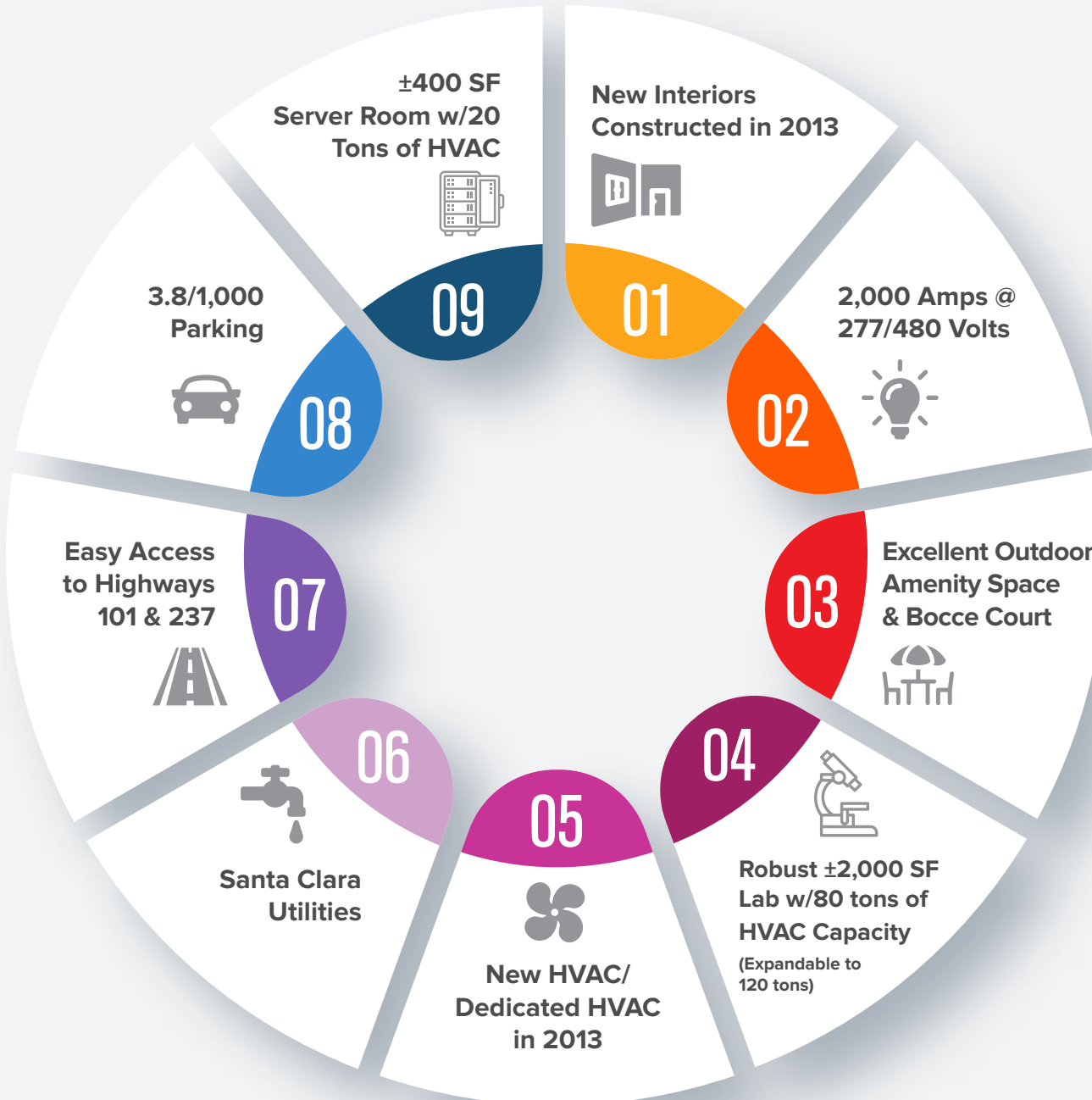


2929  
patrick  
henry

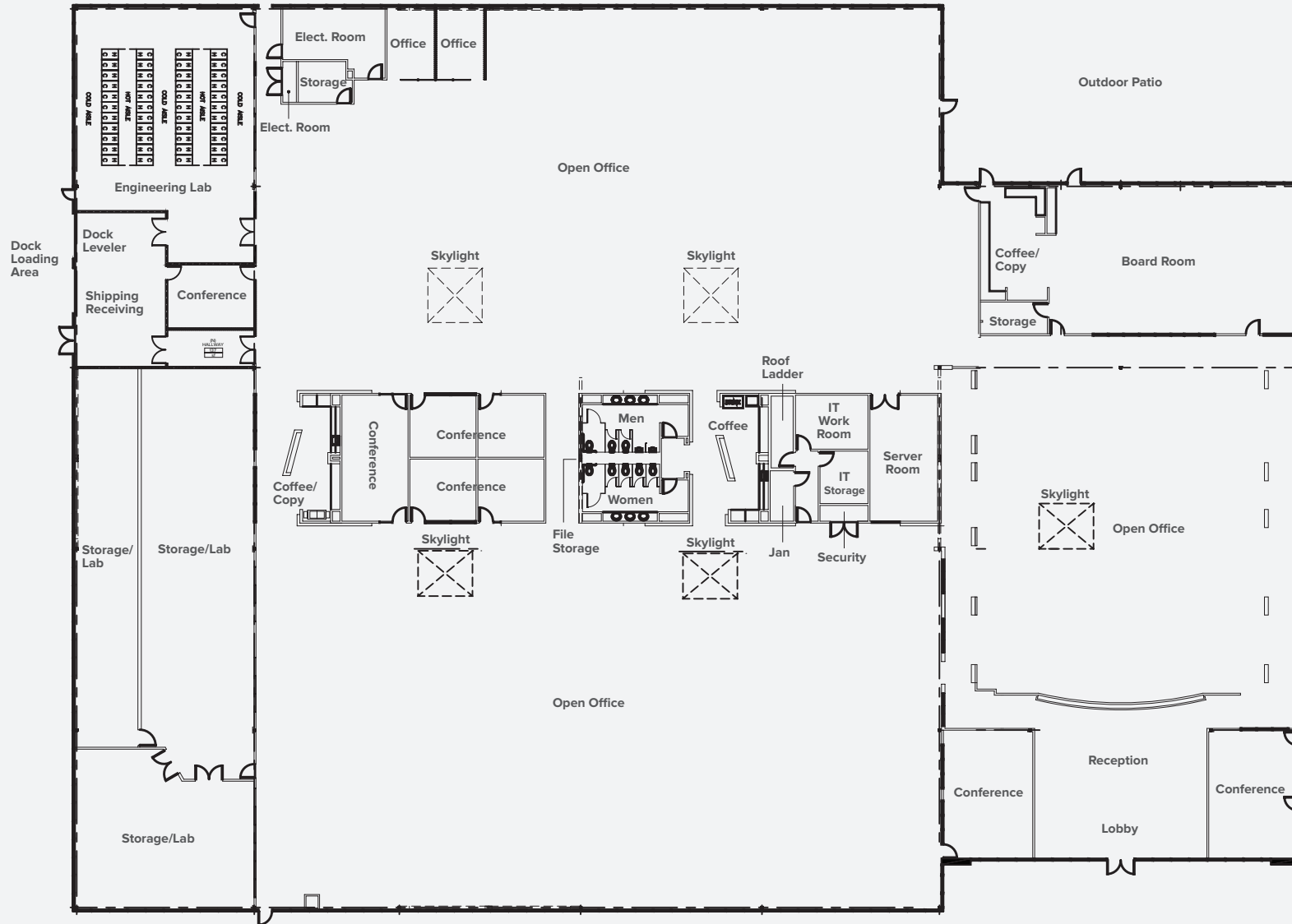
NEWMARK

**JOE KELLY**  
Executive Managing Director  
408.987.4111 | [joe.kelly@ngkf.com](mailto:joe.kelly@ngkf.com)  
CA RE License #01420963

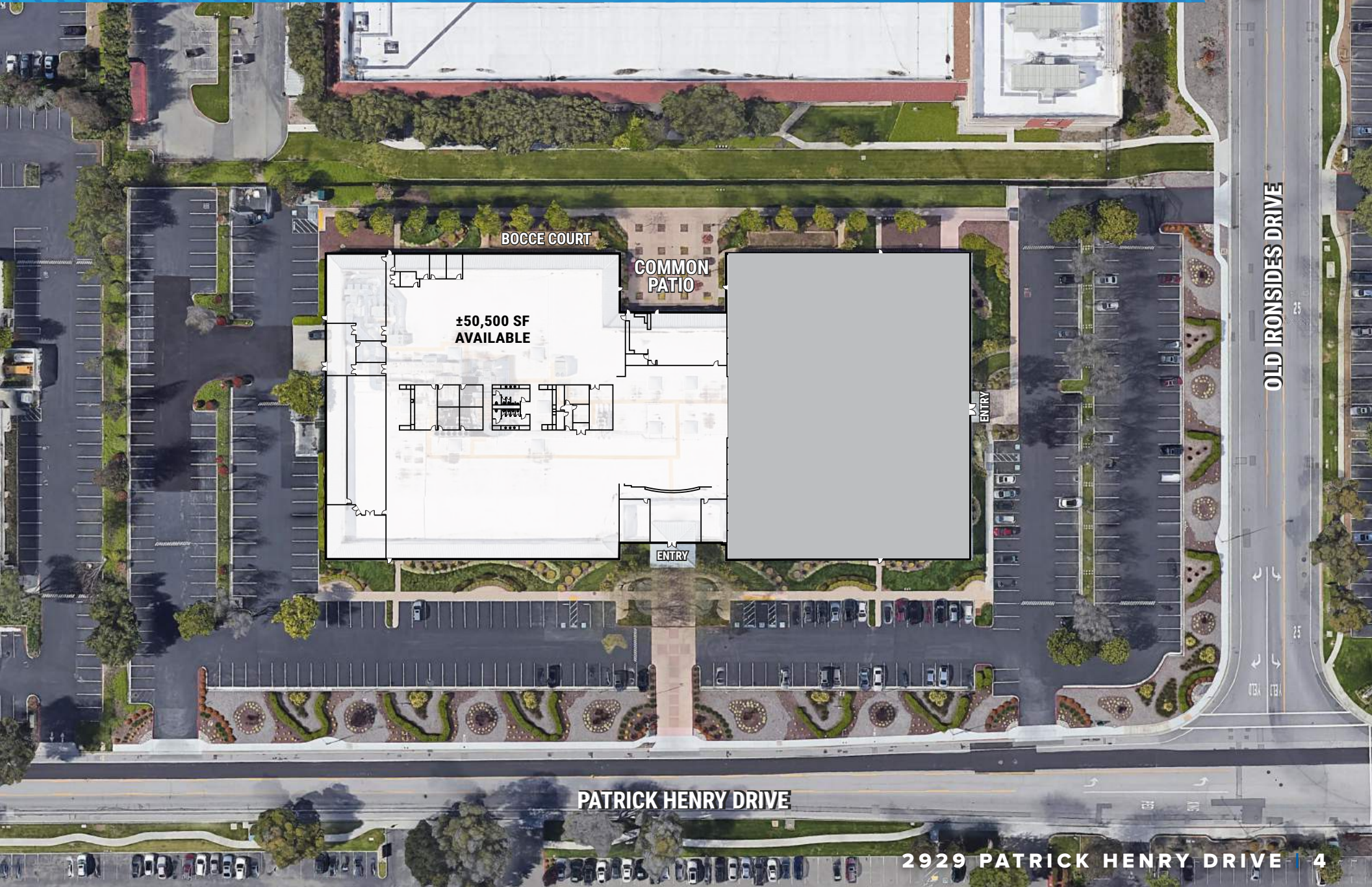
# BUILDING HIGHLIGHTS



# EXISTING BUILD OUT FLOOR PLAN



# EXISTING SITE PLAN



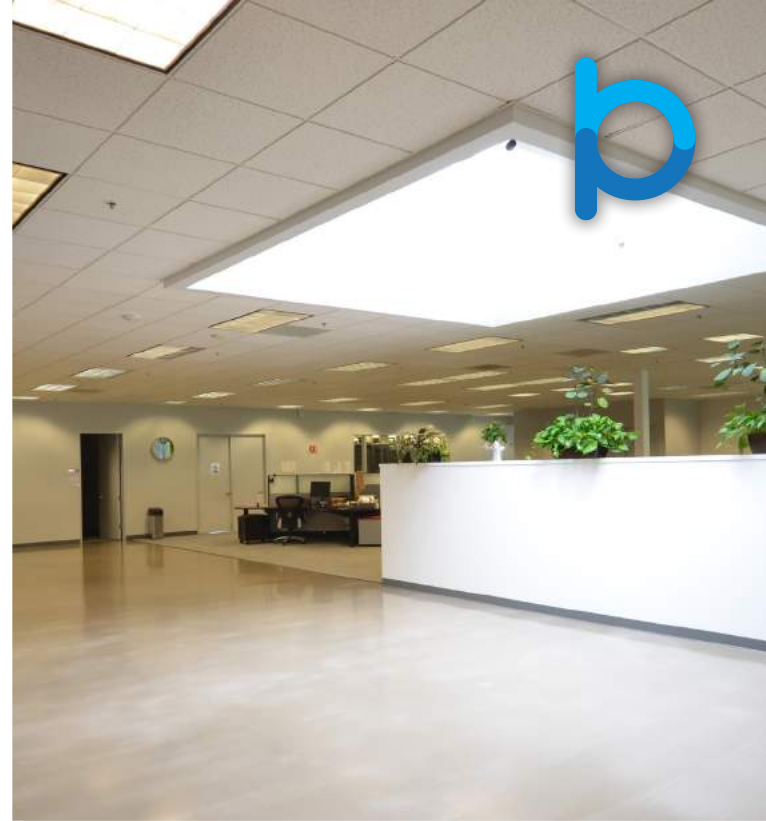
PATRICK HENRY DRIVE

OLD IRONSIDES DRIVE

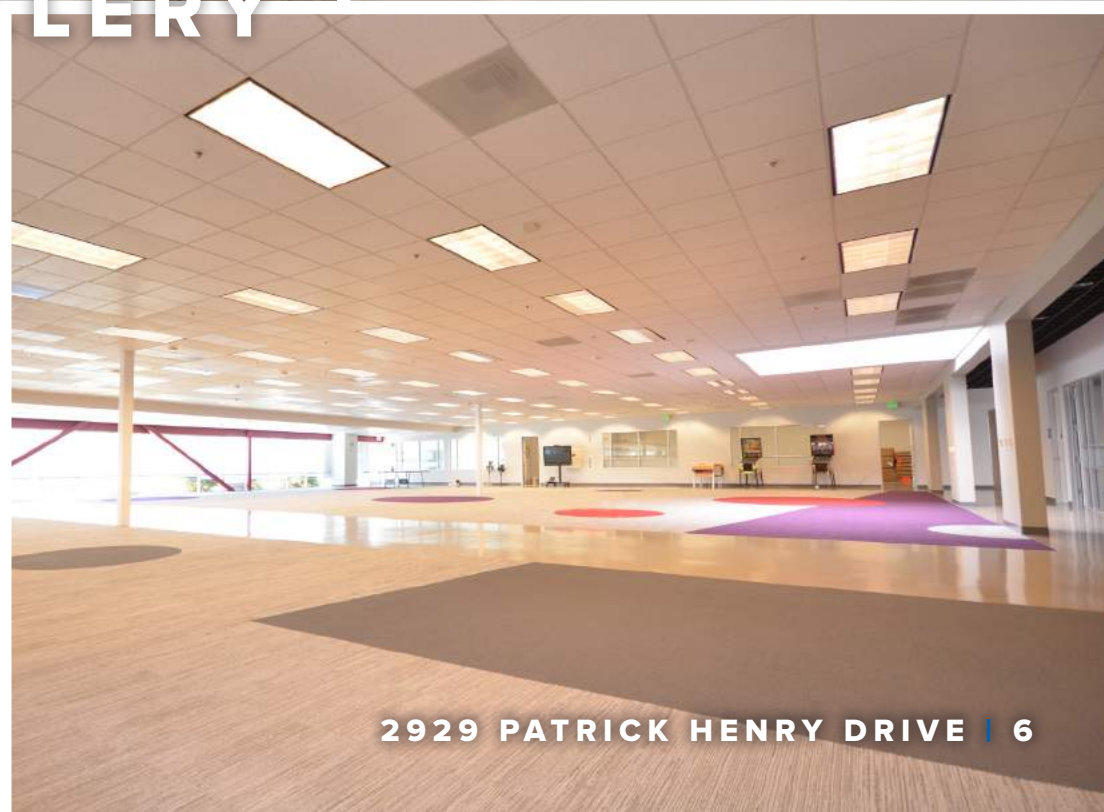


# GALLERY





# GALLERY



# WALKING DISTANCE AMENITIES MAP



TASMAN DRIVE

GREAT AMERICA PARKWAY



OUTDOOR  
AMENITY AREA



Hyatt and Hilton Hotels



Santa Clara  
Convention Center



Future Mission Point  
Mixed Use Project



Related Santa Clara -  
Mixed Use Project



VTA Light Rail Stations



Retail Center



2929  
patrick  
henry

**JOE KELLY**

Executive Managing Director

408.987.4111 | [joe.kelly@ngkf.com](mailto:joe.kelly@ngkf.com)

CA RE License #01420963

**NEWMARK**

The distributor of this communication is performing acts for which a real estate license is required. The information contained herein has been obtained from sources deemed reliable but has not been verified and no guarantee, warranty or representation, either express or implied, is made with respect to such information. Terms of sale or lease and availability are subject to change or withdrawal without notice. 19-0893 • 05/20