

FOR LEASE

## La Mesa Medical Center

8875 La Mesa Blvd/5110 Garfield Street  
La Mesa, Ca 91941

# Voit

REAL ESTATE SERVICES



### FEATURES

- Only 2 Suites Remaining
- Immediate Occupancy
- 950 SF Medical/Dental
- 1,458 SF Fully Improved Medical Suite
- Close Proximity to I-8, CA-125, Grossmont Hospital and Grossmont Shopping Center
- On-Site Pharmacy | Ample Parking
- Many Building Improvements Recently Completed

### LEASE RATE

Only \$1.75/SF Modified Gross

#### Stephen Dok

Vice President/Healthcare Practice Group

Lic #01019216

858.453.3303

sdok@voitco.com

### AVAILABILITY

Single Story Freestanding Building 3,852 RSF





FOR LEASE

## La Mesa Medical Center

8875 La Mesa Blvd/5110 Garfield Street  
La Mesa, Ca 91941

AERIAL VIEW



**Stephen Dok**  
Vice President/Healthcare Practice Group  
Lic #01019216  
858.453.3303  
sdok@voitco.com

**Voit**  
REAL ESTATE SERVICES

4370 La Jolla Village Dr., Suite 990, San Diego, CA 92122 • 858.453.0505 • 858.453.1981 Fax • Lic #01333376 | www.voitco.com

The information contained herein has been obtained from sources we deem reliable. While we have no reason to doubt its accuracy, we do not guarantee it.  
©2010 Voit Real Estate Services, Inc. All Rights Reserved. Real People. Real Solutions.™ is a trademark of Voit Real Estate Services.

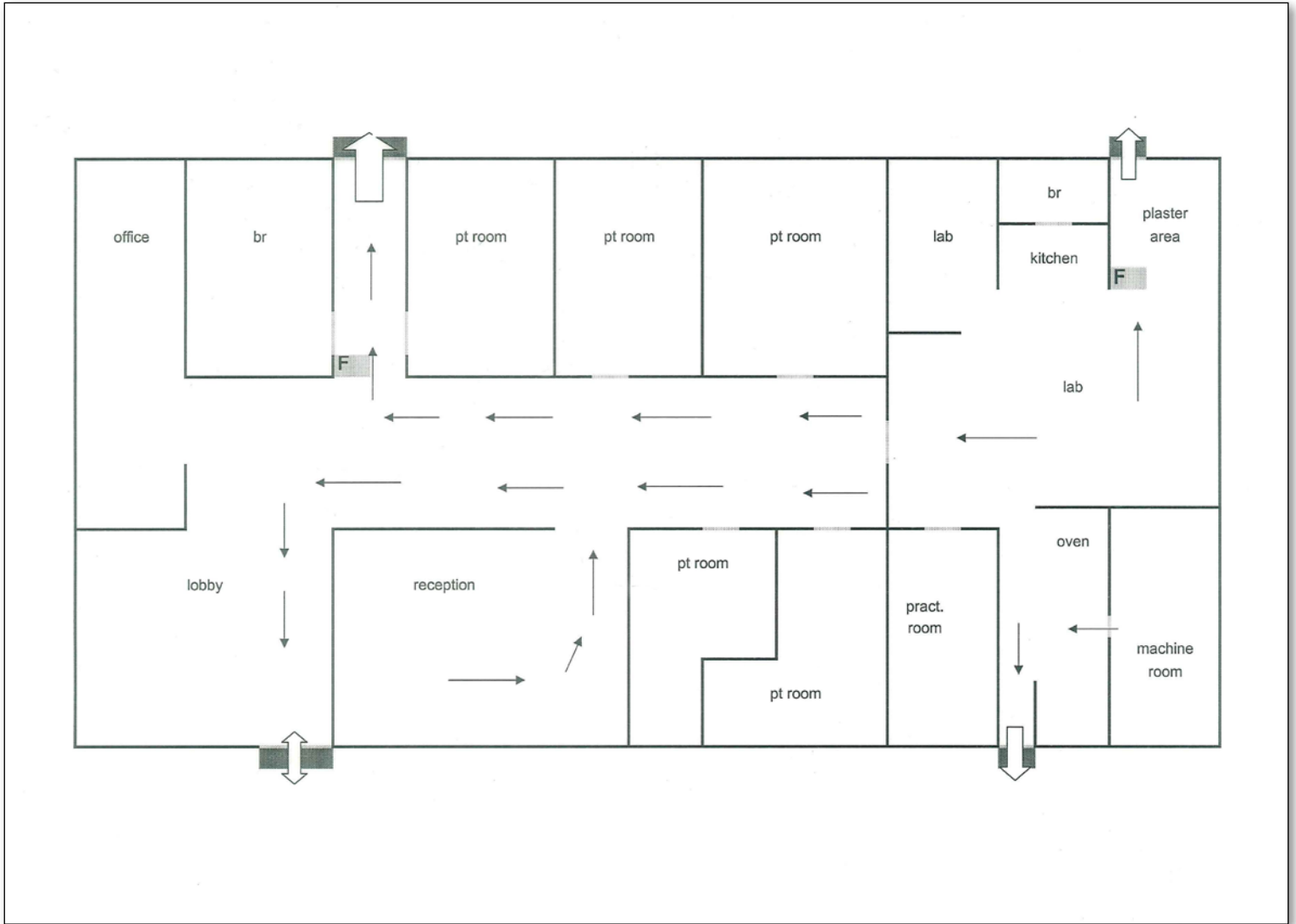
**CORFAC**  
International

FOR LEASE

# La Mesa Medical Center

8875 La Mesa Blvd/5110 Garfield Street  
La Mesa, Ca 91941

## AERIAL VIEW



**Stephen Dok**  
Vice President/Healthcare Practice Group  
Lic #01019216  
858.453.3303  
sdok@voitco.com

**Voit**  
REAL ESTATE SERVICES

4370 La Jolla Village Dr., Suite 990, San Diego, CA 92122 • 858.453.0505 • 858.453.1981 Fax • Lic #01333376 | www.voitco.com