

640 South McDonough St.

**\$890 / Month**

**Full Service - Utilities Included - Downtown**

AVAILABLE — +/-850 SF—2,002 SF

VISIBILITY — EXCELLENT

PARKING — ON-SITE & AMPLE

ZONING — SMART CODE

BUILDING SIZE— 8,340 SF +/-

LOCATED ON ONE OF MAIN ACCESS  
POINTS INTO DOWNTOWN

TO RECEIVE ADDITION INFORMATION CONTACT:

**NEAL BRIGHT**

334.324.3000

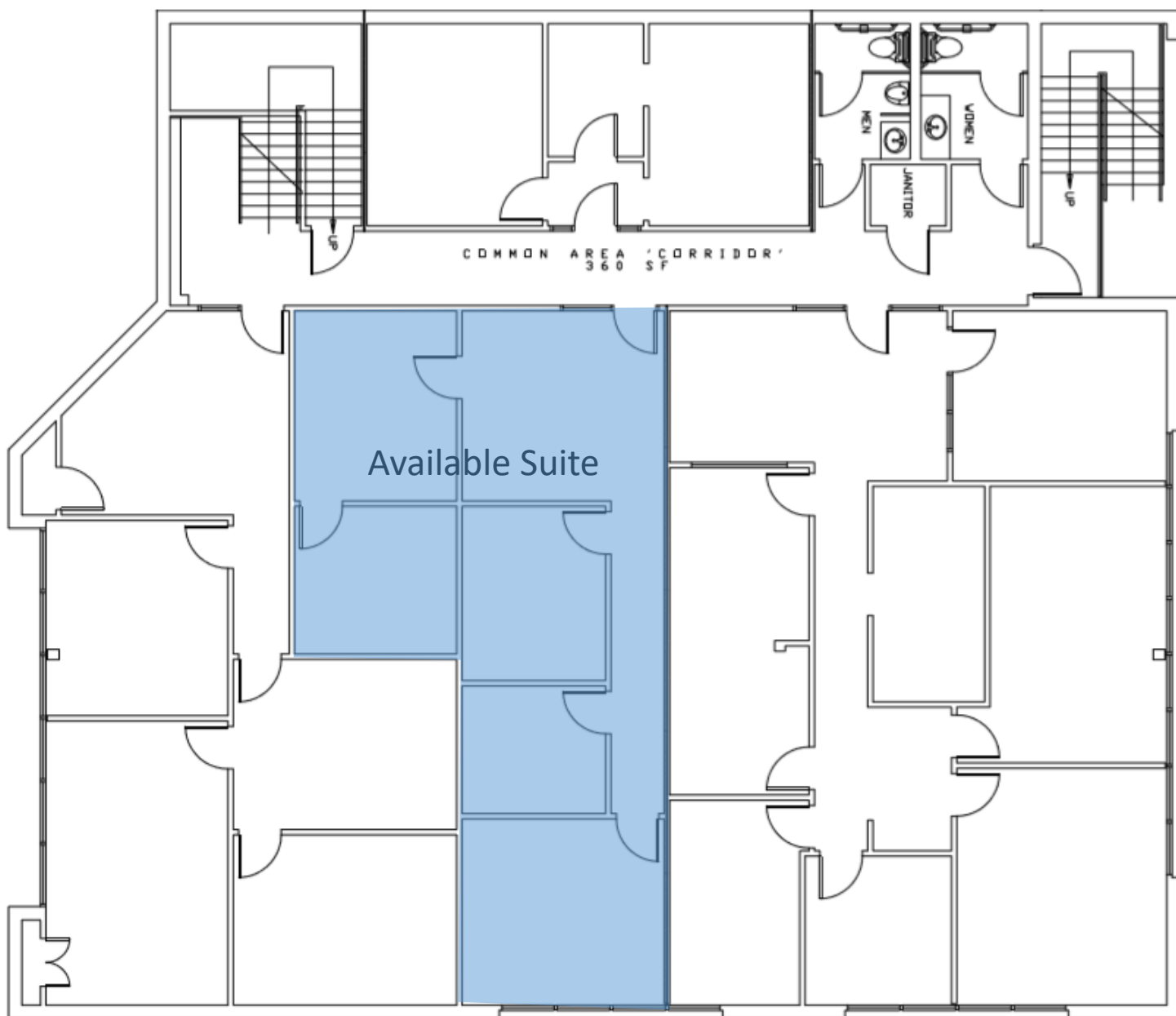
NEAL@PARTNERSREALTY.INFO

12 W. JEFFERSON ST.

MONTGOMERY, AL 36104



SURROUNDING AREA INCLUDES THE MONTGOMERY CENTRAL BUSINESS DISTRICT, PROFESSIONAL AND GOVERNMENT OFFICES, EXCELLENT DINING AND SHOPPING OPTIONS, AND 3 MILES FROM MAXWELL AIR FORCE BASE.



**NEAL BRIGHT**

334.324.3000

NEAL@PARTNERSREALTY.INFO

ALL INFORMATION IS FROM SOURCES DEEMED RELIABLE, BUT NO WARRANTY IS MADE AS TO THE ACCURACY THEREOF AND SAME IS SUBMITTED SUBJECT TO ERRORS, OMISSIONS, CHANGE OF PRICE, OR OTHER CONDITIONS, SUCH AS PRIOR SALES OR WITHDRAWAL WITHOUT NOTICE BY PARTNERS REALTY OR THE LANDLORD.