



**1910-1920 Camden Ave.
San Jose, CA 95124**

**RETAIL PAD AND ENDCAP FOR LEASE
CAMDEN AVENUE LOCATION**



PROPERTY INFORMATION:

- 2,100± SF Pad Building
- 1,100± SF End Cap Retail Space Directly on Camden Avenue
- Upstairs Office Available –Inquire w/ Agent
- Contact Agent for Pricing
- Down The Street From The Cambrian Plaza Retail Redevelopment
- High Visibility, High Traffic Location
- Camden Ave—30,000 ADT



MEACHAM/OPPENHEIMER, INC.
CORFAC INTERNATIONAL
8 No. San Pedro St., Suite 300
San Jose, California 95110
Tel: 408.378.5900
Fax: 408.378.5903
www.moinc.net

FOR FURTHER INFORMATION CONTACT:

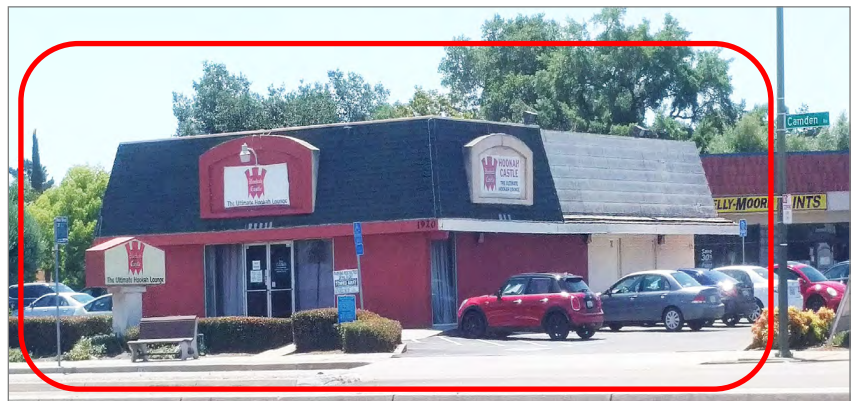
David Taxin
Lic. #00983163
dtaxin@moinc.net
(408) 477-2508
(408) 378-5900

1910—1920 CAMDEN AVENUE • SAN JOSE, CALIFORNIA 95124



Upstairs Office Space

1,100± SF on Camden Avenue

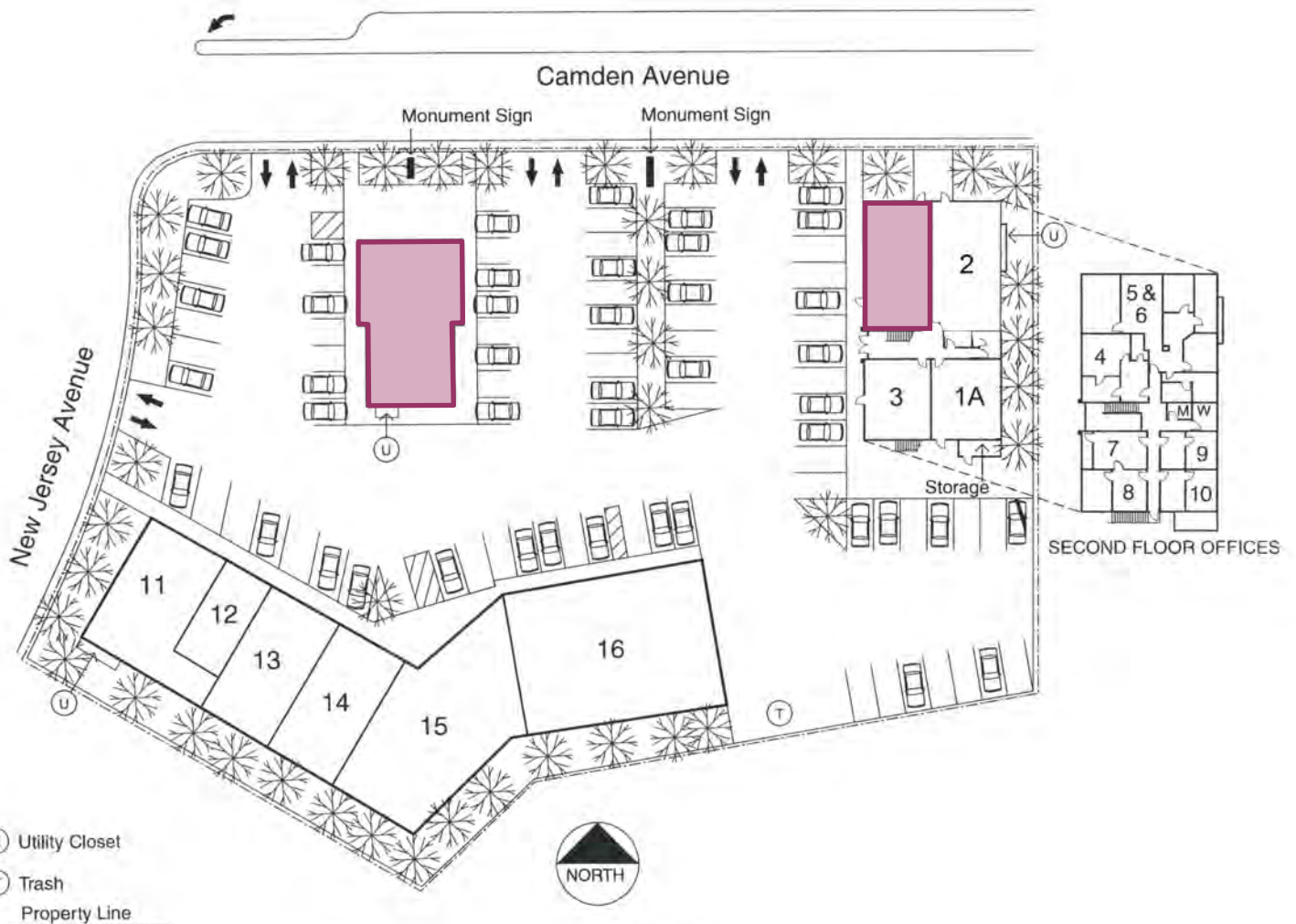


2,100± SF Pad on Camden Avenue

MEACHAM/OPPENHEIMER, INC.
CORFAC INTERNATIONAL
8 No. San Pedro St., Suite 300
San Jose, California 95110
Tel: 408.378.5900
www.moinc.net

David Taxin
Lic. #00983163
dtaxin@moinc.net
(408) 477-2508

1910—1920 CAMDEN AVENUE • SAN JOSE, CALIFORNIA 95124



rev 10/24/2006

MEACHAM/OPPENHEIMER, INC.
CORFAC INTERNATIONAL
8 No. San Pedro St., Suite 300
San Jose, California 95110
Tel: 408.378.5900
www.moinc.net

David Taxin
Lic. #00983163
dtaxin@moinc.net
(408) 477-2508

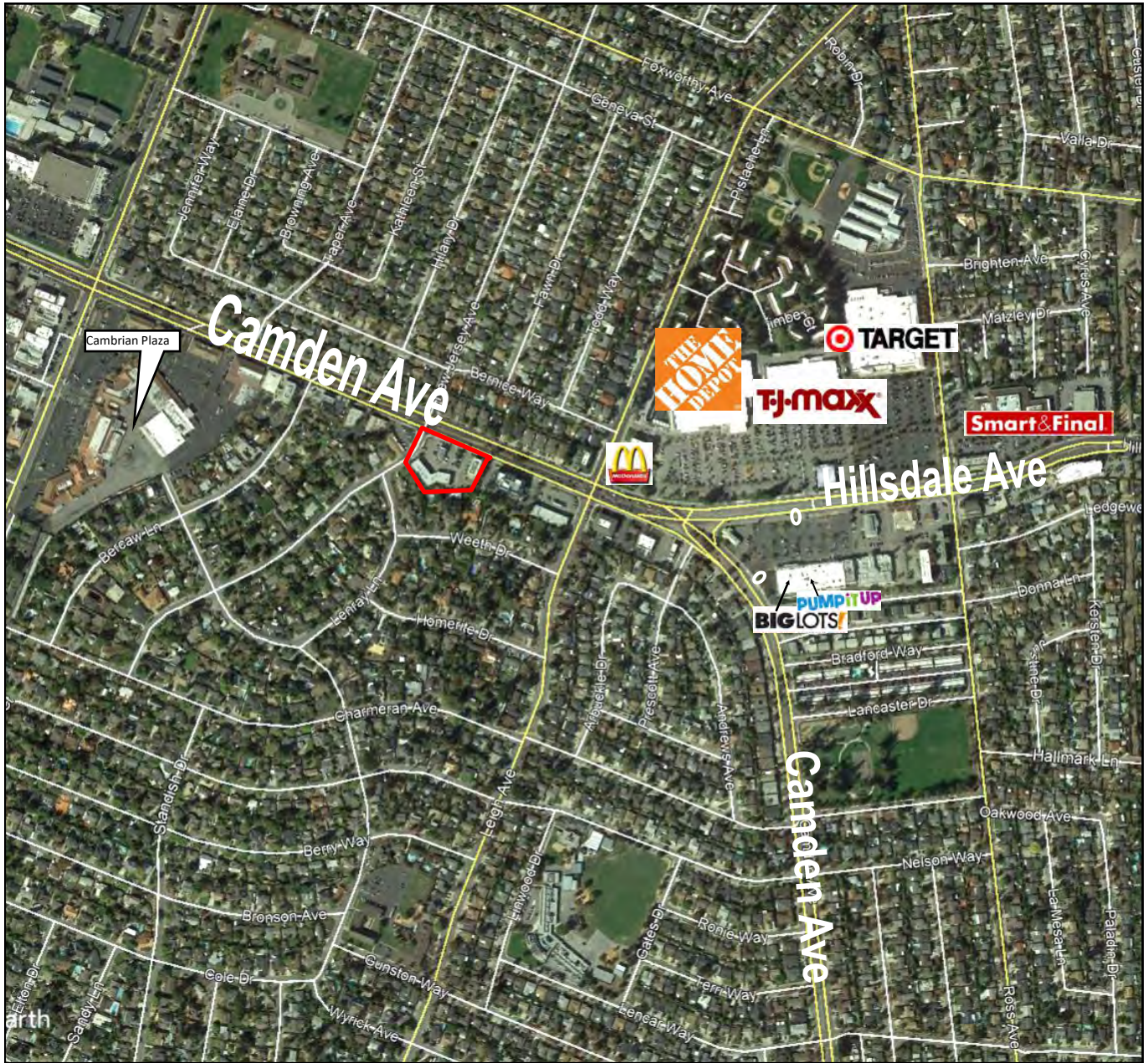
1910—1920 CAMDEN AVENUE • SAN JOSE, CALIFORNIA 95124



MEACHAM/OPPENHEIMER, INC.
CORFAC INTERNATIONAL
8 No. San Pedro St., Suite 300
San Jose, California 95110
Tel: 408.378.5900
www.moinc.net

David Taxin
Lic. #00983163
dtaxin@moinc.net
(408) 477-2508

1910—1920 CAMDEN AVENUE • SAN JOSE, CALIFORNIA 95124



ESTIMATED DEMOGRAPHICS:

	<u>1 MILE</u>	<u>3 MILES</u>	<u>5 MILES</u>
POPULATION:	23,967	192,585	492,339
AVG. HH INCOME:	136,080	\$137,104	\$129,735

MEACHAM/OPPENHEIMER, INC.
 CORFAC INTERNATIONAL
 8 No. San Pedro St., Suite 300
 San Jose, California 95110
 Tel: 408.378.5900
 www.moinc.net

David Taxin
 Lic. #00983163
dtaxin@moinc.net
 (408) 477-2508