

Available for Sublease
Prime Office Space



1101 North Kings Highway

Cherry Hill, New Jersey

Property Description

Located across from the Cherry Hill Library, 1101 North Kings Highway is four story office building with suite 209 available for sublease on the second floor. Sublease rate includes all utilities (except phone and internet). Conveniently located to area restaurants, shopping, Route 70 and 73 as well as public transportation. This building features a newly landscaped outdoor seating area, furnished modern lobby and abundant parking.

Current Availability

Suite 209 1,250± SF \$1,458.33/mth

Newly fit out corner suite features ribbon windows and abundant natural light. Move-in ready condition includes reception, large bullpen, conference room, and private office.

Amazing Location!

Within minutes of...

- Both Moorestown & Cherry Hill Malls
- East Gate Shopping Center
- Lifetime Fitness
- Ellisburg Shopping Plaza
- Marketplace at Garden State Park

Sublease Rate

\$14.00 PSF
Full Service

Lease Expiration: 11/30/2019

For more information:

Julie Kronfeld, SIOR

+1 856 234 9600 • julie.kronfeld@naimertz.com

Rebecca Ting, SIOR

+1 856 234 9600 • rebecca.ting@naimertz.com



Reception Area



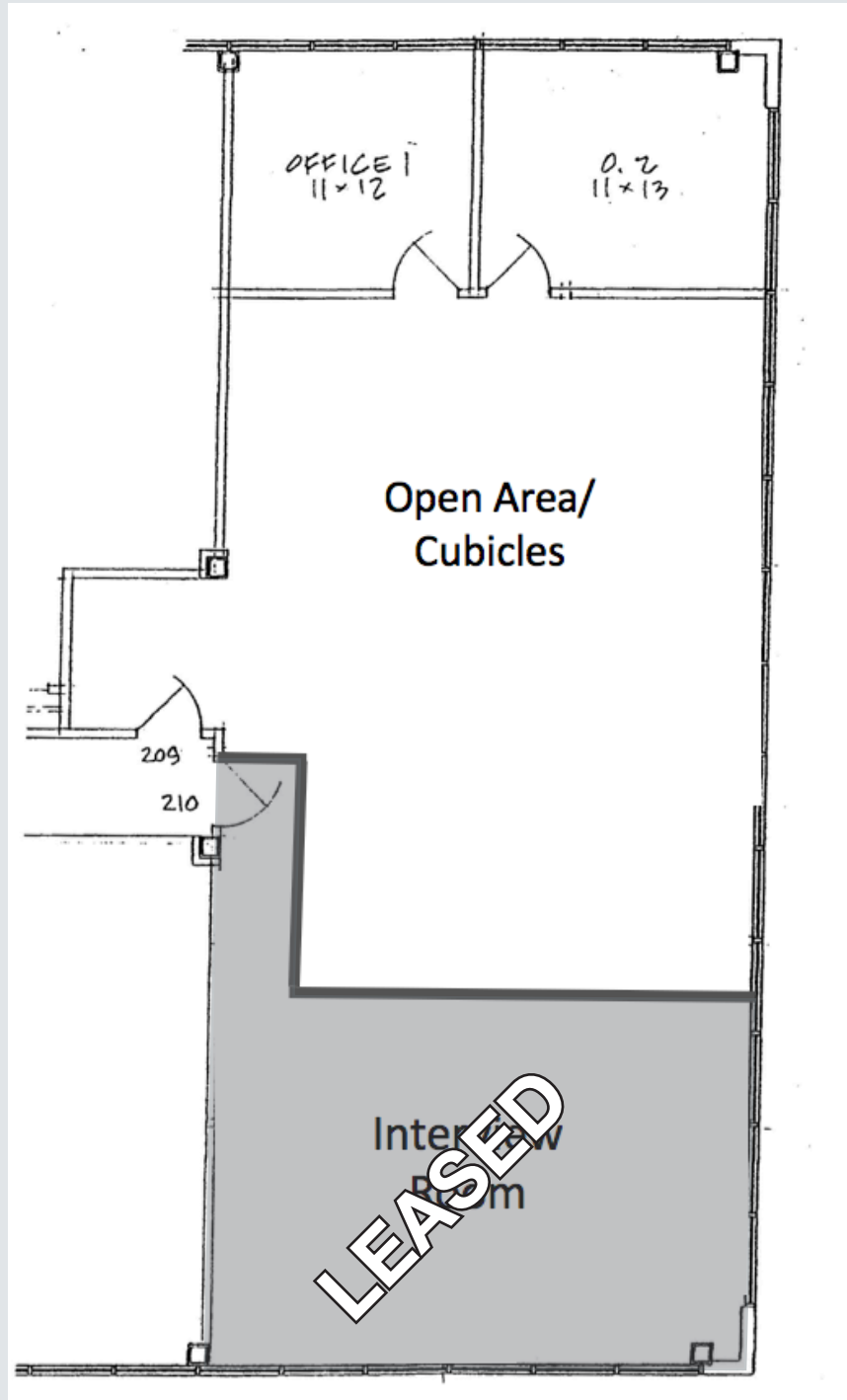
Reception Area



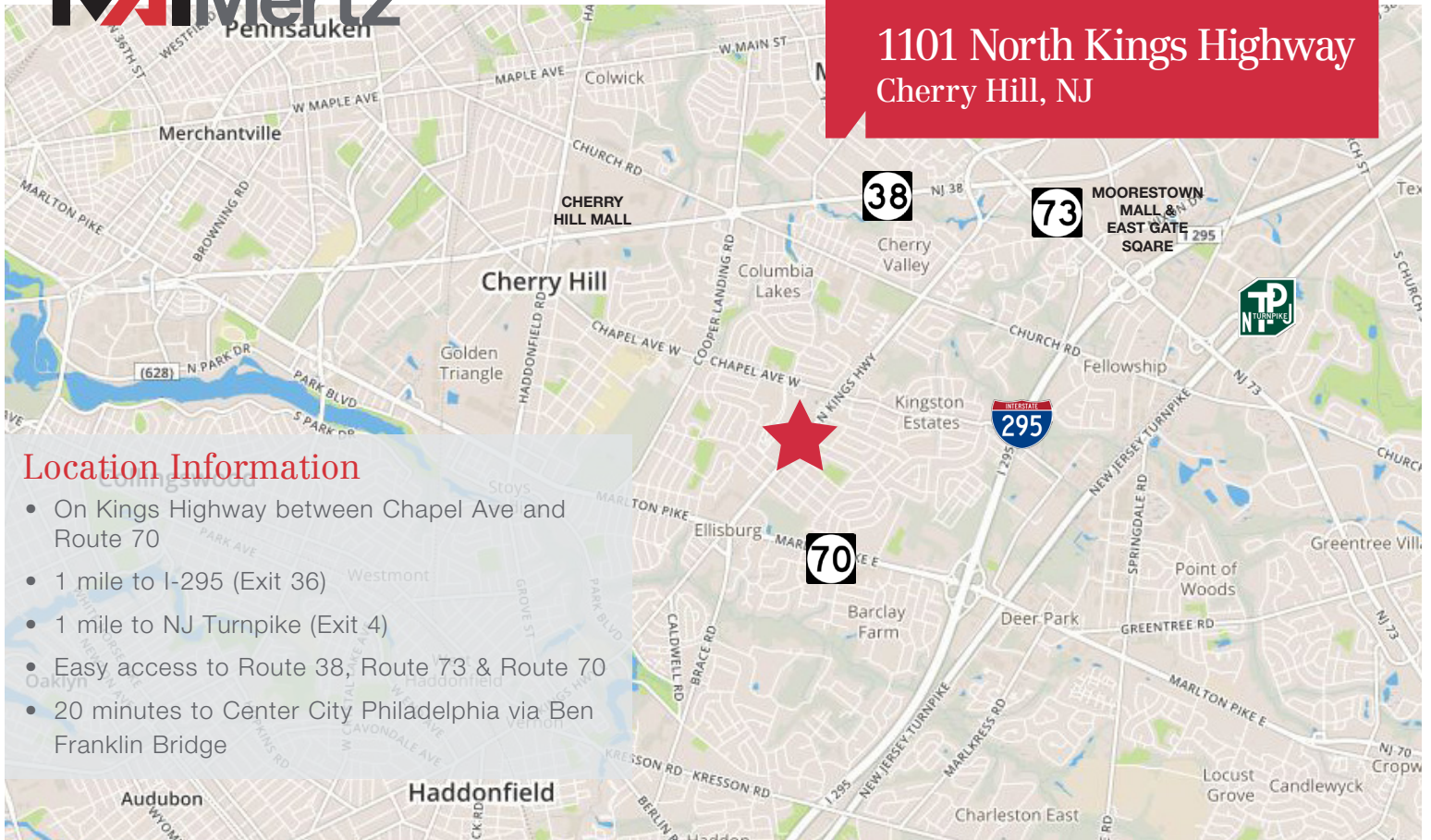
Office



Conference Room



1101 North Kings Highway
Cherry Hill, NJ



Location Information

- On Kings Highway between Chapel Ave and Route 70
- 1 mile to I-295 (Exit 36)
- 1 mile to NJ Turnpike (Exit 4)
- Easy access to Route 38, Route 73 & Route 70
- 20 minutes to Center City Philadelphia via Ben Franklin Bridge



NO WARRANTY OR REPRESENTATION, EXPRESS OR IMPLIED, IS MADE AS TO THE ACCURACY OF THE INFORMATION CONTAINED HEREIN, AND THE SAME IS SUBMITTED SUBJECT TO ERRORS, OMISSIONS, CHANGE OF PRICE, RENTAL OR OTHER CONDITIONS, PRIOR SALE, LEASE OR FINANCING, OR WITHDRAWAL WITHOUT NOTICE, AND OF ANY SPECIAL LISTING CONDITIONS IMPOSED BY OUR PRINCIPALS NO WARRANTIES OR REPRESENTATIONS ARE MADE AS TO THE CONDITION OF THE PROPERTY OR ANY HAZARDS CONTAINED THEREIN ARE ANY TO BE IMPLIED.

21 Roland Avenue
Mount Laurel, NJ 08054
+1 856 234 9600

naimertz.com