

# RETAIL SPACE FOR LEASE - 1,000 SF

## HIGHWAY 111 FRONTAGE



**73430 Highway 111, Unit D, Palm Desert**  
*Between San Pablo & Las Palmas Ave.*



**Ready for Beauty Salon / Spa • Highway 111 Frontage & Signage**  
**Central Business District • Well-Established Location**  
**Plenty of Parking • Mountain Views**



www.baxleyproperties.com  
Phone: 760-773-3310  
Fax: 760-773-3013  
73712 Alessandro Drive, Ste B-4, Palm Desert, CA 92260

**Donna Rodriguez**  
donna@baxleyproperties.com  
**760-773-6017**

DRE Lic # 01928453

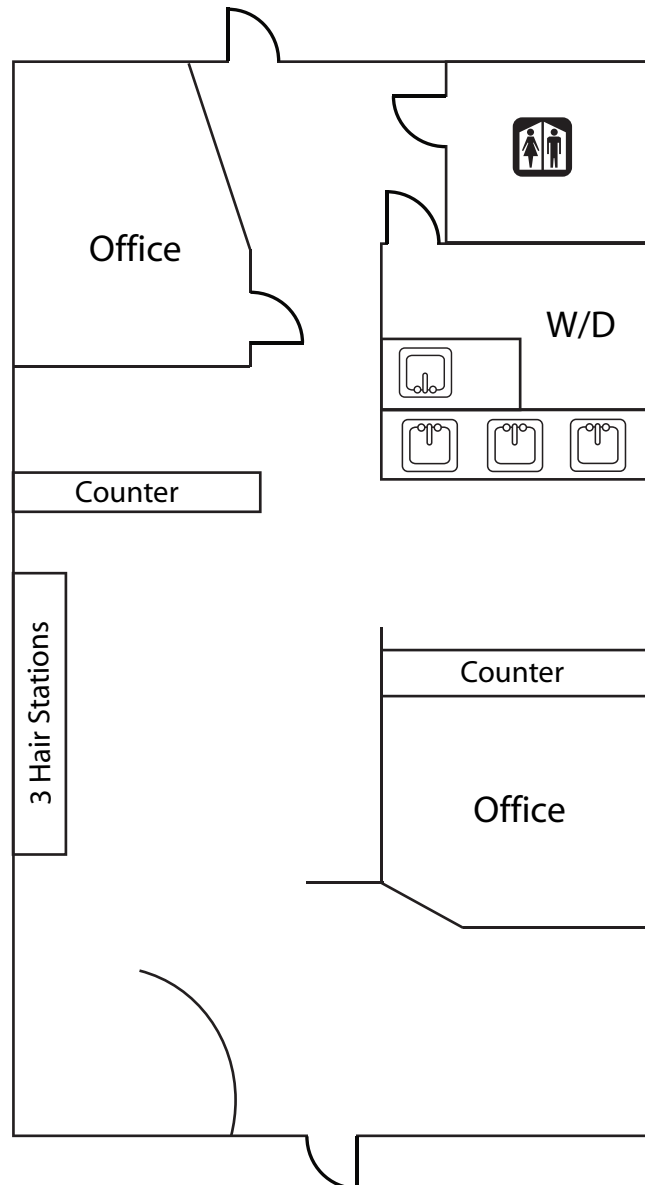
**DISCLAIMER:**

The information above has been obtained from sources believed reliable. While we do not doubt its accuracy, we have not verified it and make no guarantee, warranty or representation about it. It is your responsibility to independently confirm its accuracy and completeness. Any projections, opinions, assumptions or estimates used are for example only, and do not represent the current or future performance of the property.

9/8/2020

# RETAIL SPACE FOR LEASE - 1,000 SF

73430 HIGHWAY 111, UNIT D, PALM DESERT, CA 92260



**DISCLAIMER:**

The information above has been obtained from sources believed reliable. While we do not doubt its accuracy, we have not verified it and make no guarantee, warranty or representation about it. It is your responsibility to independently confirm its accuracy and completeness. Any projections, opinions, assumptions or estimates used are for example only, and do not represent the current or future performance of the property.