

LA JOLLA GALLERIA

7777

FAY AVENUE

9,093 RSF AVAILABLE FOR LEASE



LA JOLLA GALLERIA

7777

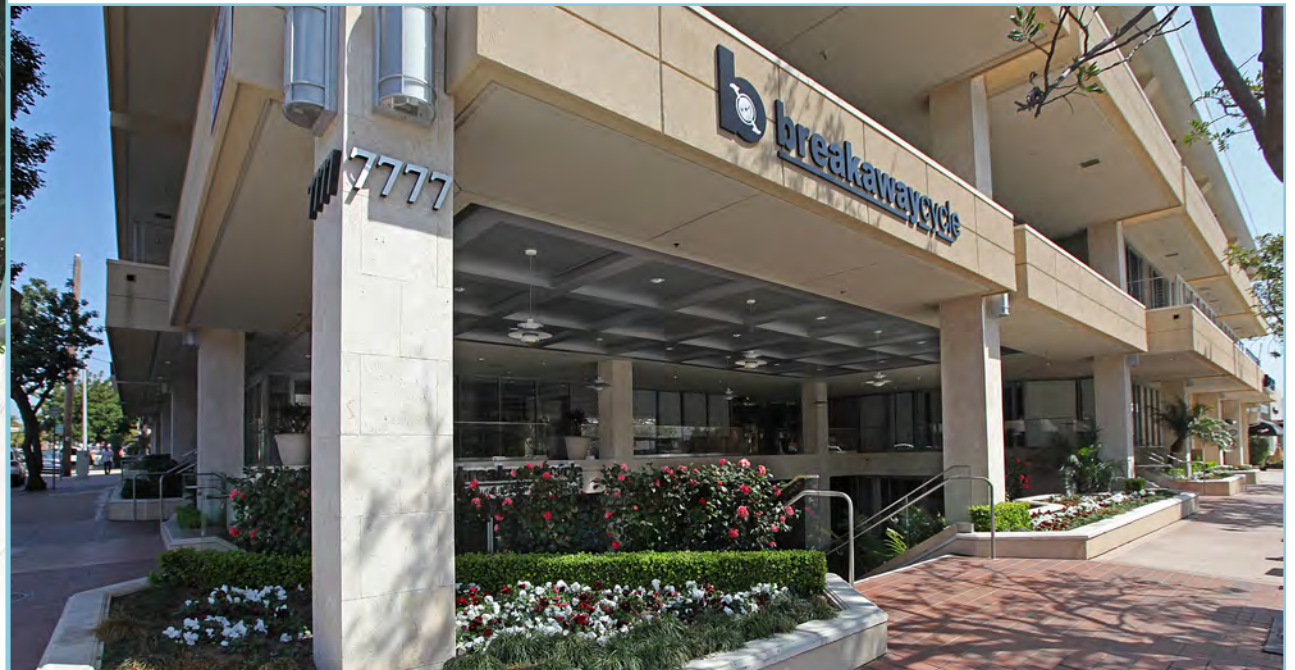
FAY AVENUE

9,093 RSF AVAILABLE FOR LEASE

DIVISIBLE TO 1,295 SF

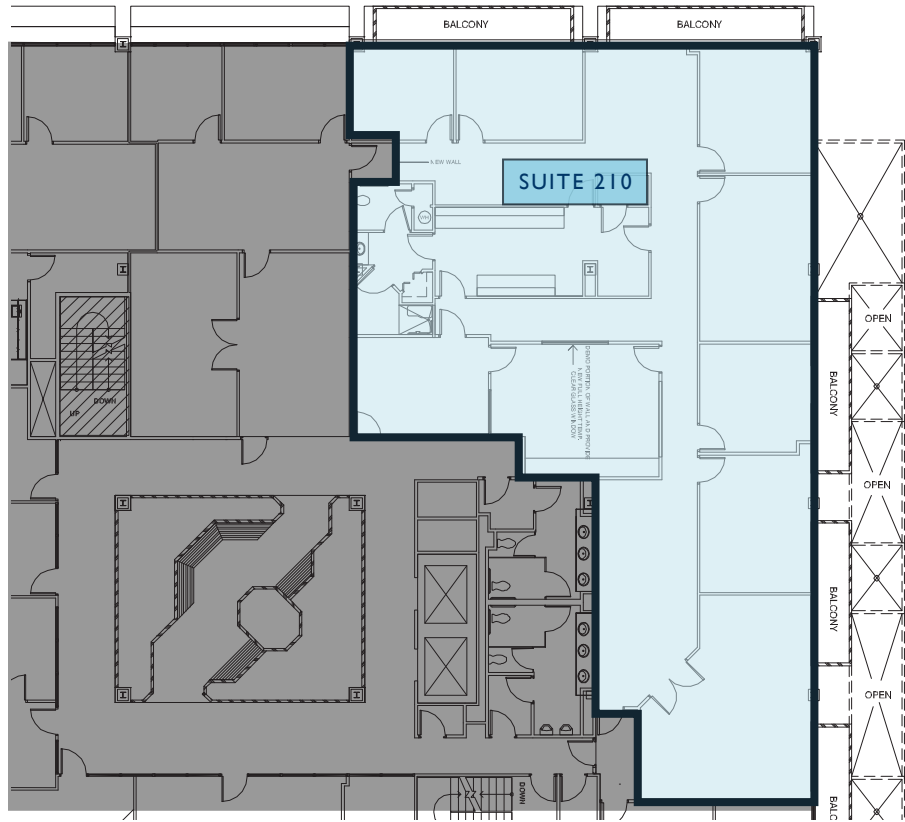
BUILDING AMENITIES

- 4-Story, Class "A" garden office building
- Upgraded space with recent improvements
- Conveniently located in the heart of La Jolla
- 3-level covered and secured parking, offering 192 parking spaces for a 3.5/1,000 SF ratio
- Suites adjacent to landscaped courtyard
- RENTAL RATE: \$3.25 + E



SECOND FLOOR

SUITE 210: 4,295 RSF | 30 Days Notice



THIRD FLOOR

SUITE 305: 1,295 RSF
SUITE 310: 3,185 RSF





LA JOLLA GALLERIA | 7777 FAY AVENUE, LA JOLLA, CALIFORNIA 92037



FOR MORE INFORMATION, PLEASE CALL:

PASCAL AUBRY-DUMAND, CCIM

Associate Director | 858.334.4043 | pascal.aubry-dumand@cushwake.com | CA License No. 1281436

The depiction in the included photograph of any person, entity, sign, logo or property, other than Cushman & Wakefield's (C&W) client and the property offered by C&W, is incidental only, and is not intended to connote any affiliation, connection, association, sponsorship or approval by or between that which is incidentally depicted and C&W or its client.

This listing shall not be deemed an offer to lease, sublease or sell such property; and, in the event of any transaction for such property, no commission shall be earned by or payable to any cooperating broker except if otherwise provided pursuant to the express terms, rates and conditions of C&W's agreement with its principal, if, as and when such commission (if any) is actually received from such principal. (A copy of the rates and conditions referred to above with respect to this property is available upon request.)

Cushman & Wakefield of San Diego, Inc.
CA License No. 01329963
4747 Executive Drive, 9th Floor
San Diego, CA 92121

