

AVAILABLE

3000 KUSTOM DRIVE

KENTON COUNTY :: HEBRON, KY 41048



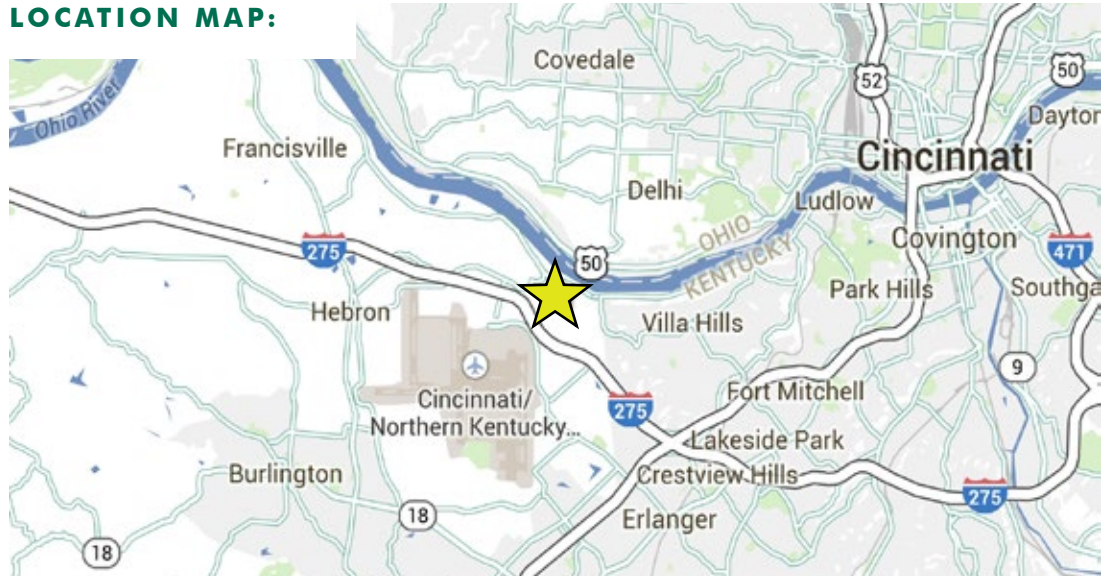
PROPERTY FEATURES:

- 60,000 Sq. Ft. Available
 - 24,689 Sq. Ft. office space
 - 20,779 Sq. Ft. warehouse space
 - 14,537 Sq. Ft. technology space
- Fully Air-conditioned
- 6 Dock doors (2-9'x9' 4-9'x10' w/ 30k lbs levelers) - One Drive-in Door (12'x 16')
- Tilt up concrete panels
- 2007 Construction
- 175 Total Parking spaces (expandable to 48 spaces)
- 8.5 acres
- 24' Clear Height
- 45 x 50 column spacing
- ESRF 50 psi
- 6" non-reinforced concrete slab

PHOTO:



LOCATION MAP:



FOR MORE INFORMATION PLEASE CONTACT
Tim Schenke
Vice President
+1 513 369 1354
tim.schenke@cbre.com

Doug Whitten
Vice President
+1 513 369 1332
doug.whitten@cbre.com



AVAILABLE

3000 KUSTOM DRIVE

KENTON COUNTY :: HEBRON, KY 41048

SITE LOCATION:



FOR MORE
INFORMATION
PLEASE
CONTACT

Tim Schenke
Vice President
+1 513 369 1354
tim.schenke@cbre.com

Doug Whitten
Vice President
+1 513 369 1332
doug.whitten@cbre.com

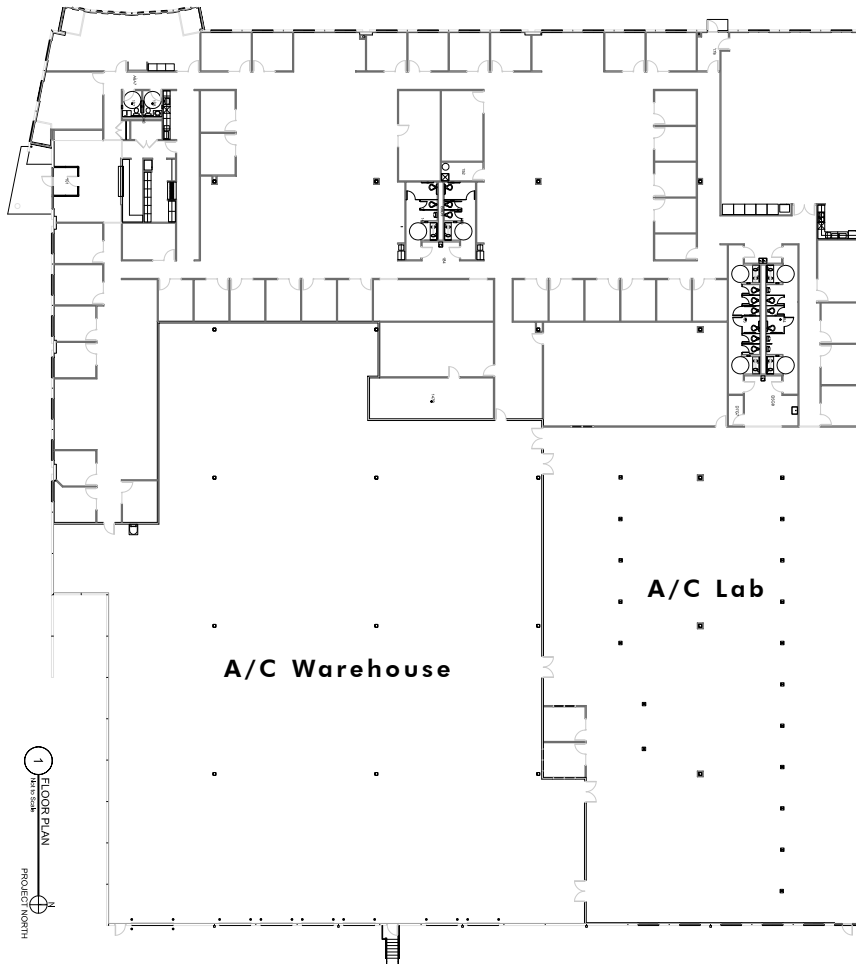
CBRE

AVAILABLE

3000 KUSTOM DRIVE

KENTON COUNTY :: HEBRON, KY 41048

SITE PLAN:



AERIAL:



© 2015 CBRE, Inc. This information has been obtained from sources believed reliable. We have not verified it and make no guarantee, warranty or representation about it. Any projections, opinions, assumptions or estimates used are for example only and do not represent the current or future performance of the property. You and your advisors should conduct a careful, independent investigation of the property to determine to your satisfaction the suitability of the property for your needs. Photos herein are the property of their respective owners and use of these images without the express written consent of the owner is prohibited. CBRE and the CBRE logo are service marks of CBRE, Inc. and/or its affiliated or related companies in the United States and other countries. All other marks displayed on this document are the property of their respective owners.

CBRE