

FOR LEASE > LEASE RATE REDUCED!



KEARNY MESA R&D | OFFICE BUILDING

9596 CHESAPEAKE DRIVE | SAN DIEGO, CA



**4% COMMISSION +
\$10,000 BONUS**

**Expires June 30, 2012
TERM: 3 years or longer**

PROPERTY FEATURES

- > Single story R&D | Office building
- > 3.4/1000 Parking ratio
- > Monument & building signage available
- > Views

ACCESS

- > Excellent highway 52 and Interstate 15

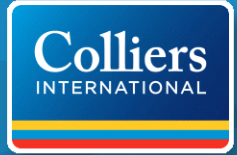
LEASE RATE (REDUCED)

- > **\$1.00 per rentable square foot, plus electrical, janitorial and trash removal (no pass throughs or CAM charges)**

KEN KISBERT
858.677.5359 Direct
ken.kisbert@colliers.com
License No: 00930153

COLLIERS INTERNATIONAL
4660 La Jolla Village Drive, Suite 100
San Diego, CA 92122
www.colliers.com/sandiego

FOR LEASE > LEASE RATE REDUCED!

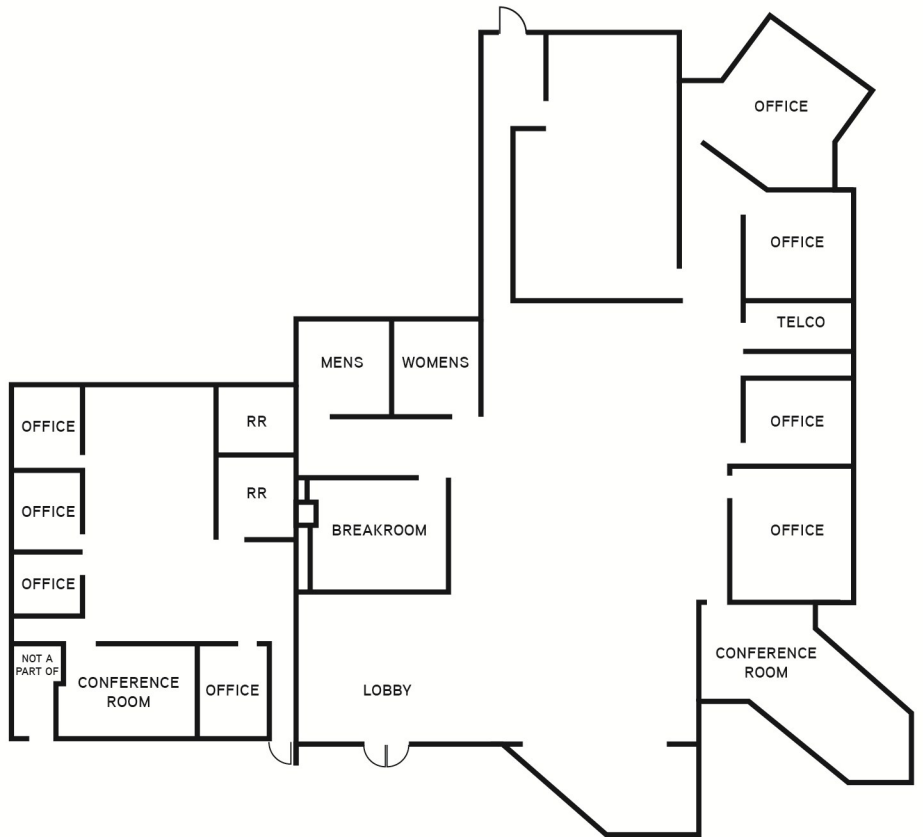


KEARNY MESA R&D | OFFICE BUILDING

9596 CHESAPEAKE DRIVE | SAN DIEGO, CA

AVAILABLE SUITES

SUITE	RENTABLE SQUARE FEET	LEASE RATE (RENTABLE)	COMMENTS
SUITE A	6,564	\$1.00 per SF, per month + Electrical & Janitorial, no pass throughs or CAM Charges	4 offices, conference room, lunchroom with sink & 2 large open areas
SUITE A1	2,733	\$1.00 per SF, per month + Electrical & Janitorial, no pass throughs or CAM Charges	4 offices, conference room, large open area and 2 restrooms
Suite A & a portion of Suite A1	9,297		



This document has been prepared by Colliers International for advertising and general information only. Colliers International makes no guarantees, representations or warranties of any kind, expressed or implied, regarding the information including, but not limited to, warranties of content, accuracy and reliability. Any interested party should undertake their own inquiries as to the accuracy of the information. Colliers International excludes unequivocally all inferred or implied terms, conditions and warranties arising out of this document and excludes all liability for loss and damages arising therefrom. Colliers International is a worldwide affiliation of independently owned and operated companies.

