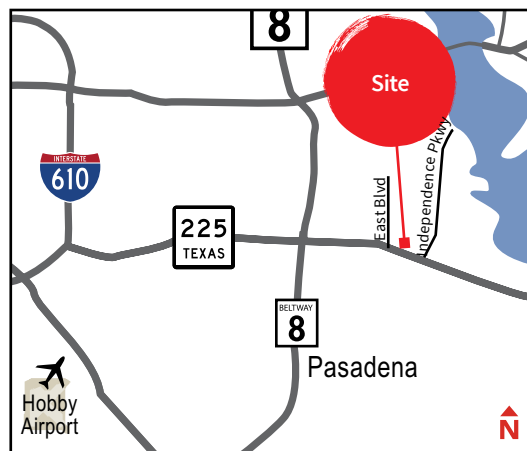


For Sale

Site features:

- Land area: ±56.1656 acres (±2,446,573 land s.f.)
- Office building: ±2,181 s.f.
- Frontage: ±894 feet on Hwy 225
- Flood zone: Outside of 500-year floodplain
- Zoning: Intensive Industrial (M3) District
- Access: Hwy 225 and East Blvd
- City of Deer Park Industrial District



±56.1656 acres

6600 Highway 225
Deer Park, TX 77507

Ryan Fuselier

+1 713 888 4032

ryan.fuselier@am.jll.com

Mark Nicholas, SIOR

+1 713 888 4024

mark.nicholas@am.jll.com

Richard Quarles, SIOR

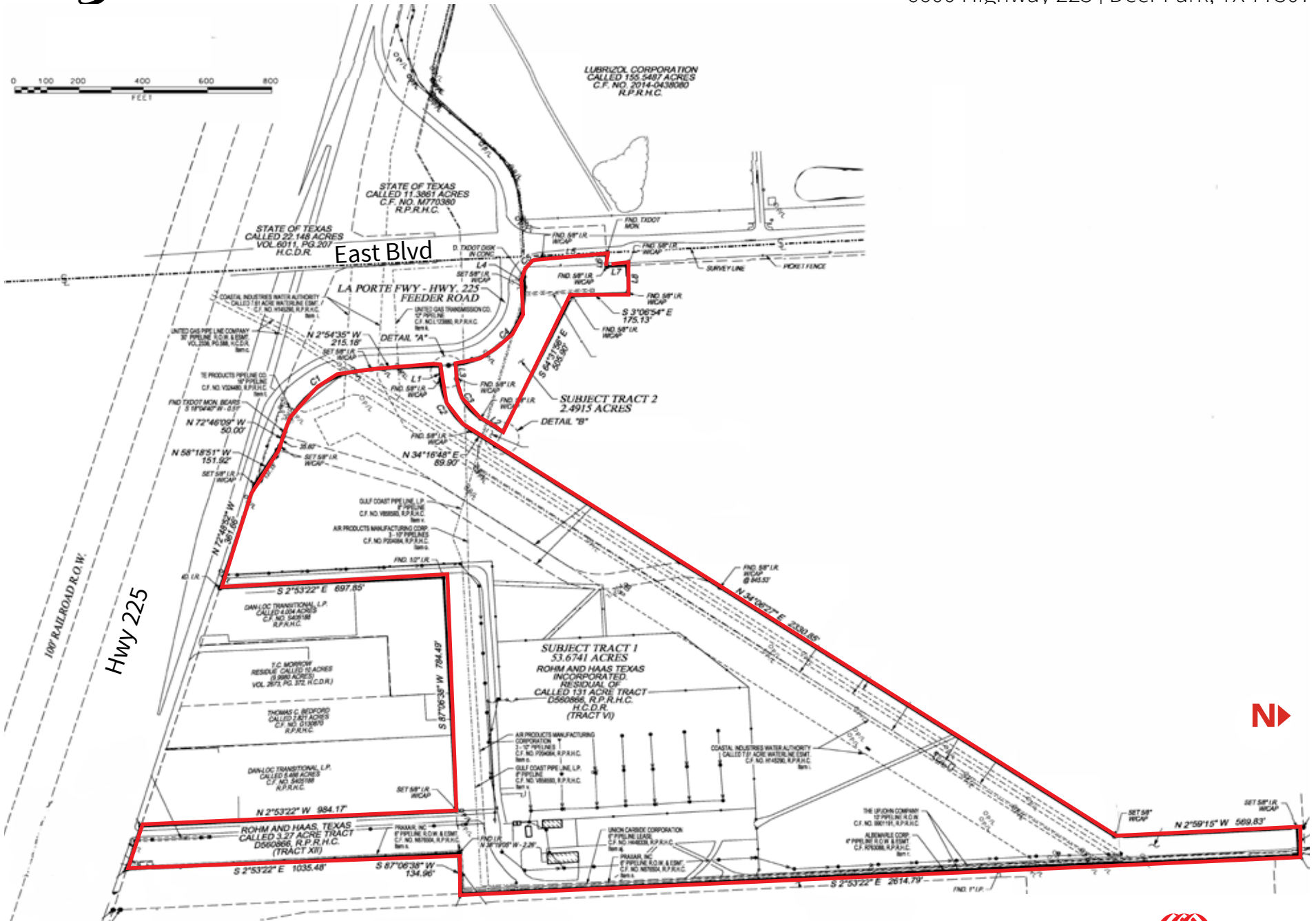
+1 713 888 4019

richard.quarles@am.jll.com



For Sale

±56.1656 acres available for sale
6600 Highway 225 | Deer Park, TX 77507

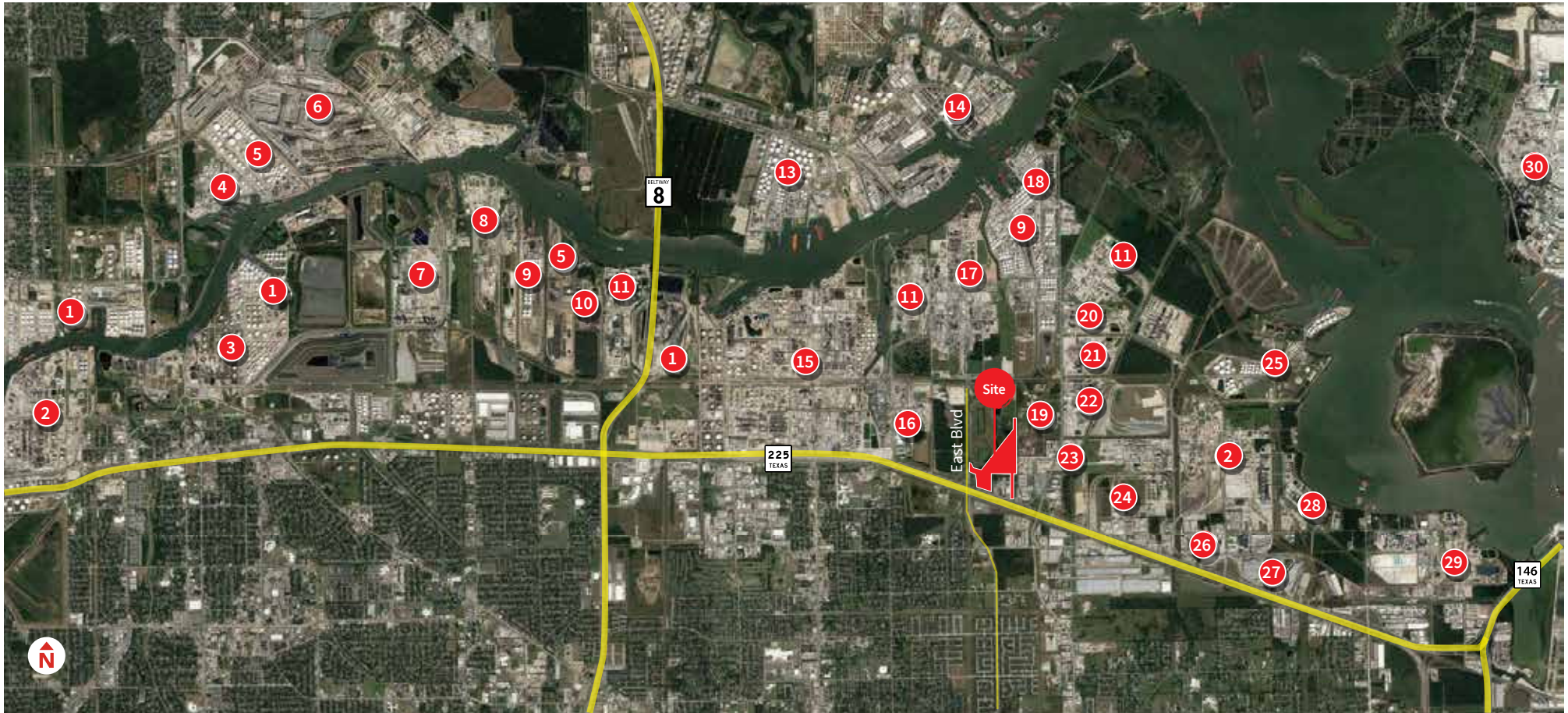


The information contained herein is obtained from sources believed to be reliable; however, JLL makes no guarantees, warranties or representations as to the completeness or accuracy thereof. The presentation of this property is submitted subject to errors, omissions, change of price or conditions, and is subject to prior sale, lease or withdrawal without notice.



For Sale

±56.1656 acres available for sale
6600 Highway 225 | Deer Park, TX 77507



- | | | | | | |
|----------------------|------------------------------|----------------------|----------------------------|--------------|-----------------|
| 1 Kinder Morgan | 6 Greens Port | 11 BASF | 16 Lubrizol | 21 INEOS | 26 Air Products |
| 2 Lyondell Basell | 7 Chevron Phillips Chemical | 12 Occidental Vinyls | 17 Dow | 22 Solvay | 27 KTN |
| 3 Pasadena Refining | 8 Albemarle | 13 Oiltanking | 18 Vopak | 23 AkzoNobel | 28 Linde Gas |
| 4 Targa Midstream | 9 Intercontinental Terminals | 14 Houston Fuel Oil | 19 GEO Specialty Chemicals | 24 Braskem | 29 Du Pont |
| 5 Magellan Midstream | 10 Axiall | 15 Shell | 20 Total Petrochemicals | 25 BOSTCO | 30 Exxon |

The information contained herein is obtained from sources believed to be reliable; however, JLL makes no guarantees, warranties or representations as to the completeness or accuracy thereof. The presentation of this property is submitted subject to errors, omissions, change of price or conditions, and is subject to prior sale, lease or withdrawal without notice.

