



FOR LEASE

400 Warren Ave
Bremerton, WA 98337



WARREN OFFICE BUILDING

Jamie Firth | Lisa Tallman

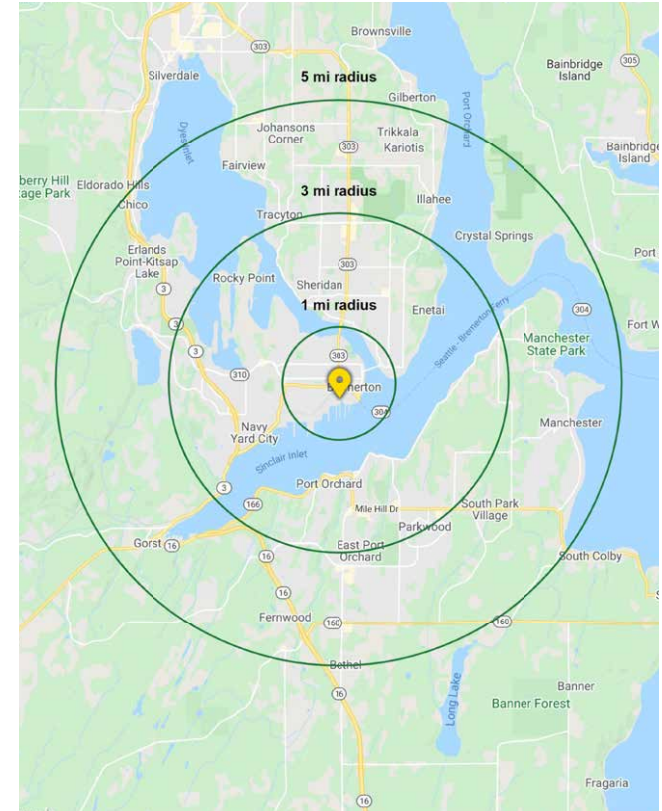
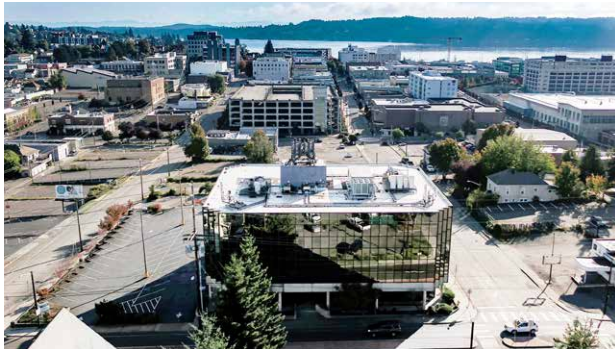
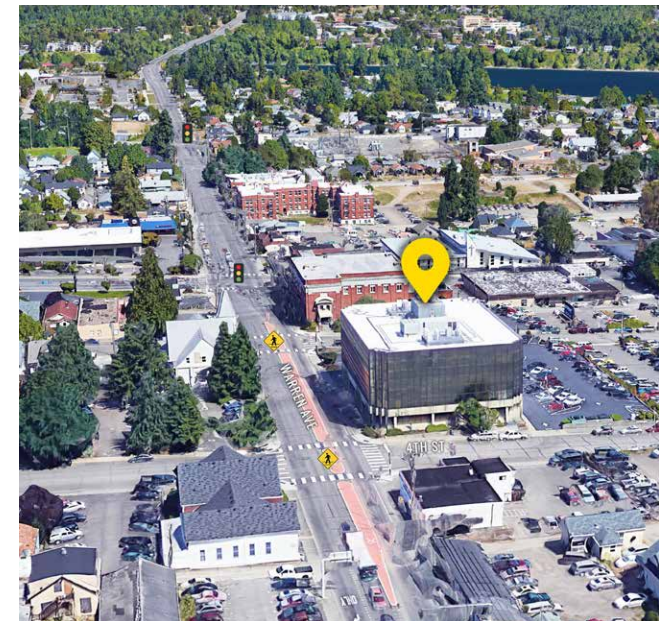
First Western Properties—Tacoma Inc. | 253.472.0404
6402 Tacoma Mall Blvd, Tacoma, WA 98409 | fwp-inc.com

400 WARREN AVENUE is centrally located in Downtown Bremerton and shares close access to major thoroughfares as well as major retailers. Located just blocks away from the Washington State Ferry as well as the new Washington State Foot Ferry terminal with direct routes and service to Downtown Seattle

AVAILABLE

905 SF - 11,380 SF \$20 - \$24 PSF FULL SERVICE

- Close access to Highway 3, Kitsap Way, and Wheaton Way
- Excellent on-site parking opportunities available
- Elevator access throughout the building
- Major interior renovations underway



Population



Average HH Income

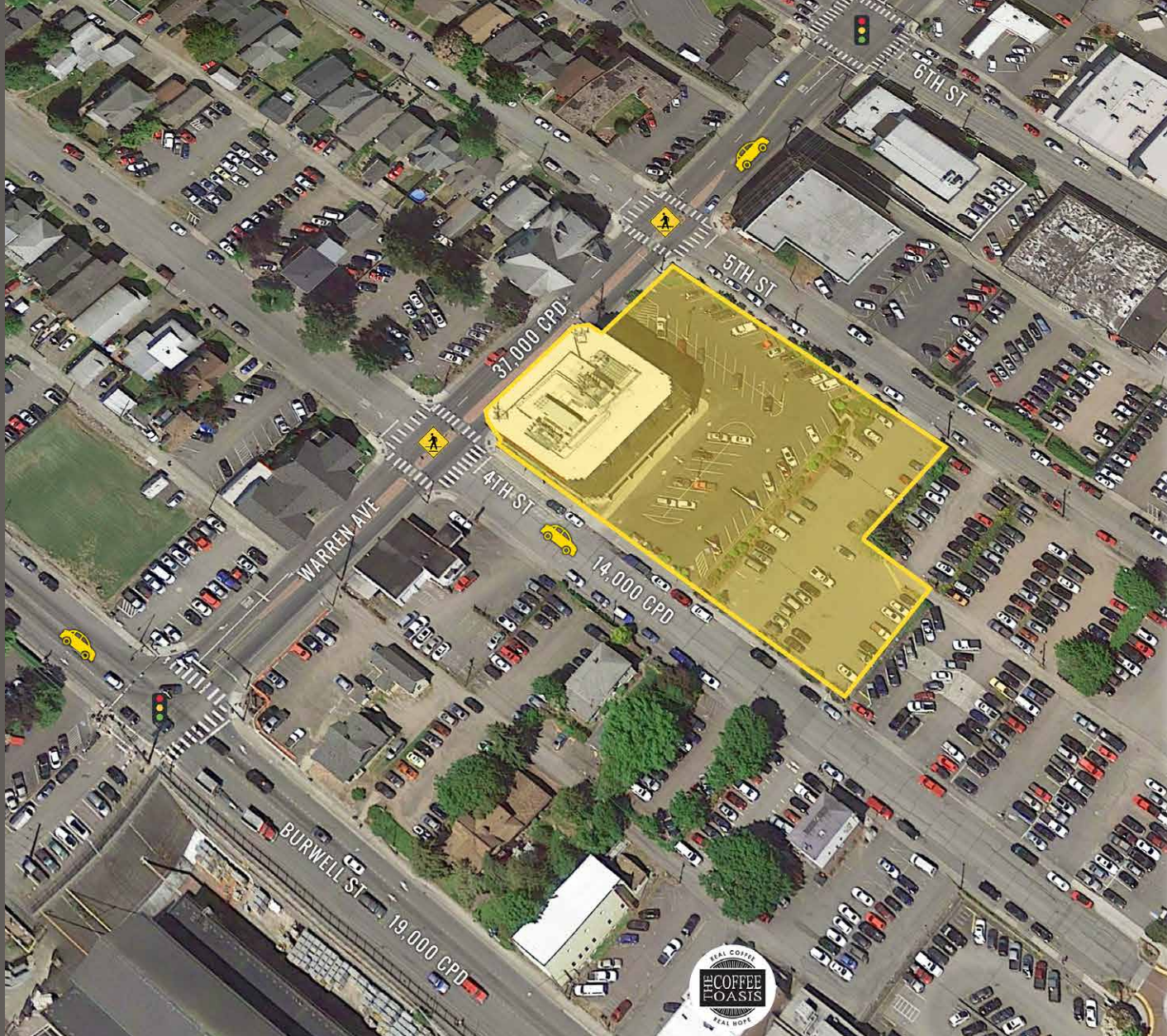


Daytime Population

Regis - 2020

| | Population | Average HH Income | Daytime Population |
|--------|------------|-------------------|--------------------|
| Mile 1 | 14,228 | \$66,130 | 9,452 |
| Mile 3 | 60,585 | \$76,434 | 44,659 |
| Mile 5 | 120,221 | \$84,283 | 76,250 |

LOCATION DETAILS



Downtown Bremerton SCOOT Car Locations



Kitsap Transit's Smart Commuter Option Of Today (SCOOT) is a car sharing program for commuters who travel by foot, bike, bus, carpool or vanpool to work in certain areas of Kitsap County.

If you work in downtown Bremerton, near the Kitsap County Courthouse or near Bainbridge Island City Hall, SCOOT may be the perfect alternative to using a personal vehicle for errands, lunch, appointments or whatever you need to do while at work.



Located in Bremerton Business District



Located moments from Kitsap Transit SCOOT

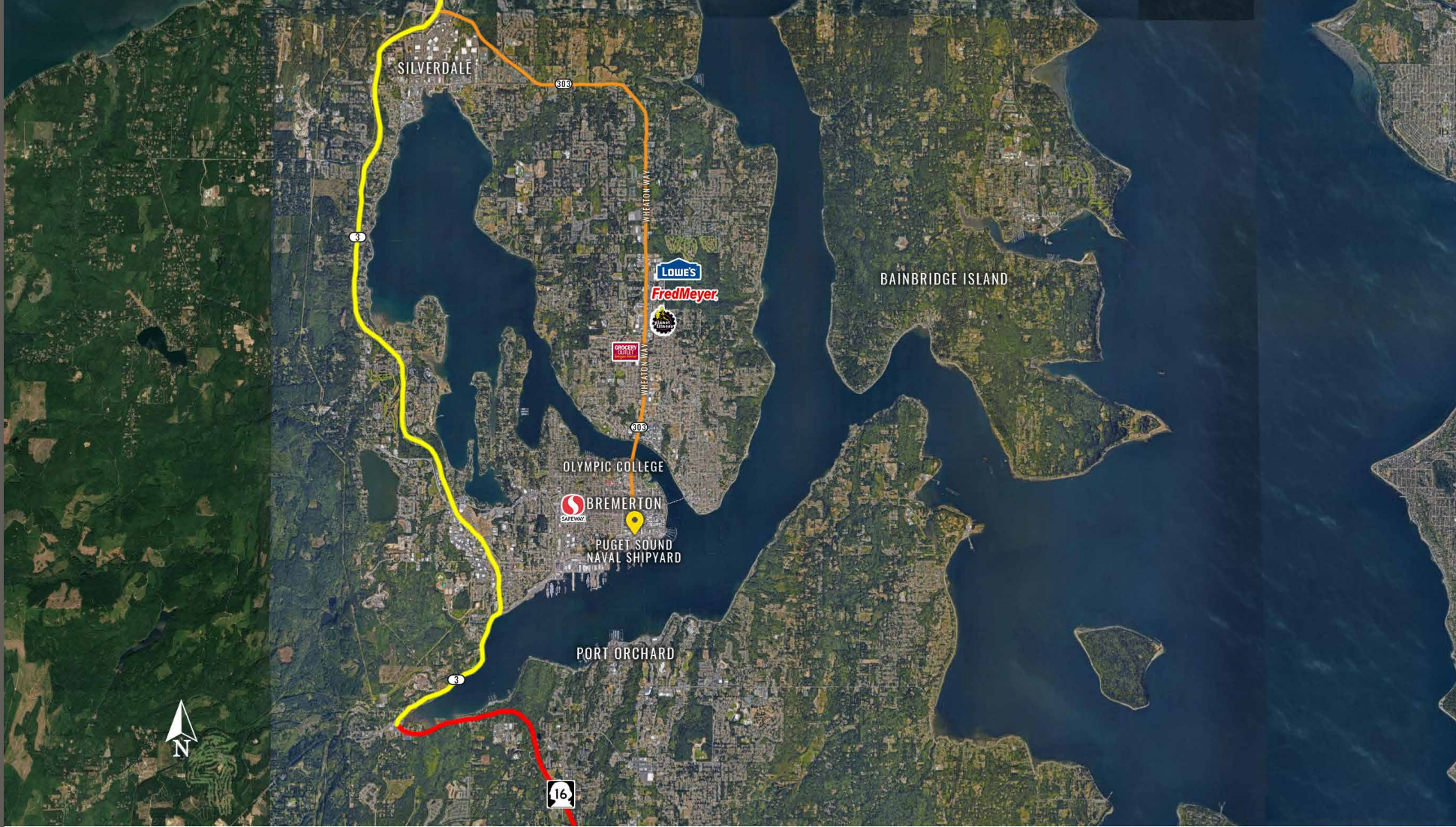


37,000 CPD Warren Ave

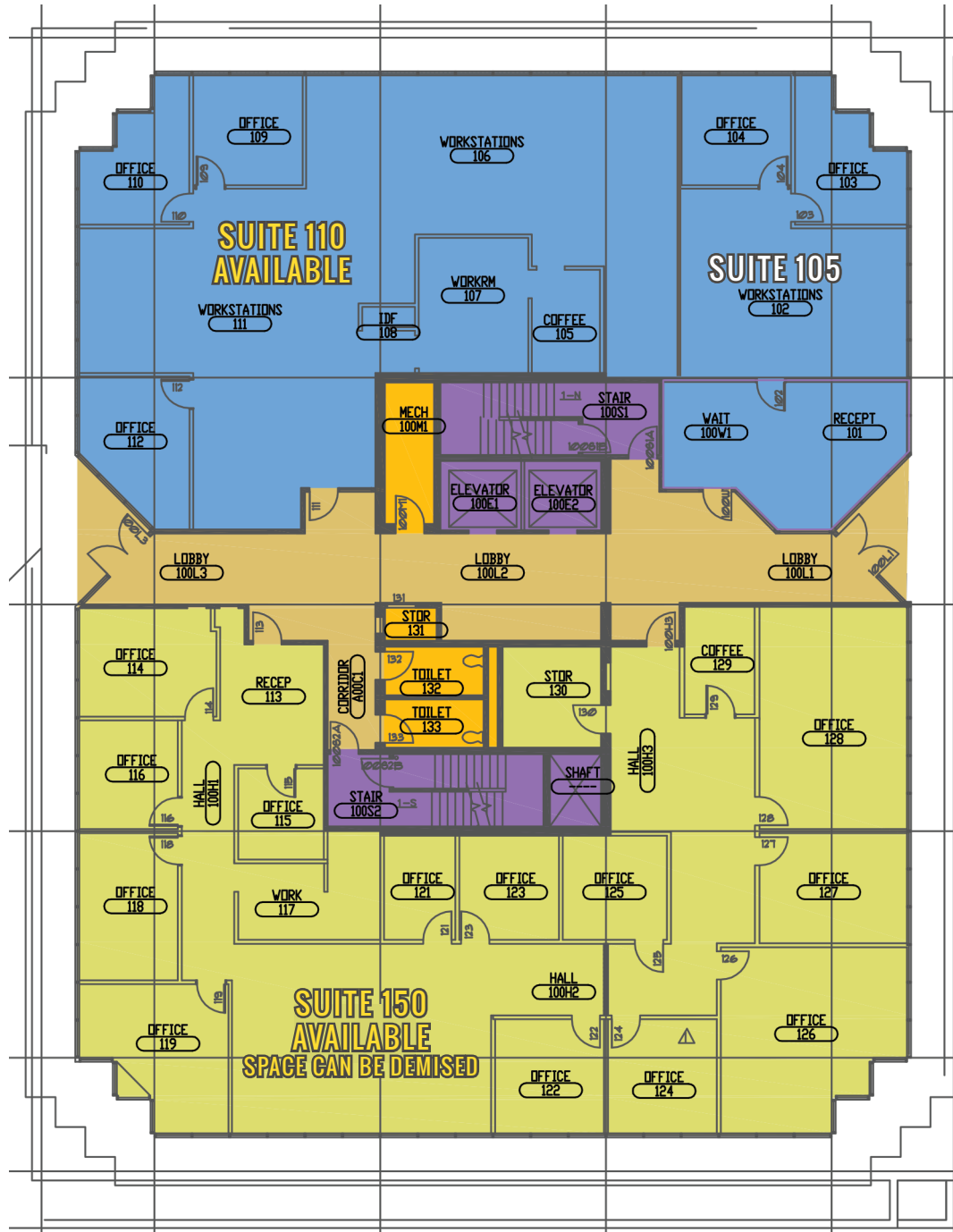


14,000 CPD 4th St

LOCATION AERIAL



FLOOR PLAN



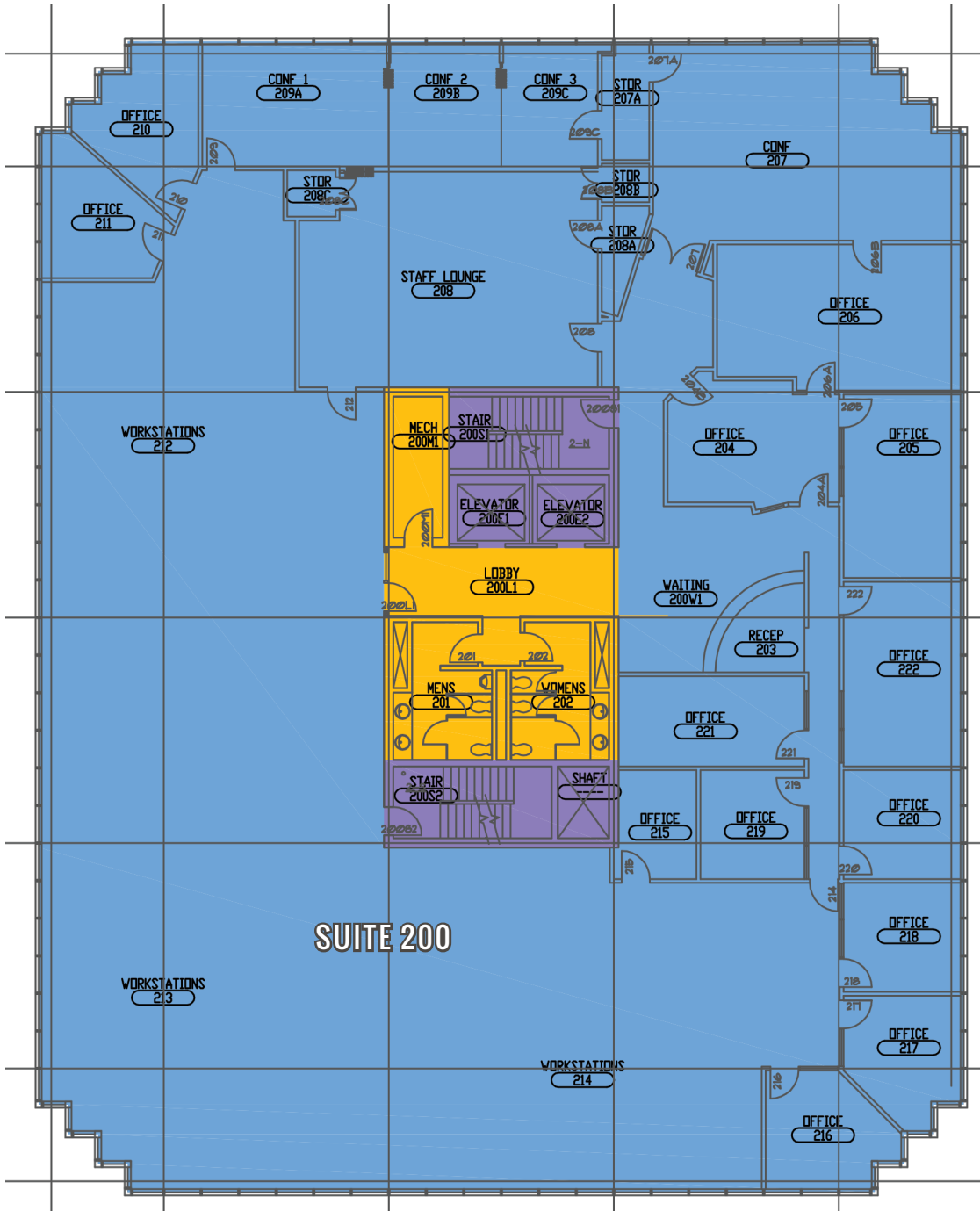
FLOOR 1

| Suite | Tenant | SF |
|-------|------------------------------|--------|
| 110 | AVAILABLE | 2,773 |
| 105 | The Hubbell Agency - Farmers | 984 |
| 150 | AVAILABLE | 4,445 |
| 200 | Peninsula Community Health | 11,659 |
| 300 | Life Cycle Engineering | 7,600 |
| 305 | AVAILABLE | 2,128 |
| 312 | Shipyard Staffing | 1,629 |
| 400 | WA State - DSHS | 4,225 |
| 405 | AVAILABLE | 905 |
| 410 | AVAILABLE | 1,132 |
| 415 | Witt Law | 1,345 |
| 450 | AVAILABLE | 3,697 |
| BSMT | PCHS Storage | 107 |
| BSMT | AVAILABLE (Shell Condition) | 11,380 |

WARREN TOWER
400 Warren Ave

FLOOR 2

FLOOR PLAN

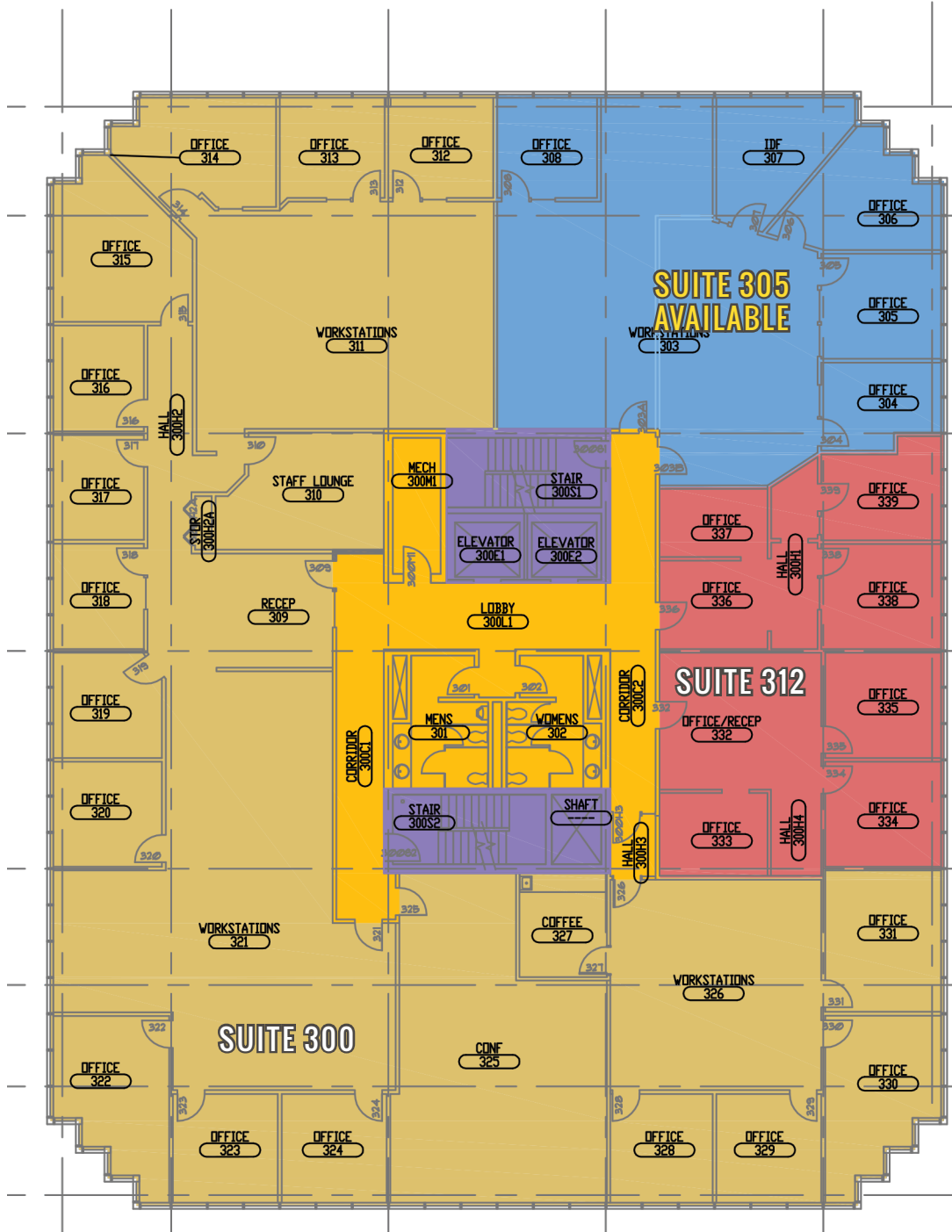


| Suite | Tenant | SF |
|-------|------------------------------|--------|
| 110 | AVAILABLE | 2,773 |
| 105 | The Hubbell Agency - Farmers | 984 |
| 150 | AVAILABLE | 4,445 |
| 200 | Peninsula Community Health | 11,659 |
| 300 | Life Cycle Engineering | 7,600 |
| 305 | AVAILABLE | 2,128 |
| 312 | Shipyard Staffing | 1,629 |
| 400 | WA State - DSHS | 4,225 |
| 405 | AVAILABLE | 905 |
| 410 | AVAILABLE | 1,132 |
| 415 | Witt Law | 1,345 |
| 450 | AVAILABLE | 3,697 |
| BSMT | PCHS Storage | 107 |
| BSMT | AVAILABLE (Shell Condition) | 11,380 |

WARREN TOWER
400 Warren Ave

FLOOR 3

FLOOR PLAN

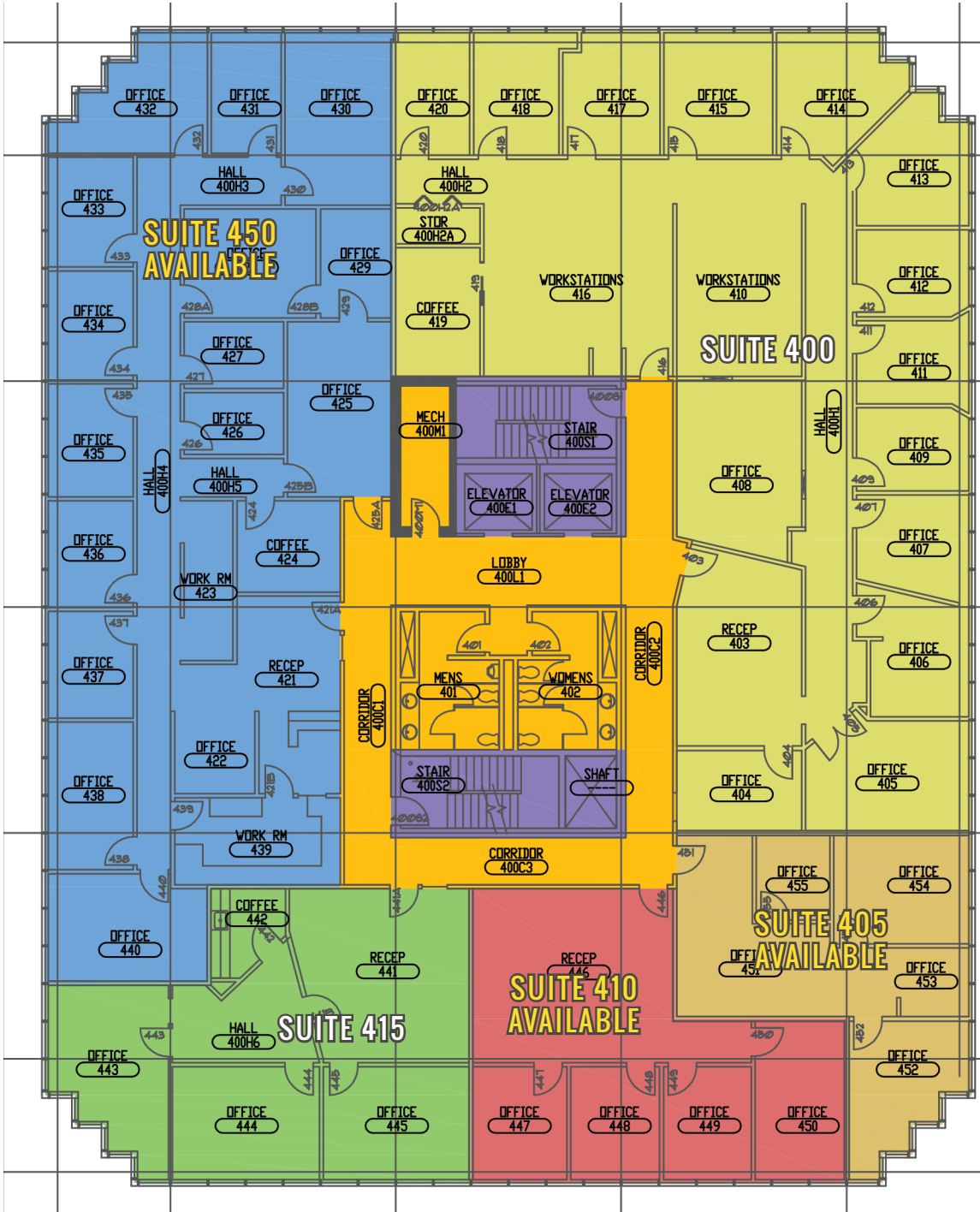


| Suite | Tenant | SF |
|------------|------------------------------|--------------|
| 110 | AVAILABLE | 2,773 |
| 105 | The Hubbell Agency - Farmers | 984 |
| 150 | AVAILABLE | 4,445 |
| 200 | Peninsula Community Health | 11,659 |
| 300 | Life Cycle Engineering | 7,600 |
| 305 | AVAILABLE | 2,128 |
| 312 | Shipyard Staffing | 1,629 |
| 400 | WA State - DSHS | 4,225 |
| 405 | AVAILABLE | 905 |
| 410 | AVAILABLE | 1,132 |
| 415 | Witt Law | 1,345 |
| 450 | AVAILABLE | 3,697 |
| BSMT | PCHS Storage | 107 |
| BSMT | AVAILABLE (Shell Condition) | 11,380 |

WARREN TOWER
400 Warren Ave

FLOOR 4

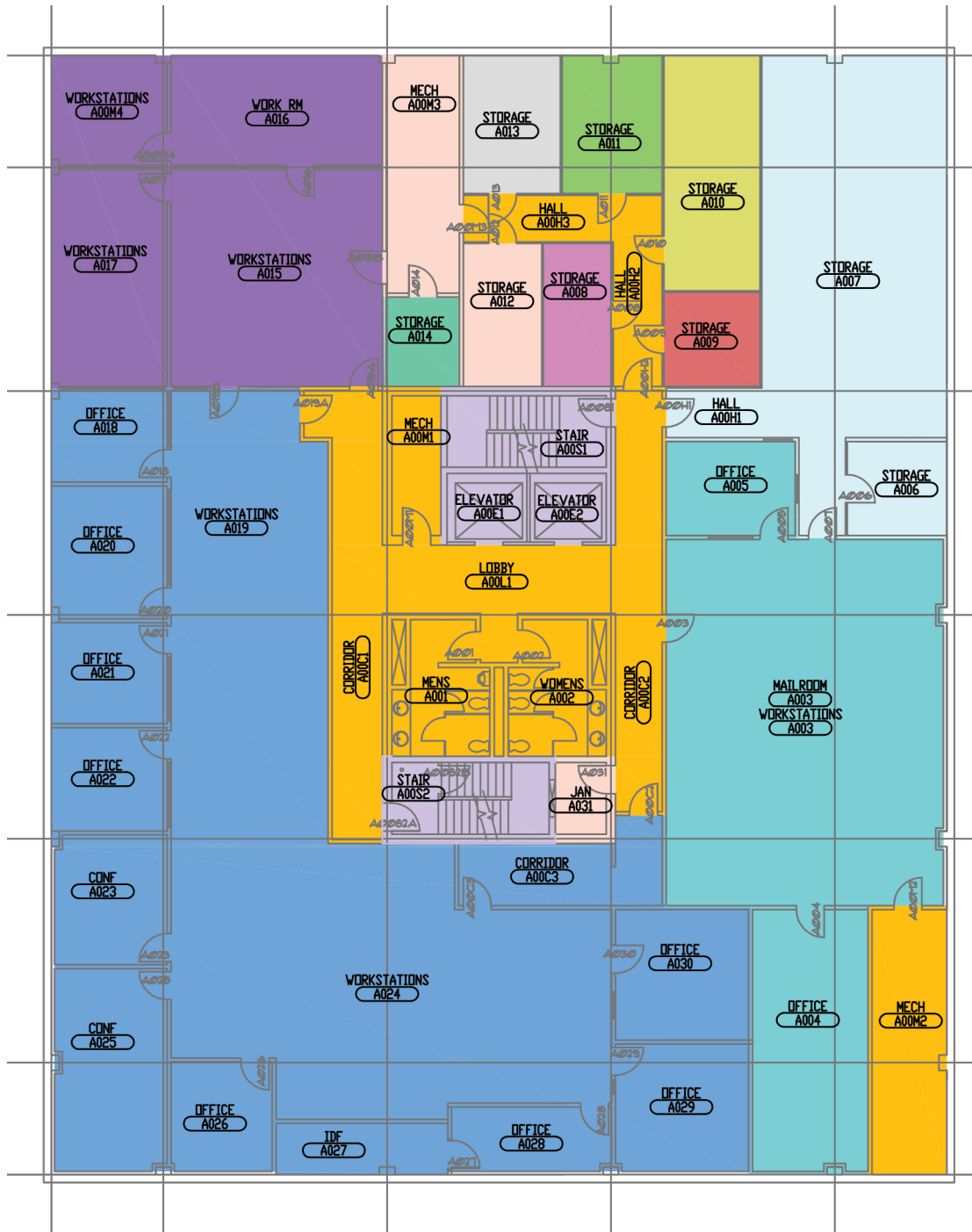
FLOOR PLAN



| Suite | Tenant | SF |
|-------|------------------------------|--------|
| 110 | AVAILABLE | 2,773 |
| 105 | The Hubbell Agency - Farmers | 984 |
| 150 | AVAILABLE | 4,445 |
| 200 | Peninsula Community Health | 11,659 |
| 300 | Life Cycle Engineering | 7,600 |
| 305 | AVAILABLE | 2,128 |
| 312 | Shipyard Staffing | 1,629 |
| 400 | WA State - DSHS | 4,225 |
| 405 | AVAILABLE | 905 |
| 410 | AVAILABLE | 1,132 |
| 415 | Witt Law | 1,345 |
| 450 | AVAILABLE | 3,697 |
| BSMT | PCHS Storage | 107 |
| BSMT | AVAILABLE (Shell Condition) | 11,380 |

WARREN TOWER
400 Warren Ave

FLOOR PLAN



BASEMENT

| Suite | Tenant | SF |
|-------------|------------------------------------|---------------|
| 110 | AVAILABLE | 2,773 |
| 105 | The Hubbell Agency - Farmers | 984 |
| 150 | AVAILABLE | 4,445 |
| 200 | Peninsula Community Health | 11,659 |
| 300 | Life Cycle Engineering | 7,600 |
| 305 | AVAILABLE | 2,128 |
| 312 | Shipyard Staffing | 1,629 |
| 400 | WA State - DSHS | 4,225 |
| 405 | AVAILABLE | 905 |
| 410 | AVAILABLE | 1,132 |
| 415 | Witt Law | 1,345 |
| 450 | AVAILABLE | 3,697 |
| BSMT | PCHS Storage | 107 |
| BSMT | AVAILABLE (Shell Condition) | 11,380 |

TACOMA | KIRKLAND | PORTLAND | SEATTLE



RELATIONSHIP FOCUSED. RESULTS DRIVEN.

JAMIE FIRTH

253.284.3649
jamie@firstwesternproperties.com

LISA TALLMAN

253.471.5504
lisa@firstwesternproperties.com



First Western Properties—Tacoma Inc. | 253.472.0404
6402 Tacoma Mall Blvd, Tacoma, WA 98409 | fwp-inc.com

© First Western Properties, Inc. DISCLAIMER: The above information has been secured from sources believed to be reliable, however, no representations are made to its accuracy. Prospective tenants or buyers should consult their professional advisors and conduct their own independent investigation. Properties are subject to change in price and/or availability without notice.