

1565  
Hotel Circle South  
MISSION GROVE  
OFFICE PARK  
FOR LEASE



## MISSION VALLEY OFFICE SPACE

Keith Herbert  
kherbert@mckeecompany.com  
619-642-2711 xt. 205  
Lic No. 01892190

65,649 Square Foot Office Park  
Located in the bustling retail, residential, and office hub of Mission Valley, San Diego, CA

Ashley Cosentino  
acosentino@mckeecompany.com  
619-642-2711 xt. 221  
Lic No. 01977154

# 1565 Hotel Circle South MISSION GROVE OFFICE PARK --- FOR LEASE

## PROPERTY INFO:

Building Size -	65,649 SF	Location -	Mission Valley, San Diego, CA
Stories -	3	Use Type -	Office & Medical
Restrooms -	Common area womens & mens	Parking -	Assigned garage
Elevator -	Accesses all floors, including parking garage	Guest Parking -	Plentiful free onsite parking

Mission Grove Office Park is comprised of two Class B “Garden Style” office buildings located in the highly desirable Mission Valley sub-market of San Diego, CA. Property is full of mature trees and greenery that gives the property a peaceful feel to the business occupants and visitors.

The property is located next to the Hilton Double Tree Hotel among many other hotels and businesses in the surrounding area of Hotel Circle. Numerous retail amenities within close proximity such as restaurants, retail shopping, banks, fitness facilities, auto dealerships, and grocery stores; also Mission Valley and Fashion Valley Malls..

## DEMOGRAPHICS:

	<u>1 Mile</u>	<u>3 Miles</u>	<u>5 Miles</u>
Average Age	41	39	37
Consumer Spending	\$287,995	\$2,136,705	\$5,843,182
Population Growth 2010-2018	13.35%	10.56%	8.87%
Population Growth 2018-2023	5.08%	4.61%	4.37%

Keith Herbert  
kherbert@mckeecompany.com  
619-642-2711 xt. 205  
Lic No. 018992190



WWW.MCKEECOMMERCIALREALESTATE.COM

Ashley Cosentino  
acosentino@mckeecompany.com  
619-642-2711 xt. 221  
Lic No. 01977154

# 1565

## Hotel Circle South MISSION GROVE OFFICE PARK

### SUITE 350

**RENT AMOUNT**

\$1,350 per month

**TERM**

2+ years minimum

**SIZE**

± 682 SF

**PARKING**

1 assigned garage space with free parking for employees & guests

**DETAILS**

1 private office with operable windows, waiting room, reception office, kitchenette, 3rd floor location with elevator access

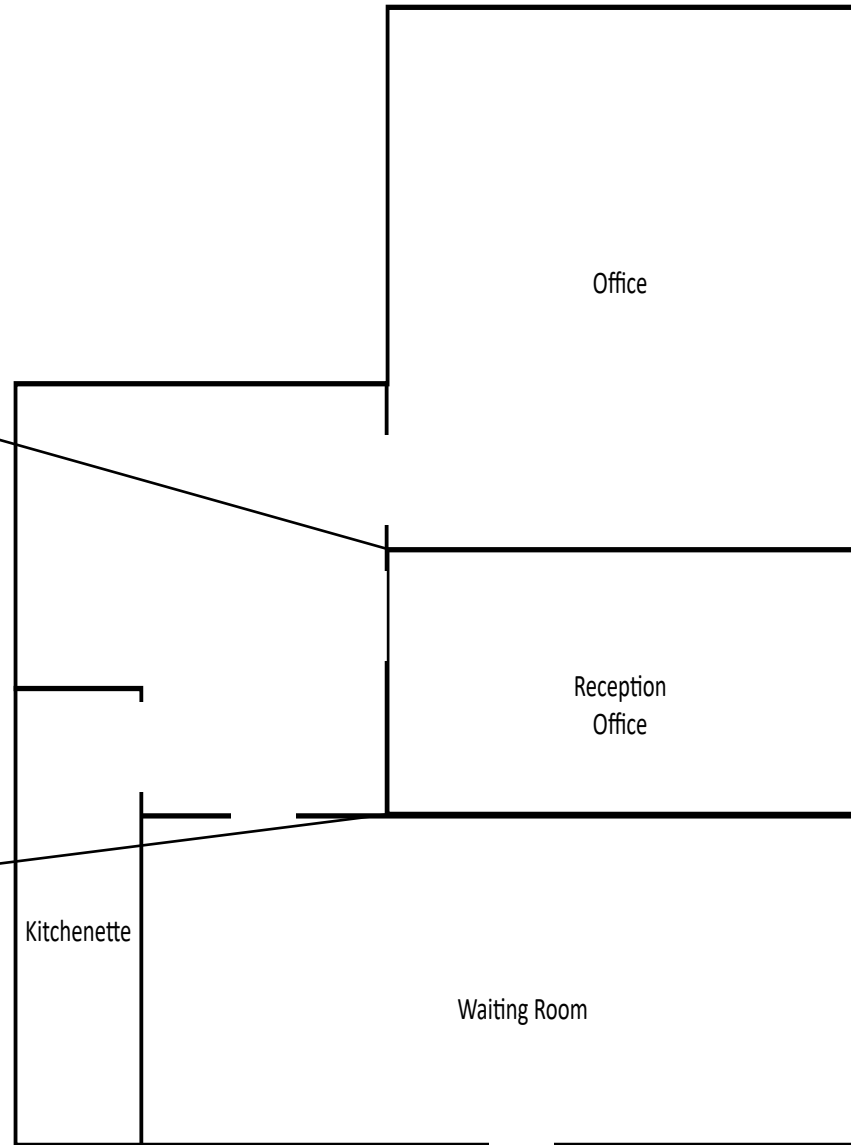
**EXPENSES**

Tenant pays directly billable utilities such as electric only, NO CAM charges



[WWW.MCKEECOMMERCIALREALESTATE.COM](http://WWW.MCKEECOMMERCIALREALESTATE.COM)

1565  
Hotel Circle South  
MISSION GROVE  
OFFICE PARK  
SUITE 360 | ± 682 SF



# 1565 Hotel Circle South MISSION GROVE OFFICE PARK

## RESTURANTS NEARBY

Benihana	True Food Kitchen
Rubio's	The Lazy Dog
CRUST Kitchen	Shake Shack
STACKED	King's Fish House

## BUSINESSES NEARBY

United Health Group  
Paychex  
Scripps Mercy Hospital  
Outback Steakhouse

## HOTELS NEARBY

Double Tree  
Residence Inn  
Hampton Inn  
Handlery  
Town & Country

## FREEWAY ACCESS

0.8 miles to I-8 East  
1 mile to I-8 West  
1 mile to I-8 & 163 Interchange

