

FOR LEASE

Parkway Corporate Plaza - Up to ±39,000 SF Available for Lease

1620 - 1680 East Roseville Parkway, Roseville CA 95661

Voit

REAL ESTATE SERVICES

\$1.70 PSF/FS



FOR LEASE

Parkway Corporate Plaza

1620 - 1680 East Roseville Parkway, Roseville, CA

Voit

REAL ESTATE SERVICES



Property Highlights

- Parkway Corporate Plaza is 28 acre Master Planned Office Park
- ±286,772 Square Foot Project
- ±3,170 - ±38,689 Contiguous Square Feet Available
- Office and Medical uses allowed
- Parking: Up to 6/1000
- All suites move-in ready
- Fiber Optic Ready
- Building Signage Available
- Common area showers and lockers
- Close Proximity to I-80 and Highway 65
- Tenants Include: Wells Fargo, Radiological Associates, Kaiser Permanente & State of California

FOR LEASE

Parkway Corporate Plaza

1620 - 1680 East Roseville Parkway, Roseville, CA

1620 East Roseville Pkwy Property Highlights

- ±101,400 Sq Ft / Two-Story, Built in 2000
- Available Suite:
 - Suite 205: ±10,387 SF
(Divisible to ±3,170 SF)
- Fully furnished:
 - 11 Private offices
 - Large conference room
 - Large work room
 - 33 Workstations
 - 4 Large workstations
 - Break room
 - Reception area



Jon R. Walker
Senior Vice President
916.751.3631
jwalker@voitco.com
Lic #01204666

Tom S. Bacci
Senior Vice President
916.751.3630
tbacci@voitco.com
Lic #01078422

Voit
REAL ESTATE SERVICES

2237 Douglas Boulevard, Suite 100, Roseville, CA 95661 • 916.772.8648 • 916.848.0205 E-Fax • Lic #01333376 | www.voitco.com

FOR LEASE

Parkway Corporate Plaza

1620 - 1680 East Roseville Parkway, Roseville, CA

1620 East Roseville Parkway

Suite 205 - ±10,387 Sq Ft - Fully Furnished



PRIVATE OFFICE



SMALL CONFERENCE ROOM



LARGE WORK STATION



BREAK ROOM



LARGE CONFERENCE ROOM



TYPICAL WORK STATION



PRIVATE OFFICE



TYPICAL WORK STATION

Jon R. Walker
Senior Vice President
916.751.3631
jwalker@voitco.com
Lic #01204666

Tom S. Bacci
Senior Vice President
916.751.3630
tbacci@voitco.com
Lic #01078422

Voit
REAL ESTATE SERVICES

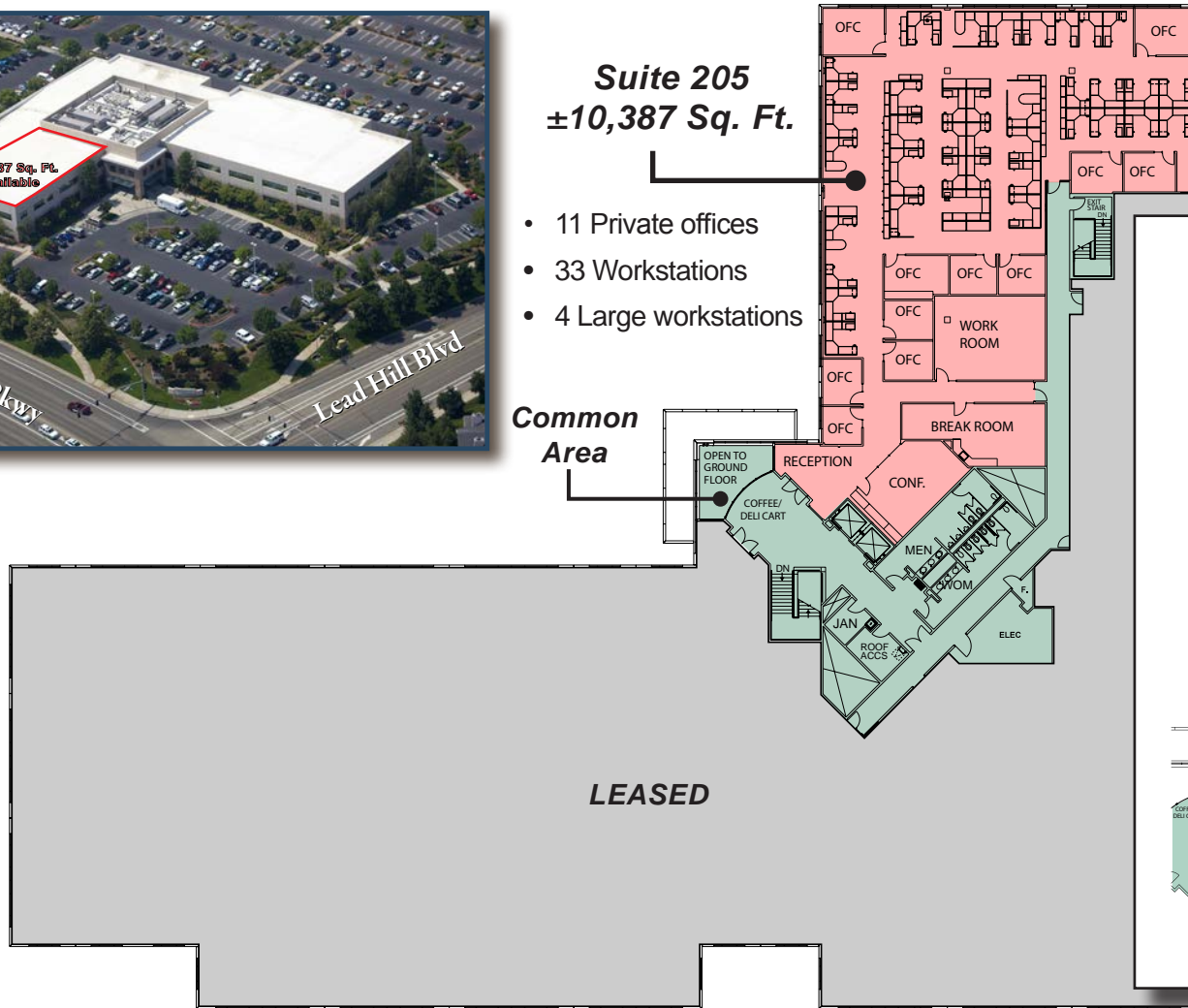
2237 Douglas Boulevard, Suite 100, Roseville, CA 95661 • 916.772.8648 • 916.848.0205 E-Fax • Lic #01333376 | www.voitco.com



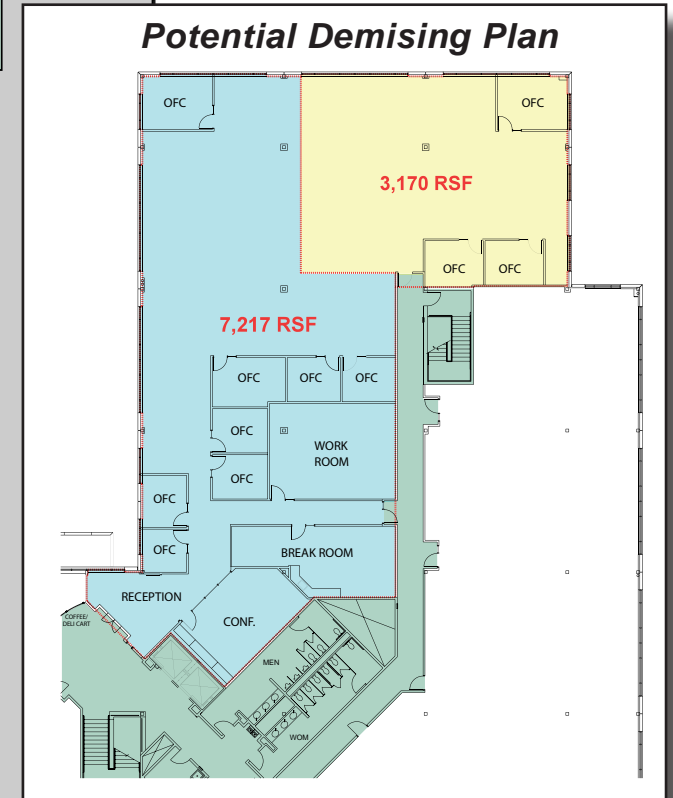
Suite 205 ±10,387 Sq. Ft.

- 11 Private offices
- 33 Workstations
- 4 Large workstations

Common Area



Potential Demising Plan



Jon R. Walker
Senior Vice President
916.751.3631
jwalker@voitco.com
Lic #01204666

Tom S. Bacci
Senior Vice President
916.751.3630
tbacci@voitco.com
Lic #01078422

Voit
REAL ESTATE SERVICES

FOR LEASE

Parkway Corporate Plaza

1620 - 1680 East Roseville Parkway, Roseville, CA

1660 East Roseville Pkwy Property Highlights

- ±73,180 Sq Ft / Single-Story, Built in 2000
- Available Suite:
 - Suite 100: ±38,689 SF
 - (Min Divisible to ±10,000 SF)
- Unique space with high ceiling design
- 750 KW standby generator (Detroit Emergency Generator, Model 750DS4)
- Building signage available
- Parking: Up to 6/,1000 SF
- Fiber optic ready
- Restrooms inside suite



Jon R. Walker
Senior Vice President
916.751.3631
jwalker@voitco.com
Lic #01204666

Tom S. Bacci
Senior Vice President
916.751.3630
tbacci@voitco.com
Lic #01078422

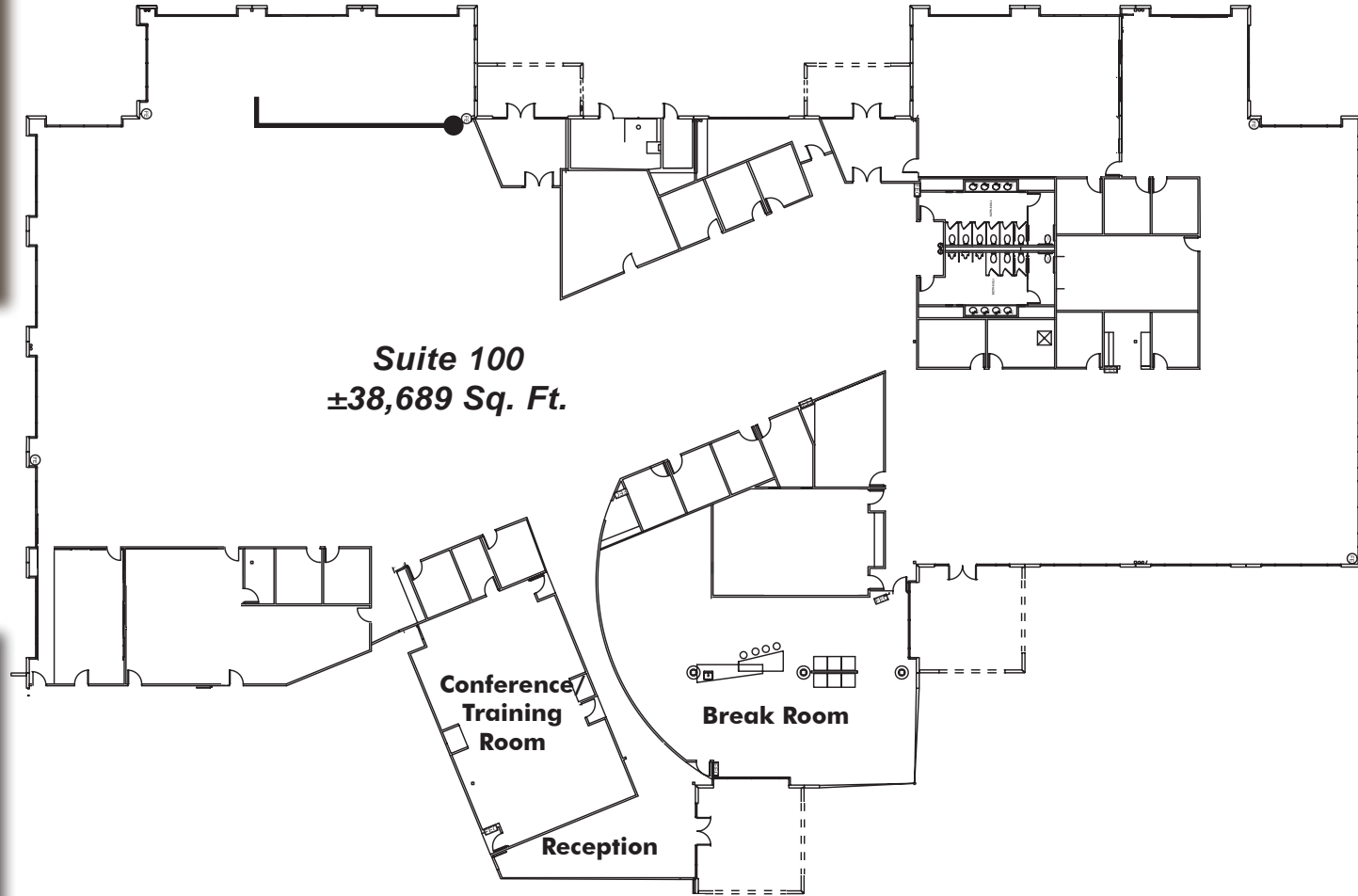
Voit
REAL ESTATE SERVICES

2237 Douglas Boulevard, Suite 100, Roseville, CA 95661 • 916.772.8648 • 916.848.0205 E-Fax • Lic #01333376 | www.voitco.com

1660 East Roseville Parkway

Parkway Corporate Plaza

1620 - 1680 East Roseville Parkway, Roseville, CA



Jon R. Walker
Senior Vice President
916.751.3631
jwalker@voitco.com
Lic #01204666

Tom S. Bacci
Senior Vice President
916.751.3630
tbacci@voitco.com
Lic #01078422

Voit
REAL ESTATE SERVICES

2237 Douglas Boulevard, Suite 100, Roseville, CA 95661 • 916.772.8648 • 916.848.0205 E-Fax • Lic #01333376 | www.voitco.com

Suite 100
±38,689 Sq. Ft.

POTENTIAL FURNITURE LAYOUT



Jon R. Walker
Senior Vice President
916.751.3631
jwalker@voitco.com
Lic #01204666

Tom S. Bacci
Senior Vice President
916.751.3630
tbacci@voitco.com
Lic #01078422

Voit
REAL ESTATE SERVICES

2237 Douglas Boulevard, Suite 100, Roseville, CA 95661 • 916.772.8648 • 916.848.0205 E-Fax • Lic #01333376 | www.voitco.com

FOR LEASE

Parkway Corporate Plaza

1620 - 1680 East Roseville Parkway, Roseville, CA

1680 East Roseville Pkwy Property Highlights

- ±56,879 Sq Ft / Single-Story, Built in 2000
- Available Suite:
 - Suite 140 - ±3,688 Sq Ft



Jon R. Walker
Senior Vice President
916.751.3631
jwalker@voitco.com
Lic #01204666

Tom S. Bacci
Senior Vice President
916.751.3630
tbacci@voitco.com
Lic #01078422

Voit
REAL ESTATE SERVICES

2237 Douglas Boulevard, Suite 100, Roseville, CA 95661 • 916.772.8648 • 916.848.0205 E-Fax • Lic #01333376 | www.voitco.com



Jon R. Walker
Senior Vice President
916.751.3631
jwalker@voitco.com
Lic #01204666

Tom S. Bacci
Senior Vice President
916.751.3630
tbacci@voitco.com
Lic #01078422

Voit
REAL ESTATE SERVICES

2237 Douglas Boulevard, Suite 100, Roseville, CA 95661 • 916.772.8648 • 916.848.0205 E-Fax • Lic #01333376 | www.voitco.com