

# WEST LA OFFICE SPACE - HIGH END REMODEL WITH DESIGNER FINISHES

2219 COLBY AVENUE, LOS ANGELES, CA 90064



GT International Motors Ltd.  
Quality BMW Service since 1976



Commercial Asset Group  
1801 Century Park East, Suite 1550  
Los Angeles, California 90067  
P 310.275.8222 F 310.275.8223

Jason Cole  
Managing Director  
Phone: 310.272.7383  
Email: [jasonc@cag-re.com](mailto:jasonc@cag-re.com)

**cag** | COMMERCIAL  
ASSET GROUP

## Property Details

Available SF:	+/-800 SF
Rental Rate:	\$3.50 SF Modified Gross
Lease Term:	3 to 10 years
Parking:	4 Tandem Parking Spaces Included

## Property Highlights

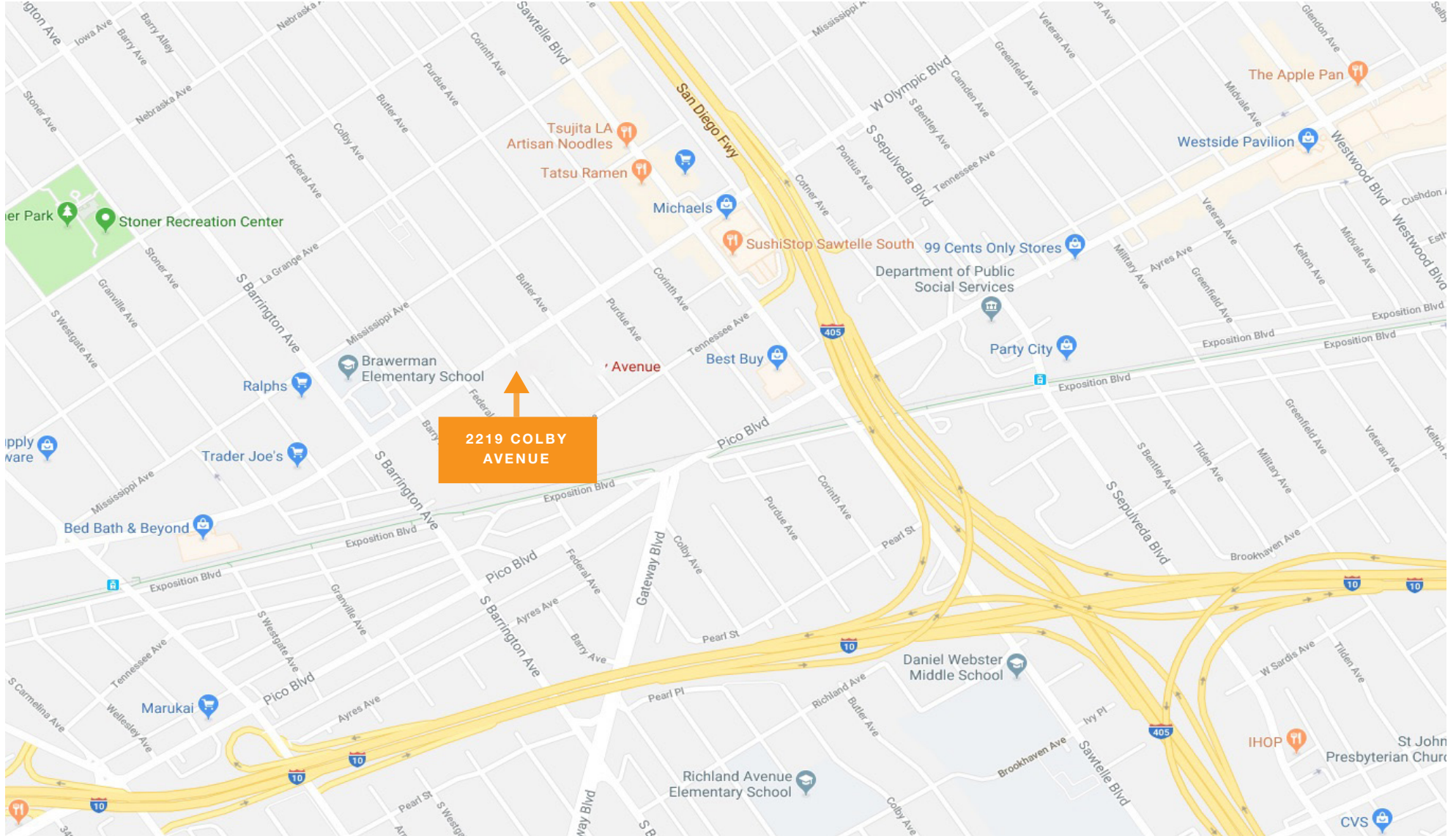
- Rare small office space in a tight rental market
- Under new ownership
- Space going through a complete remodel with high end designer finishes
- Suitable for virtually all office uses
- Excellent layout with 4 offices and 2 restrooms
- Immediate access to the 405 and 10 freeways
- Excellent on-site parking
- Great shops and restaurants within walking distance

**GT** International Motors Ltd.  
Quality BMW Service since 1976

PRIVATE PROPERTY  
NO PARKING  
VIOLATORS WILL BE TOWED AWAY  
AT VEHICLE OWNERS EXPENSE.  
DEC 2008 - A LANE 08-711  
LAPD 070-4000 800-800-0000

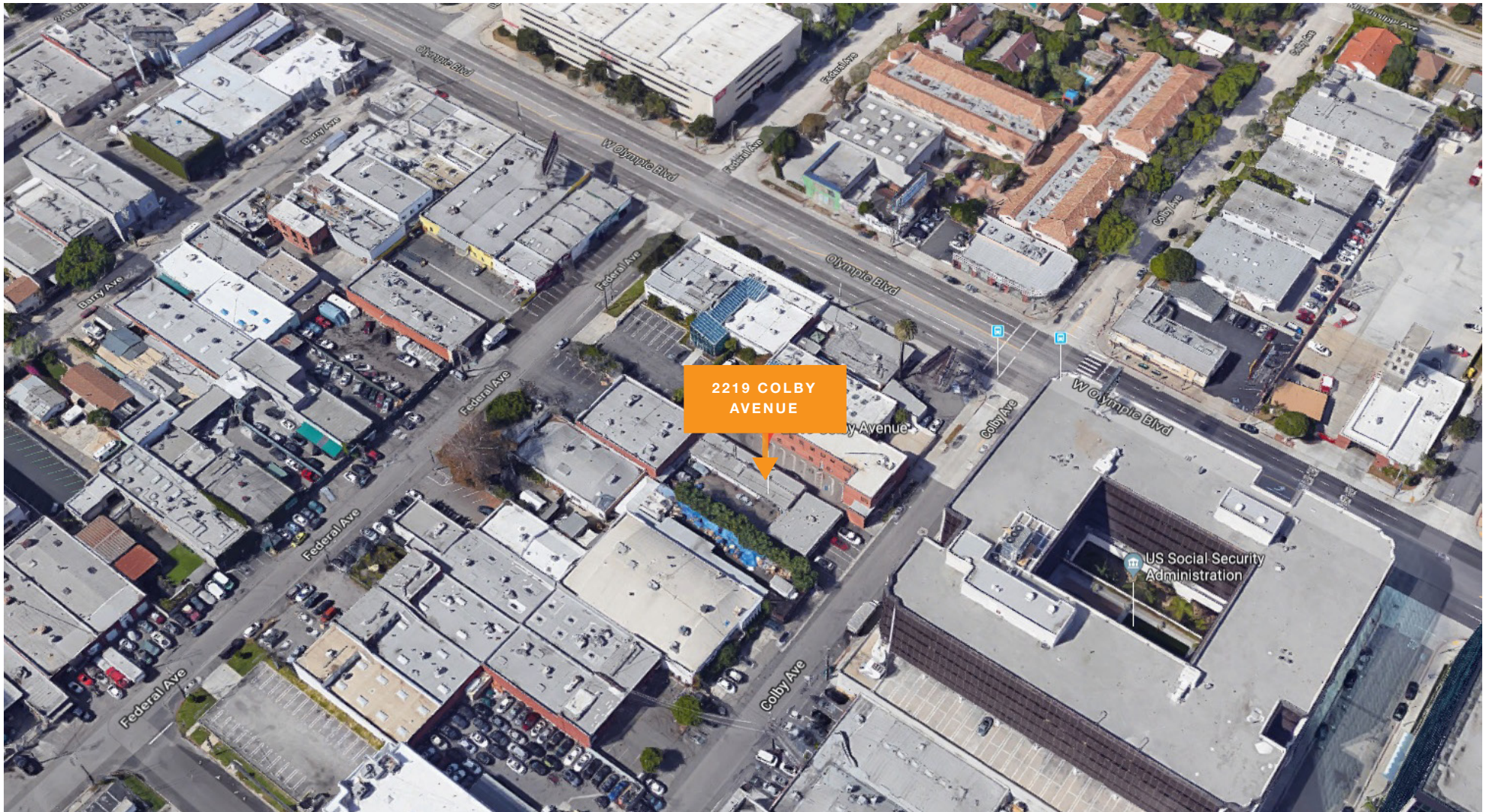
## AERIAL & MAP

2219 COLBY AVENUE, LOS ANGELES, CA 90064



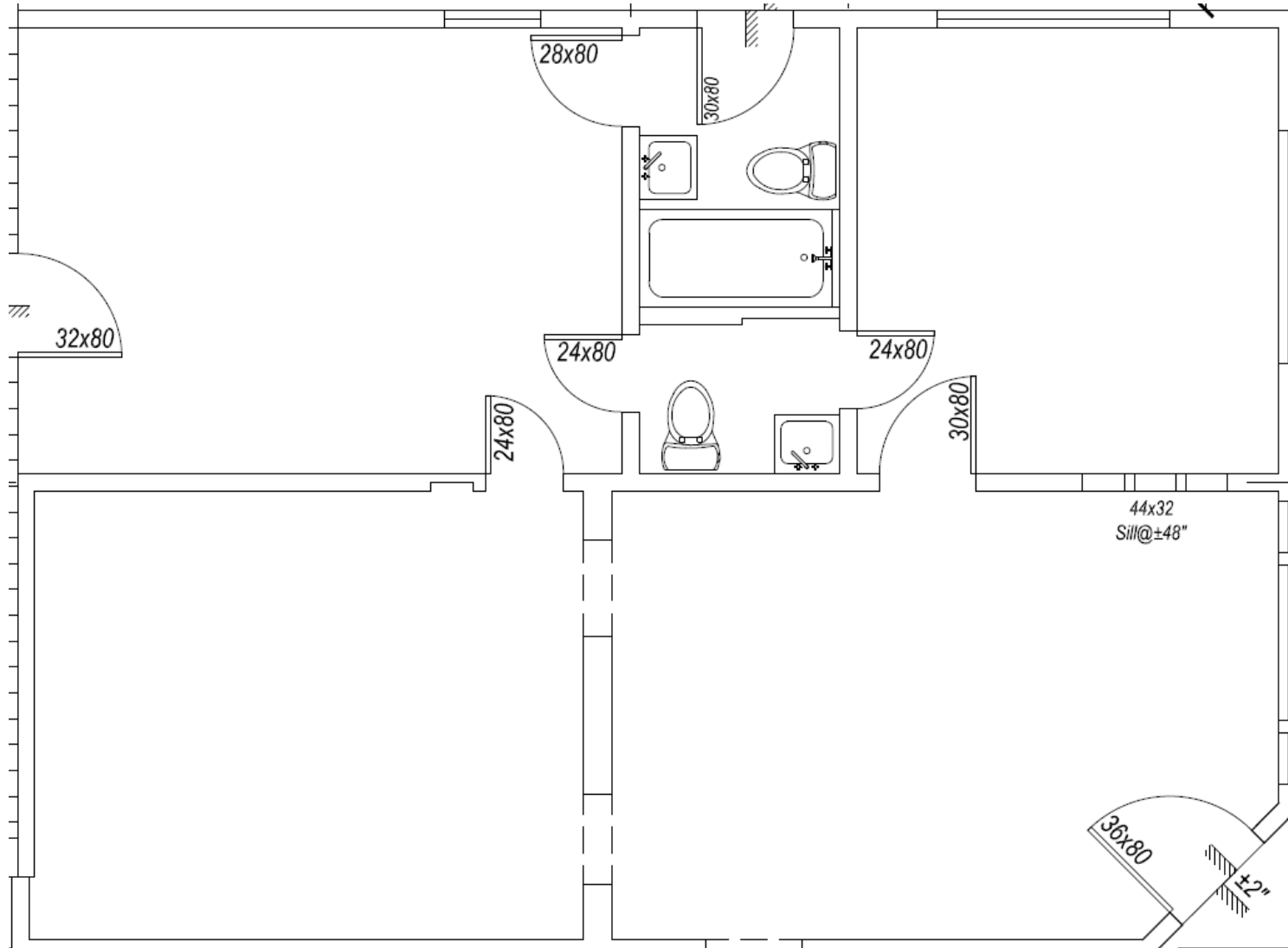
## AERIAL & MAP

2219 COLBY AVENUE, LOS ANGELES, CA 90064



## FLOOR PLAN

2219 COLBY AVENUE, LOS ANGELES, CA 90064





For more information, please call.



Commercial Asset Group, Inc.  
1801 Century Park East, Suite 1550  
Los Angeles, California 90067  
P 310.275.8222 F 310.275.8223  
[www.cag-re.com](http://www.cag-re.com)  
License #01876070

Jason Cole  
Managing Director  
Phone: 310.272.7383  
Email: [jason@cag-re.com](mailto:jason@cag-re.com)  
Lic. 01727670

These materials are based on information and content provided by others, which we believe are accurate. No guarantee, warranty or representation is made by Commercial Asset Group, Inc. or its personnel. All interested parties must independently verify accuracy and completeness. As well, any projections, assumptions, opinion, or estimates are used for example only and do not represent the current or future performance of the identified property. Your tax, financial, legal and toxic substance advisors should conduct a careful investigation of the property and its suitability for your needs, including land use limitations. The property is subject to prior lease, sale, change in price, or withdrawal from the market without notice.