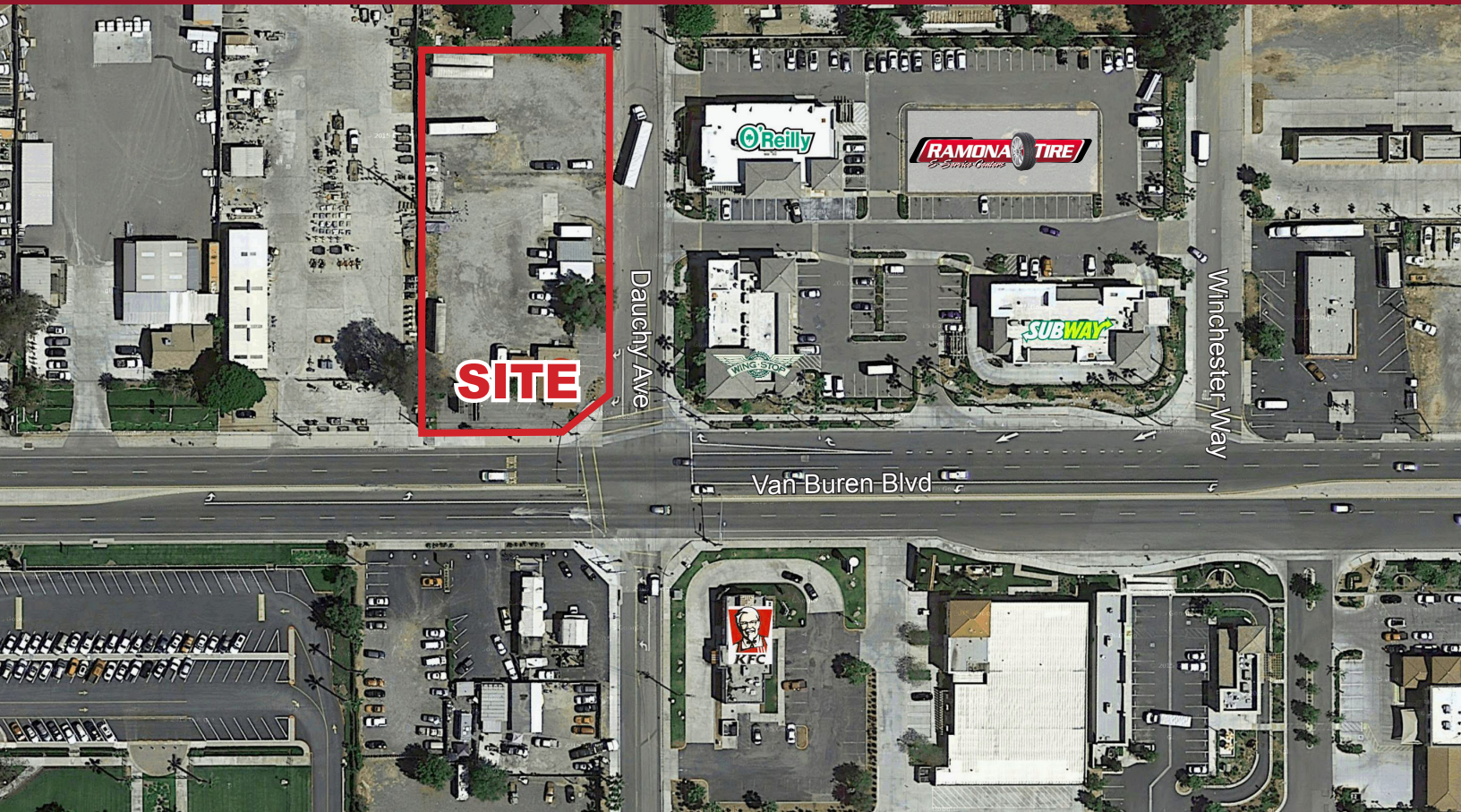


# SIGNALIZED VACANT LAND FOR SALE

18494 Van Buren Blvd. - Riverside, CA



## FEATURES

- Signalized Vacant Land With Billboard
- Successful Retail Corridor
- ±40,510 SF (APN: 280-110-013)
- High Income Neighborhood
- 52,000 CPD At The Intersection Of Van Buren Blvd And Dauchy Ave (According to Regis Online)
- Riverside's Highest Growth Community



# ±52,000

At Van Buren Blvd And Dauchy Ave



CALL TODAY FOR MORE INFORMATION

**LEE & ASSOCIATES**  
COMMERCIAL REAL ESTATE SERVICES

**NICK WIRICK**  
951.276.3636  
nwirick@lee-associates.com  
License ID# 01304661

# SIGNALIZED VACANT LAND FOR SALE

18494 Van Buren Blvd. - Riverside, CA

## 2016 DEMOGRAPHICS

### Estimated Population

1-Mile	2-Mile	3-Mile
8,323	29,869	55,458

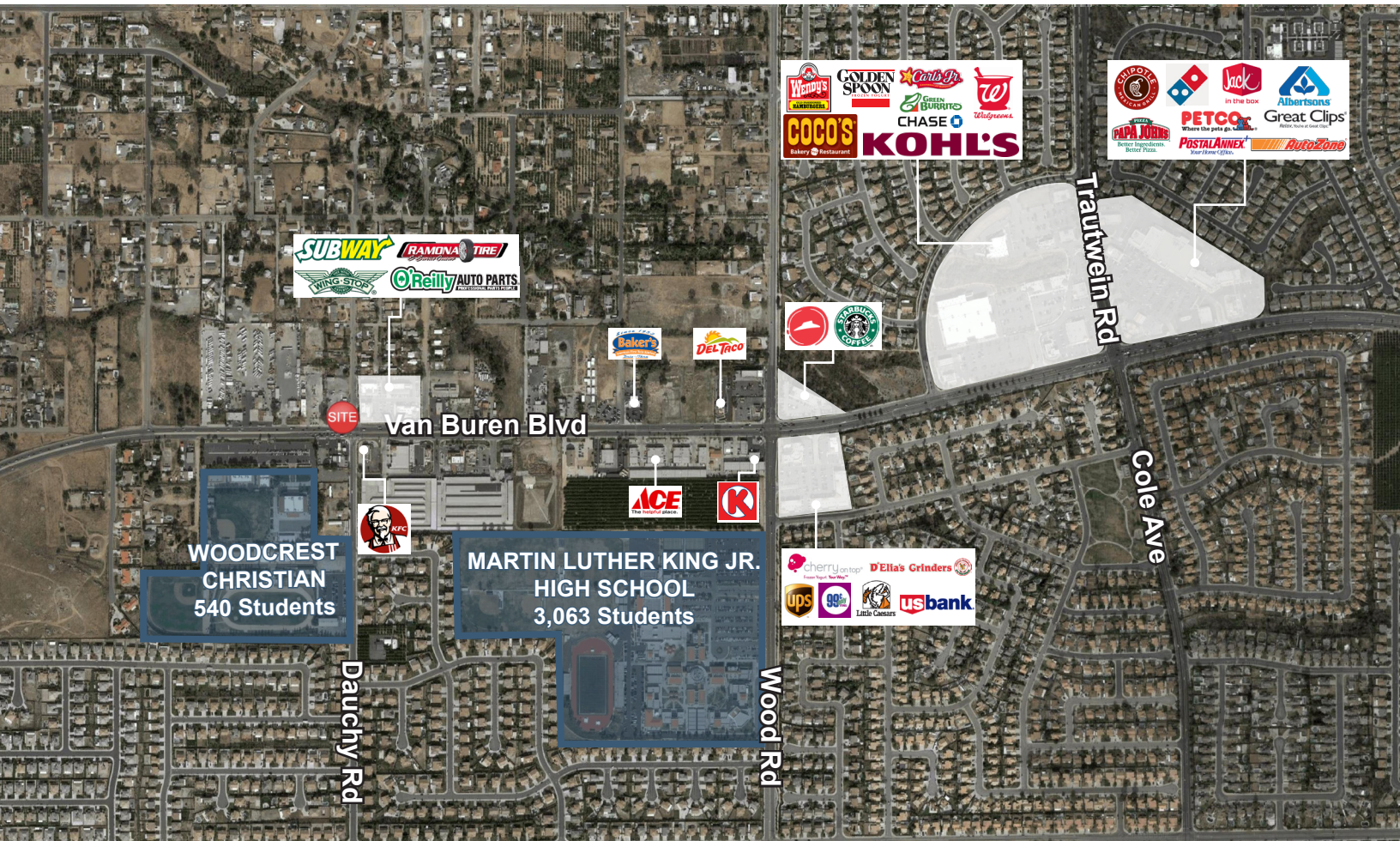
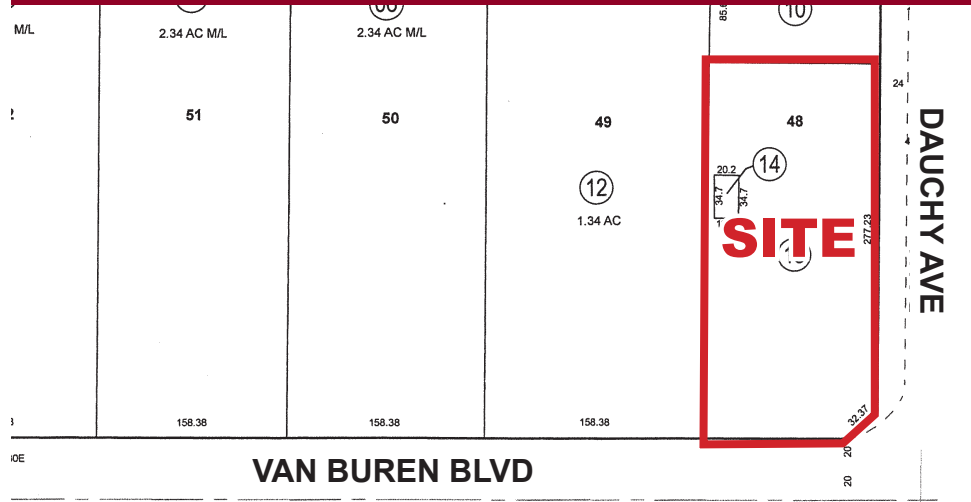
### Average Household Income

1-Mile	2-Mile	3-Mile
\$137,859	\$127,272	\$124,212

### Daytime Demographics

1-Mile	2-Mile	3-Mile
4,224	13,588	26,755

## PARCEL MAP



CALL TODAY FOR MORE INFORMATION

**LEE & ASSOCIATES**  
COMMERCIAL REAL ESTATE SERVICES

**NICK WIRICK**  
951.276.3636  
nwirick@lee-associates.com  
License ID# 01304661